



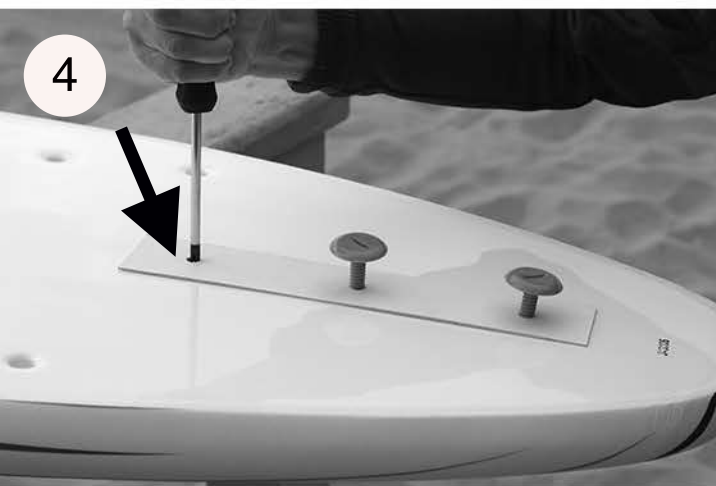
1  
Unscrew and remove all existing screws and fins.



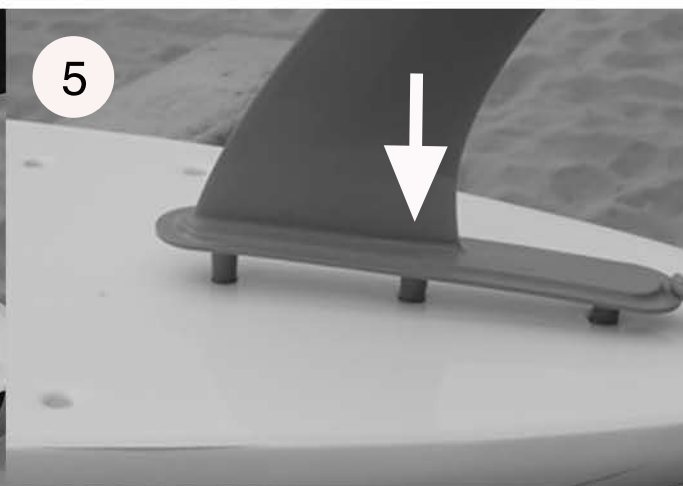
2  
Your board is now ready for installation of Perfect Storm.



3  
Put 2 screws in paper template and insert into rear fin holes.



4  
Use a Phillips screw driver to ream a hole all the way through the board.



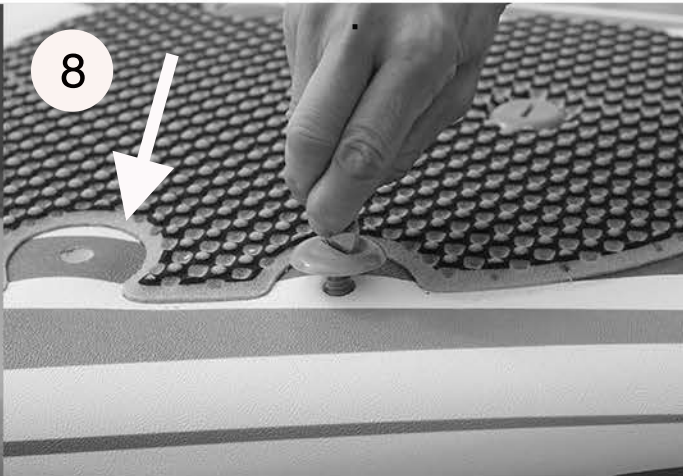
5  
Press fin firmly into bottom of board until flush.



6  
Secure fin with kit screws. Make sure to include leash mount.



7  
Press all 4 plugs into underside of board.



8  
Secure plugs using the last 4 screws. Tighten all 7 screws.



9  
**Go SHRED!**