



# LANDSCAPE

Tools & Supplies for Marble, Granite, Concrete, & Tile

- Horizontal Stone Lifting Clamps
- Scissor Clamp Lifters
- Versa Block Clamp
- Monument Clamp
- Rock Lifter Grapple
- Vacuum Block Lifter
- Vacuum Lifter Handy



# Horizontal Stone Lifting Clamps

For lifting and moving of concrete blocks and natural stone. Long-lasting, high friction replaceable Polyurethane gripping pads protect load surfaces against damage. Suitable for use on cranes or forklift booms. Clamp jaws are gravity controlled. They open automatically on every second lift and close on every second lift.



## Product Code: **AHLC-730**

---

- **Grip range:**  
280 - 730 mm | 11" - 28"
- **Working load limit:**  
1500 kg | 3307 lb



## Product Code: **AHLC-1050**

---

- **Grip range:**  
280 - 1050 mm | 11" - 41"
- **Working load limit:**  
1500 kg | 3307 lb

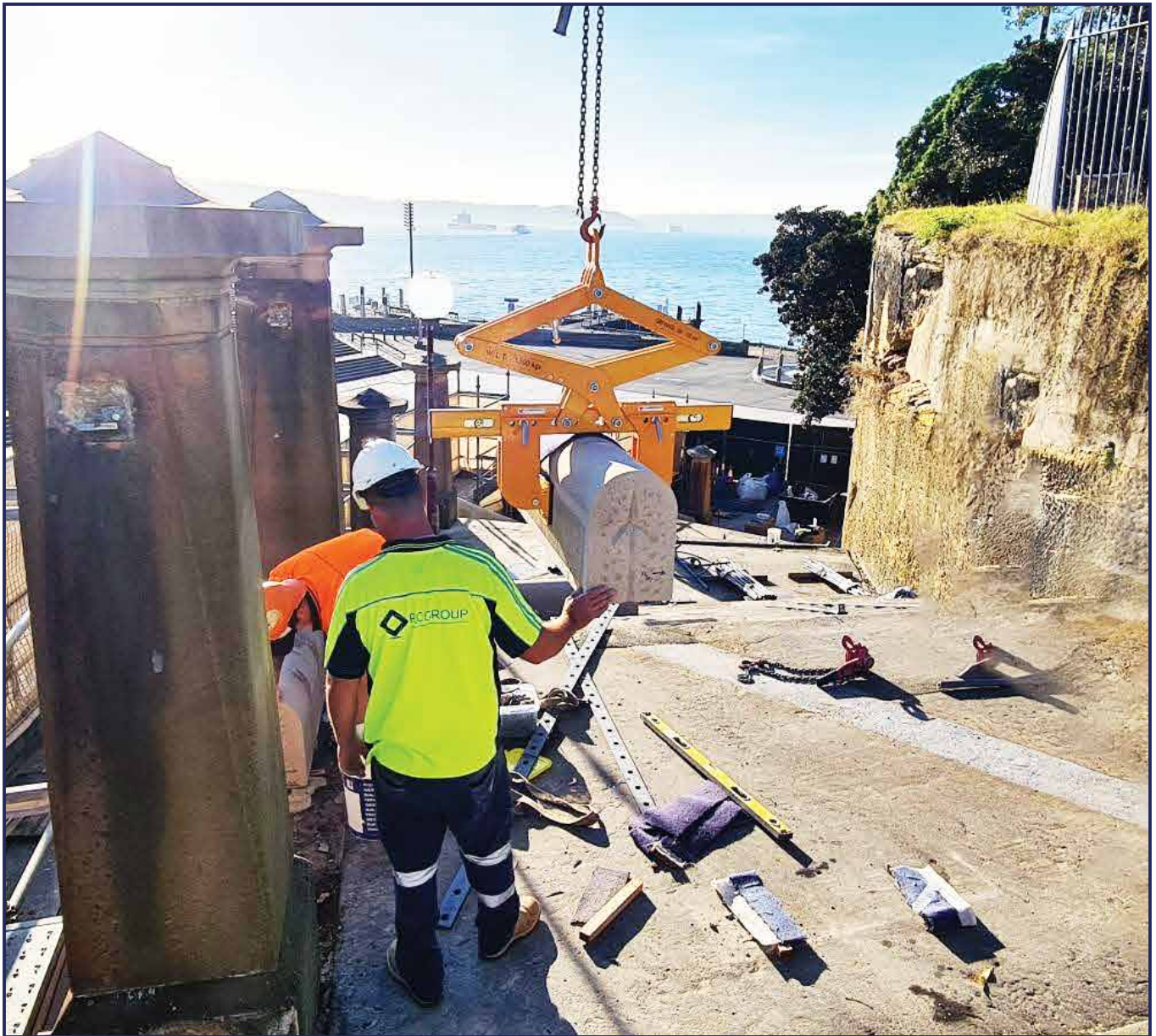


## Product Code: **AHLC-2010-4T**

---

- **Grip range:**  
300 - 2010 mm | 12" - 79"
- **Working load limit:**  
4000 kg | 8818 lb

- Adjustable jaw opening width.
- A large gripping range, making it suitable for a wide range of applications.
- Long-lasting, high friction replaceable Polyurethane gripping pads.
- Lifting eye for attaching to a crane hook.
- Auto locks and unlocks the load.



**Optional extra:** The rotating pad and limit stop can be sold upon request.

**STRENGTHS OF THE ROTATING PAD AND LIMIT STOP:**

- The horizontal stone lifting clamp with rotating pads and limit stop is a special lifting clamp that can optimize the working efficiency. The clamp can be worked well when rotating and lifting the material in horizontal and vertical directions.
- The limit stop provides the exactly distance between the clamp and the material, allowing the material can be moved within the narrow space in the comfortable manner.
- The rotating pads can be changed quickly for rotating the concrete block easily and safely.

# Scissor Clamp Lifters

The Aardwolf Scissor Clamp Lifters are equipped with a rubber contact pad for the safe handling of materials. By means of a gravity controlled locking latch, the clamp automatically grips and releases the materials. Suitable for lifting marble and granite slabs, tombstones, concrete barriers, curbs (kerbs) and median walls.

- Auto locks and unlocks
- Long-lasting, high friction replaceable Polyurethane gripping pads
- Protective rubber-lined bar prevents the material from chipping



Product Code: **ASL200**

- **Grip range:** 50 - 200 mm | 2" - 8"
- **Working load limit:** 1000 kg | 2204 lb



Product Code: **ASL300**

- **Grip range:** 150 - 300 mm | 6" - 12"
- **Working load limit:** 1500 kg | 3307 lb



# Versa Block Clamp

The Versa Block Clamp is made for lifting and moving concrete blocks, rubber tires, drums or other materials. The clamp consists of two sliding pads that can be adjusted to the desired widths and they are locked by a locking latch on each side. The Versa Block Clamp is a multipurpose solution when fitted with different jaws to grab the different material types, whether square or curved shapes. These jaws can be easily changed and reversed to allow for picking up objects from the inside face or inside out.



- Handles heavy loads with different capacities.
- Grips and releases the load automatically.
- The jaw width is simple and easy to adjust.
- The rubber jaws protect loads from being damaged.
- Optional jaws for different material shapes.
- Lifting eye allows for easy hook attachment.

Product Code: **AVBC-600**

- **Grip range:**  
100 - 610 mm | 4" - 24"
- **Working load limit:**  
1200 kg | 2646 lb

# Monument Clamp

Works with any lifting device.

The Aardwolf Monument Clamp/Lifter Automatic is ideal for lifting and setting concrete, stone and marble building fascia. It is useful for moving and setting heavy or awkward retaining wall blocks and slabs. The slim profile allows it to set material in tight places. The clamping jaw and the center of gravity are easily and quickly adjustable by means of the locking pins. The jaws of the lifter are lined with vulcanized rubber to ensure a safe and non-marking grip. The clamps are gravity controlled, which open when rested and close when lifted.



Product Code: **GPM1500A**

- **Grip range:** 20 - 300 mm | 1" - 12"
- **Working load limit:** 1500 kg | 3307 lb

# Rock Lifter Grapple

is an attachment that makes moving and setting large rocks and boulders a snap. Designed for the landscape contractor, stonemason, or anyone else who works regularly with rocks and boulders. The Rock Lifter Grapple is an efficient solution to work faster, better and with less labor.



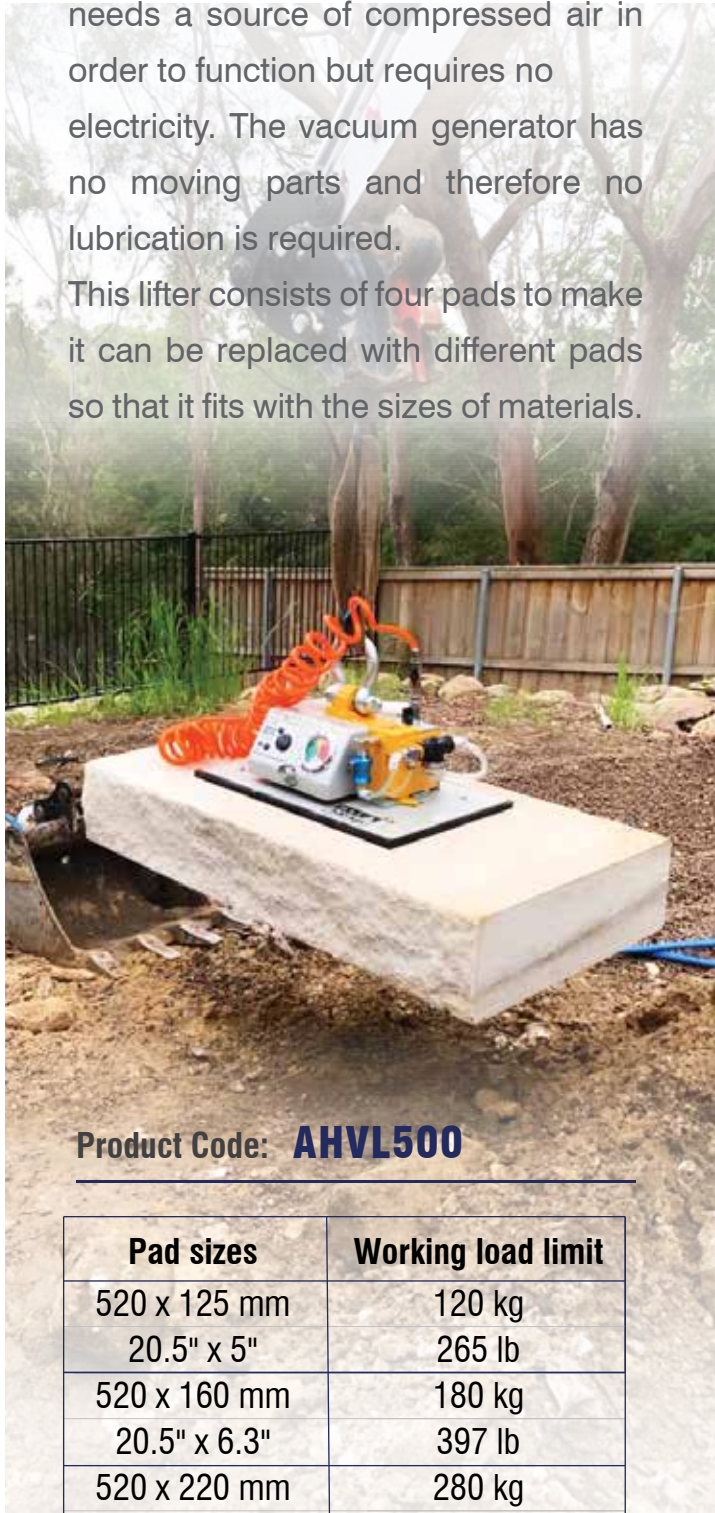
Product Code: **ARL-800**

- **Grip range:** 350 - 800 mm | 14" - 31"
- **Working load limit:** 750 kg | 1653 lb

# Vacuum Lifter Handy

The Vacuum Lifter Handy is powered by a venturi vacuum generator, which needs a source of compressed air in order to function but requires no electricity. The vacuum generator has no moving parts and therefore no lubrication is required.

This lifter consists of four pads to make it can be replaced with different pads so that it fits with the sizes of materials.



Product Code: **AHVL500**

Pad sizes	Working load limit
520 x 125 mm 20.5" x 5"	120 kg 265 lb
520 x 160 mm 20.5" x 6.3"	180 kg 397 lb
520 x 220 mm 20.5" x 8.7"	280 kg 617 lb
520 x 320 mm 20.5" x 12.6"	500 kg 1102 lb

# Vacuum Block Lifter

A powerful battery-operated vacuum lifting device for laying marble, granite slabs, concrete, and other related materials. Robust and compact, this Vacuum Block Lifter can be suspended on all types of lifting equipment by means of load hooks, chains, cables, etc.



Product Code: **AVBL1000**

- **Pad sizes:** 800 x 500 mm | 31.5" x 19.7"
- **Working load limit:** 1000 kg | 2204 lb



**GET IN  
TOUCH**

 +1 469-573-1077 / +972-800-1502

 [support@colossaldiamondtools.com](mailto:support@colossaldiamondtools.com)

 2913 Anode Lane, Dallas, TX, United States, Texas

