

BETA COAXIAL SCOPES

ANILOX ROLL INSPECTION • EASY & AFFORDABLE

Beta Coaxial Scopes in 100x, 200x, and 400x magnifications bring a new level of clarity and resolution to the visual imaging of anilox roll cells, holographic films, coatings and other applications.

Manage your anilox rolls and cleaning schedule more efficiently by clearly seeing the cell and wall condition.

These rugged, handheld devices incorporate coaxial illumination in a compound microscope designed to reveal surface texture not otherwise visible. White LED illumination is projected precisely along the optical axis to facilitate examination of anilox rolls to reveal wear, plugging, and other forms of damage that impact print quality.

Three magnifications of 100x, 200x, and 400x satisfy all requirements. **Anilox inspection is best done with the 400x unit** for rolls used for high quality process work. The rubberized grip insures a steady view.

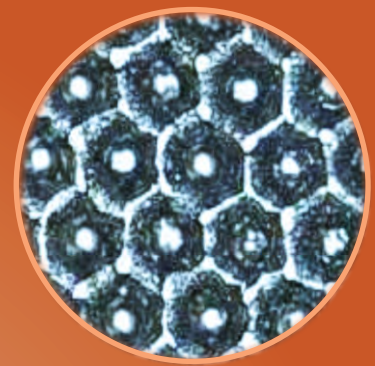
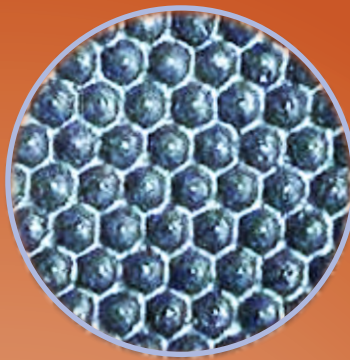
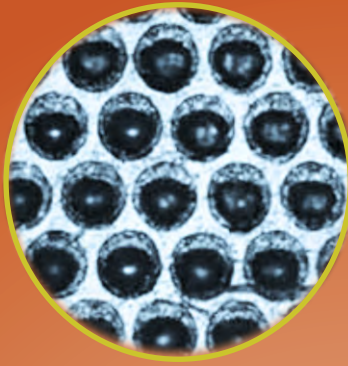
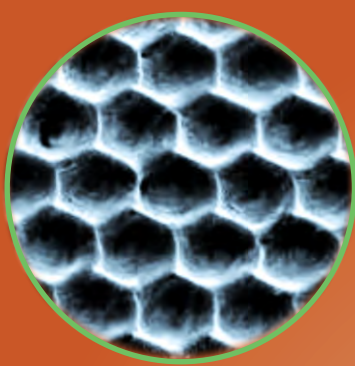


100X is useful for coarse engravings and general inspection of metallic surfaces.

200X shows the uniformity of clear coatings and primers as well as details of hot stamped films and holographic foils.

400X is the most widely used magnification for critical examination of fine anilox cell structures, determination of cleaning efficiency, and laser-ablation metal plates.

Contact Beta to Schedule a Free 10-Day Trial



COAXIAL ILLUMINATION

Viewing Objects In A Completely Different Way

Beta Coaxial Scopes with coaxial illumination strongly emphasize surface texture and differences in gloss while differences in color and density are minimized. This unique property makes Beta Coaxial Scopes the perfect instrument to analyze anilox roll cell structure, surface finish on metal rollers, varnish on printed work, and many other print related materials.

The objective lens of the microscope serves two functions;

- Creates a highly magnified image of the sample which is enlarged by the eyepiece
- Focuses the coaxial illumination onto the surface of the sample

The light is focused perpendicular to the sample surface. What you see through the eyepiece is the difference in the directly reflected light due to differences in gloss or angle of the sample. This is different than other magnifiers and microscopes that place the light source off to the side, avoiding direct reflections. Using coaxial illumination, the engraved structures of the anilox cells are rendered much more clearly.

- Inspect Anilox Rolls in Flexo Printing, Varnish and Glue Application, etc.
- Suitable for use With all Laser Engraved Ceramic and Metal Rolls, and Mechanically Engraved Rolls
- Use with Conventional Hex Engravings and all the Latest Geometries

**Fields of View: 400X: 0.017 inch (0.45 mm) | 200X: 0.035 inch (.90 mm)
100X: 0.070 inch (1.80 mm)**

Dimensions: 8.85 x 1.25 x 2.55 (inches) | 22.5 x 3.2 x 6.5 (cm)

Weight: 1.1 pounds (0.5 kg.)

Illumination: Coaxial

Light Source: White LED (100,000 + hour life)

Control: ON/OFF Switch, Focus Control

Power Source: 3 "AAA" Batteries (included)

Battery Life: 7 hours continuous

Warranty: 1 year

