

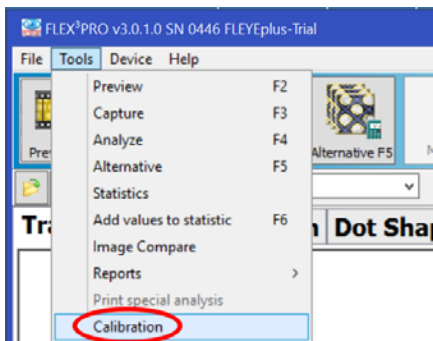
Betaflex PRO Periodic Calibration Check

Betaflex PRO Flexo Analyzers are delivered with a Certificate of Calibration demonstrating that the instrument is operating correctly. A Calibration Check Plaque is included with the Betaflex PRO with the date of manufacture of the instrument. The user's proof of proper operation of the Betaflex PRO consists of two parts;

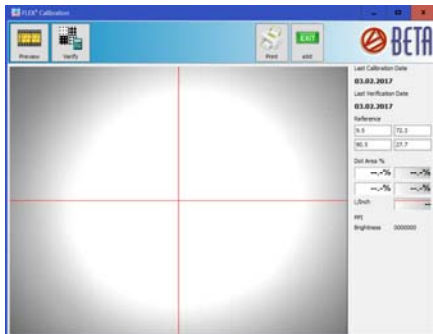
- A Calibration Report with a PASS mark
- A Calibration Check Plaque with a Manufacturing Date 24 months or less from the date of the Calibration Report

The Calibration procedure is quick and easy to perform;

- Select the Calibration function for the Tools menu



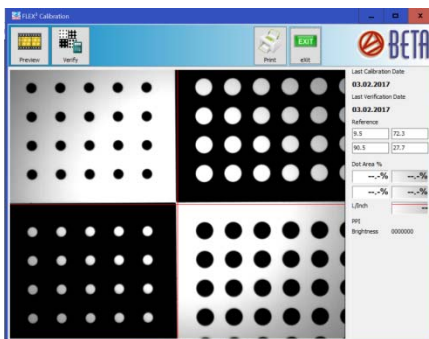
A secondary screen will open with a red crosshair;



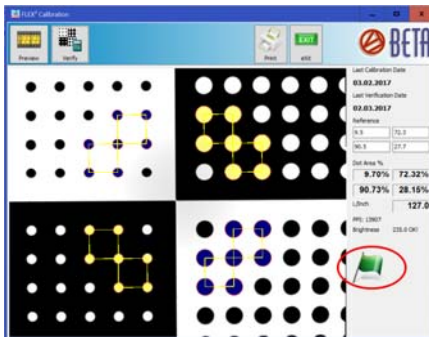
Place the Calibration check plaque on the stage as shown;



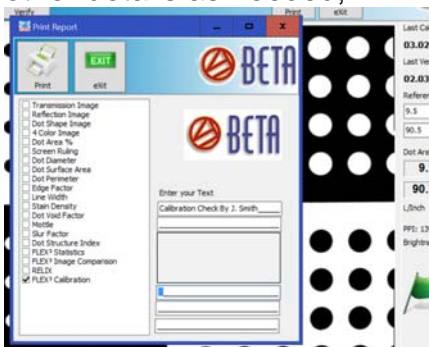
Align the Target with the crosshairs;



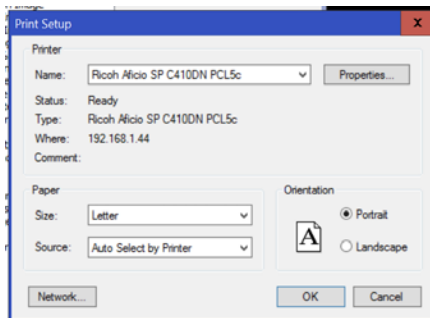
Click on Verify to capture and analyze the image. The result is shown immediately on screen. A successful calibration check is indicated by a green flag as shown here;



Click on the Print icon to open the Print Report dialog box. Add any operator information or other details as needed;



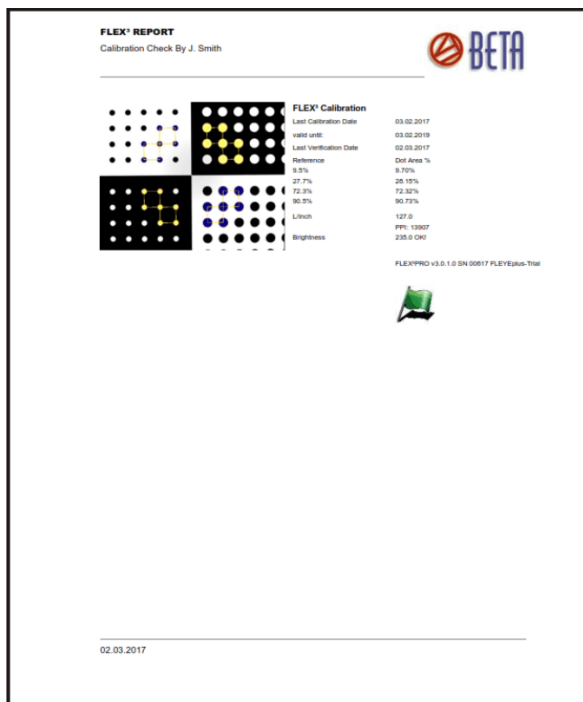
Choose a physical printer to produce a paper report or a PDF driver to create an electronic document to save or distribute.



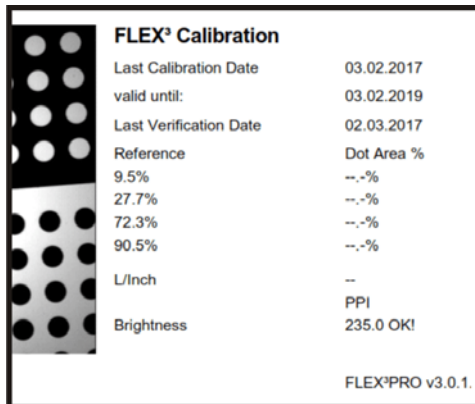
The report will contain the Calibration image, the user notes, the system date stamp and the Calibration result;

- green Pass flag
- yellow Warning triangle
- red Fail circle and bar

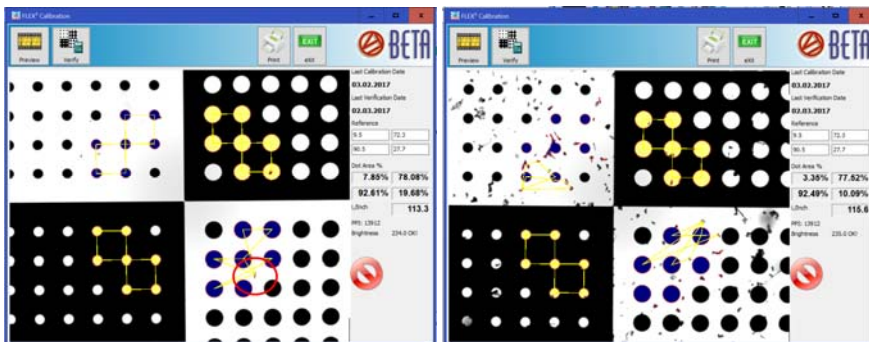
. With the result shown here, the Betaflex PRO system has been proven to be in good operating order.



If the target is not aligned with the cross hairs, no result is obtained.



If there is dust or dirt on the target, the software may fail to properly recognize the calibration halftones. The Calibration test result is NOT VALID unless the yellow squares are properly formed. Clean the target and run the Calibration Verify function again.



The Calibration Result Summary Icon is computed from the four measured halftone patches, the measured screen ruling, and the measured Brightness. Note that the Betaflex PRO Calibration Check procedure DOES NOT change the behavior of the instrument. Samples measured before the calibration check procedure will show the same results after the procedure.

This is different than what happens when you send a densitometer out for factory calibration. Samples measured before the calibration may read differently after the densitometer is calibrated.

If your Betaflex PRO does not produce a PASSING result even after cleaning the target and checking all other typical causes, contact Beta Industries for help. If your device does need to be sent in for repairs or adjustments to achieve a proper calibration result, then there may be a difference in the measured results.

The Calibration Check plaque is valid for 24 months from the date on the identification tag. In order to maintain a valid Certificate of Calibration, the plaque must be replaced every two years when the Betaflex PRO is sent in for Calibration and Re-Certification.

Contact us to obtain an RMA to start the calibration process. We will order a calibration check plaque from the factory for your serial numbered Betaflex PRO. The calibration process takes about two working days once the plaque is delivered and your Betaflex PRO arrives at our office. Your instrument is cleaned, adjusted, minor repairs are made, and brought into calibration. The calibration data is written to the USB memory stick that comes

with every Betaflex PRO. We can email the updated FLEX3PRO.INI file to you with the updated calibration information if the USB stick is not available.

If additional repairs are needed to restore proper operation and accuracy we will notify you. If you have a Betaflex PRO XXL Long Arm system or the Betaflex PRO Sleeve system, only the measuring head needs to be sent to us.

If you need continuous operation of the Betaflex PRO in your workflow we offer a Service Loaner. Let us know if you will need the Service Loaner and we will schedule the calibration service around the availability of the unit.

Contact us for pricing for standard calibration service, which includes a new Calibration Check Plaque, routine cleaning and adjustment, and a Certificate of Calibration.

Contact us for pricing for a Service Loaner for the duration of the calibration process and transit time.

Inbound shipments to us must be Freight Prepaid and Insured.

Please contact us if you have any questions about the Recalibration and Certification process, or the Betaflex PRO system in general.

24-May-2018