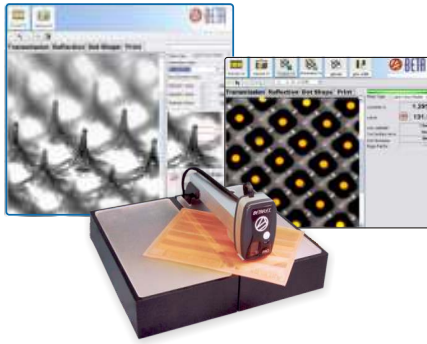


Betaflex Pro

OPTIONS & ACCESSORIES



BETAFLEX PRO FLEXPLO PLATE & IMAGE ANALYZER

Operates At The Highest Possible Resolution for HD Flexo

for the most accurate measurement in **3D DOT STRUCTURE MODE** or **2D MODE** as well as for stochastic screening.

Other Features: **COLOR SEPARATION IMAGING (Print Mode), IMAGE COMPARISON, BAR CODE ANALYSIS.** Measure Dot Area, Screen Ruling, Edge Factor and more. Data and images are easily captured and printed with the integral report generator and statistical analyzer. **Also measures Offset & Letterpress plates, masks, & films.**

FlexiGage Digital Micrometers



Measure plate gauge, relief of thermal, aqueous, solvent, and direct ablation plates with Flexi-Gage Digital Micrometers

to add the data directly to FlexoEyePlus Software. Use your plate gauge table with FlexiGage uses your plate table while the Betaflex Pro sensor can be mounted on the Sleeve Adaptor to measure sleeves in 2D and 3D mode with, **FlexiGage Standard** for sleeves from 80" X 16.7" (2000 mm X 424.18 mm)

FlexoEyePlus Software



Optional software data collector/report generator guides the operator to collect just the data needed for high volume production with no unnecessary steps or obstacles for high production.

Convenient PASS/FAIL icons evaluate minimum dot and midtone dot while plotting the day's production on a convenient graph. Data is also input from the new **FLEXIGAGE DIGITAL MICROMETERS**, see above

XXL Long Arm Adaptor



Mounts Betaflex Pro sensor head & FlexiGage Micrometer 30 inches (920 mm) into the plate. Mask, plate and print halftone analysis as well as plate thickness and relief measurements with optional FlexiGage Micrometer.

***Available as the BetaFlex XXL Long Arm System which includes Betaflex Pro Sensor or sold separately without sensor.**

Betaflex Pro Sleeve Adaptor



Dual transmission illuminators produce sharp, high-contrast images for accurate halftone dot analysis for the Betaflex Pro Measuring Head in both 2D & 3D modes.

Two Available Options: With Betaflex Pro Sensor Head or w/o to attach your existing Sensor head directly.

Format: Cut off: 12" to 49" (300 mm - 1250 mm)

Diameter: 3.75" to 15.7" (95.5 mm - 398 mm)

Width: Maximum 80" (2000 mm)

***Available as the BetaFlex Pro Sleeve Adaptor System which includes Betaflex Pro Sensor or sold separately without sensor.**

Roll Mount



Documents plate wear and damage while the plate is still on press.

The Betaflex Pro sensor attaches to the Roll Mount, stabilizing the sensor on a stationary plate cylinder for 3D mode measurements. Web print samples can also be imaged on a stationary web over a turning bar or flat area on the press.