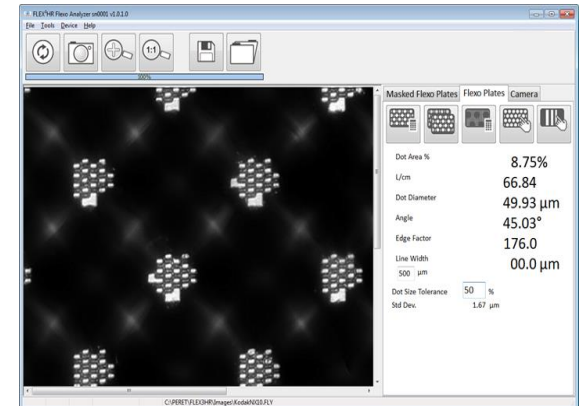
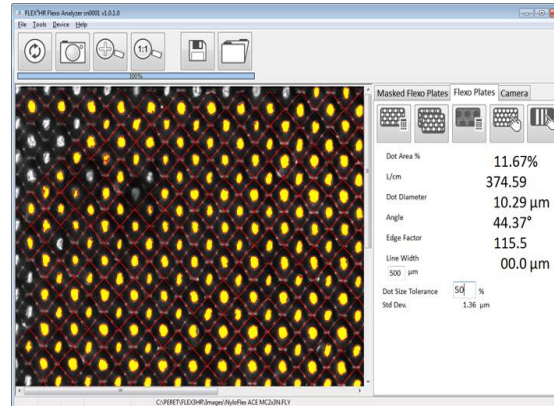
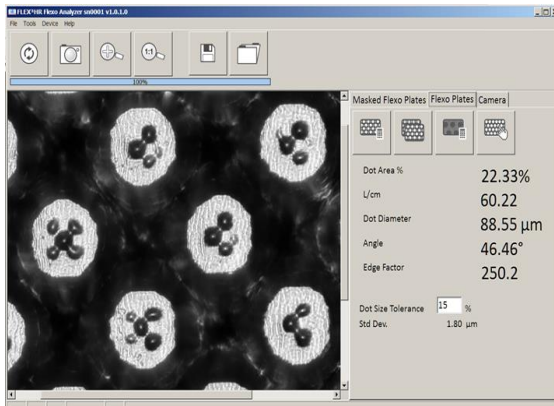
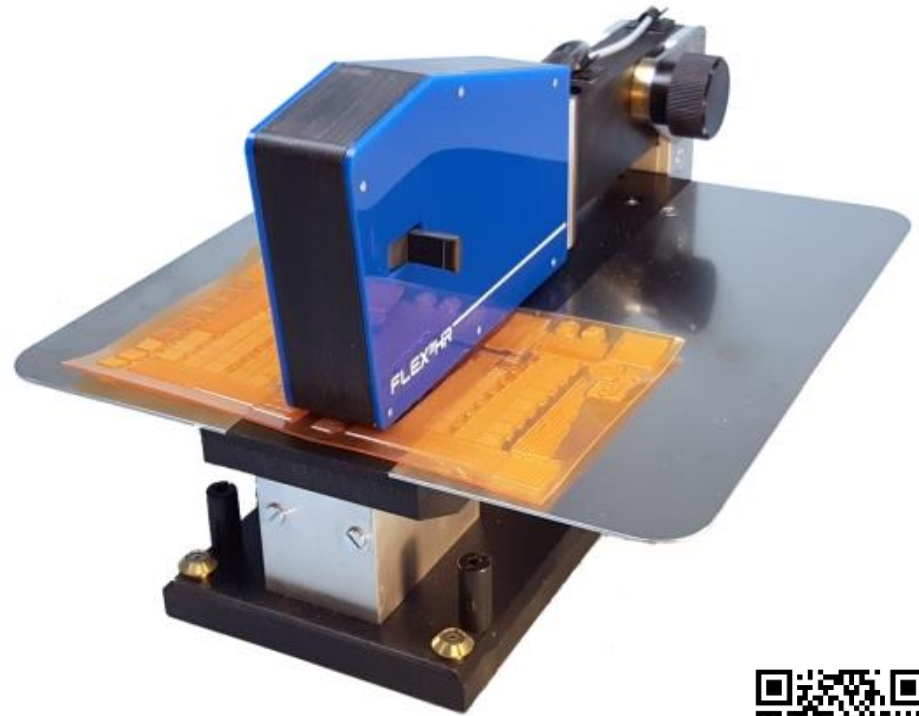
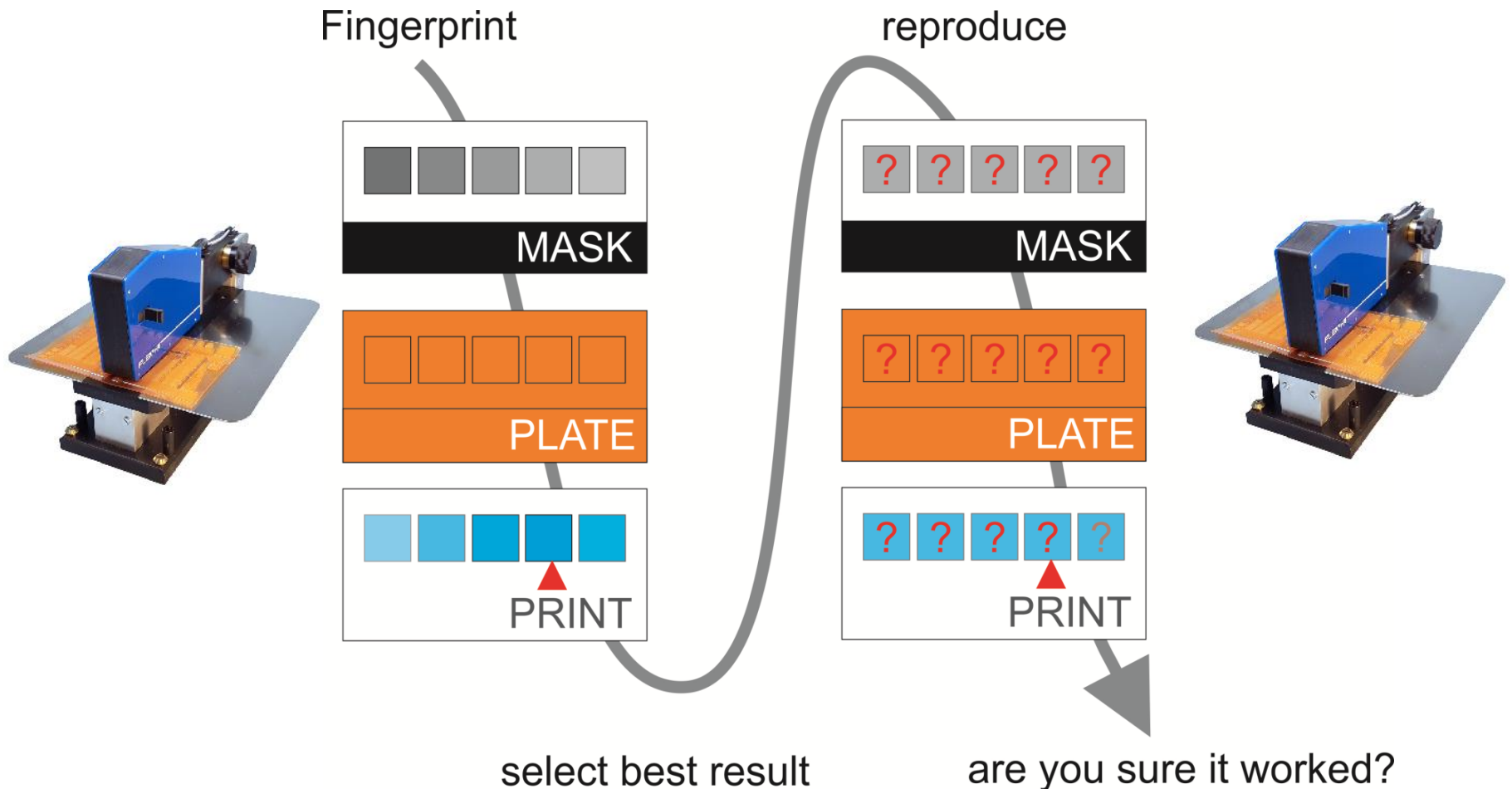


BetaFlex HR

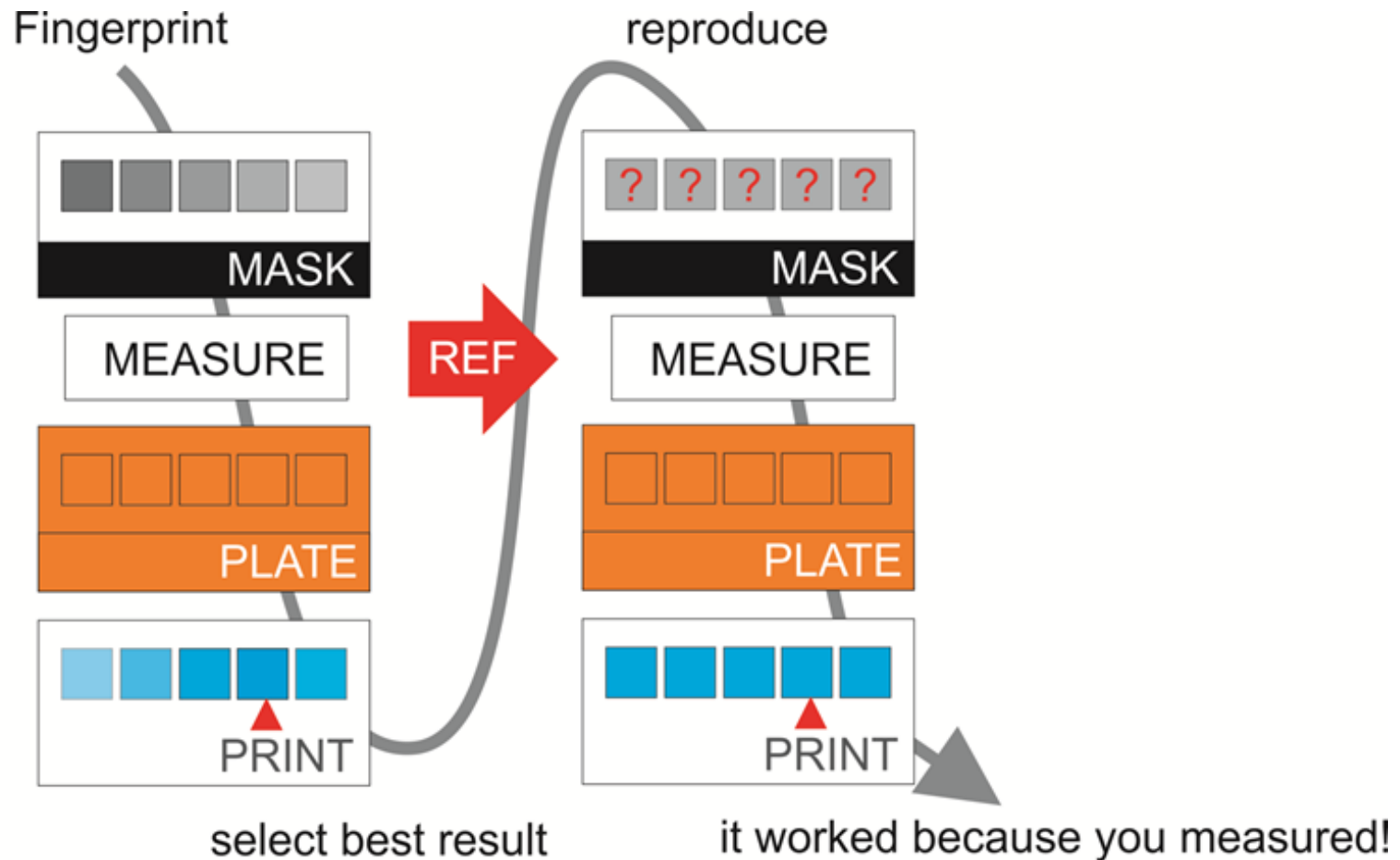
High Resolution Measurements & Analysis of Plate Solid & Micro-Structures



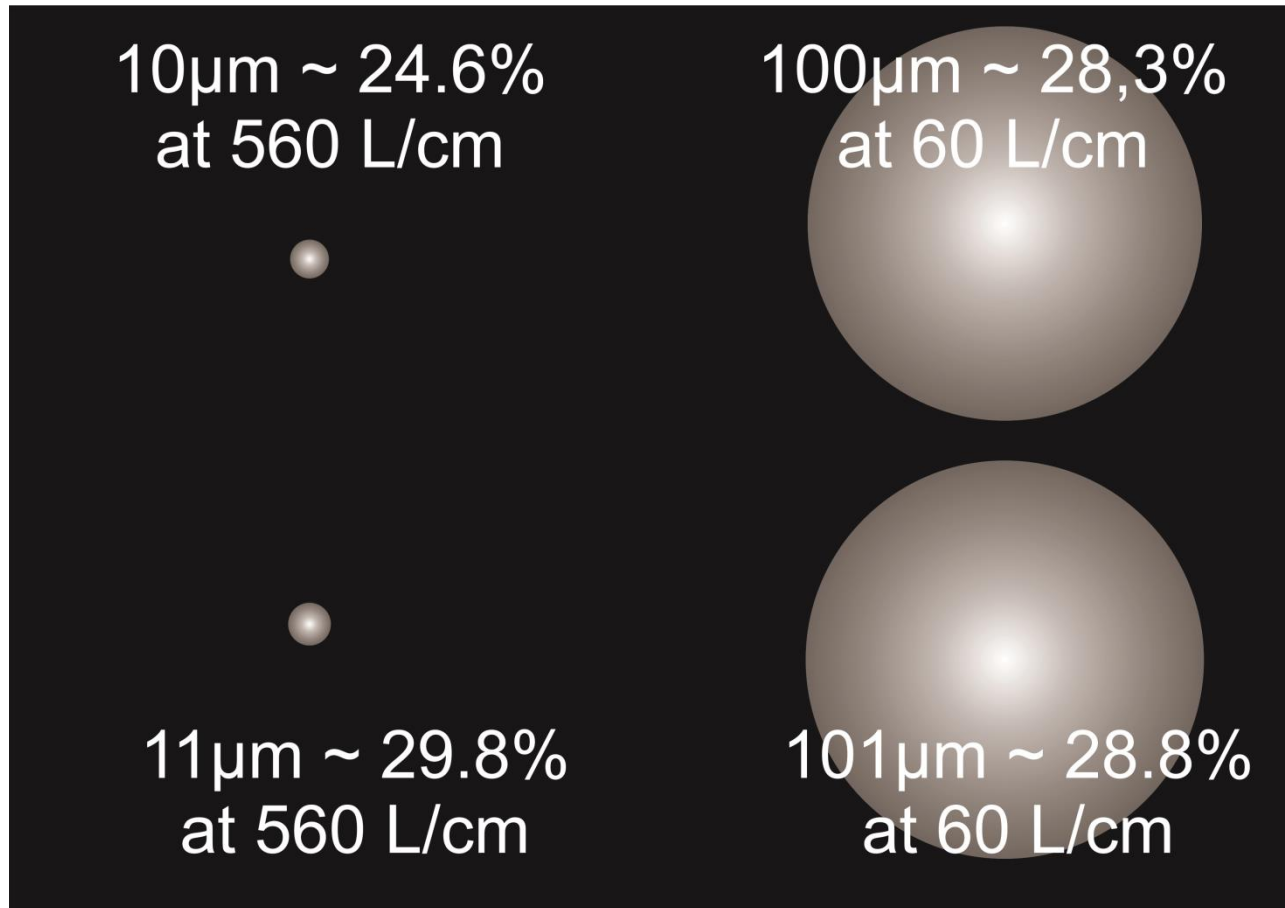
Micro-Structures are Applied to Solids to Improve Ink Transfer and Solid Quality



Consistent Reproduction of Solids by Controlling the Imaging of the Micro Structures on Engraved LAMS

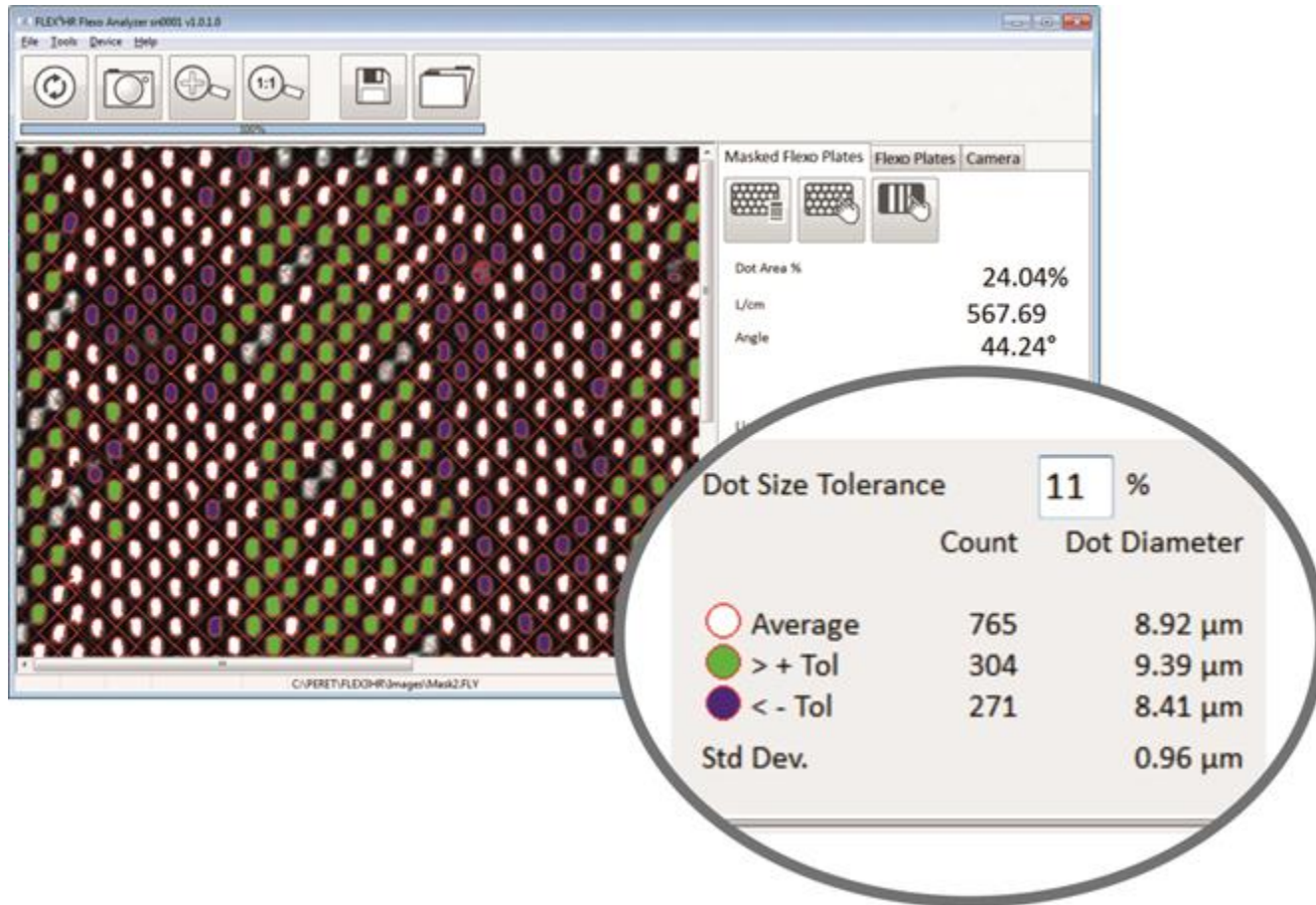


The Impact of 1 micron: The physical variations in size of Cells are directly linked to its overall size

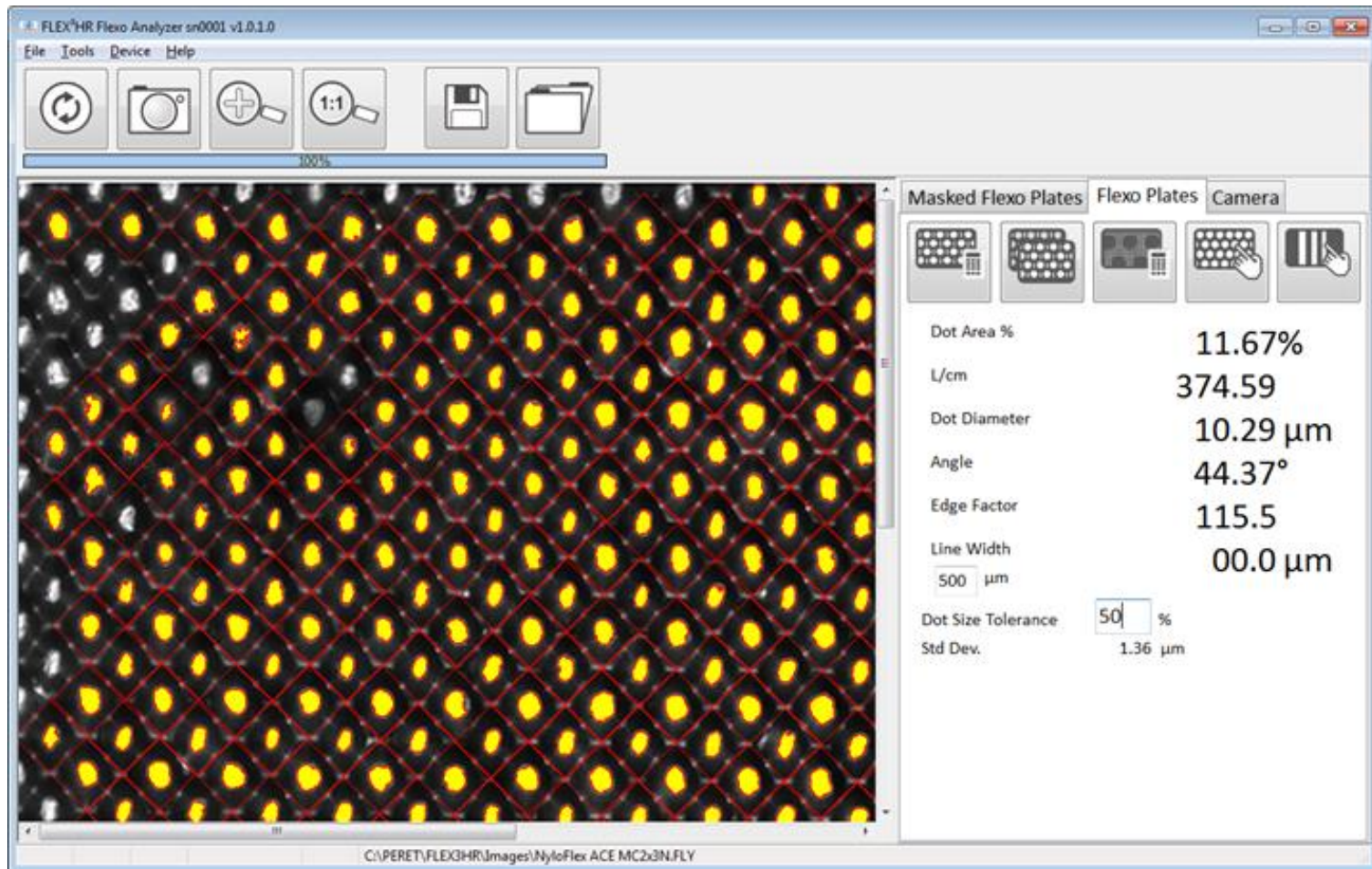


The Impact of 1 Micron

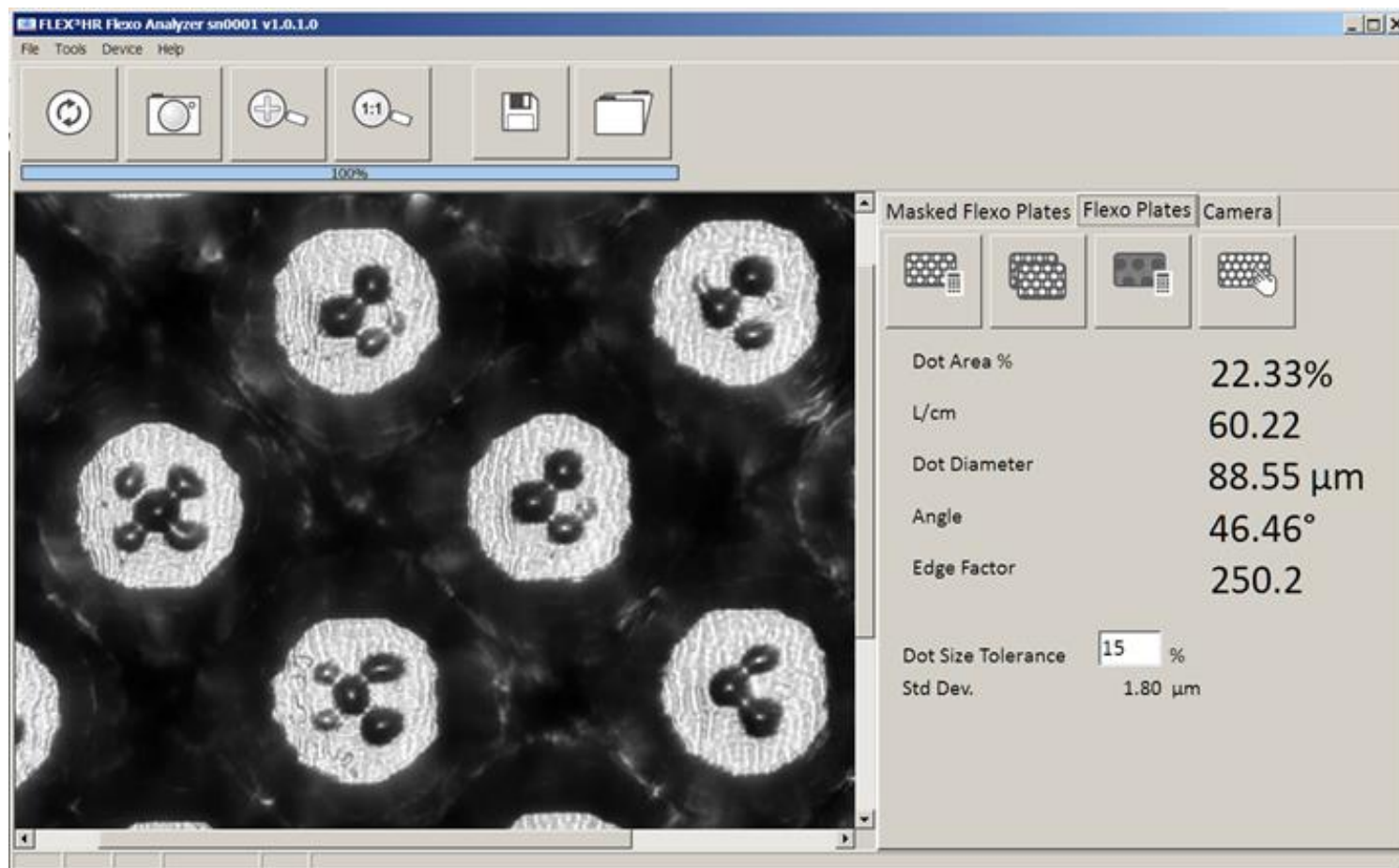
The Solid shows deviations in Cell Size of approximately 5% inside a single patch



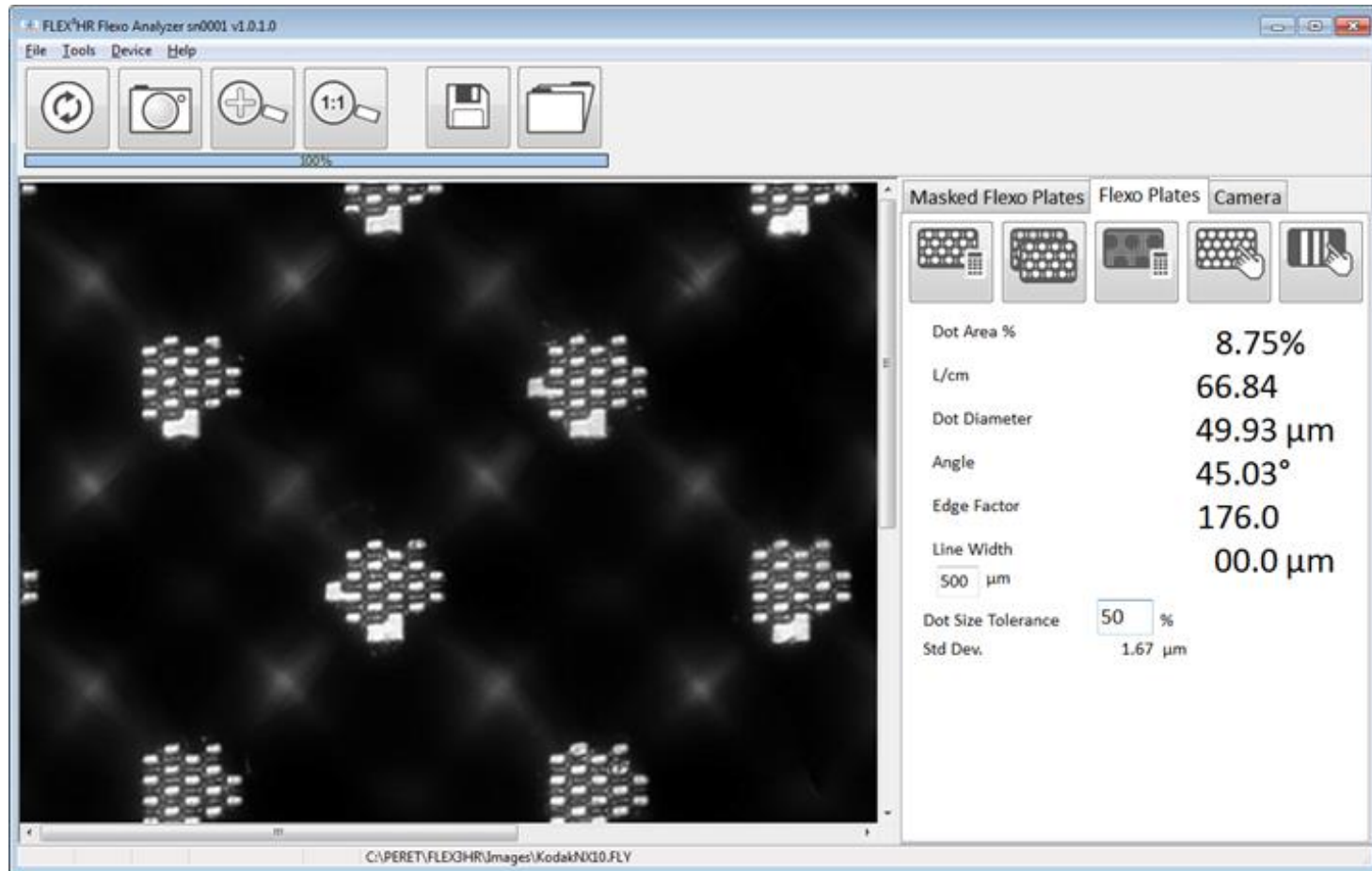
High Cell Rulings require High Resolution Images



The Evaluation of Complex Dot Shapes Requires High Resolution Images



The Evaluation of Complex Dot Shapes Requires High Resolution Images



BETAFLEX HR DOES NOT REPLACE BETAFLEX PRO

BECAUSE THE BETAFLEX PRO OFFERS:



- 3D Image Analysis
- Elastomeric Plate Analysis
- Print Analysis
- Production Control Statistics
- FlexoEyePlus Reporting
- Large Format Version XXL
- Sleeve Adaptor
- Screen rulings below 35 lpi

Weights & Dimensions

Shipping

18 x 14 x 12 inches

45.72 x 35.56 x 30.48 cm.

20 pounds / 9.07 kg.

Dimensional Weight

22 pounds / 9.97 kg.

Unpacked

15 x 8.25 x 6.25 inches

38.1 x 20.95 x 15.87 cm.

15.10 pounds / 6.84 kg.



**707 Commercial Avenue
Carlstadt, NJ 07072 USA**

Ph: 800-272-7336 / 201-939-2400

Fax: 201-939-7656

- **Sales:** stuarts@betascreen.com

Stuart Serchuk: Director, Sales / Marketing

- **Technical Contact:** larry@betascreen.com

Larry Goldberg: Technical Director

www.betascreen.net