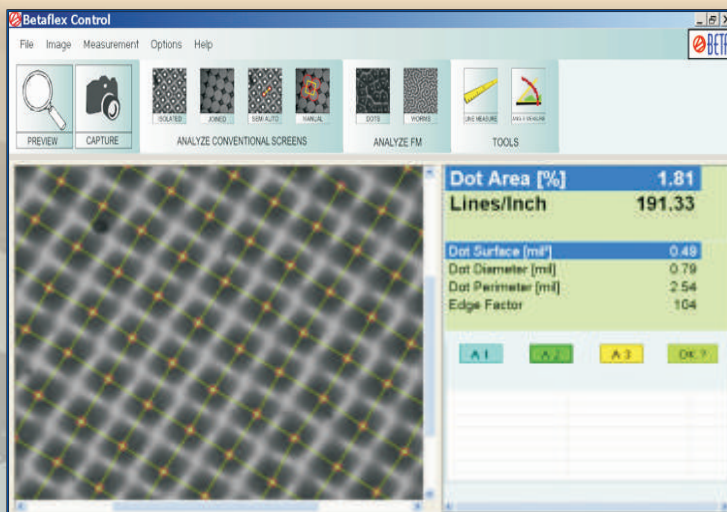


# B E T A F L E X

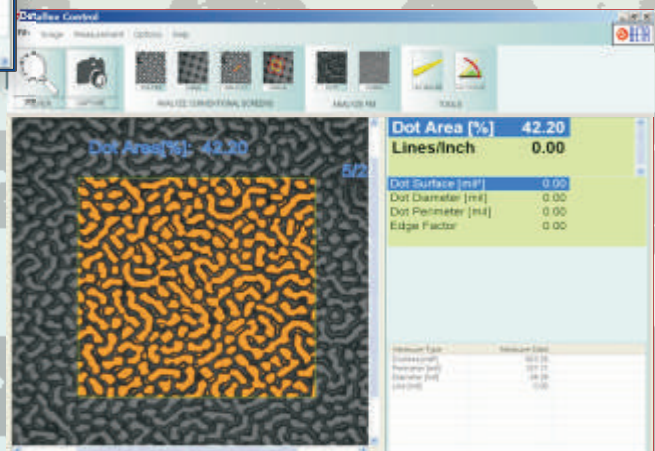
## CONTROL



- **Capture**  
Halftones on Flexo Plates,  
Masks & Film
- **Analyze**  
Dot Area, Bar Code Width  
Screen Ruling, Screen Angle
- **Correct & Control**  
Halftones & more, for better,  
more Profitable Printing



Measure AM, FM  
(Stochastic)  
& Hybrid Screening,  
Portably on  
Plates of Any Size



**Hand Held Flexo  
Plate, Mask,  
& Film Analyzer  
in One Easy Device**

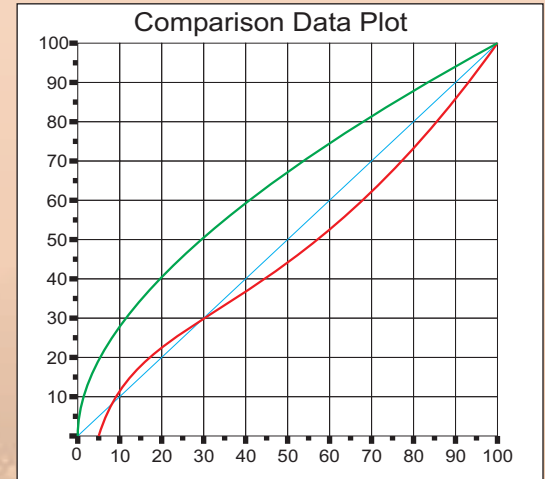
# Betaflex Control

Measure & Control AM/FM  
Stochastic, ISO Certification,  
Device Calibration with database

DotPercentArea [%]	Lines/Inch	Dot Area [µm²]	Dot Diameter [µm]	Dot Perimeter [µm]	EdgeFactor
21.48	125.03	13.74	4.18	13.59	107
21.74	129.03	13.90	4.21	13.65	107
21.53	125.03	13.77	4.19	13.58	107

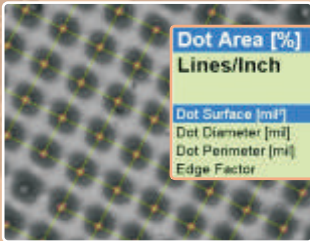
## Data Capture & Statistics

Datatype	Average	STD
Avg.DotPercentArea	21.58	0.10
Avg.DotLinesPerInch	125.03	0.00
Avg.Dot Area	13.80	0.06
Avg.Dot Diameter	4.19	0.01
Avg.Dot Perimeter	13.60	0.03
Avg.Dot EdgeFactor	107.00	0.00

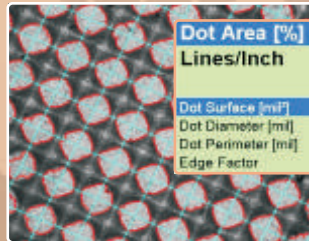


## Tone Reproduction Curve

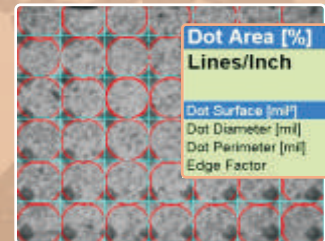
## Capture, Analyze, Correct



## Highlights



## Midtones



## Shadows

### Functions

Dot Area%, Dot Diameter, Screen Ruling, Line Width, (display inch or mm), Dot Diameter, Angle, Digital zoom 4x, Bar Code width

### Materials

Flexo Plates  
Masked Materials  
Film

### Screen Patterns

AM  
FM (Stochastic)  
Hybrid

### System Requirements

Windows 7, 10 (32 & 64 Bit)  
Processor min. 1GHz, 1GB RAM  
2 USB2 ports, CD Drive,  
Min. screen resolution 1024 x 768

### Parts Included

Plate reader with USB cable,  
Software, Dongle, ISO Calibration  
target, Lightbox with 12 volt  
power supply

### Interface/Power

USB powered,  
Lightbox; external  
12 volt power  
supply

### Special Feature

Auto calibration  
with ISO Target

### Specifications

Sensor: 1.3 Megapixel  
Analysis Area: 3mm<sup>2</sup>  
Screen Rulings: 23-85L/cm  
58-216 lpi, Lightbox with external  
power supply, ISO Calibration target



Measure a Variety of  
Different Plate Types



Portable Carrying Case  
Includes All Parts



Hand Held for Plates  
of Any Size

 **BETA INDUSTRIES**  
The Quality Control Company

707 Commercial Ave., Carlstadt, NJ 07072, USA  
Tel: 800-272-7336, 201-939-2400, [www.betascreen.net](http://www.betascreen.net), [sales@betascreen.net](mailto:sales@betascreen.net)