



# RELAX, DREAM, CREATE.

*Get to know us better.  
After all we've been around for over 25 years.*



**CORPORATE OVERVIEW**



*We are Kimo Home, the leading importer of premium sanitary ware and tiles in Ghana, with 25 years of established partnership with world renowned manufacturers of quality brands. We are passionate about the seemingly little things which make a big difference for us:*

**Our relationships:** *those that are between us, the Kimo team, our cherished customers and suppliers.*

**Kimo Technicians Academy:** *Created for our plumbers to grow their technical & professional skills so they can provide customers with highest quality of service. The academy organizes seminars and trainings by experts in the field.*

# Bathrooms

- ACCESSORIES
- BASIN MIXERS
- BASINS
- BATH MIXERS
- SHOWER ENCLOSURES
- SHOWER SETS
- SPECIAL NEEDS
- VANITY CABINETS
- WATER CLOSETS
- BATHTUBS AND SHOWER TRAYS
- WATER HEATERS
- WHIRLPOOLS

*The highest quality bathrooms from World Class brands such as Laufen, Axor, Hansgrohe & Ideal Standard as well as Tona, CRW, Ctesi and Delicacy. With a rich variety to suit every taste & ranges that provide unbeatable value at every single price point.*



# hansgrohe

## Meet the beauty of water.

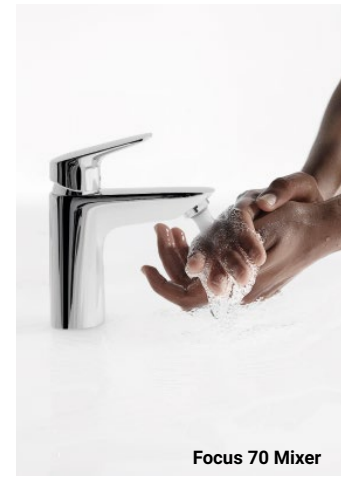
If you love beautiful design in the bathroom and kitchen and recognise the importance of excellent quality, hansgrohe is for you. At hansgrohe, you will find an abundance of premium products for showers, bathrooms and kitchens.

## “Made by Hansgrohe” also means “Designed for Life”.

For almost 120 years now, hansgrohe has been using their German engineering skills and their eye for detail to develop innovative products, technologies and functions with a long service life. Hansgrohe partners with top notch designers who combine aesthetics and functionality to create products that are a force to reckon with in the bathroom and kitchen industry.



Talis Mixer



Focus 70 Mixer



Talic C Mixer



Rain Shower

**Modern design  
and refreshingly  
high-quality  
products.**

# AXOR®

AXOR creates mixers and showers that strive for perfection of function and form. From classic to modern to avant-garde, every collection, range and one-of-a-kind product for bathroom or kitchen represents the highest standards of design, technology and manufacture. Created in collaboration with internationally renowned architects and designers. AXOR products have been setting the benchmarks for innovation, exclusivity and individualization for more than 25 years.





CRW BATHROOMS has been one of the largest sanitary ware manufacturers in the world. For decades of brand building, CRW has won a high reputation for innovation and customer satisfaction with a complete line of sanitary ware, ranging from steam cabinet & shower cabinet, whirlpool & bathtub, shower enclosure & shower panel, ceramic basin & toilet, bathroom cabinet, and bathroom fittings.



**Simple and modern designs.  
Relaxing bathroom experience**



CTESI presents a range and bathroom accessories that are a perfect blend of contemporary design and excellent functionality. CTESI, efficacious in its functions offers innovative concepts & full design.

The focus on quality of CTESI products is a fundamental point, guaranteed by the precision in the production and assembly and by the use of rigorous tests that allows having reliability in the quality of each CTESI product.



**Innovative  
concepts for  
an enhanced life.**

# DELICACY®

If you want top quality shower enclosures, practical and modern designs that will last long and add to the overall beauty of the bathroom, look no further.

Delicacy has been in this business since 1996, and has a variety of models that will complement your bathroom space design or layout.



IO

# LAUFEN

Bathroom Culture since 1892  [www.laufen.com](http://www.laufen.com)

The personality of this highly traditional Swiss brand reflects a symbiosis of design, quality and functionality. One of the world's leading manufacturers with global distribution over the past 125 years.

The Company's core competence is its knowledge in the area of sanitary ware manufacturing. Their state-of-the-art manufacturing plants, coupled with their legendary Swiss precision and high degree of practical benefit ensures an enjoyable experience by the end-user.



II

# TONA

Bathroom Vanity

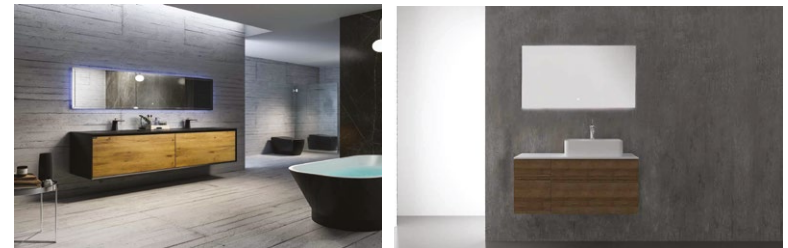
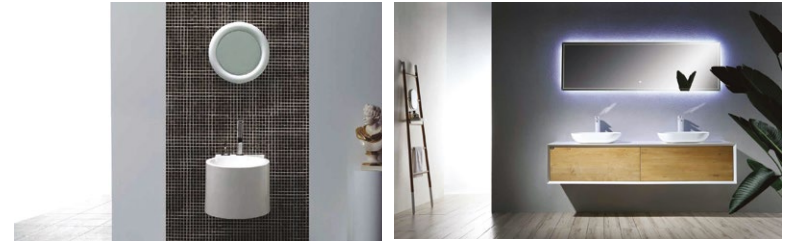


TONA is an international sanitary ware brand which advocates advanced sanitary ware culture and is known for its superb German craftsmanship and unique cutting-edge design.

TONA's design is inspired by the natural elements, pursuing the design concept of "Less is more".

The brand logo of European daisy, which has fresh temperament, exquisiteness, reflects the brand's vigor and vitality.

Their decade-long record as a manufacturer of German style bathroom furniture has taught them how to excel in precision and purity to meet people's imagination of fashionable household products with modern minimalist cutting-edge design and new materials.

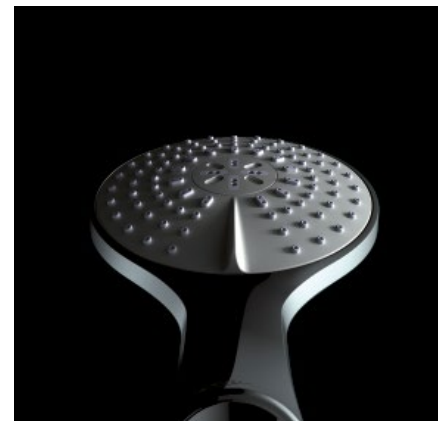
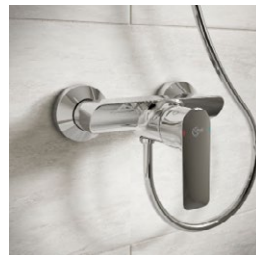






### A Beautiful Use of Space

IDEAL STANDARD is one of the leading manufacturers of products and solutions for private and public bathrooms. Ideal Standard has been shaping the bathroom industry for over 100 years, and they continue to develop and innovate to bring customers effective, high quality and durable products that achieve new levels of efficiency, hygiene and convenience. Whether it's a cleaner, quieter flush, or a more invigorating shower Ideal Standard constantly challenge themselves to give customers the best experience possible.

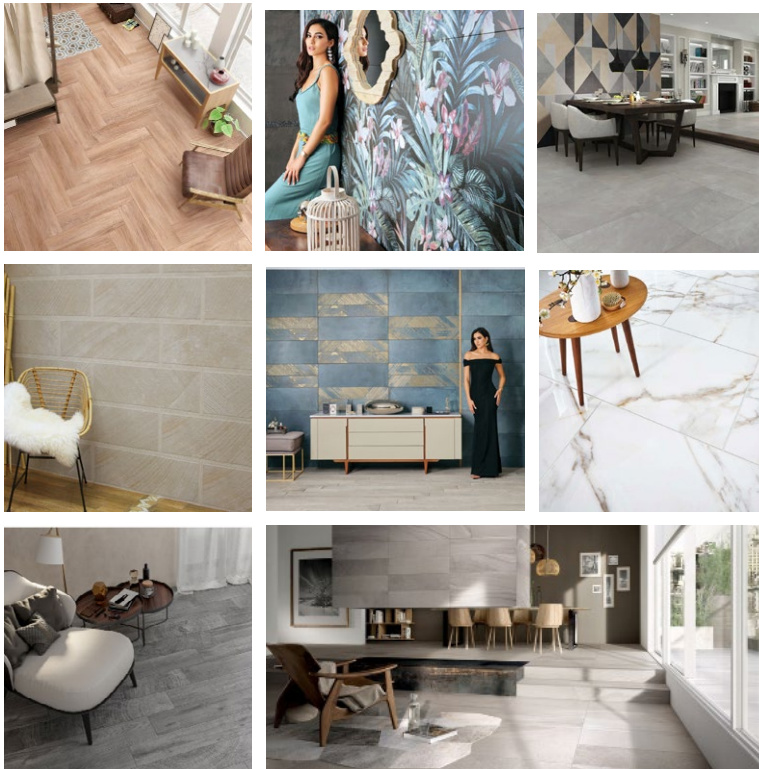


**A beautiful use of space.**

# Tiles

**WALL  
FLOOR  
KITCHEN  
BATHROOM  
DECORATIVE**

*The highest quality tiles in fresh, contemporary & classic designs, sizes & price points. We have been selling tiles for 25 years, we've seen brands come & go, we only pick the best choices that offer unbeatable value. from Spain, Italy, Turkey and India*



# Kitchens

*We consider each design as a masterpiece, tailor-made to suit our clients' personal preferences and to create their living passion. Once the design has been approved, we ensure that the cupboards are design-specific. The careful and skilful installation of the units are crucial to get the desired effect and we check up on the installation teams regularly.*

**We provide 3 types of offering when it comes to kitchens.**

## **1. Ready to Go**

*Simplest option of all. Trendy kitchens from world class designers, at an unbeatable value & best of all, you can take home what you like with you right away. Think kitchen in a box!*

## **2. Tailored Packages**

*Based on the limitless variety of designs & styles, we put together a combination that waters your palette.*



## **3. Bespoke Creations**

*We help you build your dream kitchen from scratch. Every hinge to counter top is picked & built to specification.*



# Projects

While we are known for our retail business, we have been partnering with developers, architects, designers & organizations across Ghana & West Africa for over two decades.

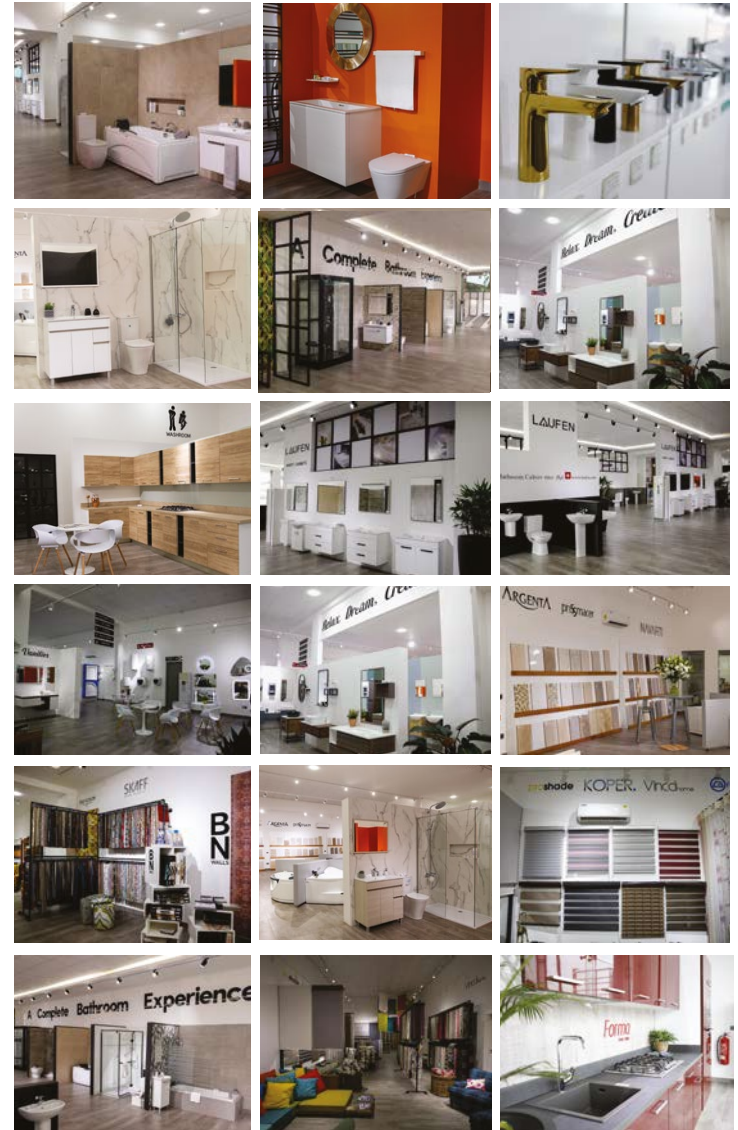
Through our deep passion for creating spaces that inspire and our deep understanding of the tile, bathroom, kitchen business, we approach each project as a creative partner vs a supplier mentality.



# Some of our Clients



# Our Showroom





Martey Tsuru Street, Plot 18-20 near Manet Junction  
Spintex

Tel: 0900-200-000 | Cell: +233 244334947 +233 244030411

**INTERIORS:** Martey Tsuru Street, Plot 18-20 near Manet Junction  
Spintex.

Tel: +233244711341 | +233555668010