

Protecting the  
**AUTOMOTIVE**  
Industry



# Protecting the **AUTOMOTIVE** Industry



**STAMPING**  
PAGE 2



**BODY SHOP**  
PAGE 3



**MACHINING**  
PAGE 4



**PAINT SHOP**  
PAGE 5



**MOLDING**  
PAGE 6



**FINAL ASSEMBLY**  
PAGE 7



**LOGISTICS**  
PAGE 8



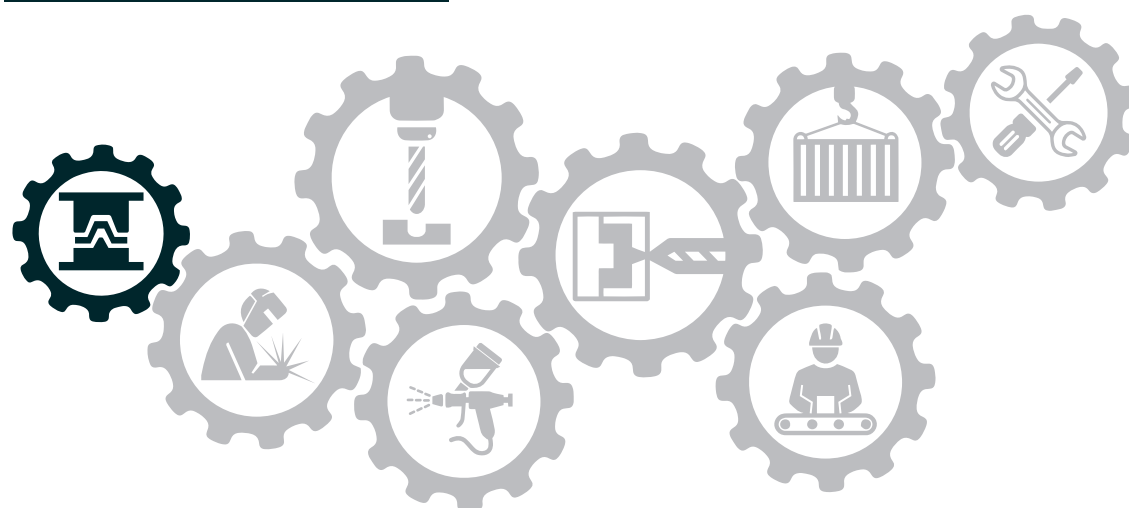
**MAINTENANCE**  
PAGE 9



**MULTI-PROCESS**  
PAGE 10-11

From stamping, machining, and assembly to molding, logistics, and any process in-between, Majestic is committed to protecting those who work in the automotive industry. We intensify safety standards by providing reliable and quality personal protective equipment for the roughest work conditions.





# STAMPING

## APPLICATIONS

Stamping and press tool operations

Parts handling with sharp, unfinished surfaces and edges

Sheet metal and panel handling

## USER NEEDS

Users require gloves that provide **cut**, **puncture** and **abrasion resistance** with considerable **dexterity** and **tactility** while offering **exceptional grip** in **dry**, **wet** and **oily conditions**.



### 37-3565



Light weight Dyneema® Diamond knit.  
Foam nitrile palm with reinforced nitrile thumb crotch.  
Touch screen capable.  
Radiates heat away from hands.  
CE 5 / ANSI A3 cut resistance.



### 37-1505



Dyneema® Diamond knit.  
PU coated palm.  
High cut resistance.  
Cool and comfortable fit.  
CE 5 / ANSI A4 cut resistance.



### 35-7675



KorPlex knit.  
Sandy nitrile palm coating for great dry and oily grip.  
High cut and puncture resistance.  
Cool and comfortable fit.  
CE 5 / ANSI A6 cut resistance.

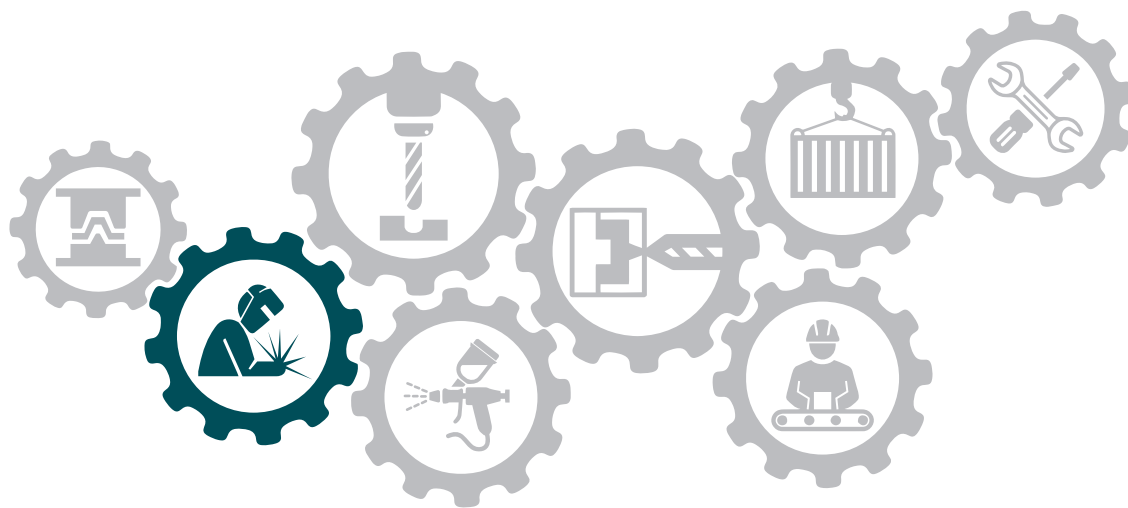


### 35-1306



KorPlex knit.  
PU coated palm for excellent dexterity.  
Cool and comfortable fit.  
CE 3 / ANSI A2 cut resistance.





# BODY SHOP

## APPLICATIONS

Parts handling for  
inspection & selection

Welding, riveting, bolting  
& bonding

Body components  
assembly, handling &  
inspection

## USER NEEDS

Ultimate safety requires  
**protection against cuts,**  
**punctures, abrasion,**  
**heat** and **spatter** while  
providing **exceptional**  
**grip** in **dry, wet** and **oily**  
**conditions.**



### 31-1365



Lightweight Kevlar® knit.  
Fantastic grip, dexterity and wear resistance.  
Touch screen capable.  
Exceptional micro foam nitrile palm coating.  
CE D / ANSI A4 cut resistance.



### 37-3435



Lightweight Dyneema® Diamond knit.  
White PU coated palm to reduce residue.  
Maximum fit, feel, and comfort.  
Cool and comfortable fit.  
CE 4 / ANSI A3 cut resistance.



### 3120



Heavyweight Kevlar® knit.  
Remarkable protection from cuts and heat.  
Leather palm provides intense puncture resistance.  
Tremendous dexterity & grip in wet or dry applications.  
ENAO7 contact heat level 1 / ANSI A4 cut resistance /  
ANSI Puncture 4

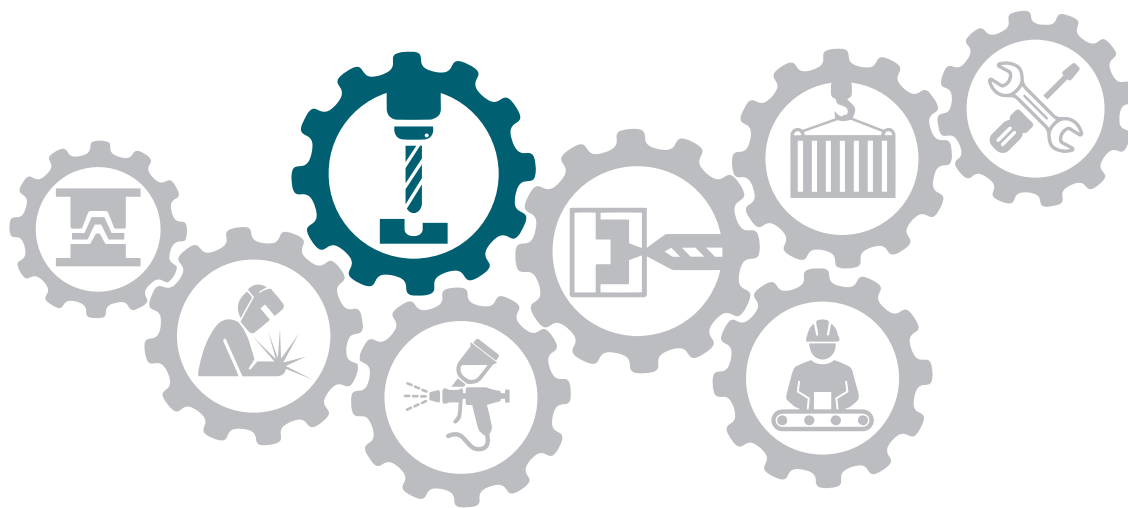


### 35-3465



18-gauge lightweight KorPlex knit.  
Unique bi-polymer palm dip & reinforced thumb crotch.  
Touch screen capable.  
Cool and comfortable fit.  
CE C / ANSI A3 cut resistance





# MACHINING

## APPLICATIONS

Handling machined parts with sharp, rough edges

Body components assembly, handling & inspection

Parts assembly & metalworking

## USER NEEDS

Users require gloves that provide **cut, puncture** and **abrasion resistance** with considerable **dexterity** and **tactility** while offering **exceptional grip** in **dry, wet** and **oily conditions**.



### 35-6375

KorPlex knit  
Double dipped nitrile coating for great dry and oily grip.  
Protection from oil to knit wrist.  
Excellent fit to protection properties.  
CE 3 / ANSI A2 cut resistance.



### 3237

SuperDex knit.  
Double dipped nitrile coating for great dry and oily grip.  
Embossed palm to deviate oil and liquids from palm.  
Protection from oil to knit wrist.  
Comfortable fit.



### 3369

SuperDex knit.  
Hydropellent coating to knuckle.  
Excellent dry, wet, and oily grip.  
Cool and comfortable fit.



### 3228K

SuperDex knit.  
Micro foam nitrile palm coating to knuckle.  
Great grip and abrasion resistance.  
Cool and comfortable fit.





# PAINT SHOP

## APPLICATIONS

Body inspection

Body repair & cleaning

Application of paint  
and coating by robotic  
machinery

## USER NEEDS

Personal protection needs include **lint and silicone free, chemical resistant hand protection** and **antistatic garments** with **sweat resistant** properties.



### 3240

M-Chem nitrile glove.  
Chemical, snag, puncture and abrasion resistant.  
Raised diamond pattern for improved grip.

.....



### 3352AG

Super grip disposable gloves.  
Powder free nitrile glove with fish scale palm pattern.  
Excellent grip in dry and oily environments.  
Strong for improved life.  
Chemical resistant.

.....



### 3276AK

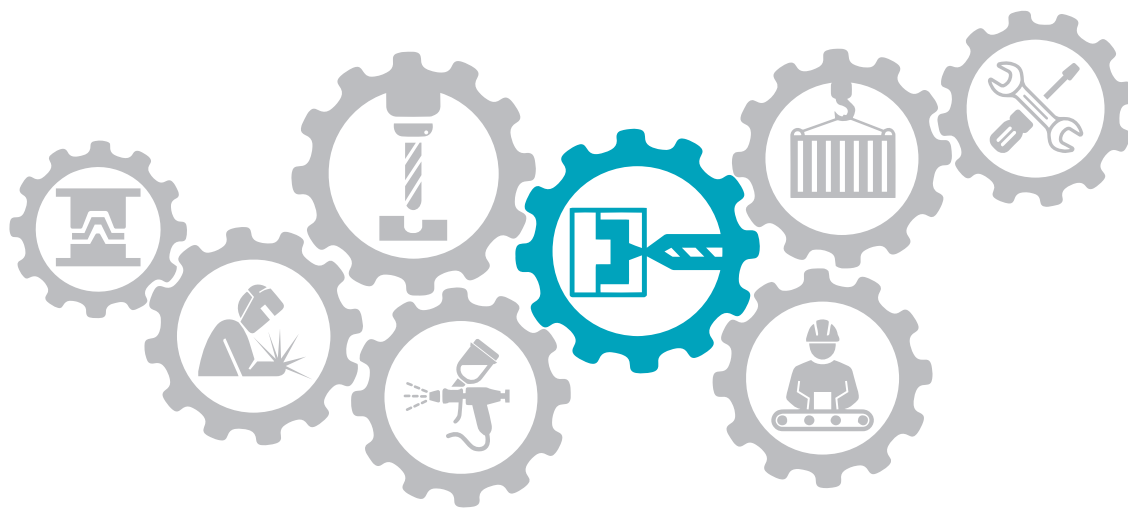
Super grip disposable gloves.  
Powder free nitrile glove with fish scale palm pattern.  
Excellent grip in dry and oily environments.  
Also available in orange; item 3276AO.  
6 MIL and chemical resistant.

.....



### 3276

Premium industrial grade nitrile disposable glove.  
Powder free.  
Puncture resistant.  
Chemical resistant.



# MOLDING

## APPLICATIONS

Injection-compression molding

Molded components handling & inspection

Press equipment inspection & care

## USER NEEDS

Users require gloves that provide **cut, abrasion and contact heat resistance** with **dexterity and tactility** while offering **exceptional grip in dry conditions**.

Low heat applications only



### 3227

Kevlar® knit.  
Foam nitrile palm coating.  
Contact heat resistance.  
CE 3 / ANSI A2 cut resistance.



### 37-3436

Lightweight Dyneema® Diamond knit.  
Gray PU coated palm for excellent dexterity.  
Tremendous fit, feel, and comfort.  
CE 4 / ANSI A3 cut resistance.



### 3119

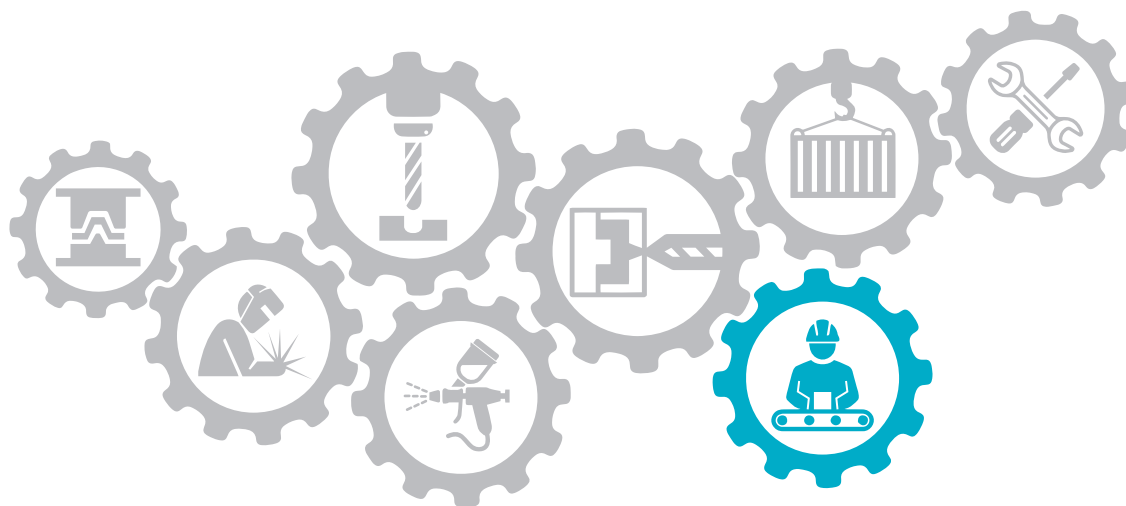
Heavy weight Kevlar® knit.  
High cut resistance.  
Contact heat resistance.  
ANSI A3 cut resistance.



### 3202

Jersey lined work glove.  
Palm and finger dipped nitrile coating.  
Excellent grip in wet & oily applications.  
Safety cuff.





# FINAL ASSEMBLY

## APPLICATIONS

Chassis & body shell assembly

Small parts handling

Binding & adjusting components & parts

## USER NEEDS

Final assembly work requires **protection against cuts, punctures, and abrasion**, while providing **exceptional dexterity and tactility**.



### 3437

Ring spun Dyneema® Diamond knit.  
PU coated palm for excellent dexterity.  
High cut resistance.  
Maximum fit, feel and comfort.  
CE 5 / ANSI A3 cut resistance.



### 37-1300

Dyneema® Diamond knit.  
Extremely lightweight 18-gauge knit.  
PU coated palm for excellent dexterity.  
Maximum fit, feel and comfort.  
CE 3 / ANSI A2 cut resistance.



### 37-343N

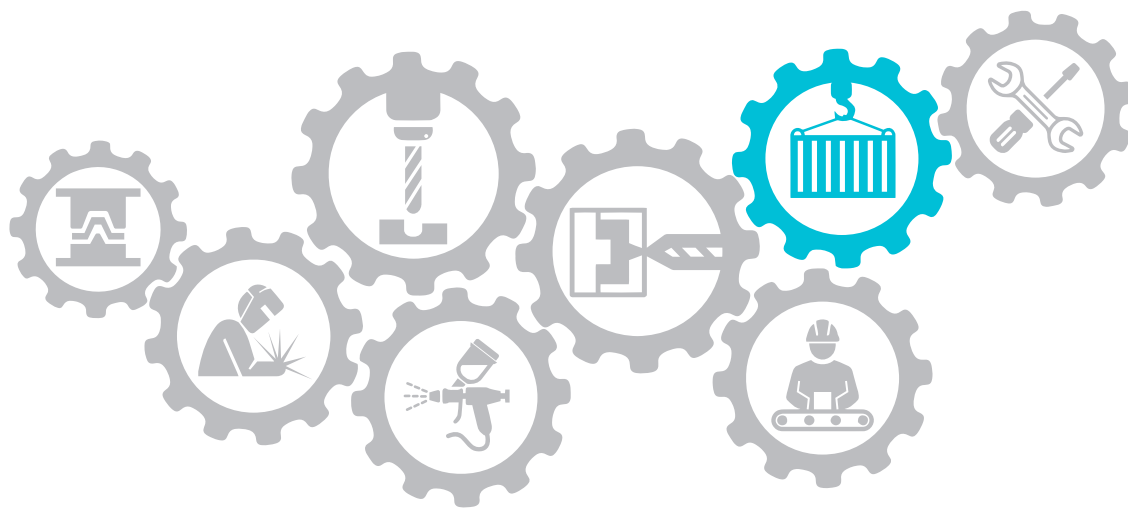
Dyneema® Diamond knit.  
PU coated palm for excellent dexterity.  
Heavier knit high performance cut resistant material.  
Cool and comfortable fit.  
CE 4 / ANSI A3 cut resistance.



### 3432

SuperDex knit.  
PU coated palm for excellent dexterity.  
Cool and comfortable fit.





# LOGISTICS

## APPLICATIONS

Parts & components  
delivery

Production line  
replenishment

Support vehicle operation

## USER NEEDS

Workers in logistics expect gloves that offer **protection against cuts, abrasion & cold weather** with **considerable dexterity and tactility** while offering **exceptional grip in dry, wet and oily conditions**.



### 51-290

OXXA Knit.  
Superior nitrile palm coating.  
Maximum grip and abrasion.  
Cool and comfortable fit.



### 35-3365

18-gauge lightweight KorPlex knit.  
Superior nitrile palm coating & reinforced thumb crotch.  
Maximum grip and abrasion.  
Cool and comfortable fit.  
CE 3 / ANSI A2 cut resistance.



### 3228HVY

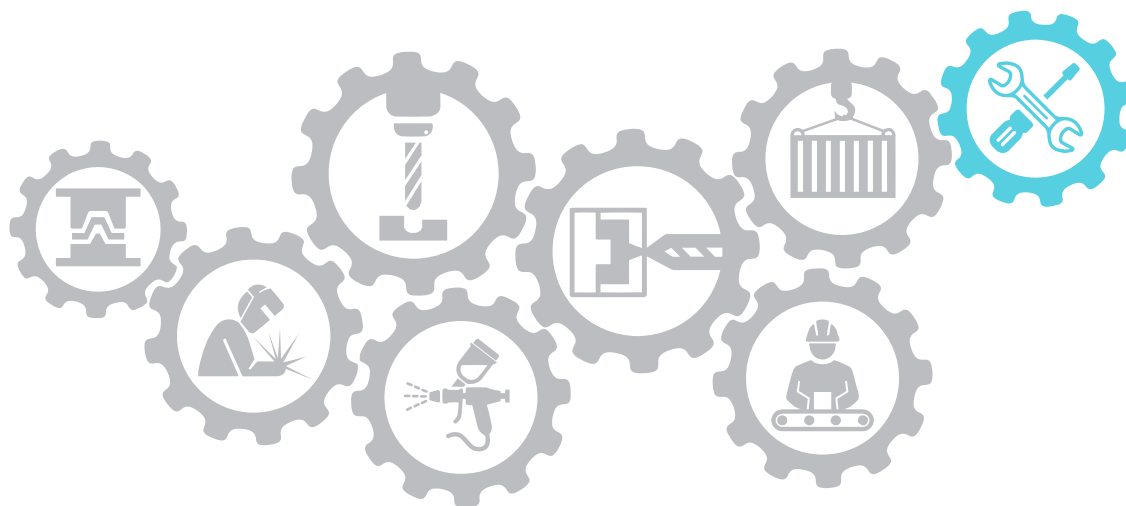
SuperDex knit.  
Micro foam nitrile palm coating.  
Great grip and abrasion.  
Cool and comfortable fit.  
High visibility.



### 3225

SuperDex knit.  
Foam nitrile palm coating.  
Great grip and abrasion.  
Cool and comfortable fit.





# MAINTENANCE

## APPLICATIONS

Production equipment  
maintenance & repair

Support of all  
manufacturing processes

Large & small parts  
handling

## USER NEEDS

Personal protection  
needs include **protection**  
**against cuts, abrasion**  
and **contact heat** with  
**considerable dexterity**  
and **tactility**.



### 34-5337

Ringspun Dyneema® Diamond knit.  
PU coated palm for excellent dexterity.  
Impact resistant back of hand.  
Maximum fit, feel and comfort.  
CE 5 / ANSI A3 cut resistance.



### 3276AO

Super grip disposable gloves.  
Powder free nitrile glove with fish scale palm pattern.  
Excellent grip in dry and oily environments.  
Strong for improved life.  
6 MIL and chemical resistant.



### 3228

SuperDex knit.  
Micro foam nitrile palm coating for great dry and oily grip.  
Great grip and abrasion.  
Cool and comfortable fit.

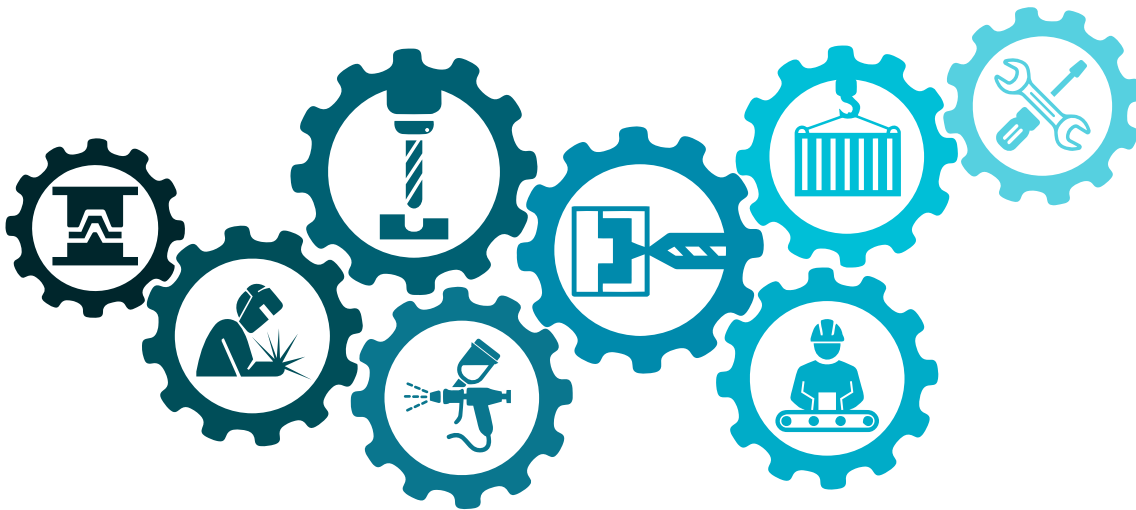


### 3368

SuperDex knit.  
Hydropellent palm coating.  
Excellent dry, wet and oily grip.  
Cool and comfortable fit.







# MULTI-PROCESS

## APPLICATIONS

Stamping  
Body Shop  
Machining  
Molding  
Final Assembly

## USER NEEDS

Personal protection needs include **protection against cuts, abrasion and contact heat.**



### 3147

Dyneema® knit.  
Form fitting two-ply for additional protection.  
Resistant to snagging & tears.  
Vents heat to remain cool.  
CE 5 / ANSI A4 cut resistance.



.....



### 3145

Kevlar® medium weight knit.  
Provide arm and wrist protection from cuts and heat.  
Resistant to snagging & tears.  
Vents heat to remain cool.  
CE 5 / ANSI A3 cut resistance.



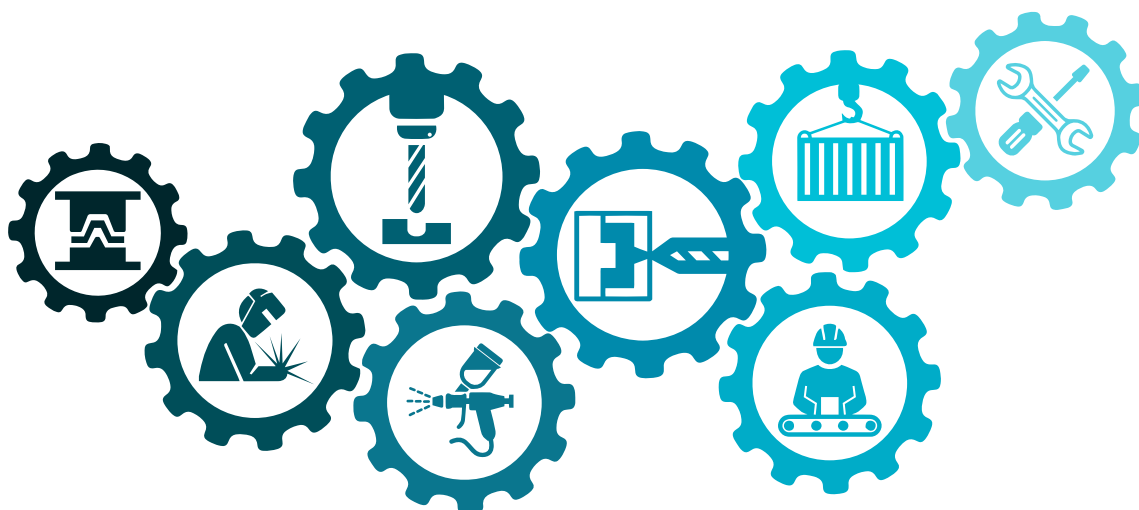
.....



### 3150TH

Dyneema® knit.  
Gusseted bicep to provide extra stretch and comfort.  
Single-ply.  
Thumbhole for better dexterity.  
CE 3 / ANSI A2 cut resistance.





# MULTI-PROCESS

## HIGH-VIZ CLOTHING

Available in different styles and colors

## HARD HATS

Available in different colors

## PROTECTIVE EYEWEAR

Available in different styles and lens colors



### 75-3201

High visibility mesh safety vest is excellent for applications requiring added visibility. Meets ANSI/ISEA 107-2015 Class 2, Type R Standard. Also available in orange.



### 75-3239

High visibility mesh safety vest with chainsaw pattern and black bottom for areas that get the most soiled. Meets ANSI/ISEA 107-2015 Class 2, Type R Standard. Also available in orange.



### 87-1105/87-1155

#### Cap-Style Hard Hat

4 and 6-point suspension cap style hard hats provide head and impact protection in the industrial workplace



### 87-1255

#### Full Brim Hard Hat

6-point suspension cap style hard hats provide head and impact protection in the industrial workplace



### 85-1010

#### Crosswind Safety Glasses

Ultra lightweight wraparound frame with anti-scratch lens and 99.9 % UVA/UVB protection.



### 85-2010

#### Wrecker Safety Glasses

Wraparound frame with anti-scratch lens, soft padded nose piece, anti-fog+ and 99.9 % UVA/UVB protection.





KORPLEX

KORPLEX Technology is an engineered yarn that blends some of the strongest known fibers to produce ultimate cut resistance. Its properties offer tactility and flexibility while maintaining exceptional cut resistance and extreme comfort.



## Minimum cut risk. Maximum savings.



Improve hand safety program compliance by providing the most comfortable protective gloves. Cut resistant gloves made with Dyneema® Diamond Technology protect from cut hazards, and feel comfortable for the entire shift. Reduce injury risk and costs. **Let's create the world's safest hands.**



HEALTH • NUTRITION • MATERIALS

## DRIVING SAFETY INNOVATION

**When it comes to safety, we never take shortcuts.**

You know Kevlar® fiber for its unmatched strength and cut resistance, but sharp objects aren't the only danger that gloves made with Kevlar® are up against. In fact, Kevlar® fiber is inherently flame resistant, which provides a superior heat protection to keep you even safer. With this all-around defense against heat and sharp objects, gloves made with Kevlar® are the clear choice for the automotive industry.



**Kevlar.**





HAND  
PROTECTION



PROTECTIVE  
CLOTHING



EYE  
PROTECTION



FOOT  
PROTECTION



ARM  
PROTECTION



RESPIRATORY  
SAFETY



HEAD  
PROTECTION



ACCESSORIES

# INTENSIFY YOUR SAFETY STANDARDS

Majestic is committed to your safety. We provide reliable and quality personal protective equipment for the roughest work conditions. By combining the quality of traditional craftsmanship with the latest technological and material advancements, Majestic delivers safety equipment and apparel that exceeds performance expectations so you can get the job done.







CE Cut Level 5  
ANSI Cut Level 4

X15  
BY MACHISTIC

ANUGALEHEAD™  
39-6676



HAND  
PROTECTION



PROTECTIVE  
CLOTHING



EYE  
PROTECTION



FOOT  
PROTECTION



ARM  
PROTECTION



RESPIRATORY  
SAFETY



HEAD  
PROTECTION



ACCESSORIES

Majestic Glove  
2510 W. Casino Rd.  
Everett, WA 98204

P: 800-367-4568  
F: 425-407-1030  
[orders@majesticglove.com](mailto:orders@majesticglove.com)  
[majesticglove.com](http://majesticglove.com)