

THESE FABRICS COMBINE WITH LONDON BIRDS LB

Below is a selection of fabrics which will compliment London Birds LB.

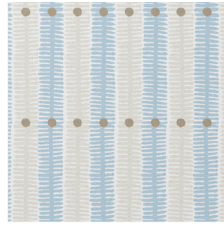
Choose which ones you like and order samples.

Find the fabrics by name by using the search feature on the website

Look for the download link on the product page



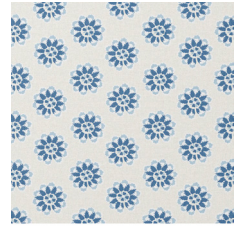
London Birds light blue



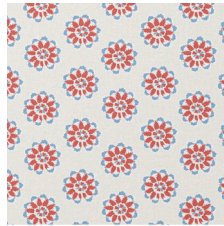
Zara soft blue



Zara storm



Circles blue



Circles red-blue



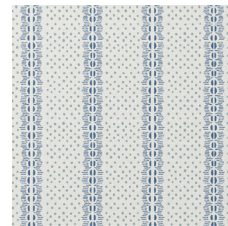
Circles blue-green



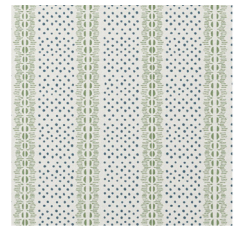
Totty blue



Totty green



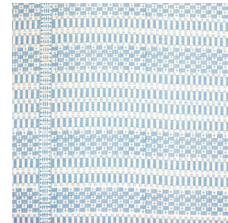
Elinor blue



Elinor green



Phoebe blue



Victoria blue



Tea for two soft blue