

THESE FABRICS COMBINE WITH FLAMINGO

Below is a selection of fabrics which will compliment the Flamingo fabric.

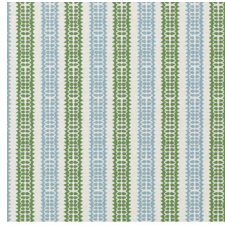
Choose which ones you like and order samples.

Find the fabrics by name by using the search feature on the website

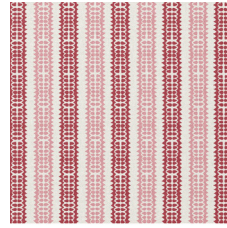
Look for the download link on the product page



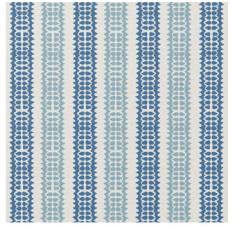
Flamingo fabric



Totty green



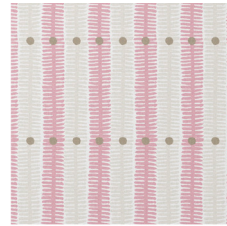
Totty red



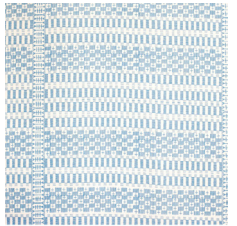
Totty blue



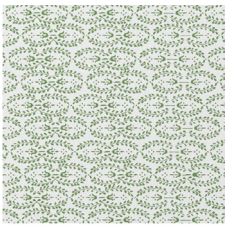
Zara green



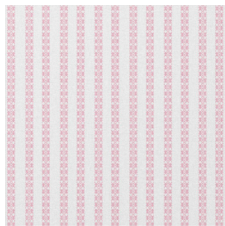
Zara soft pink



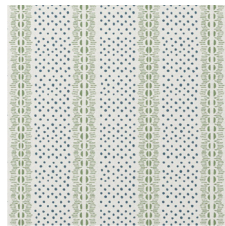
Victoria blue



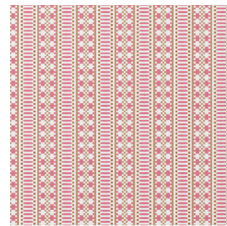
Grace Vertly



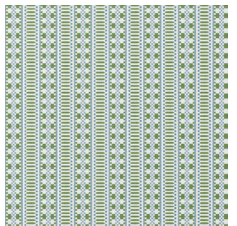
Zinal Stripe rose



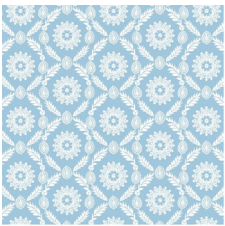
Elinor green



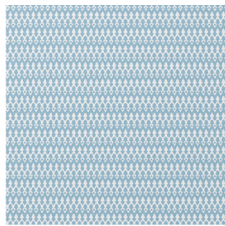
Poppy dark pink



Poppy green



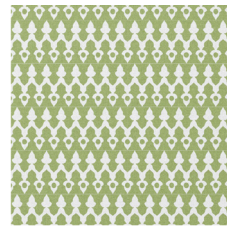
Rosie Pretty blue



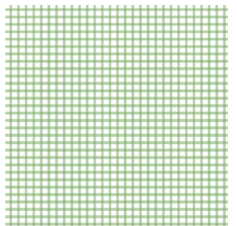
Tea for two warm blue



Tea for two soft blue



Tea for two (green)



Check Green



Georgie girl 2 pinky



Priscilla pink



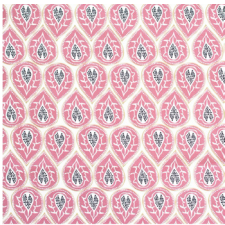
Sarah-Jane pink



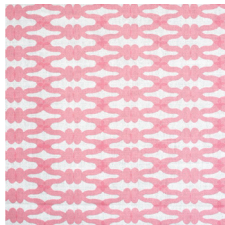
Sarah-Jane green



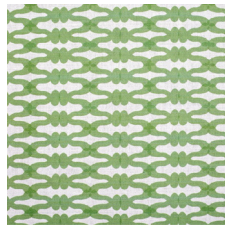
Sarah-Jane light blue



Bertie Pink fabric



Knot Pinky Poch



Knot Vertly



Phoebe pinky green



Halo Pinky Poch