

# THESE FABRICS COMBINE WITH ELIZABETH BLUE

Below is a selection of fabrics which will compliment Elizabeth blue.

Choose which ones you like and order samples.

Find the fabrics by name by using the search feature on the website

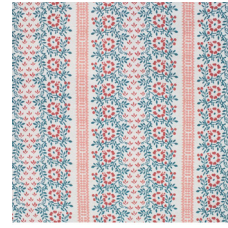
Look for the download link on the product page



Elizabeth blue



Sarah Jane red



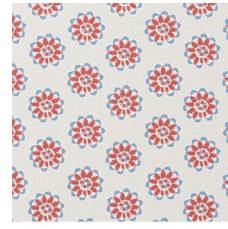
Suzanne red



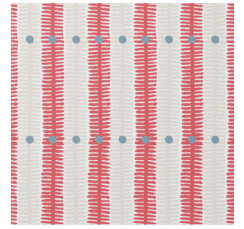
Totty red



Lilly red



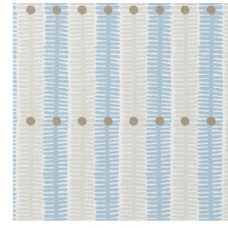
Circles red-blue



Zara red



Zara soft pink



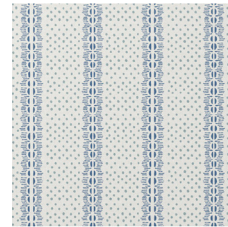
Zara soft blue



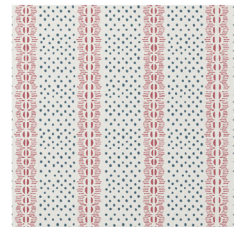
Zara storm



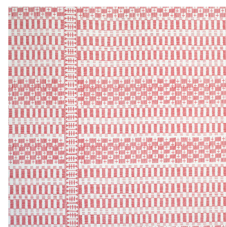
Sarah-Jane light blue



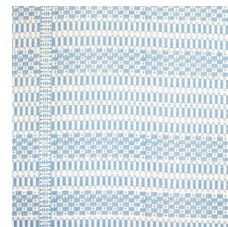
Elinor blue



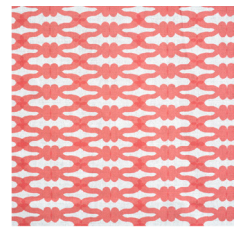
Elinor red



Victoria red



Victoria blue



Knot Tom Tom



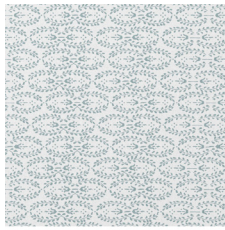
Halo Tom Tom



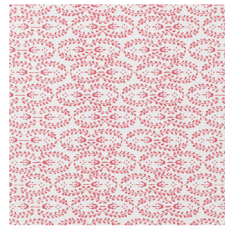
Halo Blizzard



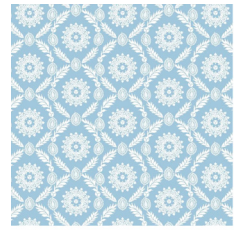
Knot Blizzard



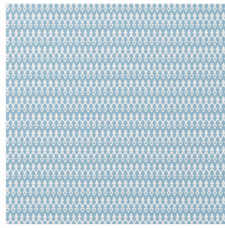
Grace Blizzard



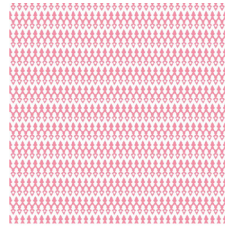
Grace Tom Tom



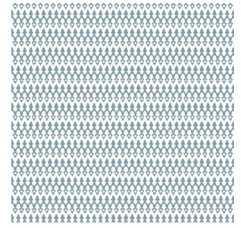
Rosie Pretty blue



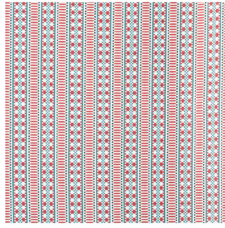
Tea for two warm blue



Tea for two raspberry/pinky



Tea for two storm



Poppy red