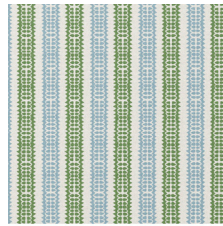


THESE FABRICS COMBINE WITH AFRICAN FATHER

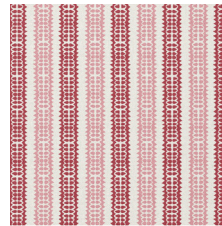
Below is a selection of fabrics which will compliment the African Father
 Choose which ones you like and order samples.
 Find the fabrics by name by using the search feature on the website
 Look for the download link on the product page



African Father



Totty green



Totty red



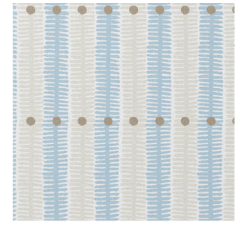
Totty blue



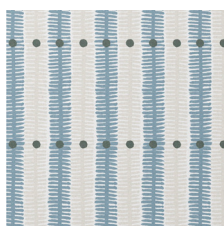
Zara green



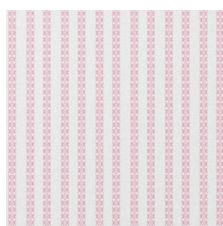
Zara soft pink



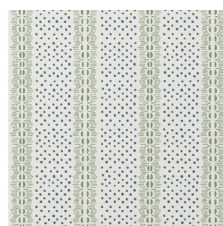
Zara soft blue



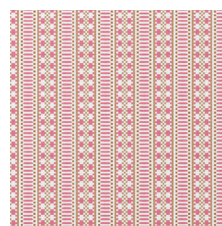
Zara storm



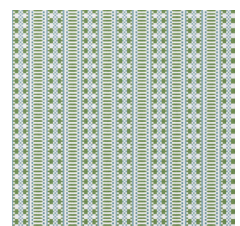
Zinal Stripe rose



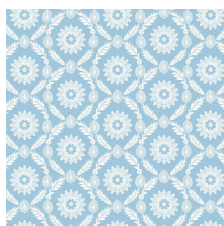
Elinor green



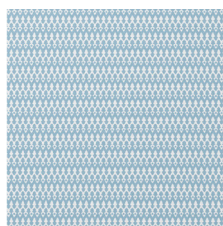
Poppy dark pink



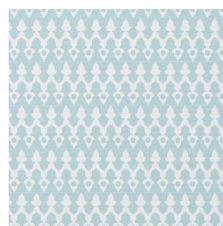
Poppy green



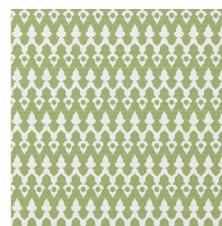
Rosie Pretty blue



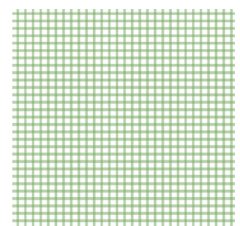
Tea for two warm blue



Tea for two soft blue



Tea for two (green)



Check Green



Georgie girl 2 pinky



Priscilla pink



Sarah-Jane pink



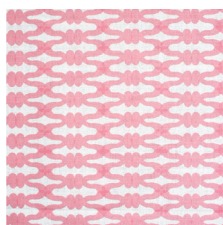
Sarah-Jane green



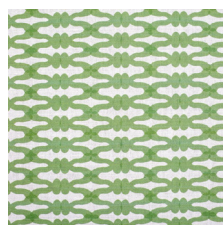
Sarah-Jane light blue



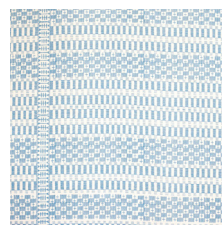
Bertie Pink fabric



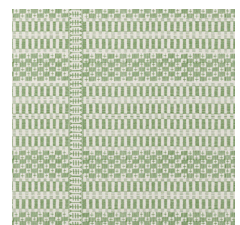
Knot Pinky Poch



Knot Verty



Victoria blue



Victoria green