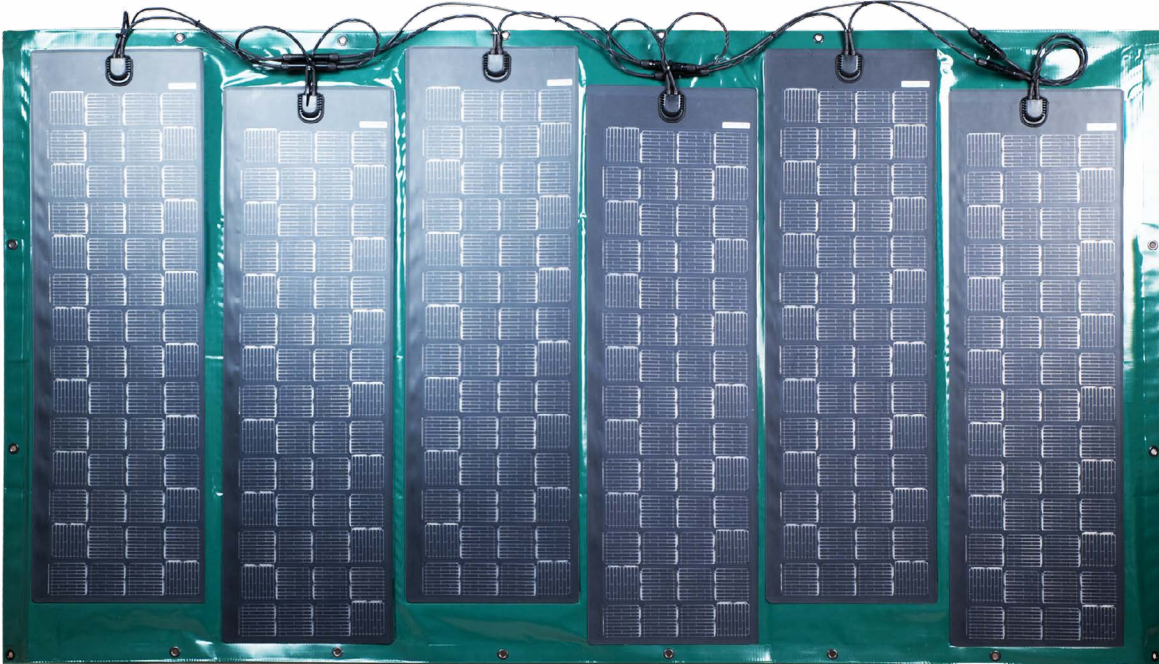


INITIAL SETUP GUIDE



QuickStart Guide: How to use your SunTarp

1. Open your SunTarp to determine whether it is wired in parallel or series.
2. Find your solar generator, charge controller, etc. (whatever you will plug the SunTarp into) and check based on the specifications of the unit whether your SunTarp is wired for the solar input. Use the guide in the technical specifications section for reference.
3. Carry your SunTarp under your arm for maximum efficiency.
4. Find a location that is unobstructed by trees.
5. Place your HexFold and unfold it carefully.
6. Ideally, to maximize performance place it oriented South. If possible use the surroundings a way to position it as close to a 45 degree angle but not in a way that the panels could be scratched.
7. Check your solar generator and make sure the charge controller is turned on and ready to receive power. For many solar generators, this will mean that the breakers need to be flipped in the “on” position.
8. Now that your panels are set up, use the “final” MC4 connectors (the male and female connectors at the edge of the panel) to connect to your PV extension cable/input cable (depending on how far away you want the SunTarp to be from the device being charged).
9. Connect this extension cable into the solar generator.
10. Using the solar generator’s screen or Bluetooth output confirm that the unit is being charged and receiving solar. If not, make sure the connections are firm and that the panels are being exposed to the sun.