



MUSO

**BUILDING RAPID, UNIVERSAL  
HEALTH CARE SYSTEMS:**

**OUR PARTNERSHIP FOR IMPACT**

**October 2020-September 2021**



# CURING DELAY

The COVID-19 pandemic has deepened the inequities within an already unequal global health system. Around the world, the poorest, most marginalized patients continue to receive health care too late, or not at all.

In partnership with Thankyou Fund, over the past year we delivered rapid health care to 370,000 people in Mali, uninterrupted in the face of significant challenges. For the first time, we committed to grow our direct reach beyond Mali's borders, and readied to launch sites in Côte d'Ivoire.

To ensure actors around the world are equipped with the evidence they need to deliver care with speed, we made important strides in our research and technical assistance.

We are profoundly grateful for the Thankyou team's belief in and support of this vision, and for standing with Muso and our patients as we have responded to complex challenges, together redesigning national health systems for speed, access, and equity.

**No one should die waiting for care. Together, we have worked to cure delay by advancing a new global health model.**



# TABLE OF CONTENTS

**PROACTIVE  
HEALTH CARE  
DELIVERY IN  
MALI**

4-7



**EXPANDING  
OUR REACH  
TO CÔTE  
D'IVOIRE**

8-9



**RESEARCH  
TO DRIVE  
GLOBAL  
IMPACT**

10



**TECHNICAL  
ASSISTANCE  
FOR SYSTEMS  
CHANGE**

11



**GRANT  
MILESTONES**

13

**OUR  
PARTNERSHIP**

14

# PROACTIVE HEALTH CARE DELIVERY IN MALI

Over the past year, Muso's 424 Community Health Workers (CHWs) delivered health care to 370,000 patients in Mali with speed. CHWs conducted more than 2,000,000 home visits—averaging more than 500,000 visits to their neighbors' doorsteps per quarter, or 1,265 visits by a single CHW in a year. They additionally supported patients to make thousands of visits to government-run clinics for quality care, and in our peri-urban site CHWs treated 94% of children within 24 hours of symptom onset. CHWs and clinicians, supported by COVID-19 safety measures, remain key frontline actors ensuring no one dies waiting for the health care they deserve.



**2,146,286**  
**HOME VISITS**

by Community Health Workers for active case finding, diagnosis, treatment, and follow-up



**94%**  
**OF CHILDREN**  
**TREATED IN 24 HOURS**

Of children under five reached by veteran CHWs, an average of 94% were treated within 24 hours of symptom onset



**164,785**  
**COMPREHENSIVE**  
**CLINIC VISITS**

at strengthened government health centers without fees

**DELIVERING CARE WITHOUT INTERRUPTION**



*I help my community through household visits, going door-to-door to learn more about their struggles. It is not just that I serve the community but I am the community and I love what I do, which is why I strive to improve every single day. ”*

— Bassaran Doumbia, Muso CHW

# PROACTIVE HEALTH CARE DELIVERY IN MALI

Like other parts of our urbanizing world, the communities of Yirimadio—a peri-urban area on the outskirts of Mali’s capital city, Bamako—are chronically under-resourced. Delivering universal health care in a rapidly urbanizing environment means continuously building teams, infrastructure, and systems to meet the growing population with care.

Together with the Malian government and local community partners Muso has built the YiriBa Health Center: a new, government-run community health center in Yirimadio. When it opens its doors this year, this state-of-the-art facility will support 60,000 of Yirimadio’s most vulnerable patients to receive rapid, accessible health care in line with our quality standards. It will additionally provide new capacity and resources to overstretched health care providers at the Yirimadio Health Center—previously the only clinic serving the area’s rapidly growing population.

The YiriBa clinic was named for the phrase “the Big Tree” in Bamanankan, a lingua franca of Mali. It means a place of import that brings and binds communities together.




**BUILDING A NEW CENTER OF CARE**

*I serve my community primarily as a healthcare provider, but I also serve as a friend, a brother, a son.* ”

— Dramane Konate, Muso CHW

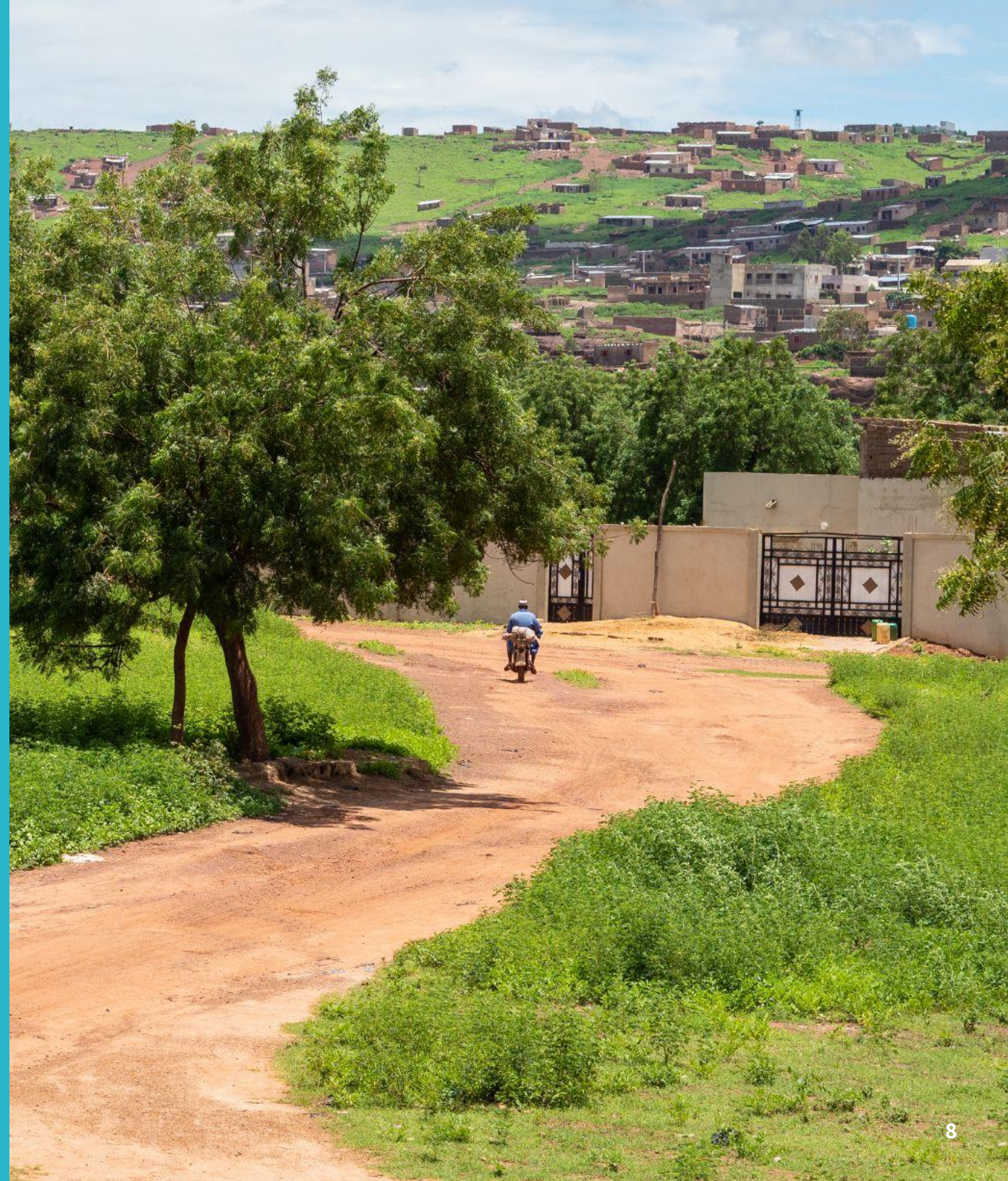




# EXPANDING OUR REACH TO CÔTE D'IVOIRE

To end delay as a cause of death in other geographies, Muso is growing the reach of our Proactive Care model from Mali to other countries. Muso has determined our first direct service expansion country, and this year we launched a long-term partnership with the government of Côte d'Ivoire. Over the next decade, in line with the 2030 Sustainable Development Goal targets, we will together pursue rapid, universal access to health care for Côte d'Ivoire's more than 20 million people, and an end to the country's maternal and child mortality crises. We are gearing up to launch operations, and plan to open our first site by early 2022.

**SCALING SPEED-BASED STRATEGIES**





# EXPANDING OUR REACH TO CÔTE D'IVOIRE

Together with the government of Côte d'Ivoire, we aim to ultimately care for approximately 310,000 people. This will allow us to fully cover two districts, the basic unit of analysis for the Ivorian Ministry of Health. This will enable us to reach sufficient coverage to shape national policy, achieve our strategic plan goal for patient care to reach a minimum of 550,000 patients by 2023, and allow us to optimize efficiency in terms of cost per person served.

We aim to ultimately fully cover two health districts, Madinani and Adzopé, as well as part of a third, Kouto. The district of Adzopé is less than 100 kilometers away from Abidjan, which will facilitate visits to our intervention sites for government partners.

These sites meet our criteria pertaining to need, and capture the regional, cultural, linguistic and political diversity of the country. We are currently assessing equipment, infrastructure, and human resources needs for all 58 clinics for all three phases of rollout.

## → Step 1: Reach 7,000 people

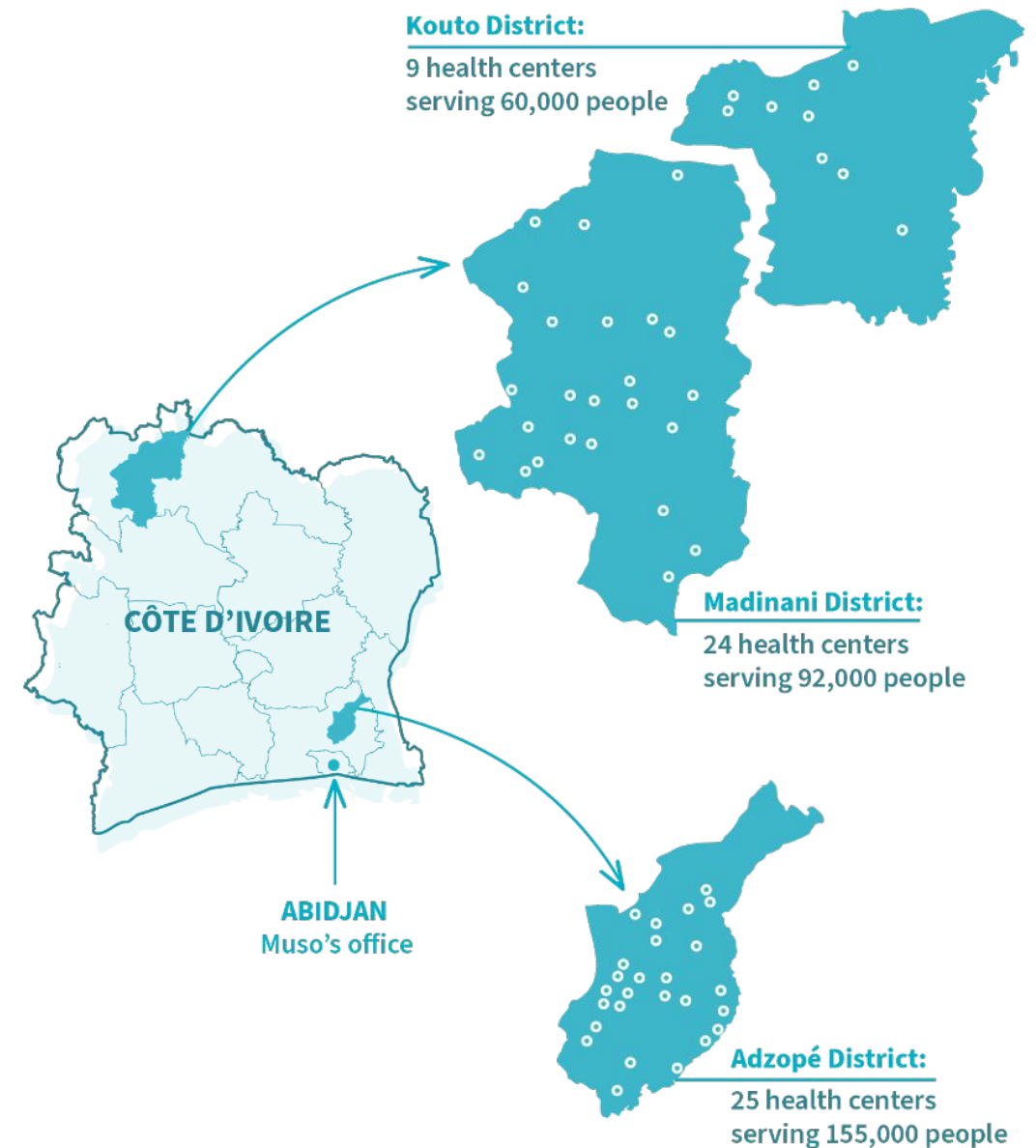
Launch our first test site, Diapé, serving approximately 7,000 patients, and one clinical site. Make rapid iterative adjustments to test and troubleshoot operational and programmatic approaches in a new country context.

## → Step 2: Reach 160,000 people

Launch care for an additional 150,000 patients across 29 clinics. Collect baseline data for our research trial immediately prior to launch.

## → Step 3: Reach 310,000 people

Launch care for an additional 150,000 patients and 28 clinics, for a total of approximately 310,000 patients served across 58 clinics.



## OUR EXPANSION PLAN

# RESEARCH TO DRIVE GLOBAL IMPACT

Muso embeds rigorous research, monitoring, and evaluation into our care delivery to rigorously test the impact of our care delivery, and build the global evidence base on community health. Our evaluation systems are designed to measure speed, reach, and quality of care.

Muso conducted one of the world's largest trials in community health, the ProCCM Trial. Our team concluded endline data collection for this study in 2020, with more than 200 surveyors working tirelessly to outpace COVID-19 and finish data collection before the virus arrived in the region of our rural sites. The ProCCM Trial surveyed more than 100,000 people over three years, and will help us learn whether proactive door-to-door case detection by CHWs saves more lives than a passive workflow for CHWs, which is the current global standard.

With Thankyou's support, Muso and our academic partners have cleaned an ocean of data points in the past year, and are now

finalizing data cleaning, currently on track for completion by the end of 2021.

We have experienced some delays to data cleaning for this trial as our academic partners aggregated data from multiple sources, and managed COVID-19 challenges within their communities. We expect to have preliminary results for the main effects analysis around the end of 2021, and submit the findings for publication in early 2022. We anticipate publishing secondary analyses from this massive study for years to come.

We have additionally readied to share study findings with our government partners and other key global actors, offering technical assistance to support use of study findings in policy and practice. Planning of dissemination strategies is underway, and our team is building plans to reach three key audiences: research actors, global influencers, and media and general audiences.



137 VILLAGES



100,000 PEOPLE



7 RURAL SITES



3 YEARS  
2017-2020

# TECHNICAL ASSISTANCE FOR NATIONAL & GLOBAL SYSTEMS CHANGE

Muso has driven forward our technical assistance (TA) in the face of significant contextual challenges. Our TA chases impact for tens of millions of people, and over the past year we have:



Supported rapid national COVID-19 response programs, including running Mali's national contracting and monitoring program



Provided embedded support to Mali's health system reform, from strategic planning to preparing legislation for domestic financing of CHWs, in the face of challenges



Engaged with the government of Côte d'Ivoire to begin determining long-term health system TA priorities



Co-designed and deployed an oxygen initiative to reach all of Mali's district and regional hospitals, which is nearing our goal of 100% coverage



Collaborated with the Ivorian government towards scaling dedicated CHW supervision nationally in Côte d'Ivoire



Advanced our research to transform global health systems, and planned advocacy strategies to equip actors with key learnings

*Our work centers around health. We provide care to people through the support of Muso but we want our movement to be bigger, we want more people to become involved. We go door-to-door every day in different households and we encounter numerous barriers... but people depend on us and I think it's important for this to become a collective fight. This goes beyond Muso, beyond the government.... If other people can find interest and join our cause, I will feel like my voice mattered. ”*

— Aissata Coulibaly, Muso CHW



# GRANT MILESTONES

Together with Thankyou Fund, over the past year Muso has:

- Cared for **370,000** of our neighbors in Mali
- Delivered **2.1M** doorstep home visits and supported **165K** visits to quality government clinics
- Treated **94%** of children in peri-urban Mali within 24 hours of symptom onset
- Built a **new, state-of-the-art clinic** to reach some of Mali's most at-risk patients
- Delivered **uninterrupted care** to our patients in Mali during the COVID-19 pandemic
- Prepared to analyze and share results from one of the world's largest community health **research studies**
- Launched a **new partnership** with the government of Côte d'Ivoire
- Identified and readied to launch **second country health care delivery sites** with embedded research
- Embedded in the Malian and Ivorian health systems to improve care for more than **40M people**
- **Strengthened capacities** across departments to prepare for growth





## OUR PARTNERSHIP FOR COMMUNITY HEALTH IMPACT

Pete, Justine, Daniel, and the whole Thankyou team, *thank you* for your transformative partnership with Muso. We are profoundly grateful for your support that has made our impact over the past year possible. Your model funding practices, unrestricted grant, and advocacy within funding networks are acts of solidarity with Muso. You have supported the day-in, day-out work of Community Health Workers who walk miles under the Saharan sun to care for their neighbors, and you are a key partner on our path to make sure that no patient anywhere is left behind in the fight for global health justice. Thank you.