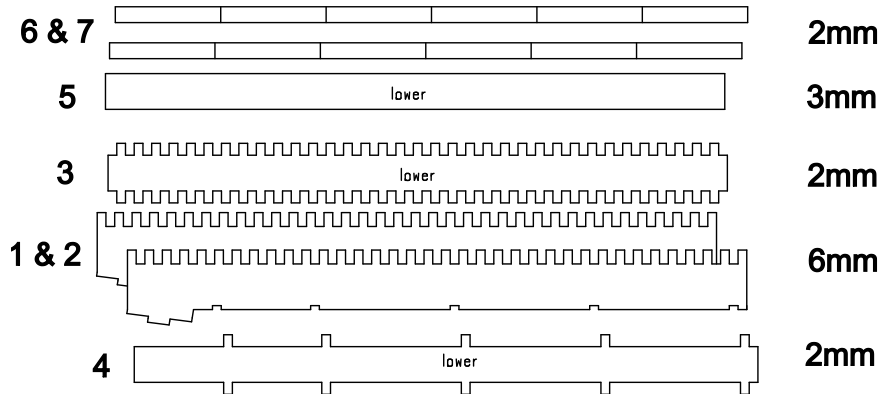


# V1 Launch Ramp

## Instructions

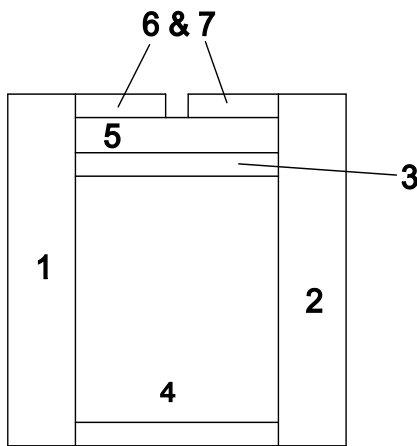
Always “dry run” parts before gluing with a woodwork quality PVA.

Sort the ramp long strips into two piles. To assist with getting the correct lengths together some parts have been labelled “upper” or “lower”.



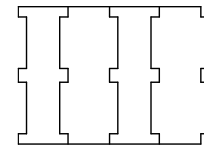
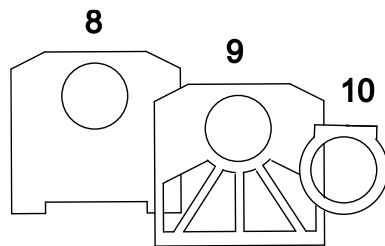
Select the lower pair of 6mm sides and glue on the “comb” part 3 and base part 4 to make a hollow square sectioned tube. **Note:** Glue the writing on the inside! Once together, glue on the 3mm strip (part 5), followed by the two 2mm thin strips. Ensure the engraved lines are on the outside and glue butted up to the 6mm sections, leaving a channel up the middle. **Repeat for the upper section.**

shown 200% for clarity

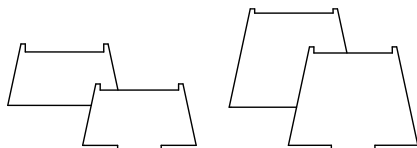
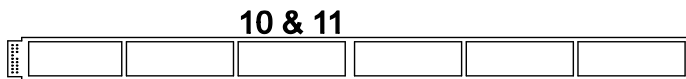


The illustration on the left shows the tube construction in section. To complete the end detail, glue on parts 8, 9 & 10.

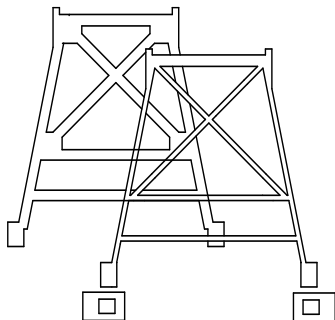
Align the side panels to the flat end and glue in place with the perforated end projecting



Glue these pieces together to make a hollow tube, trim to fit **inside** the main ramp and when a close fit is made; glue in approximately ½ way down, with ½ still projecting. This makes a secure join. NB. The upper section can remain a push fit so the ramp can be taken apart for storage. Glue on the 3mm platform and fix

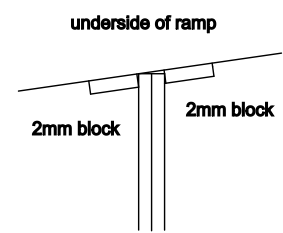


Glue 6mm ramp supports together and fix to the 2mm base using the engraved lines as a guide. NB the middle section should **OVERLAP** to strengthen the join of the two base plates.



Match up the girder ramp supports and glue back to back, glue on the 3mm “shoes” and glue to the base plate using the engraved lines as a guide. Ensure these are square before the glue dries. Once the upper ramp section has been fixed to the lower ramp section and glued to the girder supports; glue in place the pair of rectangle 2mm pieces, one either side of the upright girder supports to strengthen and to avoid any lateral movement

Repeat this task so both girder struts are firmly anchored in place. \*\*\*If you want to be able to take the model apart for storage, do not glue the ramp to the girder struts.



Thank you for buying this model from:

**Charlie Foxtrot Models**

[charliefoxtrotmodels.com](http://charliefoxtrotmodels.com)