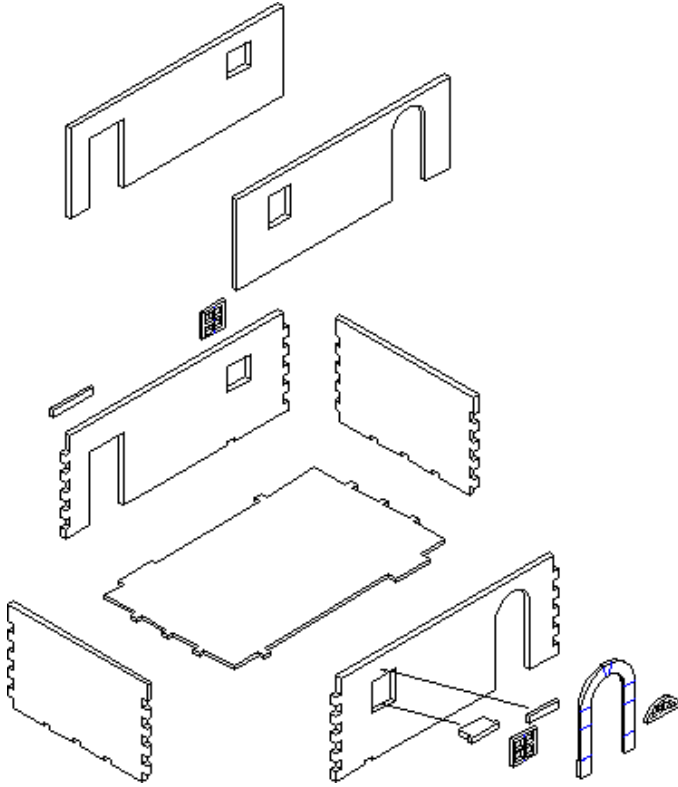


Pantile Ruin A

Instructions

Always "dry run" parts before gluing with a woodwork quality PVA.
Start with the floor and place the MDF on a flat surface.

Ground floor:



Top floor:

Glue the 4 jointed 3mm external walls to the 2mm base.

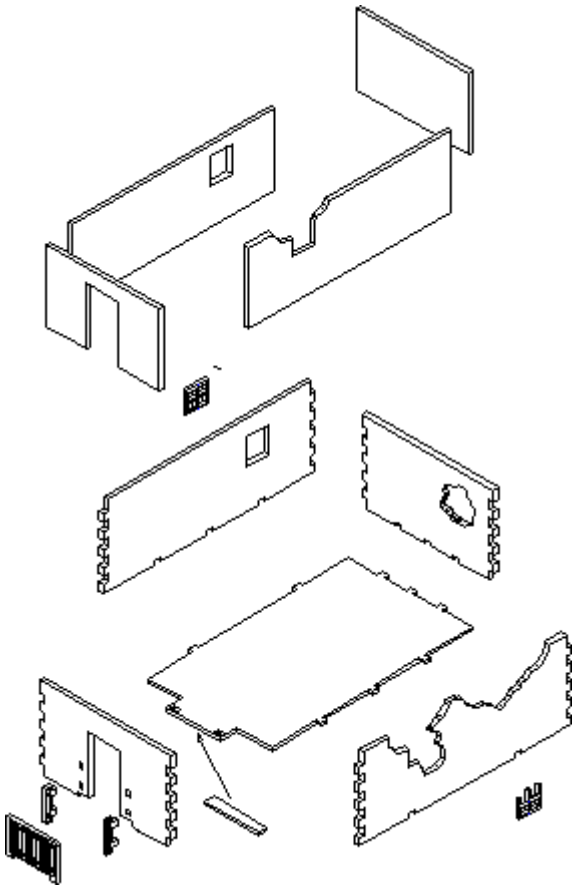
Next, glue in the two 3mm liners to thicken the two longer walls.

Glue in the 3mm windowsill to the front window and then glue on the 2mm lintels to both windows and rear door.

Glue on the front door arched surround.

Set aside to dry.

It is recommended that the windows and doors are painted separately and glued into place once the building has been textured and painted.



For the top floor, follow the instructions for the ground floor after studying this diagram.

NOTE: It is recommended that the two railings pieces are glued into the recesses in the left-hand end wall but NOT the wide railings piece. It is recommended that the wider single railing is painted before gluing onto the building after it has been textured and painted.

Turn the top floor upside down and glue on a 3mm thick square in each corner.

NOTE: Save the single 2mm rectangle pictured towards the bottom of the diagram until last.

Place the assembled top floor onto the ground floor THEN whilst the two are together glue on the underside strip of the balcony. When applying texture, place the top floor onto the bottom so this area is clear of filler and the two floors closely meet up.

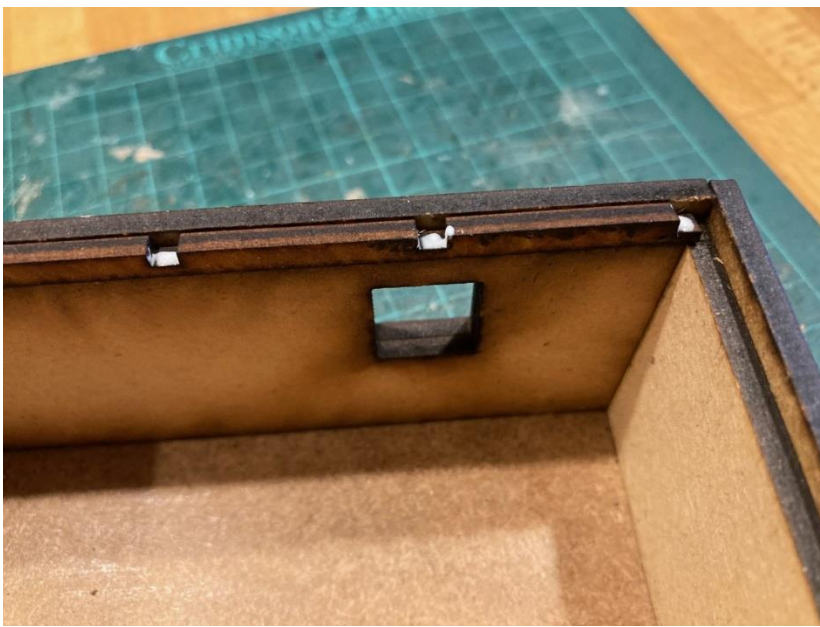


Cut the "A" frames from the frame. Glue on one A frame to a solid wall with the engraved side facing out.

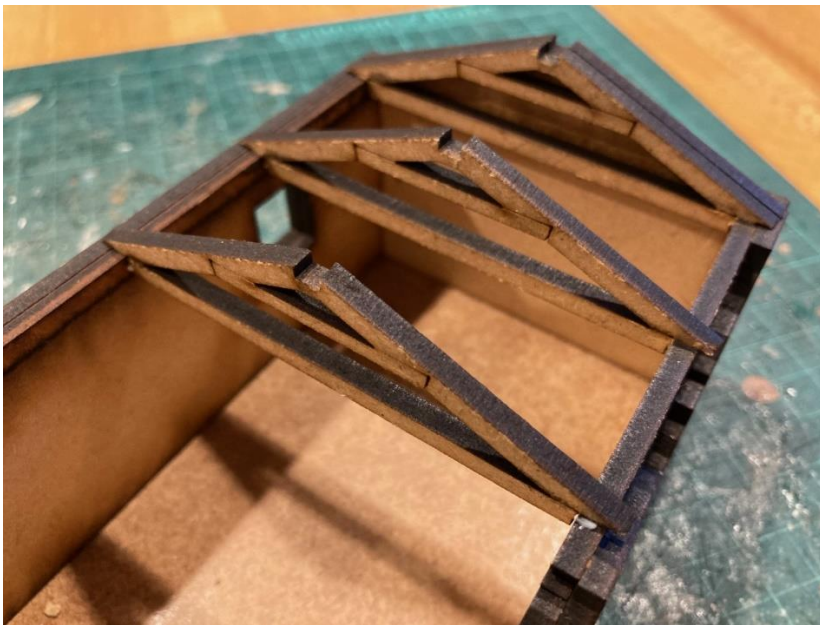
Repeat this for the other side.

Set aside to dry.

NOTE: Please use wood strength PVA for this section as superglue may not give you enough time to assemble the roof. The extended drying time of PVA allows you to "wriggle" and slide pieces together.



On the 3mm frame there are 4 jointed pieces. Remove the longest three. The longest piece is for the ridge at the top. Dab a little glue in the joints of the second longest piece and rest DRY on the back inner wall. Repeat with the next piece and lie along the front inner wall to the RIGHT.



Starting at the right end, glue on the A frame and inner wall, the piece is designed to fit into the joints and rest on the outer walls of the main building.

Infill with the remaining A frames. The damaged piece should be placed 2nd in from the left.

DO NOT glue on the left hand end assembly yet.



Set the main building so the arched front doorway is to your right.

Lay the two damaged planked pieces as shown.



Apply PVA glue along the beams and “post” the rear floor panel through.



When fully inserted and sitting flat,

Slide the floor panel away from you to lock in place the A frames. The floor piece should meet the long horizontal 3mm beam.



Repeat the process by “posting” in the front floor section and sliding forward to locate the A frame beams and sit flat alongside the floor section previously glued in.

When the floor is flat, glue on the left-hand A frame and inner wall assembly.



Brace the A frames and wall gable end assemblies by gluing on the long, jointed beam. Glue on the two gable end “plain” triangles to thicken to 3 layers. Glue on the short horizontal beam to the front left hand side.

Note: Check at regular intervals that you are not gluing the roof to the top floor. Wipe any excess glue off before proceeding.



Turn the roof assembly over and run a bead of superglue along the planked floor seam.

It may be necessary to also run a bead of superglue along the beams to firmly fix to the floor panels.



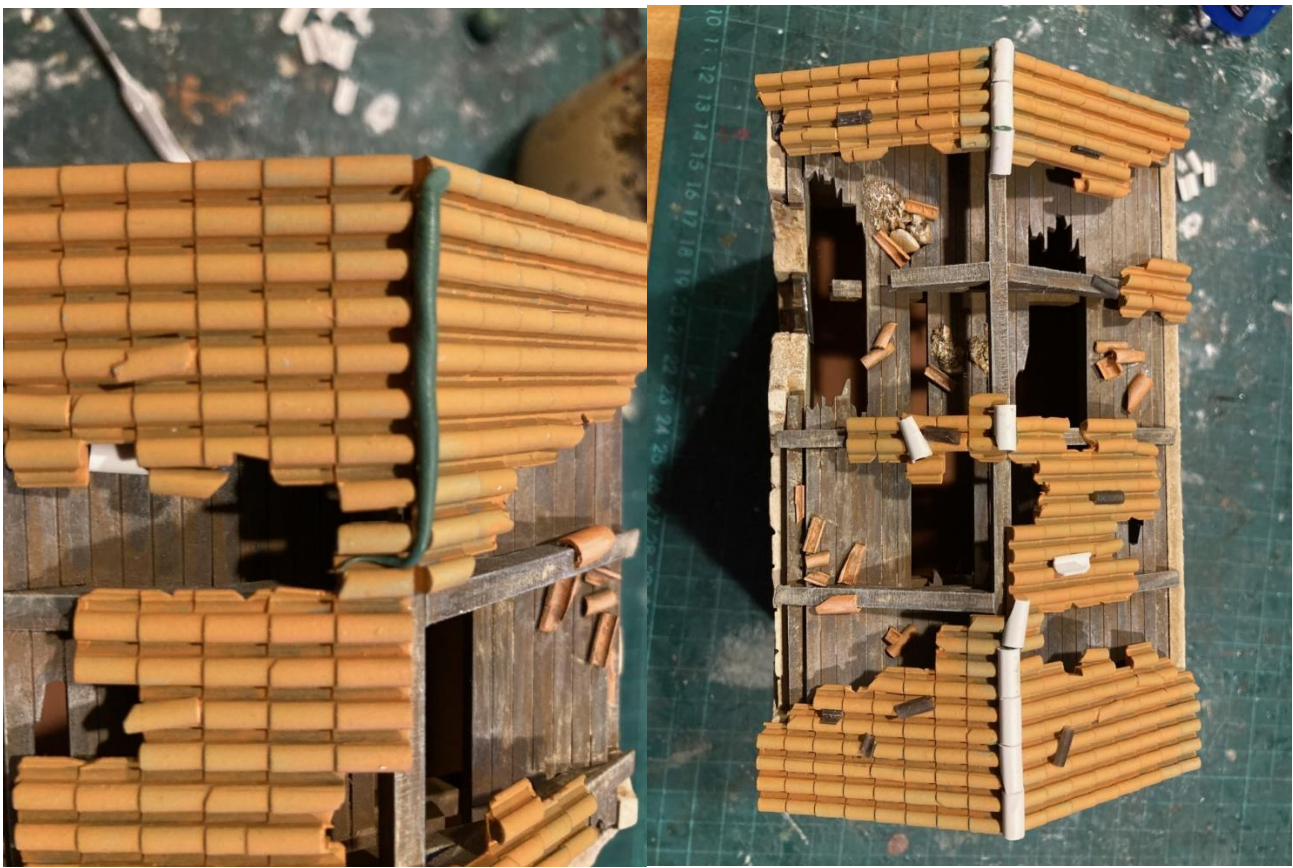
The next step is to texture and paint the building and the roof assembly. Spray prime and paint the roof tile sections on both sides and allow to dry.

Experiment with a configuration of roof tiles which you are happy with. I temporarily fixed mine with blu-tac until I was satisfied with the look. With the positioning done, use grit, sand, the 3D printed single tiles and cut up sections of U shaped plasticard capping tiles to texture and add interest to the wooden planking.

REMEMBER to retain some single tiles and U shaped plasticard to affix to the roof ridge later.

NOTE: it is recommended that you paint the rubble and scatter tiles glued to the planked floor BEFORE you glue on the roof panels.





I ran a "sausage" of greenstuff along the apex of the roof then pressed on the plasticard U sections I had previously cut to size. When the apex is complete, use any left over single tiles and U shaped ridge tiles to scatter onto the roof sections. Once dry, paint to complete the model.

Thank you for buying this model from: **Charlie Foxtrot Models** charliefoxtrotmodels@hotmail.com
www.charliefoxtrotmodels.com