

Pantile House 3

Instructions

Always “dry run” parts before gluing with a woodwork quality PVA.

Start with the floor and place the MDF on a flat surface. Take care not to “mirror flip” pieces that have holes cut out for the resin inserts.

Glue the jointed 3mm external walls to the 2mm base.

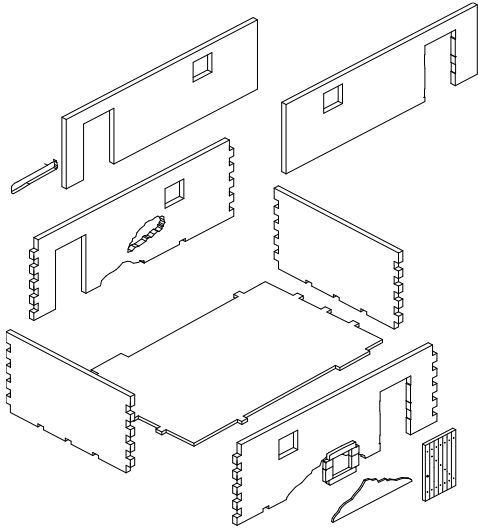
When dry, glue in the corresponding inner walls and check to ensure the walls are accurately lined up and you do not have “staggered” windows and doors.

Glue in the resin exposed brickwork pieces using general purpose / superglue or epoxy resin.

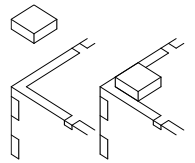
As all windows in this building are the same size, you can glue on lintels or “stone” surrounds as you like.

Glue the stonework surround to the front door and a large lintel above the back door.

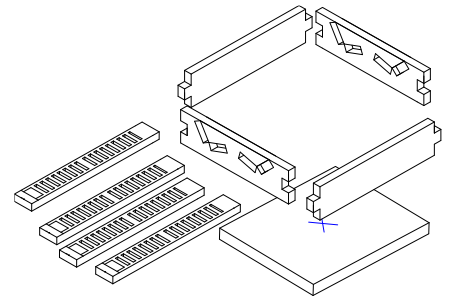
Set aside the ground floor to dry and repeat for the upstairs.



Once complete, turn over the top floor and glue locating blocks underneath taking care to only glue to the 2mm base, leaving the 3mm walls clear.



For the upstairs there is an optional sub-assembly. The flyoor length window can have either a single piece closed shutters or a multi- part open option. Assemble the two rectangles with the slots in (ensuring they both match) using the two rectangle side pieces. A 3mm rectangle, marked with an X is use to ensure the assembly dries square. Do NOT glue in this piece. Once the frame work is dry, carefully slide in the shutters ensuring they are all have the thicker margin to the bottom. This is a delicate operation and two spare shutters are included in the kit in case of damage.



It is recommended that the doors, windows, railings and shutters are painted separately and glue into place once the main building is textured and painted.

To obtain the rustic look of the finished building on the Charlie Foxtrot Models website, please refer to the tutorial in the blog.

In summary: Spread quick drying filler onto the bare MDF walls. Once the filler is dry, glue on random patches of fine sand using PVA. Once the sand is dry reapply random “skims” of filler. Try to partially coat the edges of the sand to bed it into the walls.

The resin roof may need a light filing to ensure a close fit to the walls. If filing or sanding resin or MDF wear a mask and work outdoors.

Thank you for buying this model from: **Charlie Foxtrot Models** charliefoxtrotmodels@hotmail.com
www.charliefoxtrotmodels.com