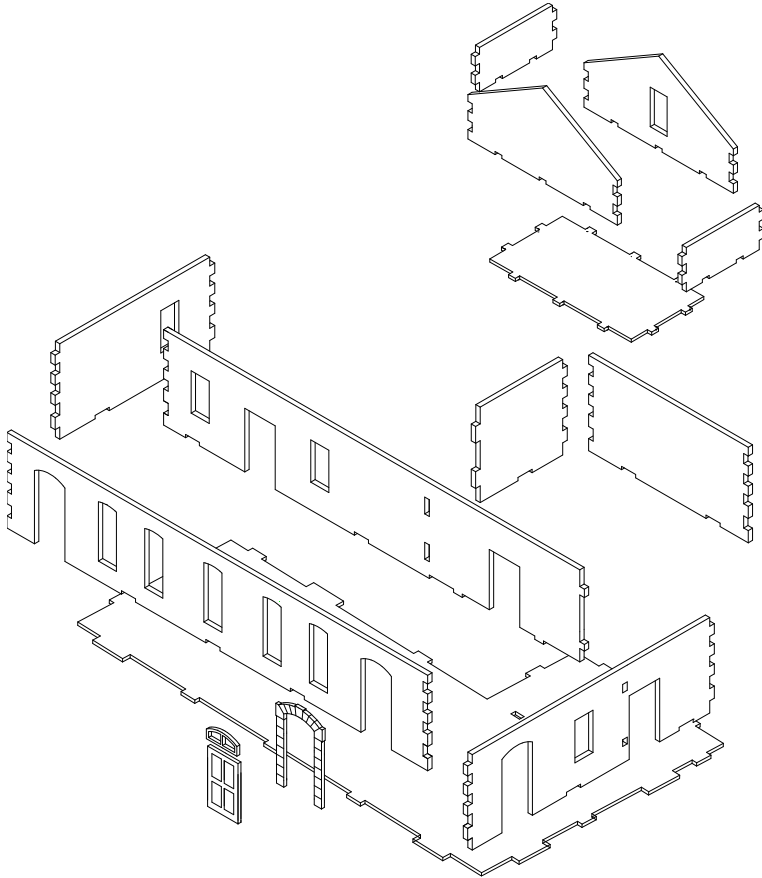


Hotel (Desire Ingouf)

Instructions

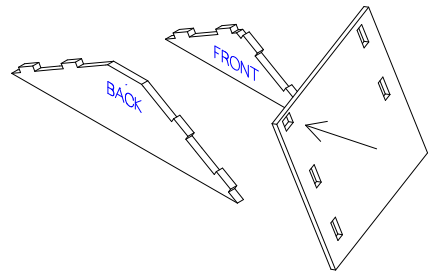
Always "dry run" parts before gluing with a woodwork quality PVA. Start with the ground floor and place the MDF on a flat surface.



Place the ground floor with the extension to your right and glue in the long back wall. Locate the wall in the two slots in the floor. Next, work around the main building gluing in the sides and the front. Glue in the short rear piece followed by the end wall to the extension. Set aside to dry. Repeat for the upstairs.

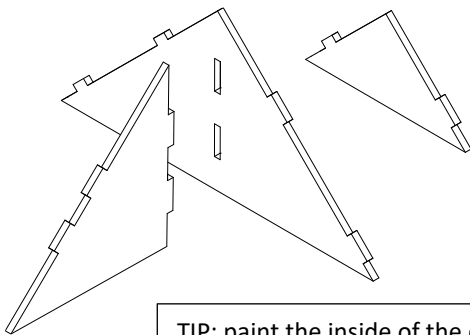
Assemble the mezzanine floor (pictured top right) and allow to dry.

Glue on the door and window surrounds. It is recommended that the doors and window frames are painted and glued in place once the main structure is painted.



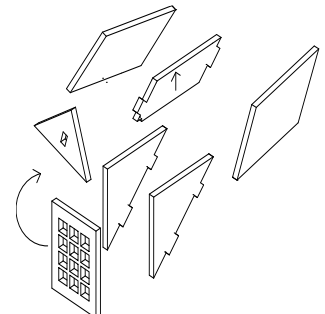
Glue the triangular hipped roof support (below left) to the larger roof support. Lie a large roof section on your work surface and glue on the two large triangular roof supports and the central smaller support.

Insert the two triangular roof supports into one of the roof sections ensuring the arrowed slot is towards the rear of the assembly. Glue the long chimney together and add the two capping pieces. The long chimney will slot into the mezzanine roof. NOTE: the small chimney will need trimming with a craft knife once assembled, to sit on the main roof apex.



Glue the two dormer sides to the roof then place the window in the slot and "rock back" into place. Glue on the top brace ARROW UP. Glue the triangle in place then the large roof panel on the RIGHT

TIP: paint the inside of the dormers before gluing on the dormer roofs.



Glue on the second large roof piece followed by the two sloping end triangles. Align while still wet then set aside to dry.

It is recommended that you spray with primer and then paint using emulsion or acrylic paint.

Thank you for buying this model from: www.charliefoxtrotmodels.com

Charlie Foxtrot Models