

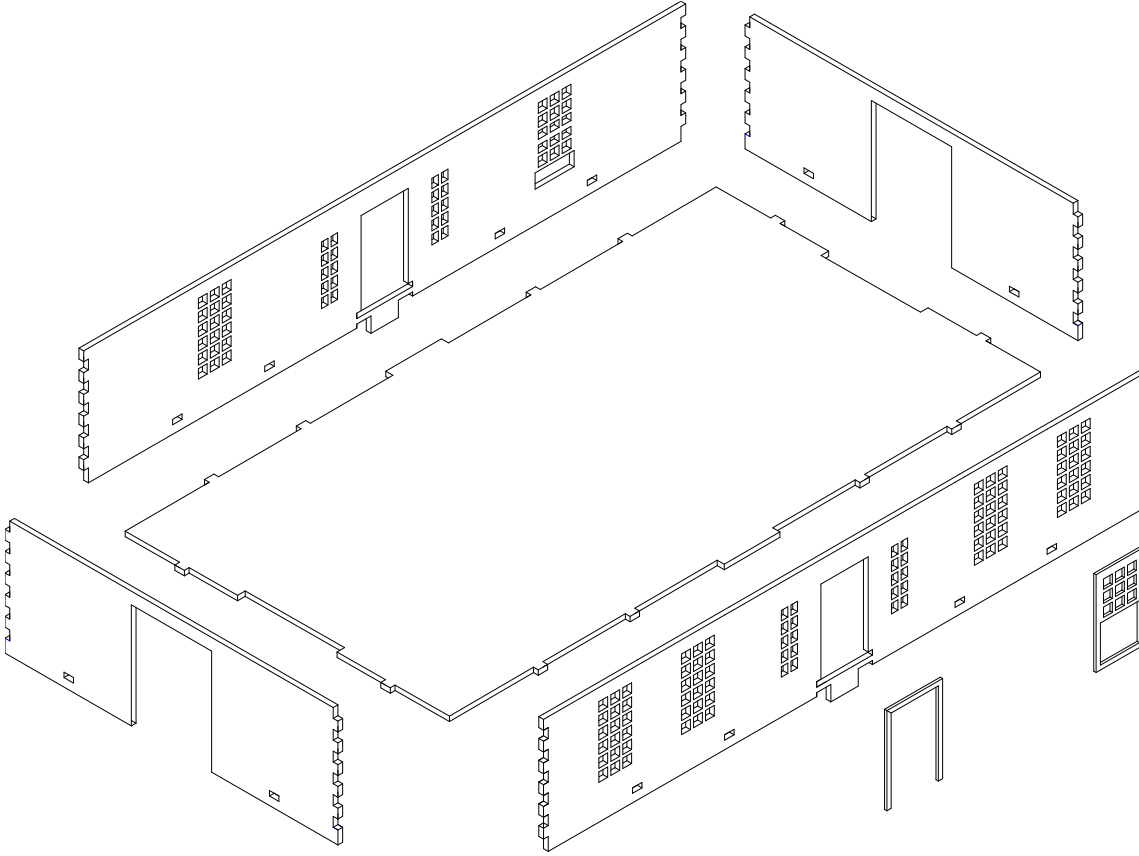
New World Homestead

Instructions

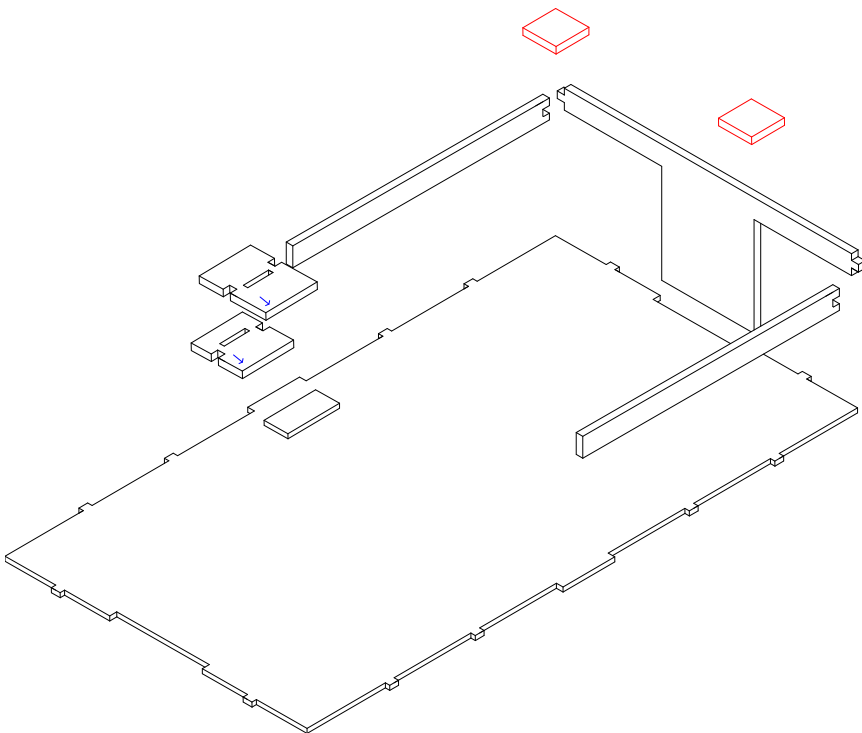
Always “dry run” parts before gluing with a woodwork quality PVA.

Sort the 2mm finger jointed walls into upper and lower storeys as each level is of a different height.

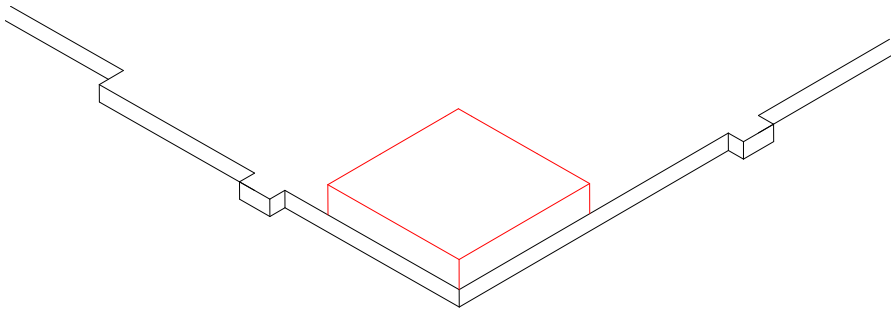
Start with the ground floor and place the MDF on a flat surface.



Glue the 4 x 2mm walls to the base and set aside to dry. When dry cut the card windows from the card sheet and glue in place. Turn the ground floor over and place upside-down on your table.

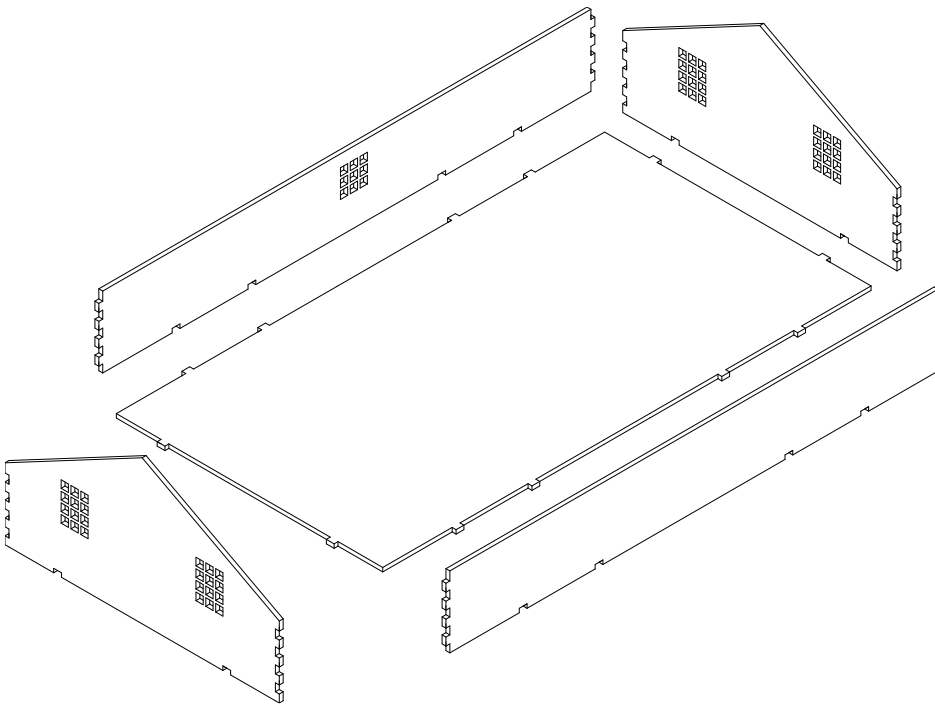


Glue the 3mm T shaped brick engraved (facing out) and slide down the gap at either end. Next place the brick engraved strip in place and align to the long wall edge. The strips have an arrow marked: the arrow should point towards the top of the building. While still wet, glue on the two 3mm steps (smaller first and arrow inwards as indicated). Pack with the 2mm rectangle to get a secure fix.

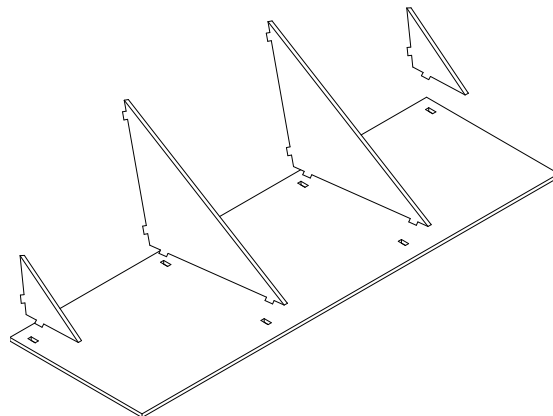
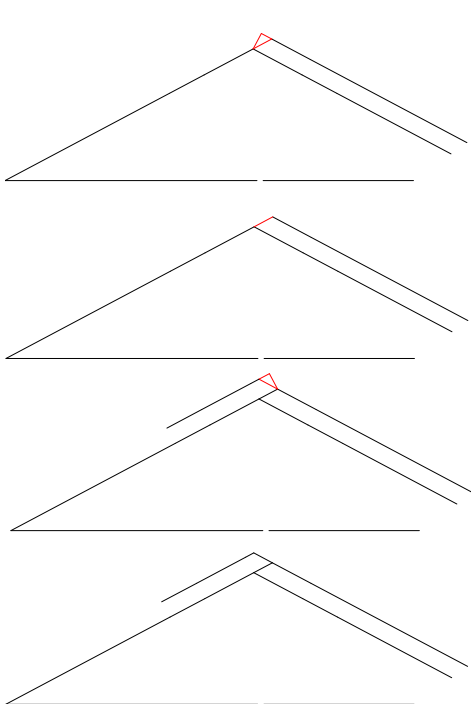


While the ground floor is upside down, glue on 4 x 3mm corner blocks making sure they are bonded to the floor NOT the walls.

Turn the right way up and glue on the 2 x card door surrounds.



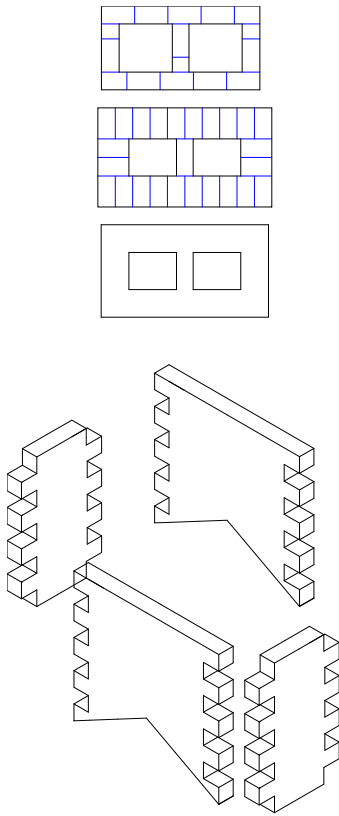
The upper floor is a simple construction, the window should face the rear of the property and is deliberately off-centre.



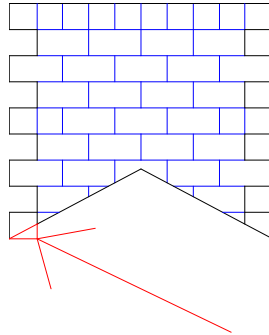
Using an emery board or sandpaper (glasspaper) remove a little of the roof along the top edge so it lies flush with the incline of the roof triangular supports.

When the top leading edge is sanded, glue on the 4 x triangles and the second upper roof piece. Once dry remove the excess MDF with an emery board or sandpaper.

You need not be too fussy regarding the sanding as the apex seam will be covered with card. Sanding however will ensure a better finish.



Glue the 4 x chimney 3mm pieces together to make a stack and BEFORE gluing on the top 3 2mm layers (in sequence starting with the plain one) trim off the internal excess MDF with a sharp craft knife.



Offer up to the roof to ensure that the chimney stack lies flush before gluing in place.

When both chimneys are glued in place, offer up and mark the card strip to cover the apex of the roof. Trim to fit with a craft knife and cut the remaining piece of card in half giving 2 short section of V card.

Glue the small strips to either end of the roof and trim to fit when dry.

It is recommended that you fill any tags prior to painting using emulsion or acrylic paint over a spray primer. Please view the detailed pictures on the website for further guidance.

Thank you for buying this model from:

Charlie Foxtrot Models

www.charliefoxtrotmodels.com