

Georgian House

Instructions

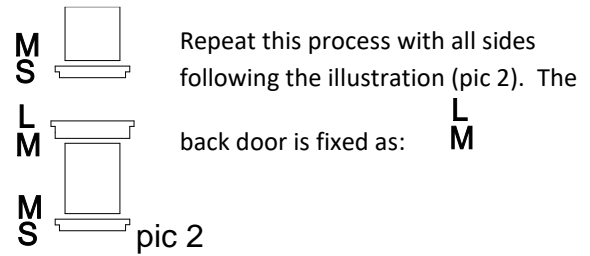
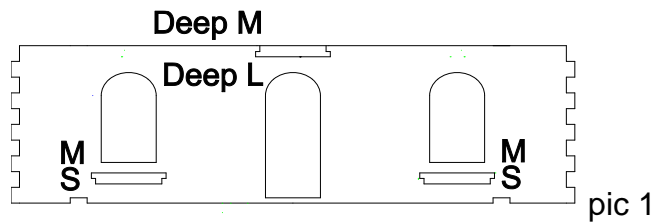
Always “dry run” parts before gluing with a woodwork quality PVA.

Sort the walls into 3 levels as each level is of a different ceiling height.

Sort the window sills into separate piles: small, medium and large. (SML). You will have some odd, larger deeper sizes that will fit the doors and protrude further from the brick work.

Start with the front ground floor and place the MDF on a flat surface.

Glue in the window architecture (pic 1)



Glue the appropriate window frame to the brickwork, keeping within the engraved guidance lines.

Glue in the windows ensuring they fall flush with the inside of the walls.

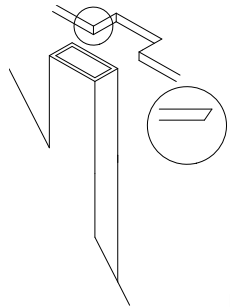
Glue in the window above the front door. When dry, glue in both doors.

Select 4 corresponding same size walls and glue to the base, ensuring that glue is applied to the corner joints sparingly. The footprint is not square so both doors need to be opposite each other.

Repeat this process for the other two floors and set aside to dry.

Assemble the chimney brickwork on both apex ends.

Once the chimneys are dry, place the roof on the gable end so the tab and hole fit together. ***Note** the roof may need some trimming with a craft knife to taper into the chimney at the top. (pic 3)



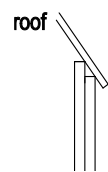
pic 3

Glue the large 2 holed chimney cap to the chimney brickwork then glue the smaller on top of this to create a stepped effect.

File the plastic pipe end square. Then using a razor saw, cut off approximately 15mm and glue pipe into the chimney hole. Repeat until all chimney pots are in place.

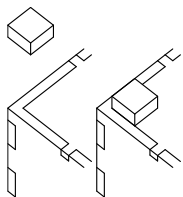
Working from the ground floor up, glue the cornerstones to cover the finger joints.

***Note** on the top floor the cornerstones are deliberately short. This is to allow the roof to fit tightly. (pic 4)



pic 4

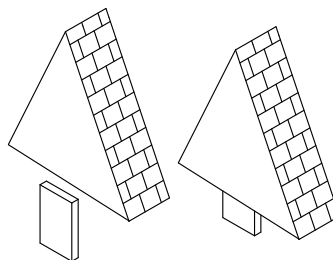
Cut the plastic angle piece into approximately 10mm lengths and glue to the apex ridge of the roof.



pic 5

Turn upper storey floors over and glue on corner blocks. Take care to only glue to the 2mm floor leaving the walls free.

(pic 5)



Pic 6

Glue blocks to inside of both gables leaving 5–10 mm protruding.

(pic 6)