

DOCUMENT STORAGE CRATE

Product Overview

A Plus Plastics range of relocation crates are specifically designed to provide a solution for secure document storage applications required in commercial and domestic relocation. Alternative uses for them include general storage and the delivery of important goods or documents.

Complementing our range of relocation crates is our Crate Skate specifically designed to provide ease of transport. A key feature of our skates is the sturdy construction allowing more crates to be loaded, thereby minimising the amount of lifting and carrying. Another benefit is the minimising the risk of injury through the workplace or home.

The range of Okka Relocation Crates have been designed to be more efficient through the ability to stack and nest, thereby transporting multiple crates at the same time whether they are empty or full.



68L & 34L SECURITY CRATE

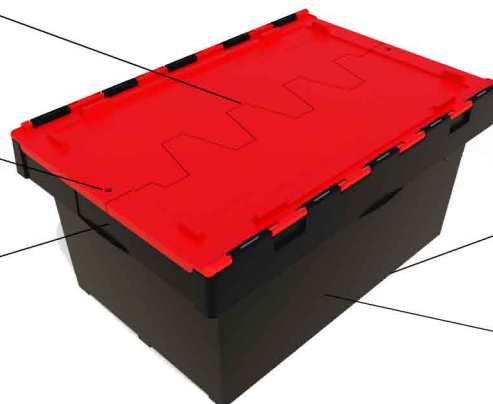
✓	Tamper proof with a cable tie, long shackled padlock or security tags
✓	Lid material: Industrial strength – made from heavy duty, durable PP material – Red or Black
✓	Base Material: Industrial strength – made from heavy duty, durable recycled PP material – black
✓	Nestable when empty for better storage when not in use
✓	Can be multi stacked high for ease of storage and transportation
✓	Suspension file rails are made to suit Australian Standards

FEATURES AND BENEFITS

Interlocking Lid
With the lids ability to interlock, they prevent dust and other particulates from getting in over time

Lockable Lid
Holes to put a security tag through

Comfortable Handles
Ergonomically designed Handles for maximum grip and comfort



Polypropylene
Both Lid and Base made of commercial grade PP

Flat Bottom
The smooth bottom makes it ideal for roller conveyors

Tapered Sides
Allows multiple crates to be stacked when empty

For More Information Visit www.aplusplastics.com.au



DOCUMENT STORAGE CRATE

TECHNICAL SPECIFICATIONS



68L SECURITY CRATE : AP68

✓	Specifications: L 671mm x W 450mm x H 315mm
✓	Weight: 4000 gms
✓	Capacity 68L



34L SECURITY CRATE : AP34

✓	Specifications: L 478mm x W 337mm x H 320mm
✓	Weight: 2265 gms
✓	Capacity 34L
✓	Stacks compatibility with AP68 – two AP34 stack on top of AP68 crate

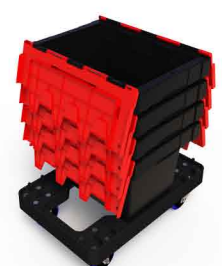
NEST & STACK

Both the 68L & 34L, either nest or stack on top of each other comfortably as shown below, they sit on top of the OKKA Skate for easy transport.

AP68



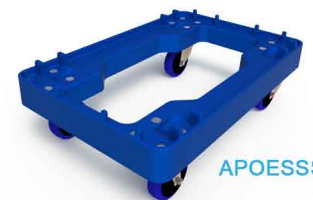
AP34



ACCESSORIES : SKATE



APOES



APOESSB

SKATE

✓	Specifications: L 615mm x W 405mm x H 190mm
✓	Weight: 6050 gms
✓	Stackable for secure storage (when not in use) through reservoirs for the wheels
✓	Skate has a load rating of 600 kgs (150 kg per castor)

For More Information Visit www.aplusplastics.com.au



DOCUMENT STORAGE CRATE

Plastic Crates VS Cardboard Boxes

Durable & Crushproof

Crates

✓	Constructed from 100% recyclable high density polypropylene
✓	Double wall design, additional strength under a load and protects the corners of the Crate
✓	Specialised rib system incorporated into the design of the interlocking lid, ensuring weight is evenly distributed

Boxes

✗	Under heavier boxes, they are not very strong
✗	Can be easily damaged and crushed

User Friendly

Crates

✓	Crates can come with optional hang rails for hanging files to be easily transferred
✓	They are lightweight and easy to handle
✓	Quicker and easier to pack and move
✓	Are compatible with standard, legal, specialty and hanging files, as well as lever arch files and books
✓	Can be sealed for added security
✓	Less likely for the spillage of items within the Crates

Boxes

✗	They are heavy and awkward to move once packed
✗	Do not facilitate hanging files
✗	Require assembly
✗	Little or no security if sealed with tape
✗	If not assembled correctly, box can give way and fall apart, damaging items within
✗	Can be easily damaged or pierced

OH&S Friendly

Crates

✓	Designed to reduce the need for lifting
✓	Ergonomically designed handles for easy grip
✓	Rounded edges to reduce risk of injury

Boxes

✗	No lift points
✗	Risk of injury if not correctly picked up
✗	Will disintegrate when wet and can be easily pierced
✗	Boxes take up more room once disassembled and are not easily moved

Suitable Industries

✓	Warehouse
✓	Transport
✓	Removalists
✓	Hire Companies
✓	Corporate Relocation companies (the biggest user of these crates in Australia)
✓	Government Organizations
✓	Police (Evidence boxes)

Document Storage Applications

✓	Financial Institutions
✓	Legal Profession
✓	Insurance companies

For More Information Visit www.aplusplastics.com.au



DOCUMENT STORAGE CRATE

Plastic Crates VS Cardboard Boxes

Fast & Efficient

Crates

✓	Arrive ready to be packed and stacked for relocation meaning no time lost in assembling and therefore minimising the office/company downtime
✓	Crates hold 25% more than a traditional moving box
✓	Easier to get into, to pack and unpack
✓	De-clutters the office environment so that employees return to normal duties and Crates can be removed on the pre-arranged collection date

Boxes

✗	Assembly required and the use of tape to seal the box which can be time consuming
✗	Assembly of boxes can be disruptive to others
✗	They hold less than a Crate
✗	Boxes do not create a sense of urgency in staff in regard to the unpacking and removal

Securable & Numbered

Crates

✓	Individually numbered with a unique six digit identification number
✓	Provides a source of tracking and cross referencing
✓	Can be sealed at each end with numbered Security Seals, which are SCEC (Security Construction Equipment Committee) endorsed
✓	Security Seals provide tamper proof security

Boxes

✗	Boxes are sealed with tape, offering no real security to the items contained within
✗	They have no identification beyond the use of a labeling system; labels are not permanent and can be dislodged in transit, leaving an unidentified box

Environmentally Friendly

Crates

✓	Crates average a 10 year working life
✓	Production of Crates creates less Greenhouse Gas Emissions
✓	Minimise waste and energy levels than the production of boxes
✓	Fully recyclable at the end of their life

Boxes

✗	Cardboard boxes have a very limited life span, an average of 1 to 3 moves
✗	They will either become landfill or be recycled (using more energy and water resources)

Water Resistant

Crates

✓	Manufactured in high density polypropylene, they are splash proof and will protect contents from inclement weather
---	--

Boxes

✗	Prone to collapse or disintegrate if they became wet, ultimately offering little or no protection to the contents of the box
---	--



For More Information Visit www.aplusplastics.com.au

