



AFINIA 3D™

**QD330**

3D Printer

*Super Fast | Easy | Quiet*



The QD330 is well-suited for beginners, individual users, families, and educational institutions. Just one-click printing, without complicated operation procedures. Realize your ideas effortlessly.



Full-auto  
one-click leveling



Maximum speed  
600mm/s



Core XY  
structure



3-second  
quick-swap nozzle



Dual air filtration  
system

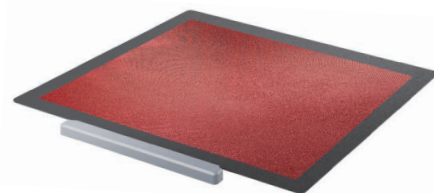
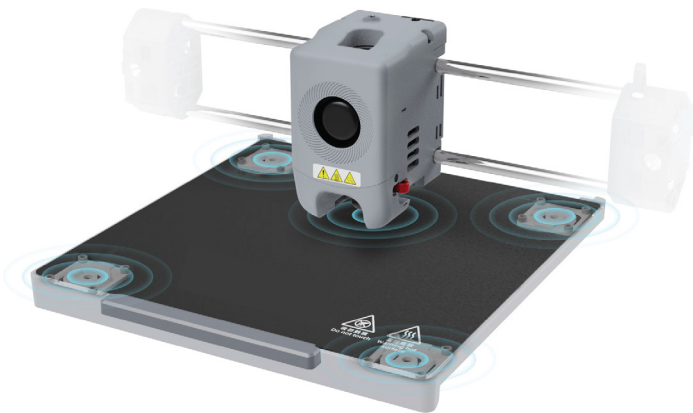


50dB silent  
printing



## Full-auto one-click leveling, flawless first layer

The QD330 has a full-auto one-click leveling system. It measures the distance and then calculates the correct offsets. No tools, no manual Z-axis calibration, while ensuring a perfect first layer.





**10** Minutes

From unboxing to starting to print



## Efficiency and quality combined



**10 minutes**

From unboxing to starting to print



**Printing**

Maximum speed **600mm/s**

Maximum acceleration **20,000mm/s<sup>2</sup>**



**Less waiting time**

Nozzle with a flow of **32mm<sup>3</sup>/s**

**50w** heating power

200° heating up in **35 seconds**

**Astronaut**

104\*118\*200mm (228g)

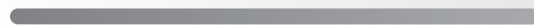
Afinia QD330

**4h10min**

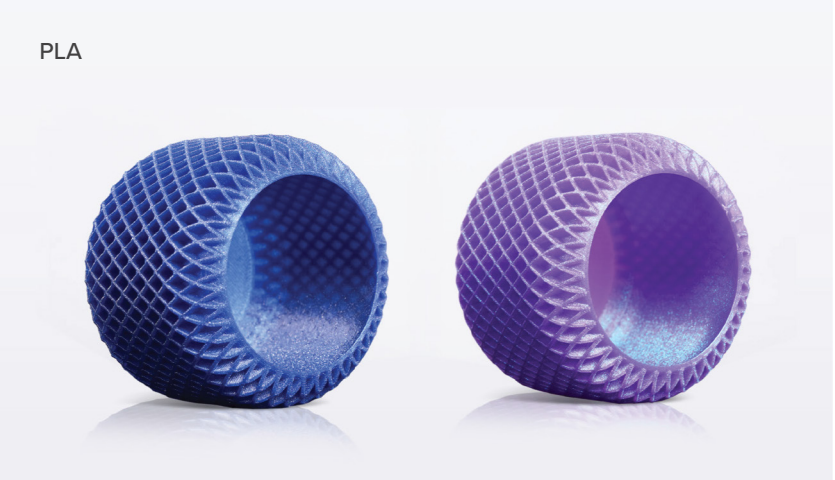
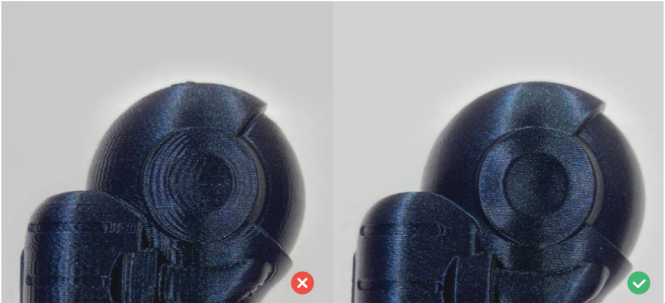
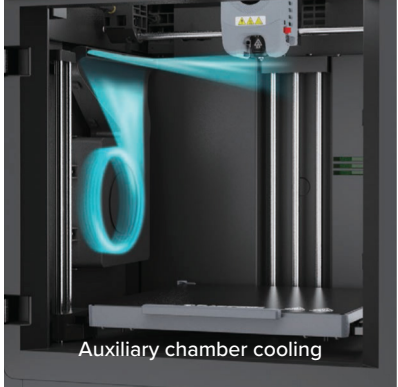


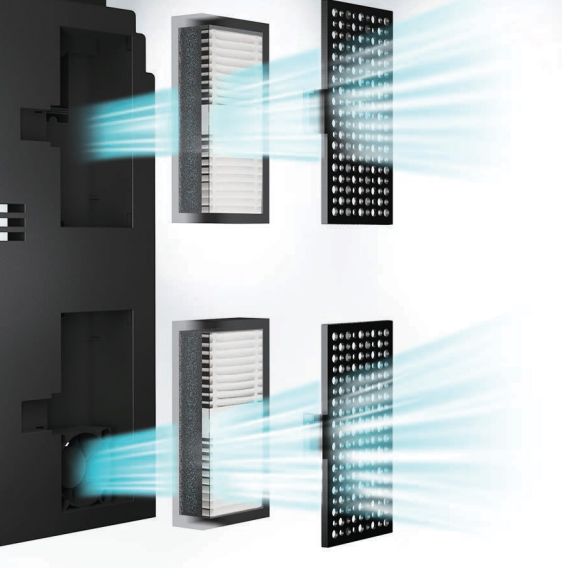
Others

19h20min



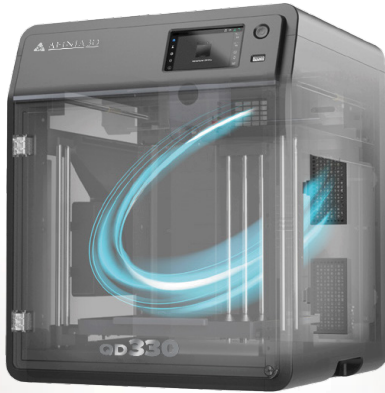
# Robust designs for superior quality





## Eco-friendly printing

The QD330 adopts a dual filtration system of internal and external circulation. Dual-layer filtration: HEPA13 and activated carbon, effectively blocking 99% of particles and VOCs, thus protecting your respiratory system.



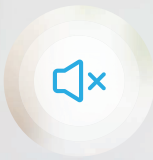
### Internal Circulation Filtration

Continuously filters and circulates the air inside the chamber.  
(Suitable for ABS, etc.)



### External Circulation Filtration

Draws fresh air from the outside into the chamber while the filtered internal air circulates outside the printer  
(Suitable for PLA/PETG, etc.)



**50dB** low-noise printing,  
no disturbance to work  
or study



# Easy-maintenance nozzle for both rookies and experts

Quick-detachable nozzle requires no tools for change in just 3 seconds

Various nozzle diameter (0.25/0.4/0.6/0.8mm) options suitable for both high-precision and high-efficiency mode



Remote Camera Monitoring



Filament Run-out Reminder



Automatic Shutdown



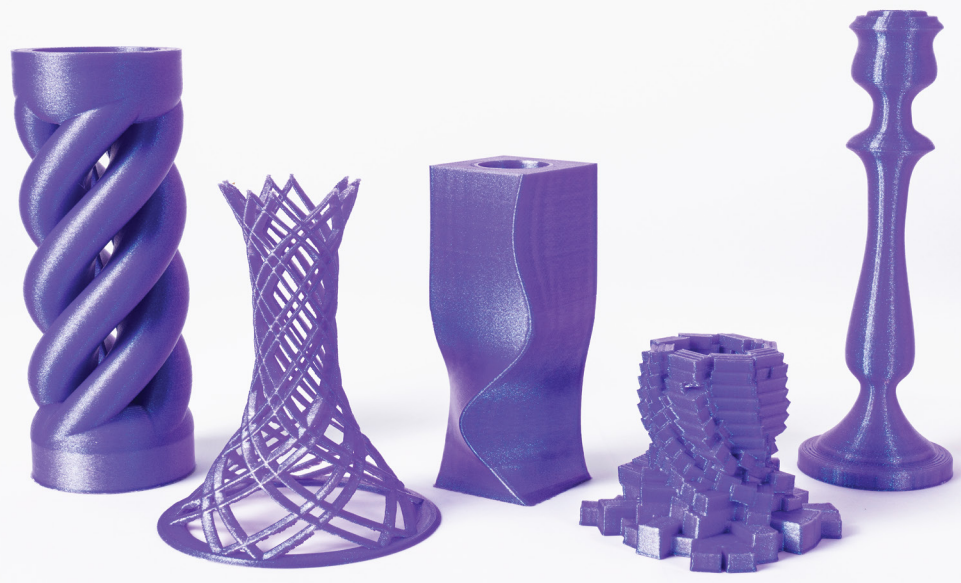
Power Loss Recovery



Double-sided Flexible PEI Steel Plate



Integrated Printing Management



# Parameters

Machine Name	Afinia QD330
Extruder	Direct drive; Qty: 1
Filament	*PLA/*PETG/*TPU (0.4mm nozzle) ABS/ASA PLA-CF/PETG-CF (0.6/0.8mm nozzle)  <small>Note: Materials marked with * are recommended for printing.</small>
Nozzle Diameter	0.4mm/0.6mm/0.8mm/0.25mm
Extruder Temperature	280°
Platform Temperature	110°
Build Volume	220*220*220mm
Speed	Maximum extruder speed: 600mm/s
Acceleration	Maximum acceleration: 20000mm/s <sup>2</sup>
Build Plate	Flexible removable PEI steel plate
Display Screen	4.3-inch
Device Size	380*400*453mm (excluding the spool holder)
Power Supply	AC 100~240V, 50/60Hz, 350W
Compatible Slicing Software	FlashPrint/Prusa Slicer/Cura/Orca Slicer
Air Filtration	Internal + External circulation HEPA13 + activated carbon)
Shell	Enclosed
Noise	Low-noise mode: 50dB; Standard mode: 55dB
Connectivity	Wi-Fi; Ethernet; USB
Other Functions	Camera monitoring; Filament run-out reminder; Automatic shutdown; Power loss recovery



**AFINIA 3D™**



## Afinia 3D

afinia3d.com  
sales@afinia3d.com  
888-215-3966