

Cut & engrave with pinpoint accuracy

# EMB aser



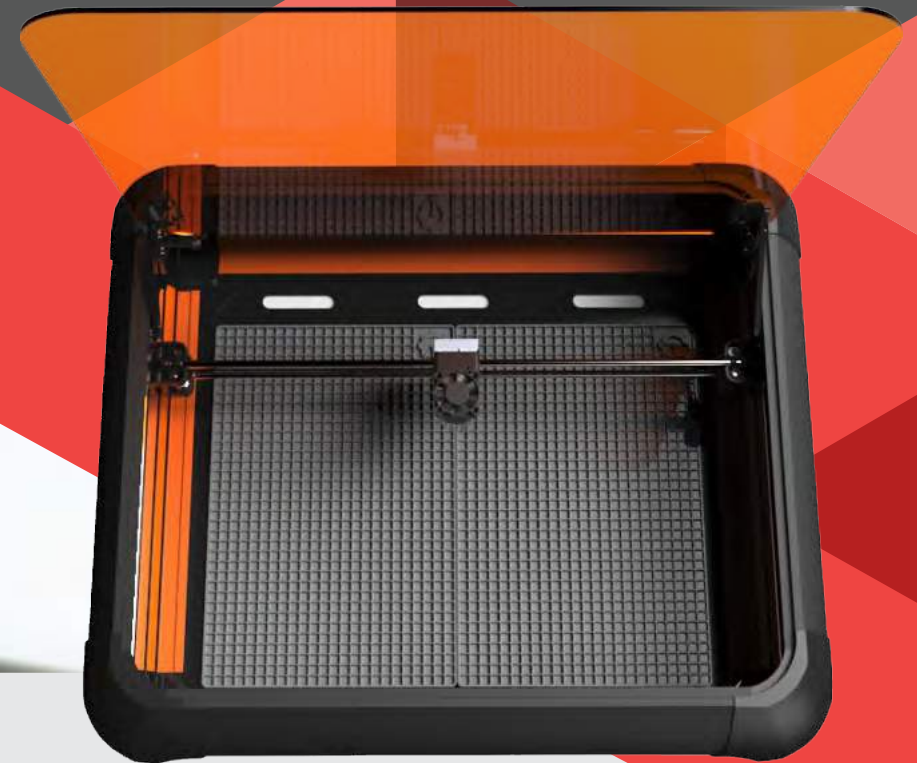
# EMB aser

Wireless Desktop Laser Engraver Cutter

Distributed by  AFINIA 3D

**EMB** *laser* 2

# MAKING GREAT STUFF IS WHAT EMBLASER DOES



**Fast. Precise. Safe.**

Emblaser 2 is designed with your creative process in mind. The combination of camera assisted alignment helps accelerate the transition from digital design to reality. Emblaser 2 works with LightBurn software combined with our intuitive add-ons for a simplified workflow.



**SUPERMAN HAS LASER POWERS,  
SO CAN YOU**

**SMART  
SAFETY  
FEATURES**



Lid  
Interlock



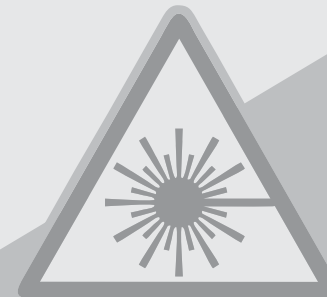
Fire Ignition  
Alarm



Fume  
Filtration

## Designed for the Classroom

Designed specifically for educators looking for a safe, hassle-free laser cutter engraver, that offers exceptional quality and boasts a host of innovative features. From smart, user-friendly software and automatic focusing to camera assisted material placement.



CLASS 1

EMB *laser* 2

# EMBlaser 2 So Many Materials

## Acrylics



The Emblaser 2 can cut most solid colour Acrylics. It can't cut clear or lightly tinted acrylic, but it can cut 3mm Black, Green, Yellow, Red. It can also engrave some tinted acrylics. Due to the frequency of the laser diode, it's light will pass right through clear or lightly tinted materials and will not affect it.

## Wood



This is where the Emblaser 2 shines. It can cut up to 6mm Plywood, MDF, Balsa and many others. Don't forget it also does an excellent job at engraving photos or vectors onto wood.

## Leather



Customise your purse, wallet or bracelet in ultra-fine detail with the Emblaser 2. Cut & engrave Natural leather, Suede leather and many other types of leathers.

## Fabrics



Cut and engrave amazing intricate, elegant, classic patterns and it even seals fabric edges to prevent fraying. This method of design is very popular in the fashion industry.

## Paper



With the Emblaser 2 you can create an unlimited range of elaborate greeting cards, packaging, personalised engravings and delicate laser-cut patterns.

## Cardboard



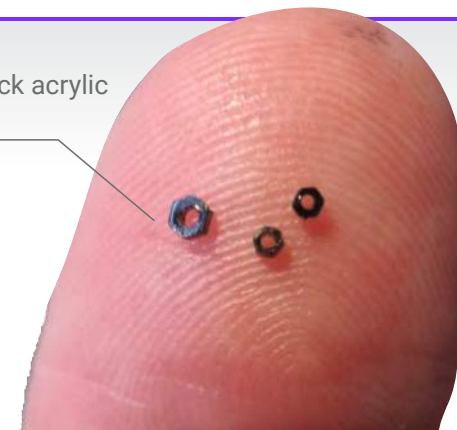
Using 123Make you can import from thousands of 3D STL files and slice them to make the virtual world physical.

## Power of Lasers & Prisms

5 watts is that all I hear you say? Well the smart chaps over at Darkly Labs managed to squeeze out all the energy, focusing it through precise optics to get all the energy focused to as thin as the head of a needle.



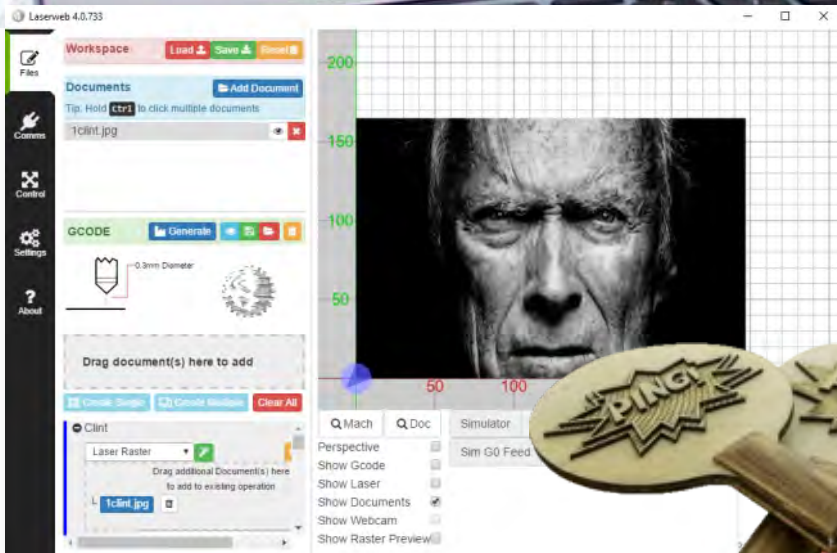
3mm black acrylic laser cut



Use the software  
you know & love



Logos are owned by their respective companies.



## Why choose Emblaser 2 over CO2?

- The Emblaser 2 is about 1/5th the cost of a Co2 systems.
- Emblaser 2 doesn't use mirrors, so no alignment requirement.
- Can do photographs with higher definition compared to CO2.
- Simple servicing, no need to return to base for replacing laser unit.
- Emblaser 2 is air cooled. No messy buckets of water and fish pumps needed.
- No complex manual focusing and laser height is software controlled

## What's in the package:

Emblaser 2 wireless desktop laser cutter engraver  
Clean cut air assist  
4 x cutting mats  
Extraction hose  
LightBurn Software - Windows & Mac  
Lens cleaning kit  
120-220v - 12vDC Power Supply  
USB Cable  
Fire Blanket  
1 Year Limited Warranty  
Online & Phone Customer Support

## Optional

Indoor filtration unit  
Spare filter



## Specifications

Engraving has never been so easy!



Build Volume	500 x 300 mm with 50mm software control laser height
3D Cutting	Yes
Classification	Class 1 - the safest laser device rating available
Camera assisted material alignment	Yes
Laser unit	5 watt Laser Diode with beam reshaping
Clean-cut air assist	Yes - installed
Fire ignition alert	Yes
Fume extraction	Yes - exhaust hose enclosed (Fume Filtration optional)
Focus	Factory calibrated
Connectivity	Wi-Fi 2.4G & USB 2.0
Indoor fume filtration unit	Yes - optional
Workspace lighting	Yes
Software	Windows & Mac
Warranty	12 month & 6 month on Laser Diode



LEARN MORE AT  
AFINIA.COM

or contact your local reseller

U.S.A.: 888.215.3966  
JAPAN: 03-3561-2266  
EMAIL: sales@afinia.com

