

VB VC VH VK VL DOOR LOOM FOR POWER WINDOWS + CENTRAL LOCKING

by HOLDCOM AUTO PARTS

www.holdcom.com.au

INSTALL TIPS

v2.0 (19/8/2024)

COMPATIBILITY:

VL CALAIS – PLUG N PLAY

VL MODELS WITH FACTORY “POWER” BODY LOOM – PLUG N PLAY

VL WITHOUT “POWER” BODY LOOM – CUSTOM WIRING REQUIRED

VB TO VK – CUSTOM WIRING REQUIRED

(We highly recommend getting any custom wiring done by a qualified auto electrician)

The loom comes with a universal patch lead for vehicles that are not plug n play compatible.

RED = Switched 12V Power (Must use a 25A circuit breaker in-line)
BLACK = Ground



This small loom is only used in-place of the rear window childlock switch, if you do not have one or wish to use one.

DOOR / BODY HOLE SPECIFICATIONS:

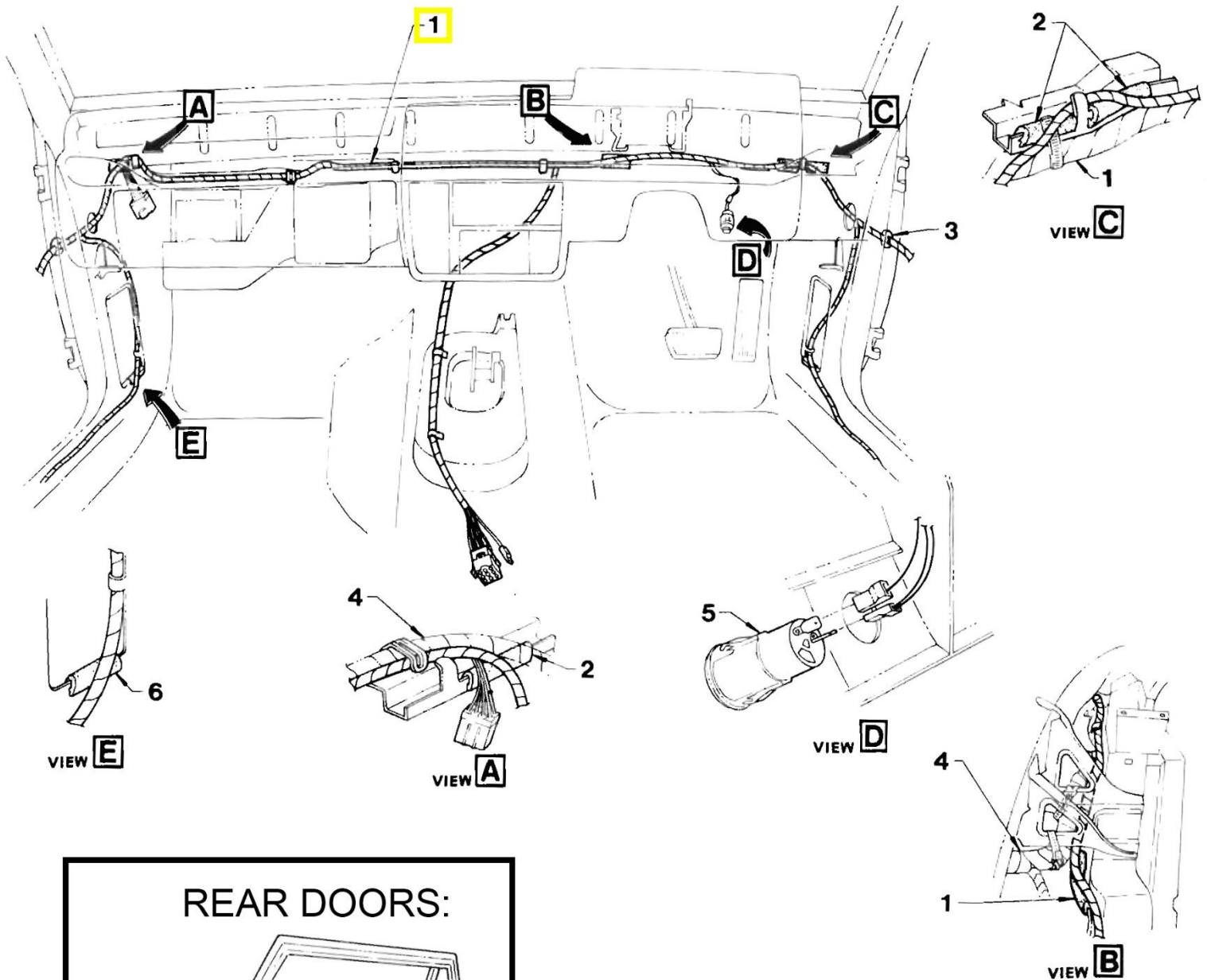
You will need to drill 22mm holes in the doors and body if they aren't already there.

From factory there are dimples in the correct locations like below:

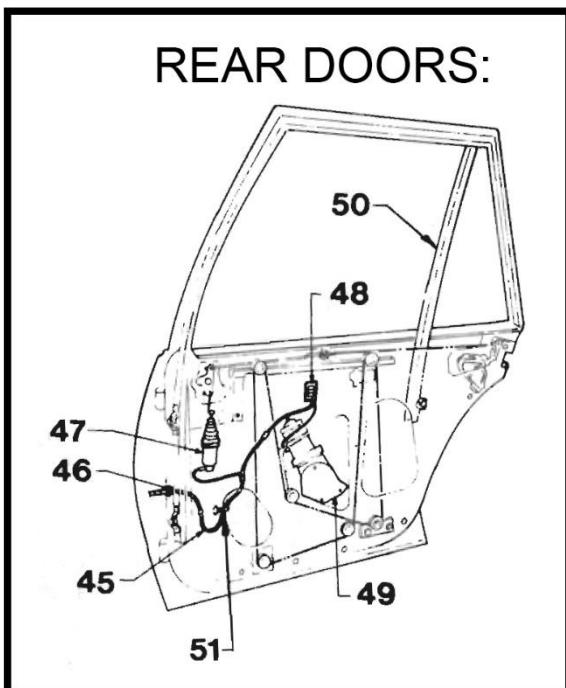


WHERE TO RUN THE LOOM:

Follow the factory location to run the loom



REAR DOORS:



REF. NO.	PART NAME	GROUP
1	HARNESS ASM. - Electric door lock	10.485
2	SLEEVE - Harness protector	10.485
3	GROMMET - Electric door lock harness	10.485
4	HARNESS ASM. - Main wiring & body	2.480
5	SWITCH ASM. - Rear window override	10.777
6	SLEEVE - Harness protector, Cowl side panel....	10.485
45	HARNESS ASM. - Electric door locks	10.485
46	GROMMET - Electric door lock harness to door	10.485
47	ACTUATOR KIT - Electric door lock	10.485
48	SWITCH ASM. - Rear door power operated window.....	10.777
49	REGULATOR, CABLE & PULLEY ASM. - Rear door power window	10.791
50	CHANNEL ASM. - Glass run, Centre	10.759
51	STRAP - Harness to door panel	10.485

REAR SWITCH CONNECTIONS:

LEFT HAND:

- 1 – Purple
- 2 – Black from motor
- 3 – Blue from motor
- 4 – Pink
- 5 – Dark Green

RIGHT HAND:

- 1 – Purple / White
- 2 – Black from motor
- 3 – Blue from motor
- 4 – Pink
- 5 – Light Green



**CUT OUT
GOES AT BOTTOM**

CENTRAL LOCKING:

This loom is designed to work with either original or aftermarket central door locking actuators – BUT an aftermarket control module must be used.

The black 2 pin plug is used to send the lock and unlock signals to the actuators.

