

Factory Style Fuse Rail for VK to VS Commodores

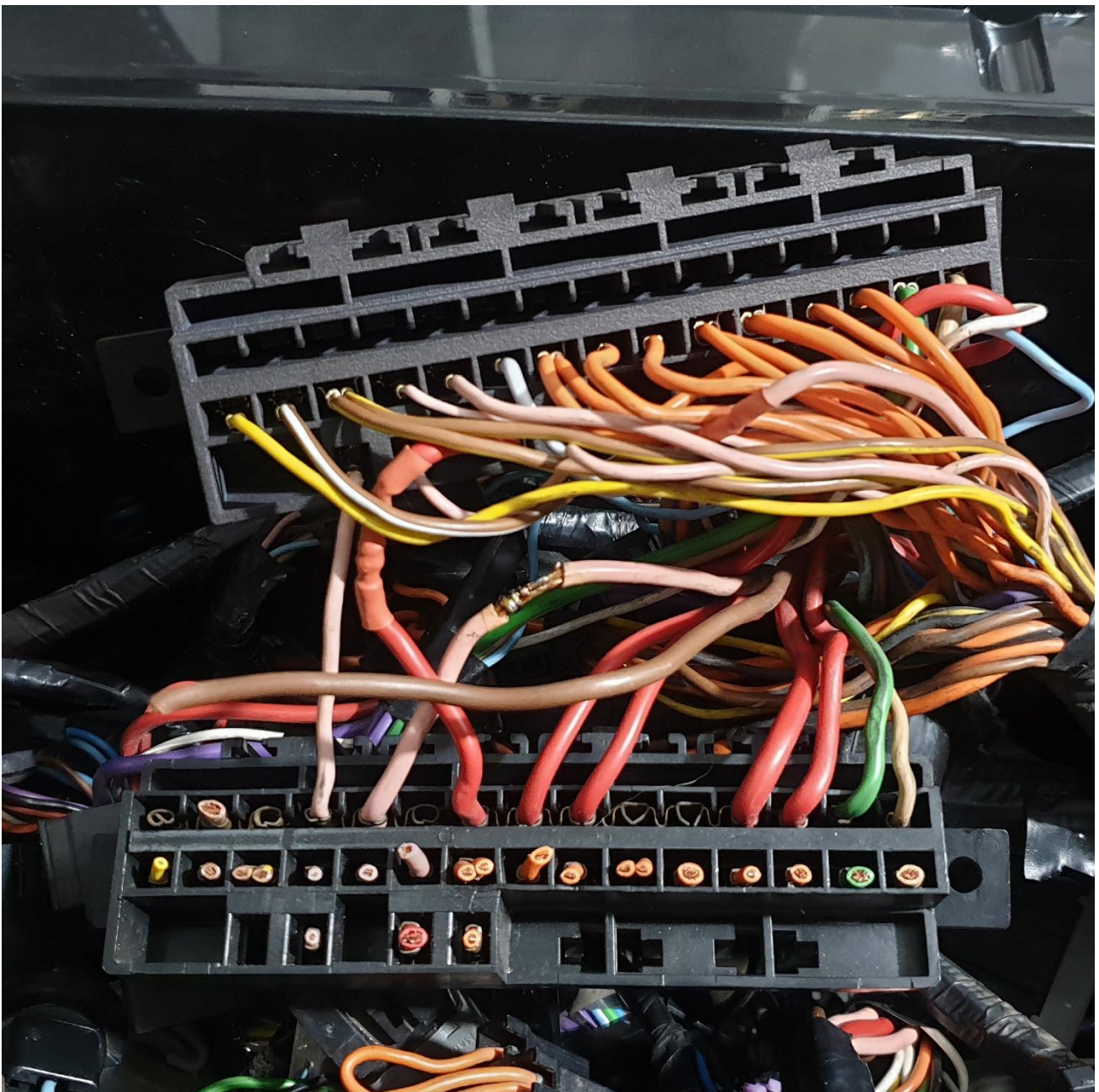
by HOLDCOM AUTO PARTS

www.holdcom.com.au

INSTALLATION TIPS

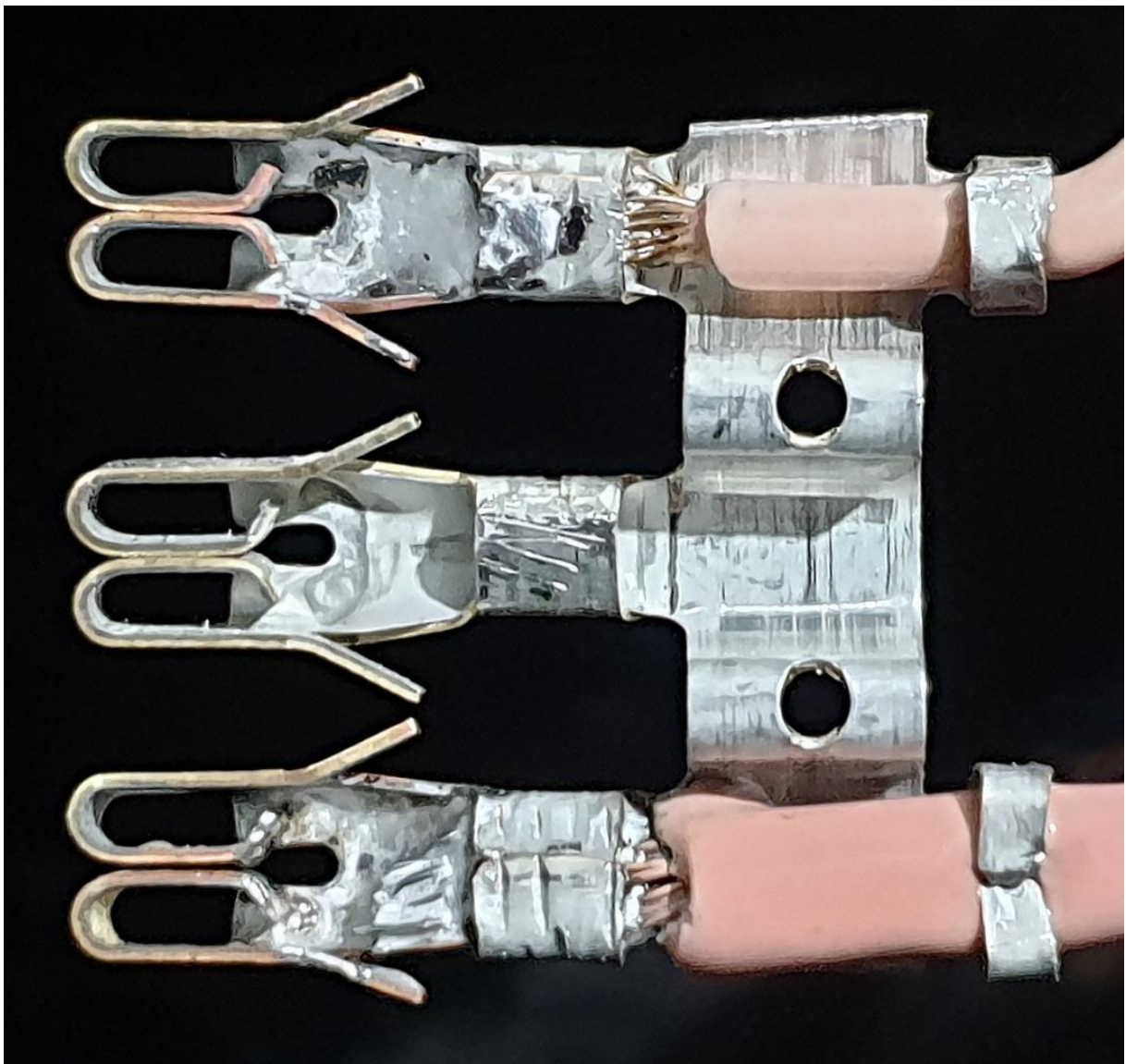
(Specific to VL models. Other models wiring will vary slightly.)

1. Starting on the 'circuit out' side, (Single circuits, furthest from where relays are mounted) replace each circuit, one at a time. Most will require a single small terminal, but a few do require a single large terminal. Simply cut one off the strip with tin snips or wire cutters, as required. We highly recommend that each terminal be crimped then soldered, for the best long-term results.

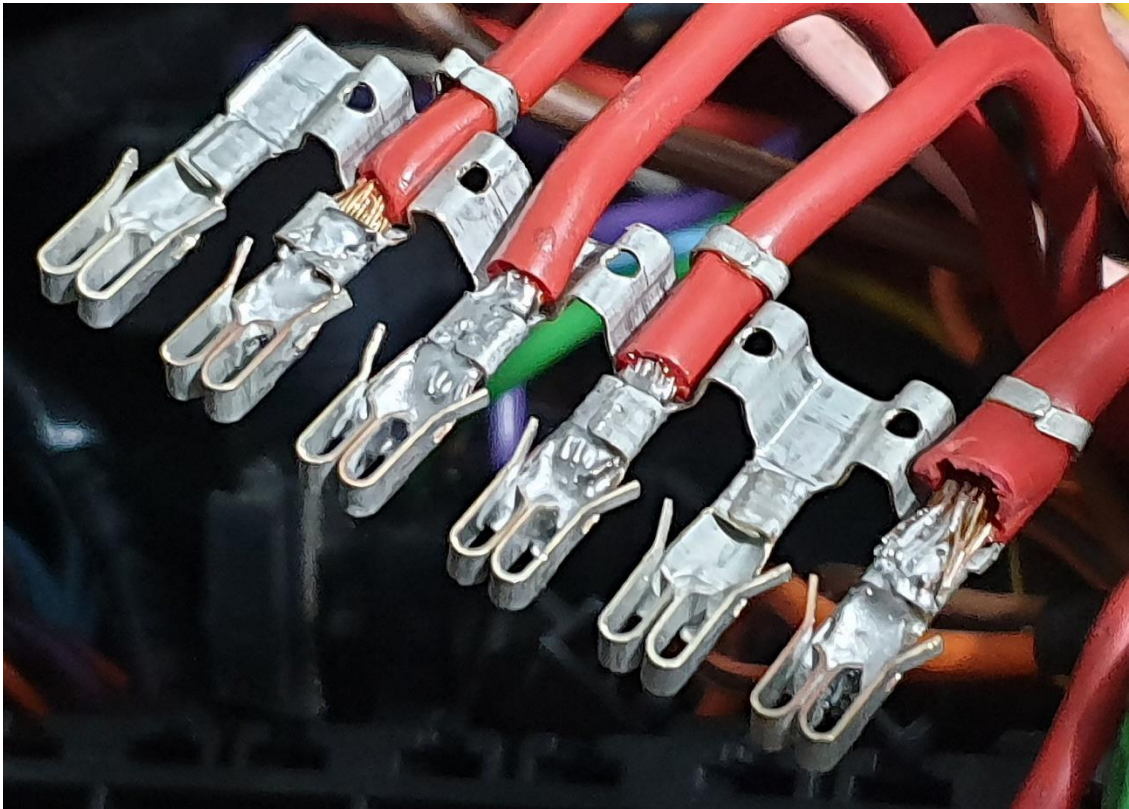


2. On the 'circuit in' side, (where the circuits are 'bussed', meaning joined together) these terminals *must* be soldered! Most circuits use the large terminals joined together, but there is also a few single circuit.
3. On VL Commodore models, there is:
 - 2 x Bussed/joined circuits with 3 terminals
 - 1 x Bussed/joined circuit with 6 terminals
 - 3 x Single terminal circuits
4. To crimp the 'bussed' terminals to the wires, use needle nose pliers to bend them similar to shown. All tabs must be bent down, otherwise they will stop the terminal from clipping into the fuse rail.

3-terminal 'bussed' circuit:



5. The 6 terminal 'bussed' circuit is the same, as shown below.



6. Screw rail down, fit fuses and relays and the job is completed.

