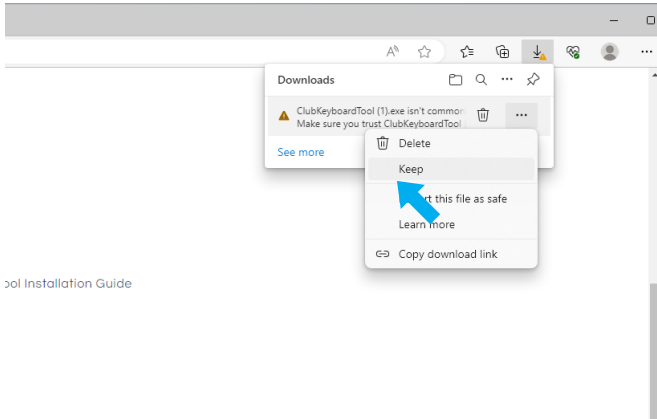


## Programming Tool Installation Guide

Only needed if switching between TGC and GS Pro (or others)

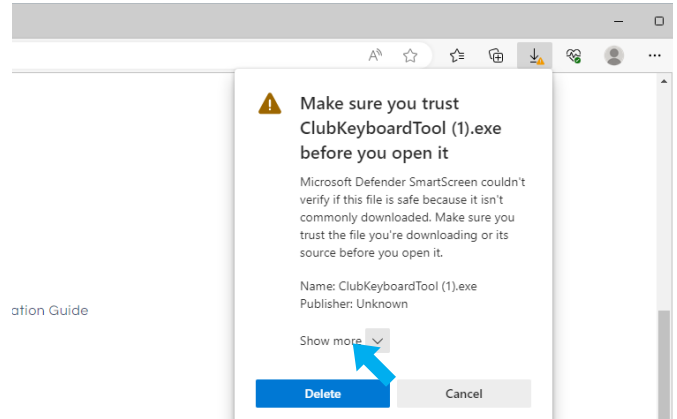
### Step 1

Click to download the Software at ClubKeyboard.com. When the warning message appears, select the 3 dot menu drop down and then choose to "Keep" the file.



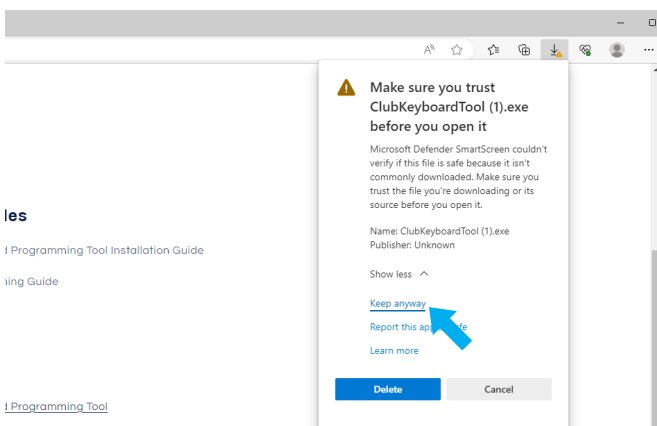
### Step 2

Select "Show More"



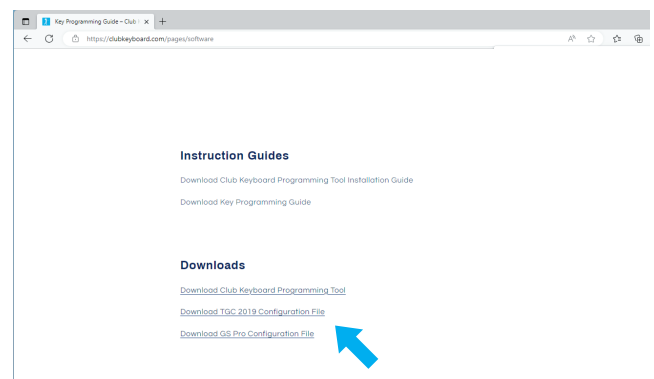
### Step 3

Select "Keep Anyway"



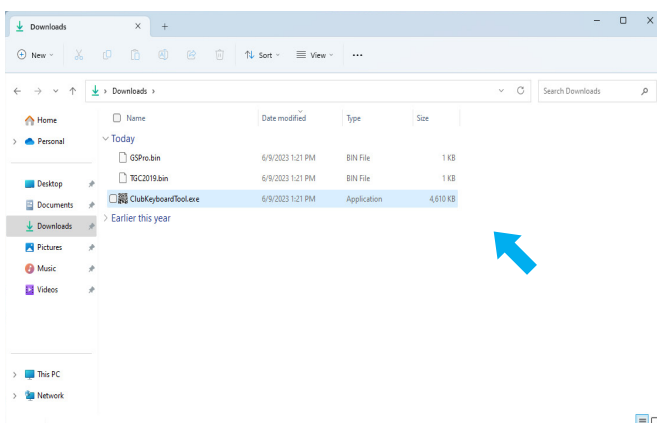
### Step 4

Download any standard configuration files you want to use.



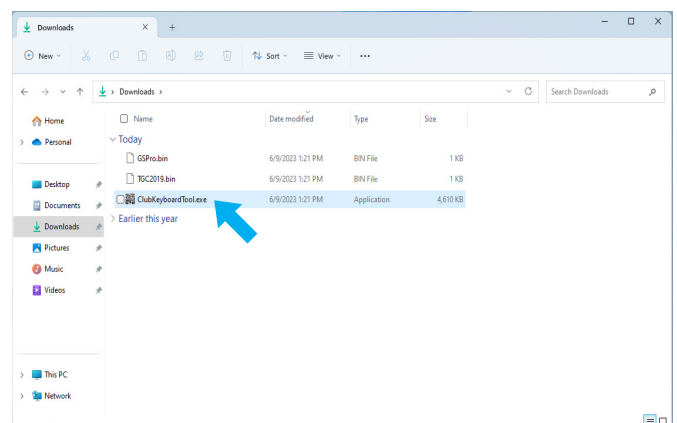
### Step 5

Go to your downloads folder and locate the files you just downloaded. You can move them to another folder on your computer if you want to.



### Step 6

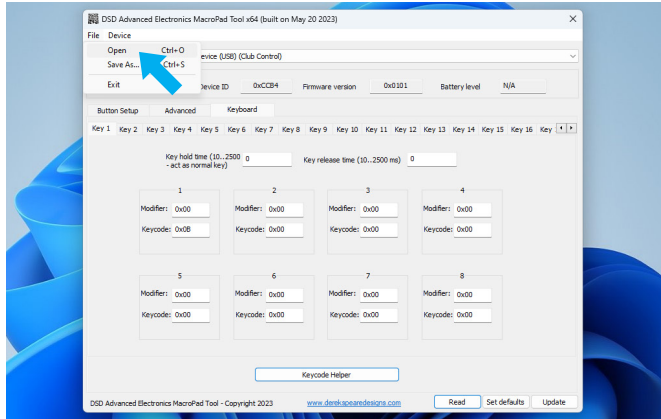
Double click on the ClubKeyboardTool to launch the software.



## Switching the keyboard from TGC to GS Pro (or others)

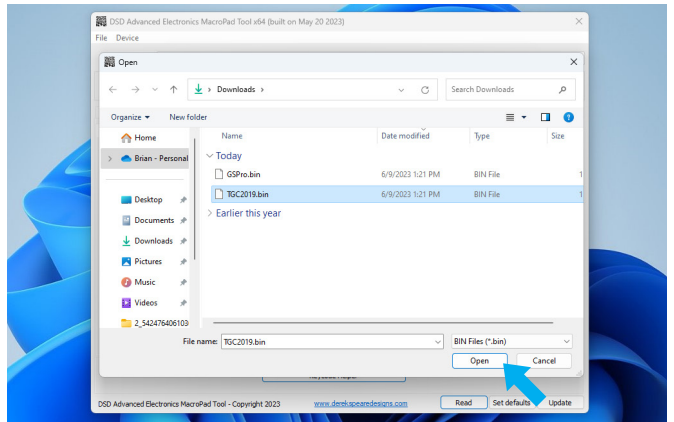
### Step 1

Select "file" then "Open"



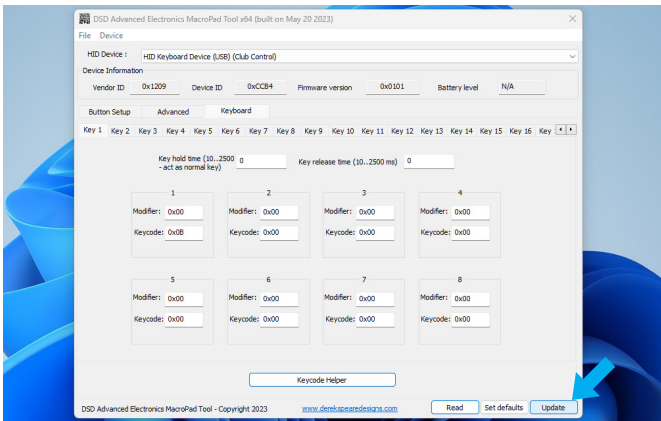
### Step 2

Select the configuration file that you want to use, then click "Open". Usually GSPro.bin or TGC2019.bin. These are the files you downloaded previously.



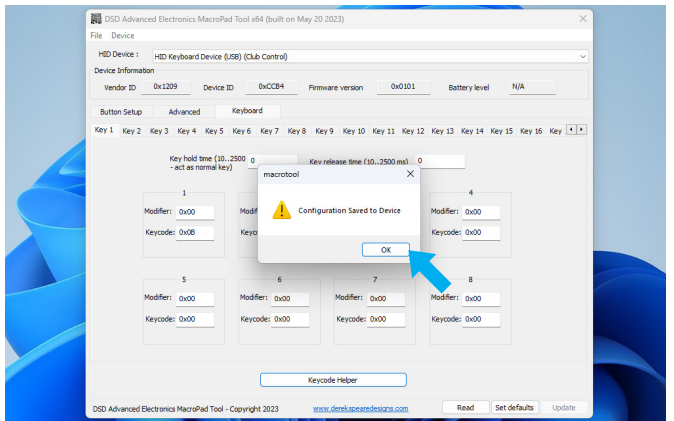
### Step 3

Now click on the "Update" button.



### Step 4

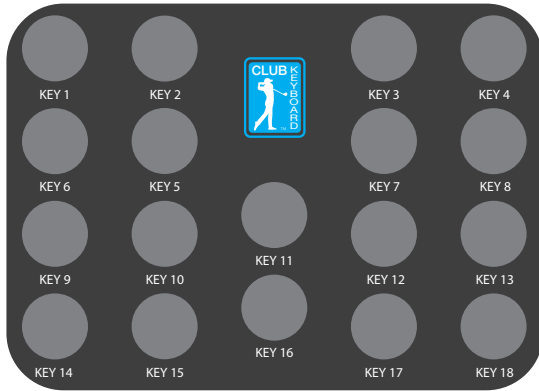
Your keyboard is now reconfigured and ready to use!  
 Select "OK".



## Customize the key assignments and create your own configuration files

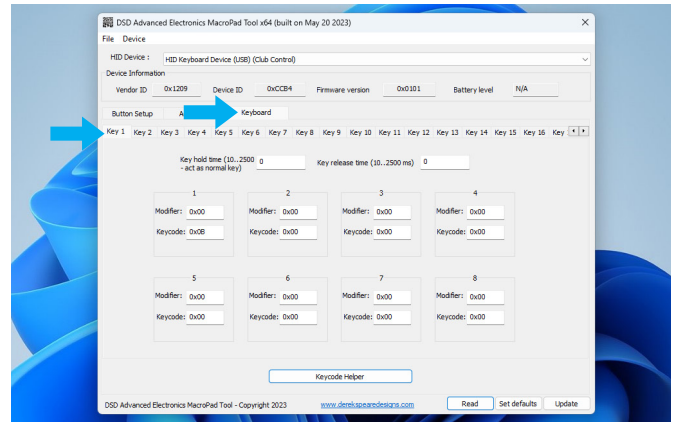
### Step 1

When configuring the keys, the key numbers are shown below.



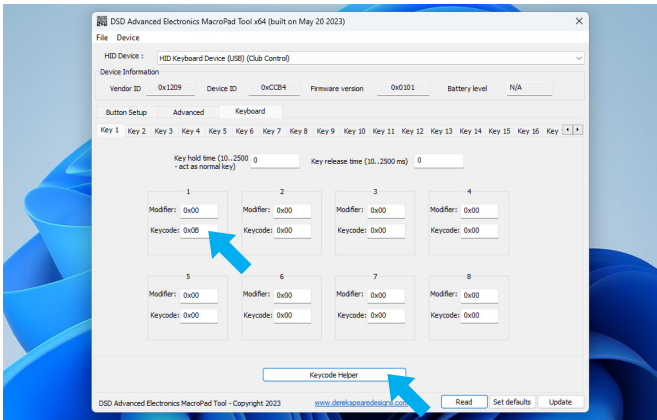
### Step 2

Select the keyboard tab and then select the subtab with the key number you want to re-assign.



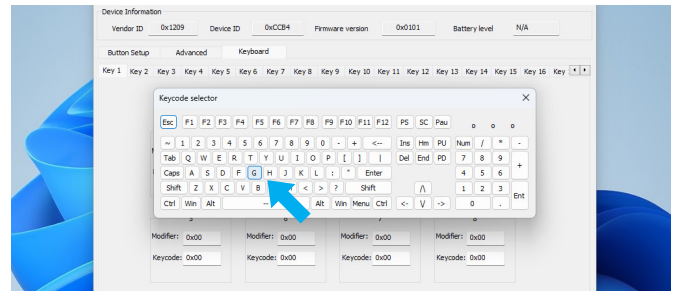
### Step 3

Put your cursor in the keycode box for the first key marked "1". Then select the Keycode Helper to show the keyboard.



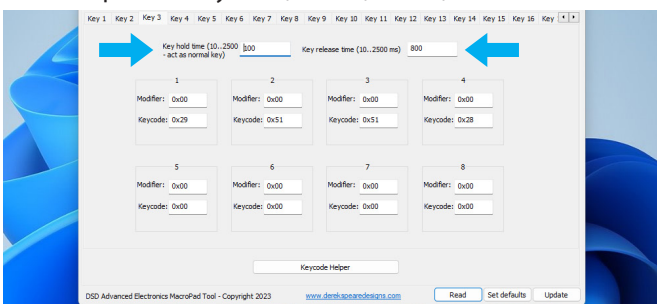
### Step 4

Select the keyboard key you want to assign to this key. The keyboard will disappear and the ascii keycode will be displayed in the box. **Note:** it will display the key code in the box, not the actual key, you can press the keyboard helper button again to see the key assigned if you want to check the current assignment.



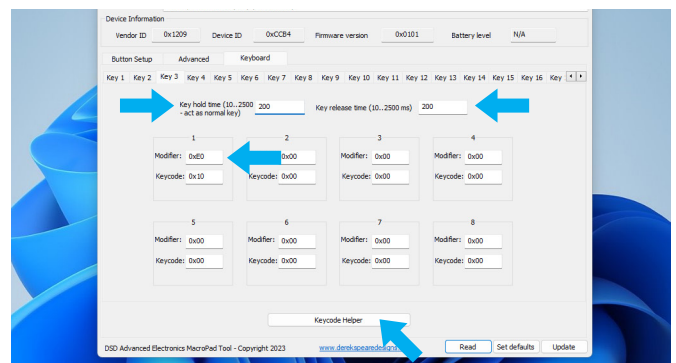
### Step 5

You can assign up to 8 keys to each button. For TGC 2019 menu items, or others, needing a delay after each key press, put 100 in key hold time and 800 in the key release time which will send key strokes one at a time with a slight delay, similar to actually pressing the separate keys. This is an example of 4 keys ESC, Down, Down, Enter.



### Step 6

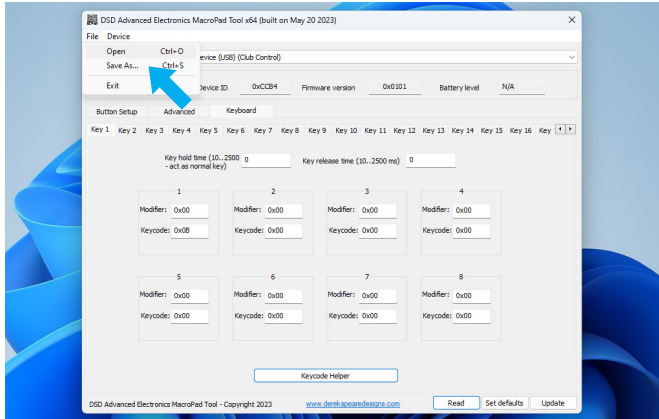
If you need a modifier, such as the shift key or control key, add the to the modifier box, using the keyboard helper. Change the key hold time and release time to 200 which allows the keys to be held briefly together.



## Customize the key assignments and create your own configuration files

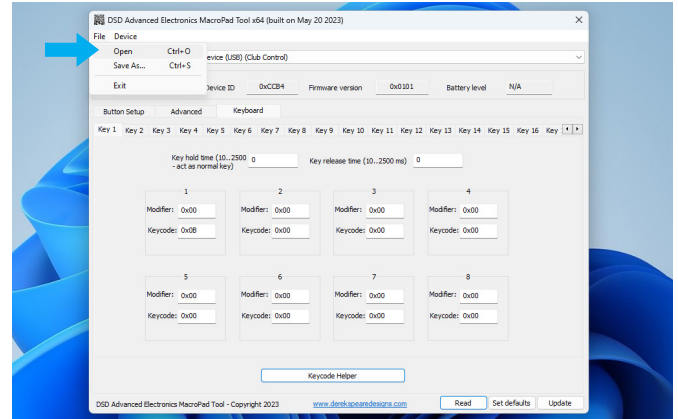
### Step 7

Once you have assigned all of the keys you want to program, you can save your configuration to a file.



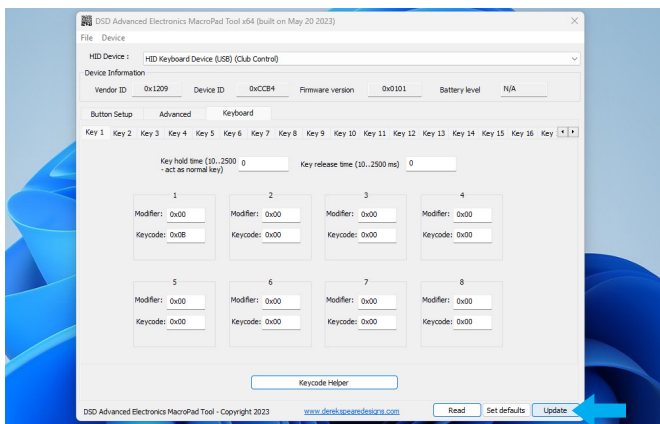
### Step 8

You can load your configuration files using the open menu item.



### Step 9

Send your configuration to the board by clicking the update button.



### Step 10

Once the configuration file has been updated successfully you will see the message below. Its ready to use.

