



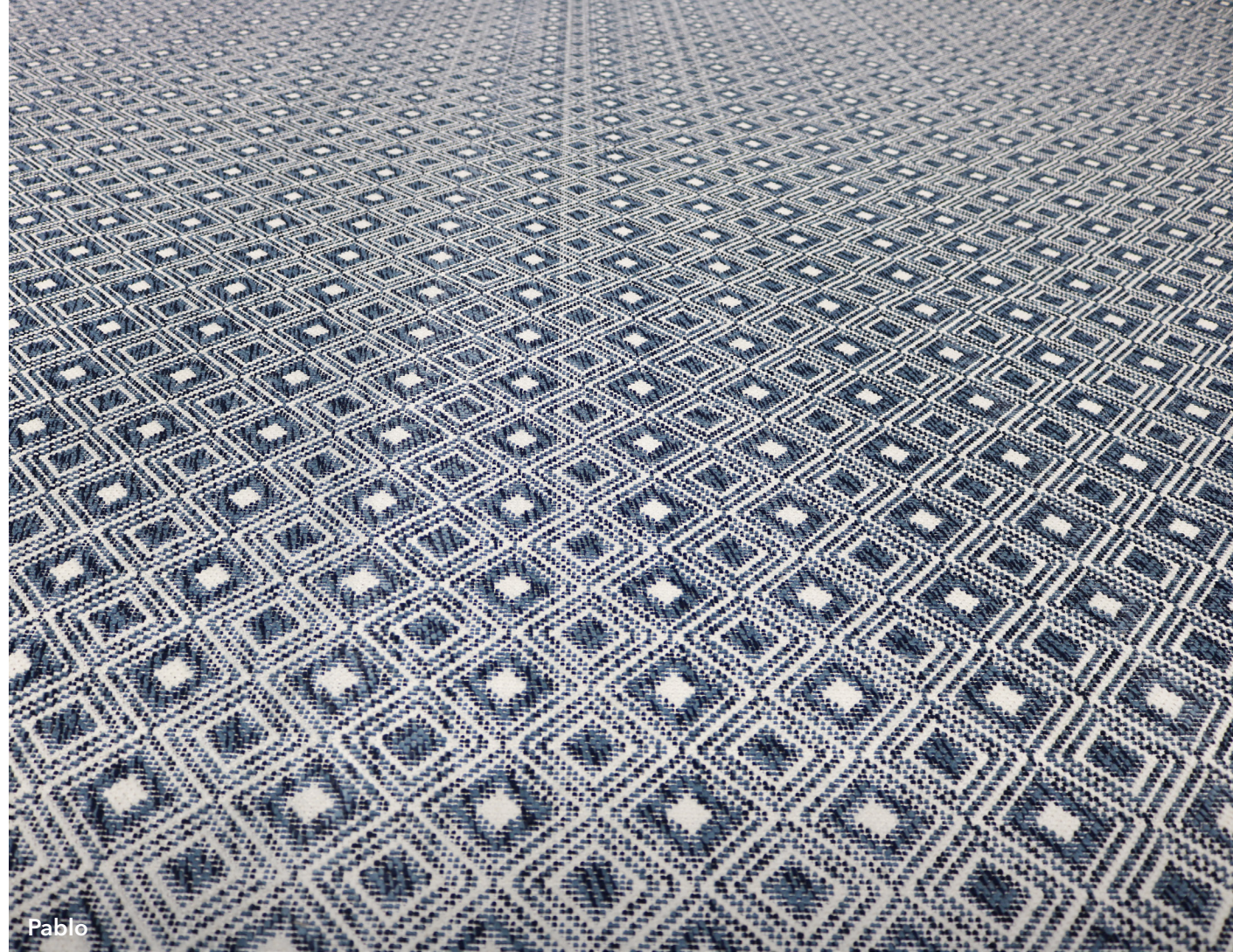
THE LOUVRE FAMILY

Each rug in the Louvre family will have unique qualities inherent to its weave. Every pattern will have a strié effect that can vary from roll to roll. These striations are common and occur during the manufacturing process. This is a natural characteristic of flat wilton construction due to a specific type of barber pole yarn that creates a variation in color density.

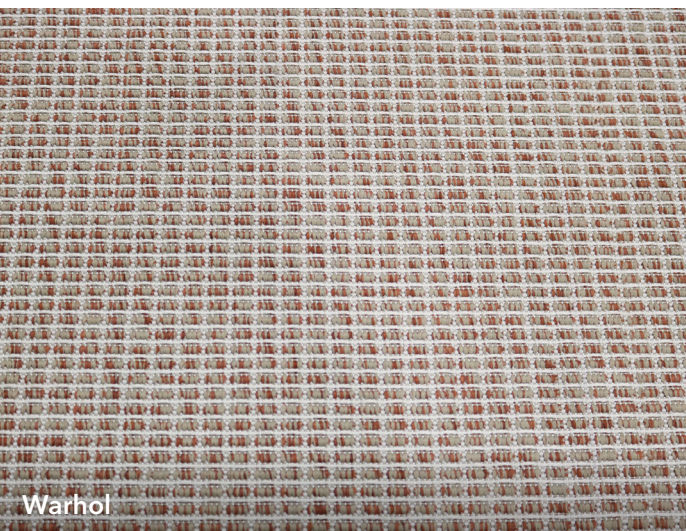
Seaming indoor/outdoor carpet or rugs can be visible. The collections in the Louvre family are not recommended for seaming. All seams are made at the discretion of the purchaser.

Communicating the striations in the Louvre family will enhance the satisfaction and value to your customer. Fibreworks will not honor claims regarding the striations seen in the Pablo, Mondrian, Vincent, and Warhol collections.

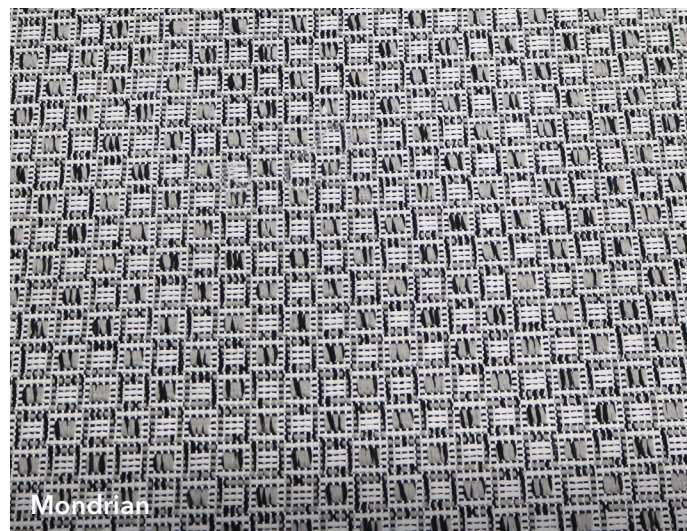
These products are intended for residential use and can withstand heavy traffic.



Pablo



Warhol



Mondrian



Vincent