

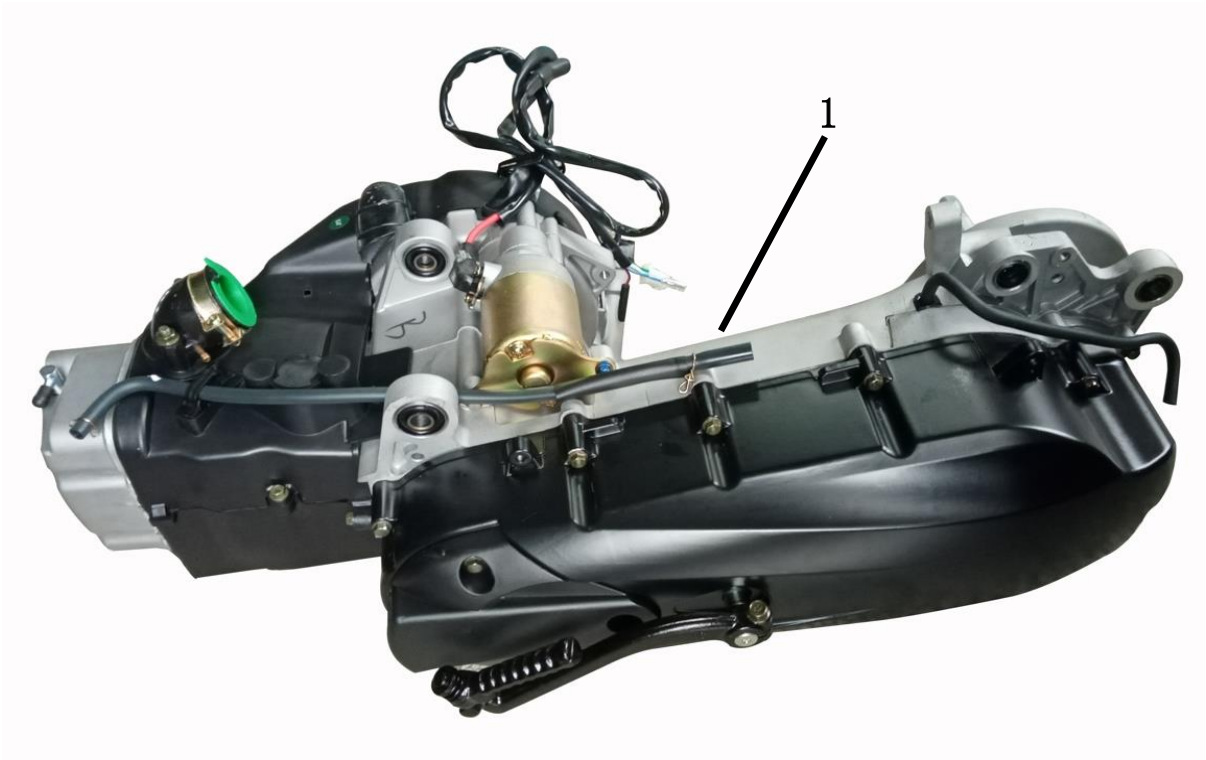
VENOM X19 200CC AUTOMATIC PARTS CATALOG



INTRODUCTION

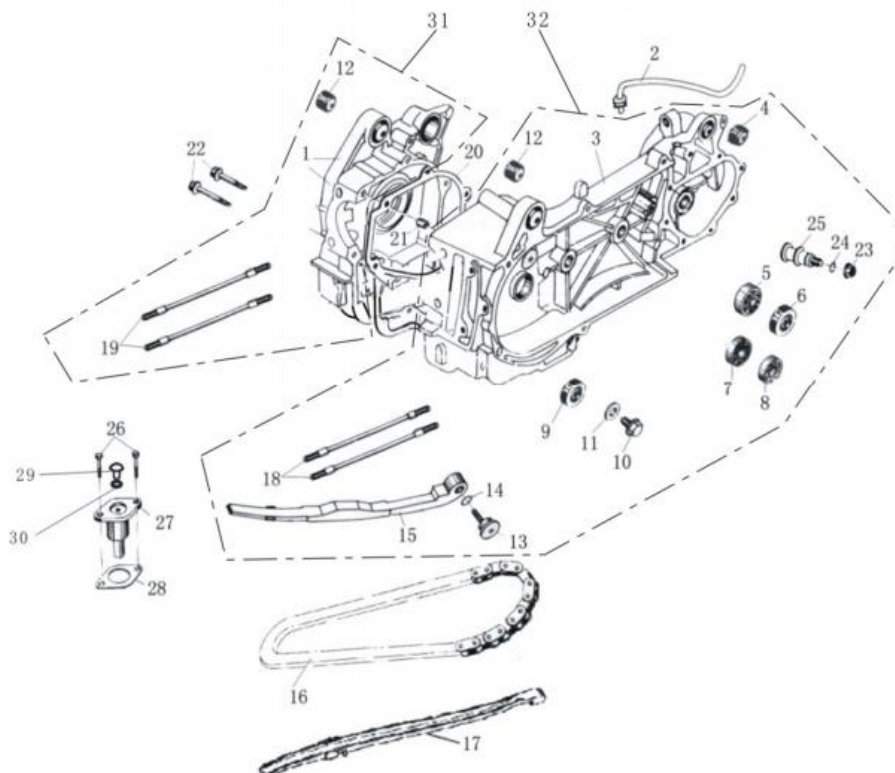
When placing orders for parts, use this booklet as a reference. Refer to the illustrations for the name, item code, or fitment details by examining the size and appearance. Locate the corresponding number in the illustration to identify the name, item code, and quantity. Please note that changes to the information in this booklet may occur without prior notice.

发动机 Engine



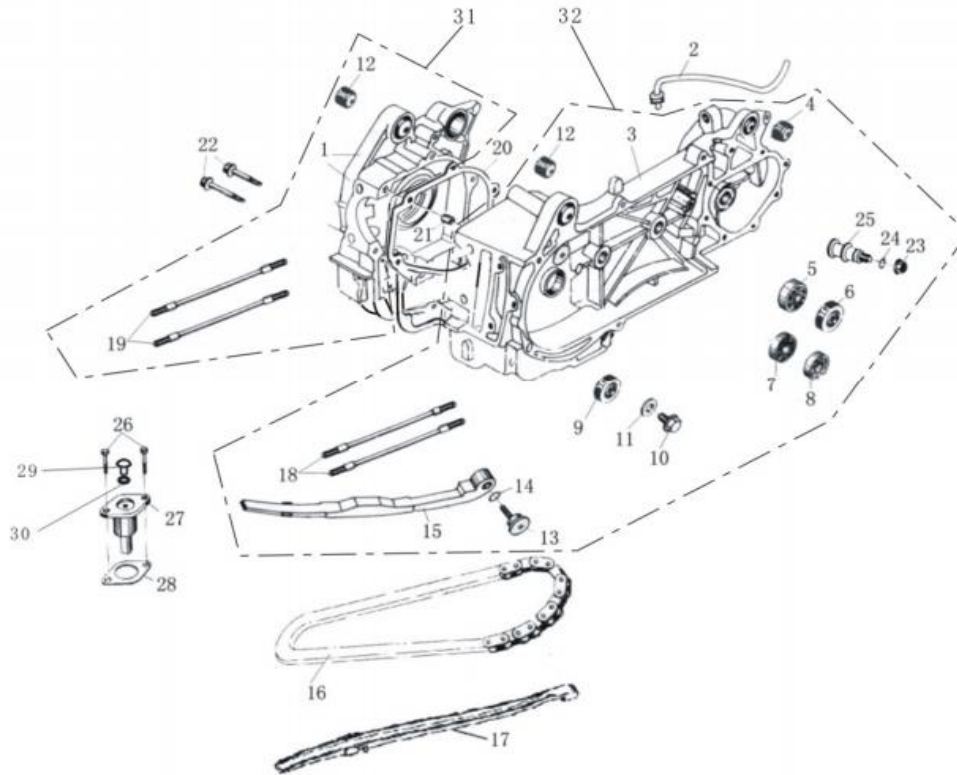
序	件 号	中 文 名 称	英 文 名 称	数 量	单 价
NO	Code name	Chinese	Description	Q'ty	
1	01010091	发动机(11极交流)	Engine	1	

曲轴箱总成 (1) Crankcase 1



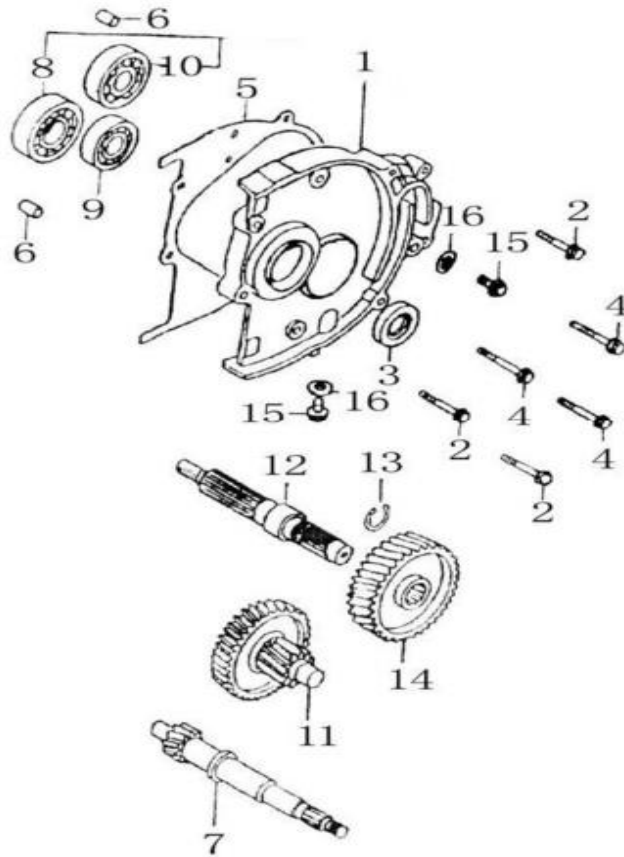
序	件号	中文名称	英文名称	数量	单价
NO	Code name	Chinese	Description	Q'ty	
1	2.20.05.67.02000	右箱体	R.Crankcase Assembly	1	
2	1.20.04.01.12000	通气管组合	Breather Pipe Assembly	1	
3	2.20.04.67.07000	左箱体本体总成	L.Crankcase Assembly	1	
4	1.20.04.01.08000	后减震套	Rear Shock Absorber Sheath	1	
5	1.00.01.6004-2RS	轴承6004-2RS	Bearing 6004-2RS	1	
6	1.20.04.01.10000	输出轴油封27×42×7	Oil Seal of Output Shaft	1	
7	1.00.01.6301	轴承6301	Bearing 6301	1	
8	1.00.01.6002	轴承6002	Bearing 6002	1	
9	1.20.04.01.13000	曲轴油封19.8×30×5	Oil Seal 19.8×30×5	1	
10	1.20.04.01.14000	放油螺栓M12×1.5×14	Bolt M12×1.5×14	1	
11	1.20.04.01.03000	平垫 12×18×1	Rear Gasket 12×18×1	1	
12	1.20.04.01.09000	前减震套	Front Shock Absorber Sheath	2	
13	1.20.13.01.01000	固定拉力杆螺钉	Screw	1	
14	1.20.13.01.02000	O形圈16×1.5	O-Ring 16×1.5	1	
15	1.20.13.01.05000	拉力杆	Tension Rod	1	
16	1.20.13.32.04000	正时链条	Timing Chain	1	
17	1.20.13.01.06000	分气链条导件	Chain Guide	1	
18	1.20.04.06.04000	双头螺柱M8×209	Stud Bolt M8×209	2	
19	1.20.05.06.01000	双头螺柱M8×201	Stud Bolt M8×201	2	
20	1.20.04.01.05000	右箱体垫	Gasket	1	
21	1.20.04.01.01000	定位套 ø8×14	Locating Bush ø8×14	2	
22	1.05.01.09.0650	螺栓M6×50	Bolt M6×50	2	
23	1.05.04.01.0800	螺母SM8	Nut M8	1	
24	1.20.04.01.11000	O形圈7.5×1.5	O-Ring 7.5×1.5	1	
25	1.20.04.03.02000	刹车销	Brake Pin	1	

曲轴箱总成 (2)



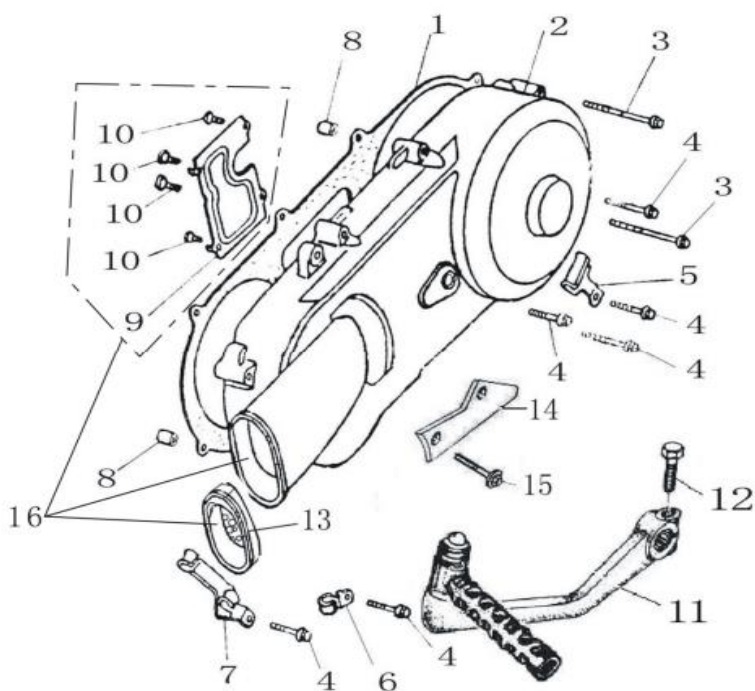
序	件号	中文名称	英文名称	数量	单价
NO	Code name	Chinese	Description	Q'ty	
26	1.05.01.09.0622	螺栓M6×22	Botl M6×22	2	
27	1.20.13.01.07000	压链器	Chain Adjuster	1	
28	1.20.13.01.03000	纸垫	Gasket	1	
29	1.20.13.01.08000	扁头螺钉	Screw	1	
30	1.20.13.01.09000	O形圈9.5*1.5	O-Ring 9.5*1.5	1	
31	2.20.05.67.99000	右箱体总成	R.Crankcase Assembly	1	
32	2.20.04.67.99000	左箱体总成	L.Crankcase Assembly	1	

变速箱盖总成(3) Crankcase Cover ASSY



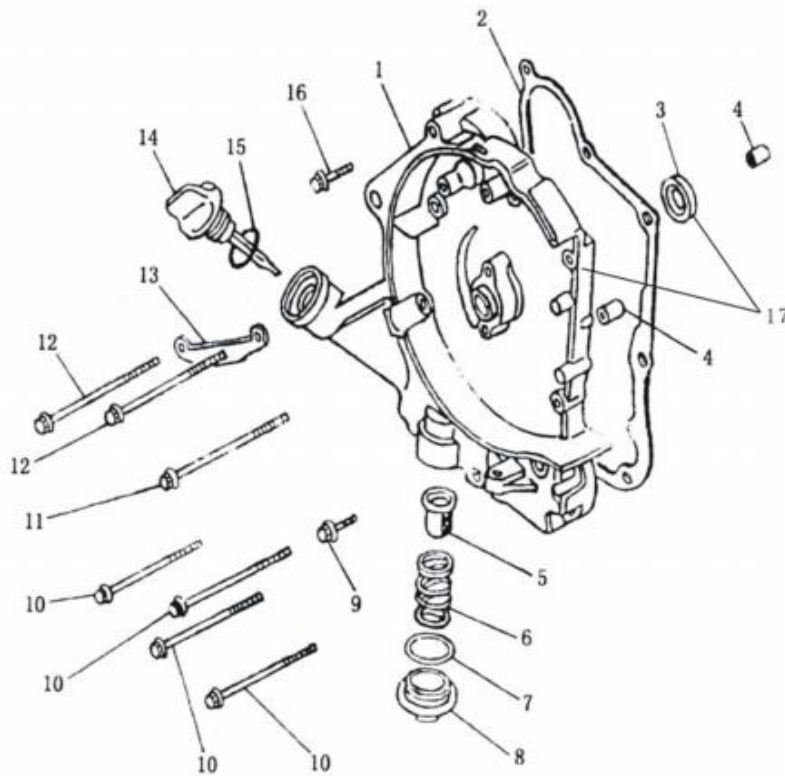
序	件号	中文名称	英文名称	数量	单价
NO	Code name	Chinese	Description	Q'ty	
1	2.20.20.01.01000	变速箱盖	Gearcase Cover	1	
2	1.05.01.09.0628	螺栓M6×28	Bolt M6×28	3	
3	1.20.20.01.08000	输入轴油封20×32×6	Oil Seal 20×32×6	1	
4	1.05.01.09.0635	螺栓M6×35	Bolt M6×35s	3	
5	1.20.20.01.06000	变速箱盖垫片	Gearcase Gasket	1	
6	1.20.04.01.01000	定位套 ø8×14	Locating Bush ø8×14	2	
7	1.20.20.08.02000	输入轴	Input Shaft	1	
8	1.00.01.6204	轴承6204	Bearing 6204	1	
9	1.00.01.6202	轴承6202	Bearing 6202	1	
10	1.00.01.6203	轴承6203	Bearing 6203	1	
11	1.20.20.08.09000	中间齿轮轴组	Intermediate Gear Shaft	1	
12	1.20.20.01.05000	变速箱输出轴	Input Shaft	1	
13	1.05.06.02.2000	轴用挡圈20	Check Ring 20	1	
14	1.20.20.01.03000	输出齿轮	Output Gear	1	
15	1.05.01.09.0812	螺栓M8×12	Bolt M8×12	2	
16	1.20.20.01.07000	垫片	Gasket	2	

左盖总成(4) Left Cover ASSY



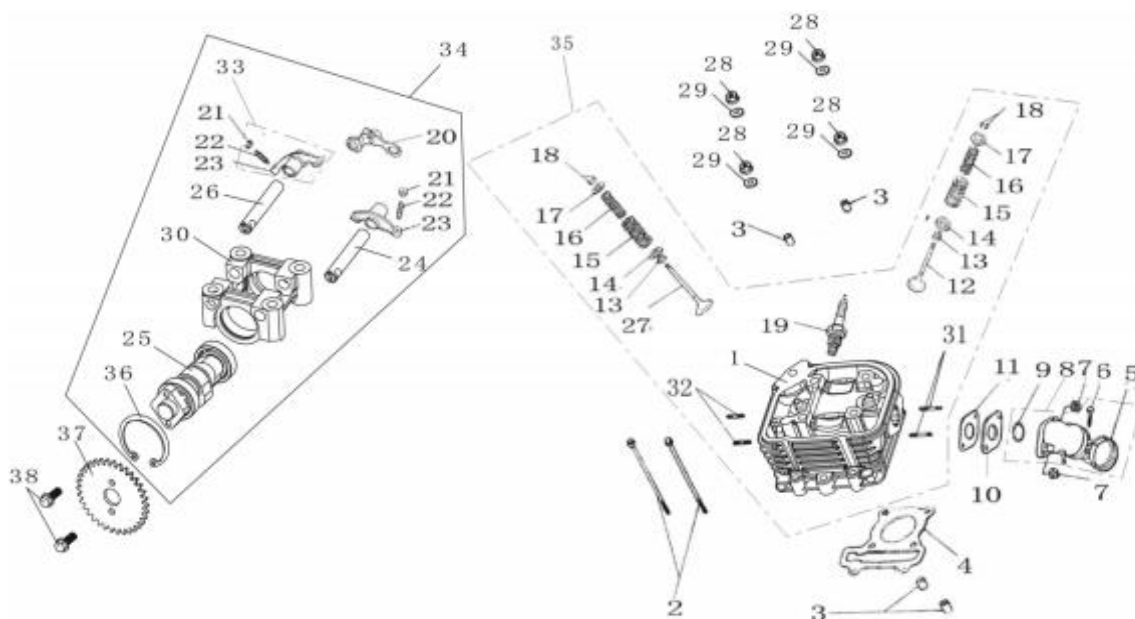
序	件号	中文名称	英文名称	数量	单价
NO	Code name	Chinese	Description	Q'ty	
	1.20.06.03.07000	左盖垫	Gasket,Left Cover	1	
2	2.20.06.03.01000	左盖	Left Cover	1	
3	1.05.01.09.0665	螺栓M6×65	Bolt M6×65	2	
4	1.05.01.09.0640	螺栓M6×40	Bolt M6×40	6	
5	1.20.06.01.06000	刹车导线夹	Brake Retainer Grip	1	
6	1.20.06.01.04000	溢流管夹	Tubing Clamp	1	
7	1.20.06.01.05000	油门拉筋固定架	Accelerator Fixed Bracket	1	
8	1.20.04.01.01000	定位套 ø8×14	Locating Bush ø8×14	2	
9	1.20.06.01.03000	通气导板	Breather Guide Plate	1	
10	1.05.02.03.4208	自攻螺钉ST4.2×8	Tapping Screw ST4.2×8	4	
11	1.20.17.01.05000	起动杆总成	Starting Lever Assembly	1	
12	1.05.01.08.0622	螺栓M6×22	Bolt M6×22	1	
13	1.20.06.01.10000	吸风管	Aspiration Pipe	1	
14	1.20.06.01.08000	固定架	Fixed Bracket	1	
15	1.05.01.09.0612	螺栓M6×12	Bolt M6×12	1	
16	2.20.06.03.99000	左盖总成	Left Cover Assembly	1	

右箱体端盖总成 (5) Right Crankcase Cover Assy



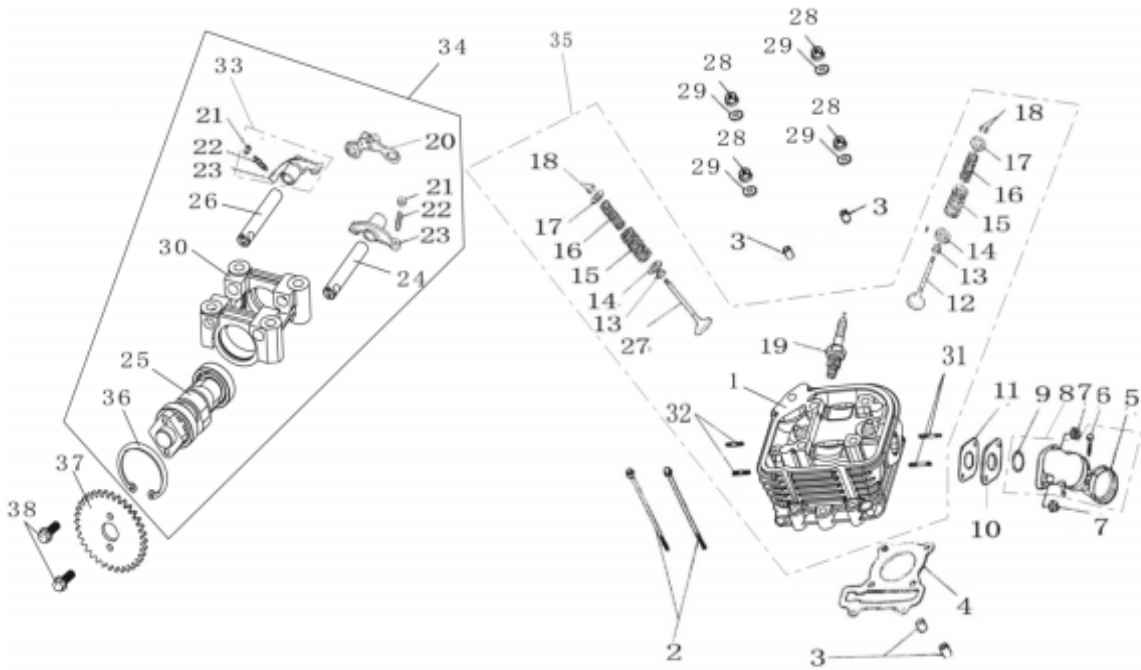
序	件号	中文名称	英文名称	数量	单价
NO	Code name	Chinese	Description	Q'ty	
1	2.20.07.01.01000	右盖	Right Cover	1	
2	1.20.07.01.06000	右盖垫	Gasket,Right Cover	1	
3	1.20.04.01.13000	曲轴油封19.8×30×5	Oil Seal 19.8×30×5	1	
4	1.20.04.01.01000	定位套φ8×14	Locating Bush φ8×14	2	
5	1.20.07.01.09000	滤油网	Oil-Filter Screen	1	
6	1.20.07.01.03000	滤油网弹簧	Spring,Oil-Filter Screen	1	
7	1.20.07.01.04000	O形圈30.5×3	O-Ring 30.5×3	1	
8	1.20.07.01.02000	滤油网螺帽	Oil-Filter Screen Nut	1	
9	1.05.01.09.0632	螺栓M6×32	Bolt M6×32	1	
10	1.05.01.09.0695	螺栓M6×95	Bolt M6×95	4	
11	1.05.01.09.06100	螺栓M6×100	Bolt M6×100	1	
12	1.05.01.09.06110	螺栓M6×110	Bolt M6×110	2	
13	1.20.07.01.08000	触发线卡	Trigger Line Card	1	
14	1.20.07.01.05000	机油尺	Oil Level Gauger	1	
15	1.20.07.01.07000	O形圈18×3	O-Ring 18×3	1	
16	1.05.01.09.0635	螺栓M6×35	Bolt M6×35	1	
17	2.20.07.01.99000	右盖总成	Right Cover Assy	1	

气缸头总成 (7) Cylinder Head ASSY



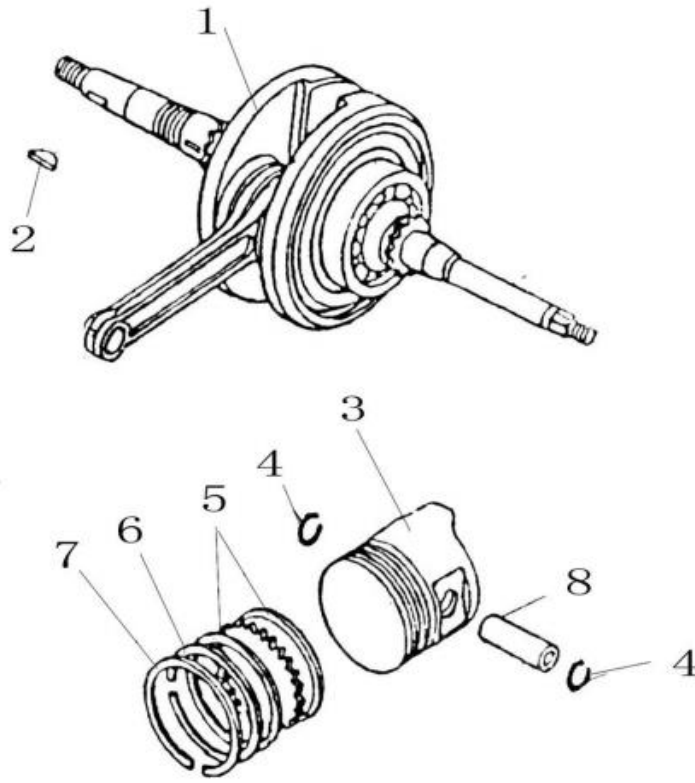
序	件号	中文名称	英文名称	数量	单价
NO	Code name	Chinese	Description	Q'ty	
1	2.20.01.67.13001	气缸头组 (补气状态)	Cylinder Head ASSY	1	
2	1.05.01.09.06100	螺栓M6×100	Bolt M6×100	2	
3	1.20.01.01.01000	定位套φ10×16	Locating Bush φ10×16	4	
4	1.20.01.09.15000	气缸头垫片	Cylinder Head Gasket	1	
5	1.20.01.01.16010	进气管夹	Pipe Clamp	1	
6	1.05.02.01.0425	螺钉M4×25	Screw M4×25	1	
7	1.05.04.02.0600	螺母M6	Nut M6	2	
8	1.20.01.01.16000	进气管总成	Intake-Tube Assy	1	
9	1.00.14.265180	O形圈26.5×1.8	O-Ring 26.5×1.8	1	
10	1.20.01.01.12000	隔热板	Thermal Baffle	1	
11	1.20.01.01.11000	垫板	Base Plate	1	
12	1.20.01.06.06000	进气门	Inlet Valve	1	
13	1.20.01.01.14000	气门油封	Oil Seal, Valve	2	
14	1.20.01.01.10000	垫片	Gasket	2	
15	1.20.01.06.09000	气门外弹簧	Outer Valve Spring	2	
16	1.20.01.06.08000	气门内弹簧	Inner Valve Spring	2	
17	1.20.01.01.05000	气门弹簧座	Valve Spring Retainer	2	
18	1.20.01.01.07000	气门锁块	Valve Cotter	4	
19	1.20.01.01.17000	火花塞	Spark Plug	1	
20	1.20.12.01.05000	止动板组	Stop Plate	1	
21	1.20.12.01.04020	调整螺母	Adjusting Nut	2	
22	1.20.12.01.04030	调整螺丝	Adjusting Screw	2	
23	1.20.12.06.04010	摇臂	Rocker Arm	2	
24	1.20.12.06.03000	进气摇臂轴组	Inlet Rocker Arm Shaft Assy	1	

气缸头总成 (7) Cylinder Head Assy



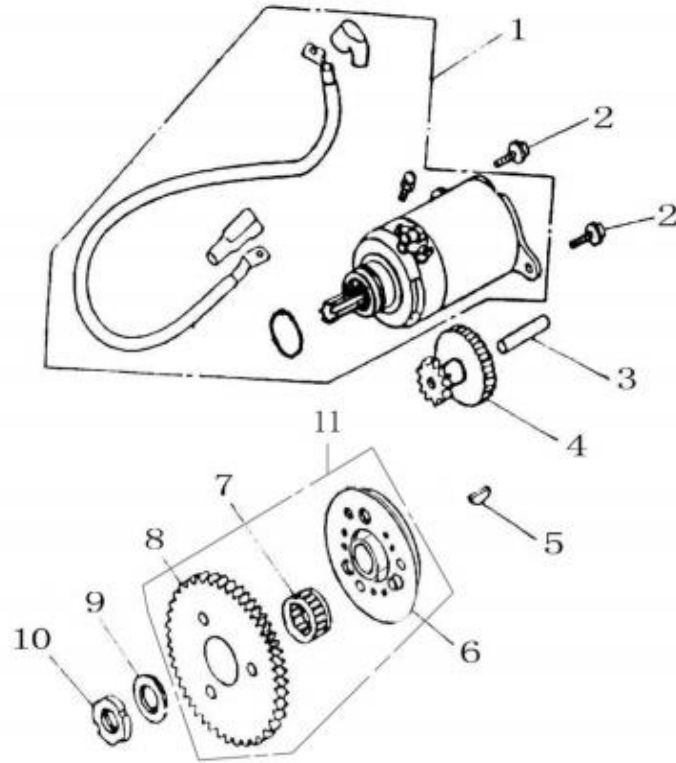
序	件号	中文名称	英文名称	数量	单价
NO	Code name	Chinese	Description	Q'ty	
25	1.20.11.06.01000	凸轮轴总成	Camshaft Assy	1	
26	1.20.12.06.02000	排气摇臂轴	Inlet Rocker Arm Shaft	1	
27	1.20.01.06.04000	排气门	Exhaust Valve	1	
28	1.05.04.02.0800	螺母M8	Nut M8	4	
29	1.20.04.01.06000	垫圈8	Washer 8	4	
30	2.20.12.06.01000	凸轮轴座	Camshaft Retainer	1	
31	1.20.01.01.03000	双头螺柱M6×63	Stud Bolt M6×63	2	
32	1.20.01.08.02000	双头螺柱M8×32	Stud Bolt M8×32	2	
33	1.20.12.06.04000	气门摇臂	Valve Rocker	2	
34	2.20.12.06.99000	凸轮轴座总成	Camshaft Tetainer Assy	1	
35	2.20.01.67.99001	气缸头总成 (补气状态)	Cylinder Head Assy	1	
36	1.05.06.01.3500	孔用挡圈35	Check Ring	1	
37	1.20.11.32.02000	正时链轮	Timing Sprocket	1	
38	1.05.01.08.0512	螺栓M5×12	Bolt M5×12	2	

曲轴连杆组件、活塞组件 (9) Camshaft & Piston



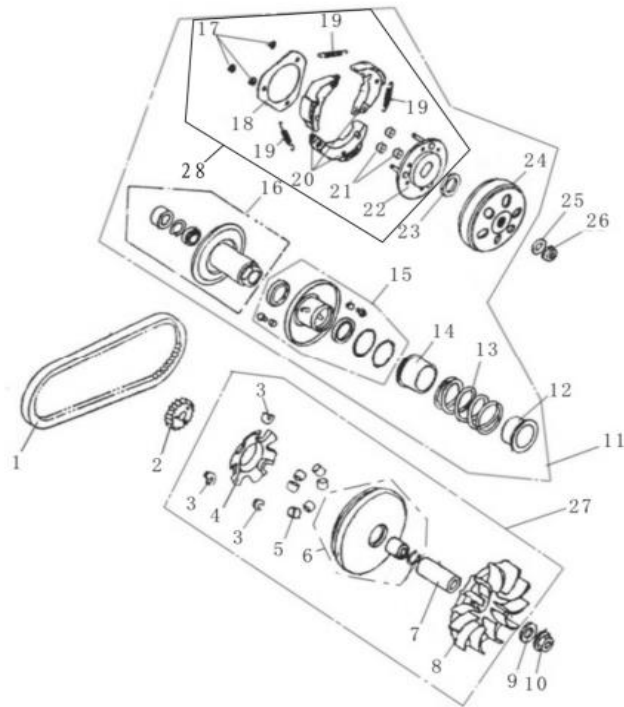
序 NO	件号 Code name	中文名称 Chinese	英文名称 Description	数量 Q'ty	单价
1	1.20.09.08.01000	曲轴连杆总成	Connecting Rod of Crank Shaft	1	
2	1.20.09.01.01010	半圆键	Woodruff Key	1	
3	1.20.10.08.01000	活塞	Piston	1	
4	1.20.10.08.04000	活塞销卡簧	Clamp Spring	2	
5		油环组合(含刮片环)	Oil Ring	1	
6	1.20.10.08.02000	第二道气环	Piston Ring 1		
7		第一道气环	Piston Ring 2		
8	1.20.10.08.03000	活塞销	Piston Pin	1	

电启动部件



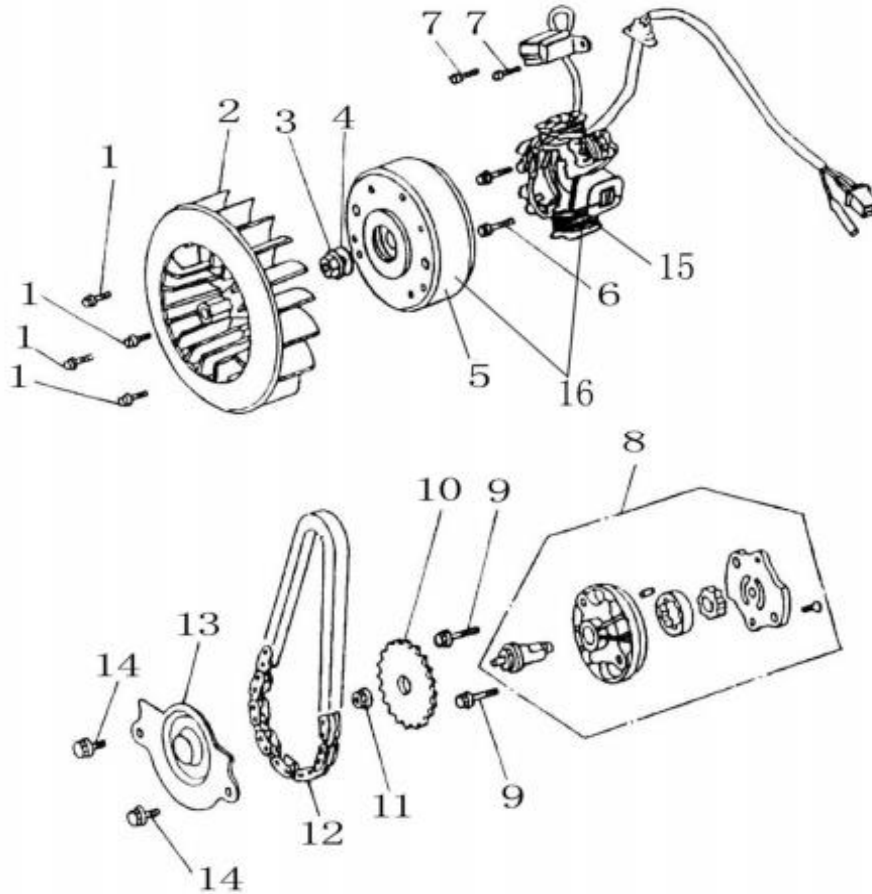
序	件号	中文名称	英文名称	数量	单价
NO	Code name	Chinese	Description	Q'ty	
1	1.20.18.01.01000	起动电机总成	Starter Motor ASSY	1	
2	1.05.01.09.0616	螺栓M6×16	Bolt M6X16	2	
3	1.20.18.01.02000	齿轮轴	Starter Reduction Gear Shaft	1	
4	1.20.18.01.03000	过渡齿轮	Starter Reduction Gear	1	
5	1.20.09.01.01010	半圆键	Wood druff Key	1	
6	1.20.19.08.01020	超越离合器组件	Overrunning Clutch ASSY	1	
7	1.20.19.01.01040	滚针轴承	Needle Bearing	1	
8	1.20.19.03.01030	从动齿轮组合	Driven Bearing ASSY	1	
9	1.20.19.01.03000	垫片	Washer	1	
10	1.20.19.01.02000	锁紧螺母SM22×1左	Lock Nuts M22	1	
11	1.20.19.08.01000	起动超越离合器	Over Running Clutch	1	

主、动皮带轮总成（一）



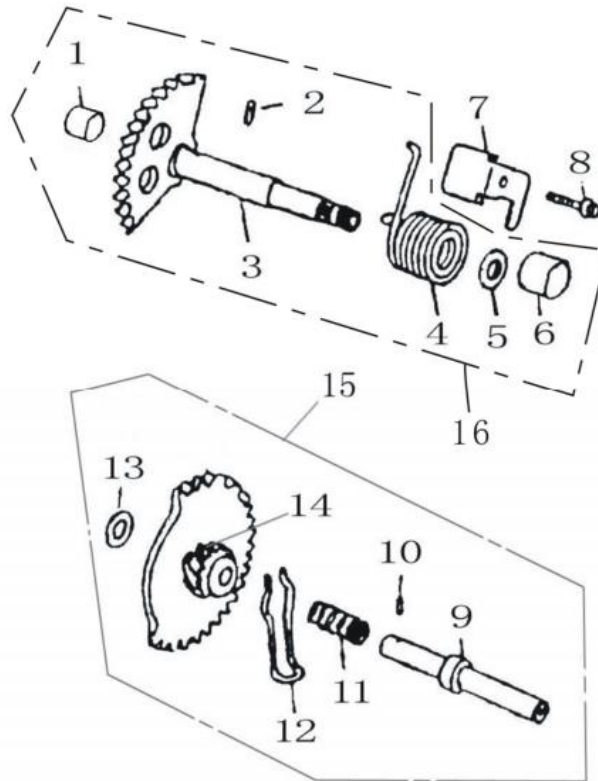
序	件号	中文名称	英文名称	数量	单价
NO	Code name	Chinese	Description	Q'ty	
1	157019000	齿形三角皮带842	V Belt	1	
2	1.20.17.08.04000	起动齿轮	Starter Gear	1	
3	1.20.21.01.01060	琅块	Weights	3	
4	1.20.21.01.01050	拖动法兰	Flange Plate	1	
5	1.20.21.01.01040	离心滚柱	Weight Tube	6	
6	1.20.21.01.01030	右主动轮组合	Right Driving Gear ASSY	1	
7	1.20.21.08.01020	衬套	Bushing	1	
8	1.20.21.01.01010	驱动皮带扇叶盘	Bladed Disc	1	
9	1.05.05.04.1200	垫圈12.3×29×2.5	Washer 12.3×29×2.5	1	
10	1.05.04.10.1213	螺母M12×1.25 H=10	Nut M12×1.25 H=10	1	
11	152160000	从动皮带轮总成	Driven gear ASSY	1	
25	1.05.05.04.1200	垫圈12.3×29×2.5	Washer 12.3×29×2.5	1	
26	1.05.04.10.1212	螺母M12×1.25 H=8	Nut M12×1.25 H=8	1	
27	1.20.21.08.01000	主动皮带轮总成	Driving Belt ASSY	1	

磁电机部件、机油泵部件



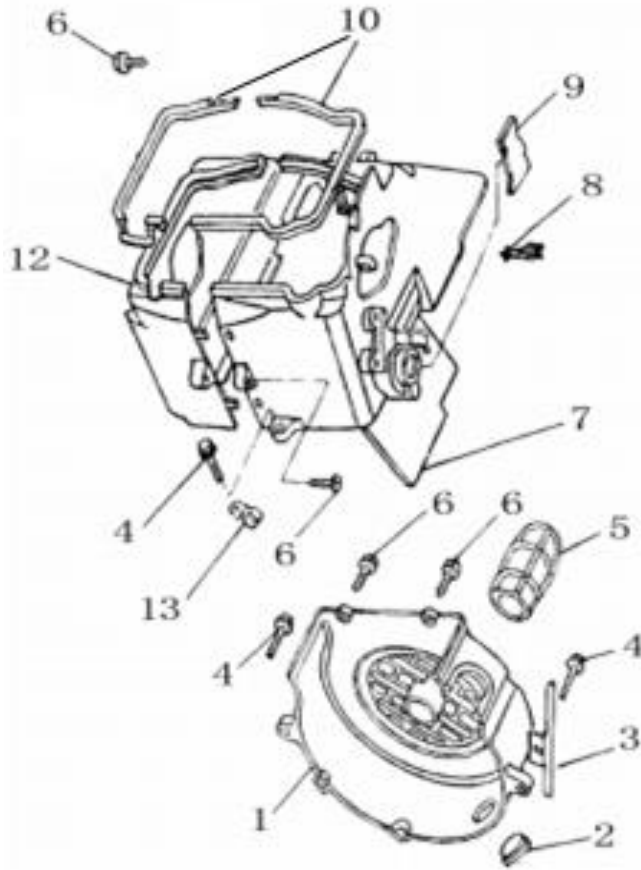
序	件号	中文名称	英文名称	数量	单价
NO	Code name	Chinese	Description	Q'ty	
1	1.05.01.09.0618	螺栓M6×18	Bolt M6X18	4	
2	1.20.24.01.06000	风扇组合	Fan Assy	1	
3	1.05.04.10.1213	螺母M12×1.25 H=10	Nut M12X1.25 H=10	1	
4	1.05.05.04.1201	平垫12-14HV	Washer 12-14 HV	1	
5	1.20.16.01.01020	飞轮	Flywheel(Rotor)	1	
6	1.05.01.09.0620	螺栓M6×20	Bolt M6X20	2	
7	1.05.01.08.0512	六角螺栓M5×12	Hex Bolt M5X12	2	
8	1.20.14.01.03000	机油泵组合	Oil Pump Assy	1	
9	1.05.01.09.0625	螺栓M6×25	Bolt M6X25	2	
10	1.20.14.01.01000	油泵链轮	Oil pump sprocket	1	
11	1.05.04.02.0600	螺母M6	Nut M6	1	
12	1.20.14.01.04000	油泵链条	Oil pump Chain	1	
13	1.20.14.01.02000	链轮端盖	Sprocket side Cover	1	
14	1.05.01.09.0612	螺栓M6×12	Bolt M6X12	2	
15					
15	1.20.16.01.01012	定子组件 (直流11级)	Stator (DC 11 pole)	1	
16					
16	1.20.16.01.01002	磁电机总成 (直流11级)	Magneto (DC 11 pole)	1	

脚启动机构总成



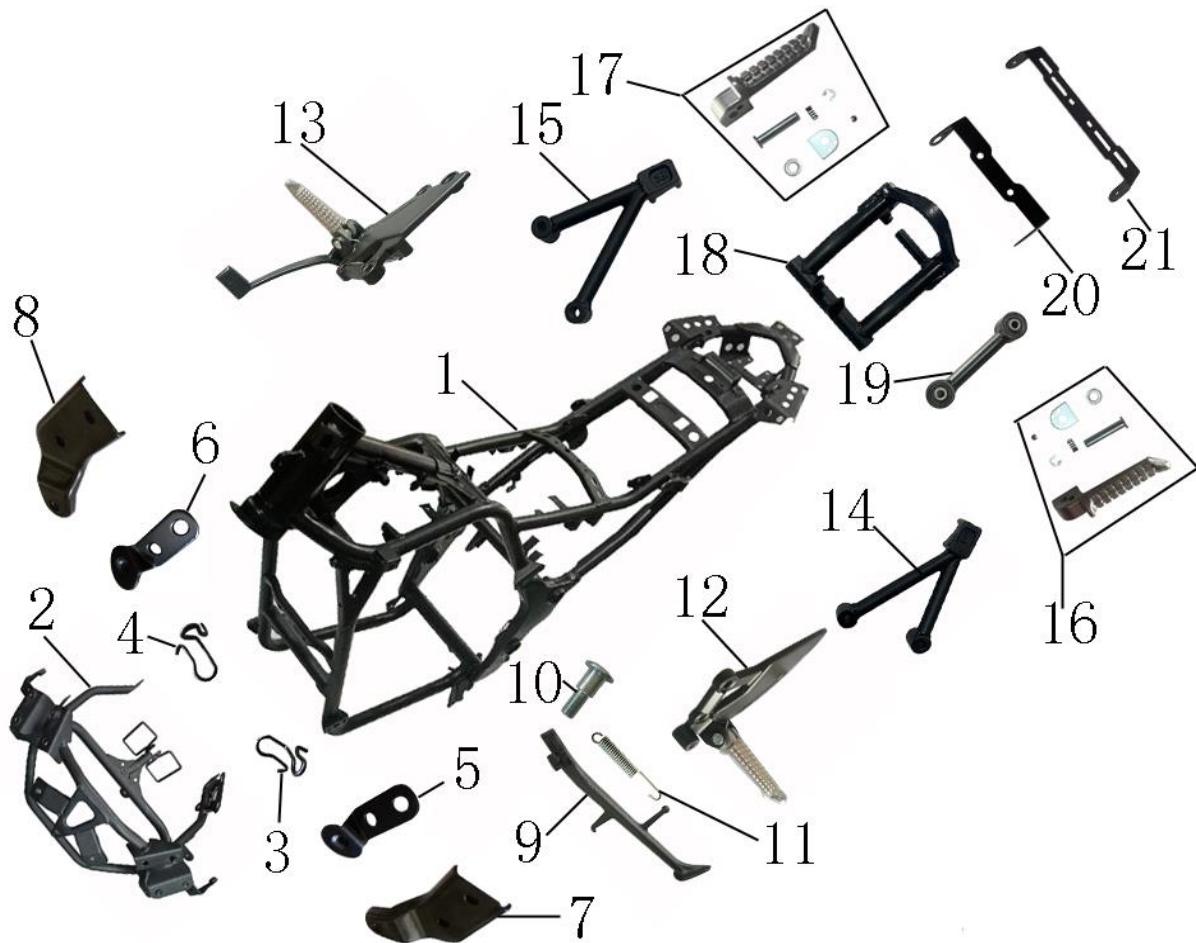
序	件号	中文名称	英文名称	数量	单价
NO	Code name	Chinese	Description	Q'ty	
1	1.20.17.01.01010	衬套 (I)	Bushing	1	
2		销	Pin	1	
3	1.20.17.01.01050	起动轴组合	Starter Shaft	1	
4	1.20.17.01.01020	扭簧	Spring	1	
5	1.20.17.01.01030	垫片	Washer	1	
6	1.20.17.01.01040	衬套 (II)	Bushing	1	
7	1.20.17.01.02000	起动扭簧压片	Spring Lock	1	
8	1.05.01.09.0614	螺栓M6×14	Bolt M6X14	1	
9	1.20.17.01.03030	惰轮轴	Starter Idle Shaft	1	
10	1.05.08.02.0308	圆柱销A3×8	Pin A3X8	1	
11	1.20.17.01.03020	压簧	Spring	1	
12	1.20.17.01.03050	叉簧	Fork Spring	1	
13	1.20.17.01.03040	调整垫片	Washer	1	
14	1.20.17.01.03010	斜齿轮	Starter Idle gear	1	
15	1.20.17.01.03000	惰轮组	Starter Idel Gear Assy	1	
16	1.20.17.01.01000	起动轴总成	Starter Shaft Assy	1	

导风罩分总成



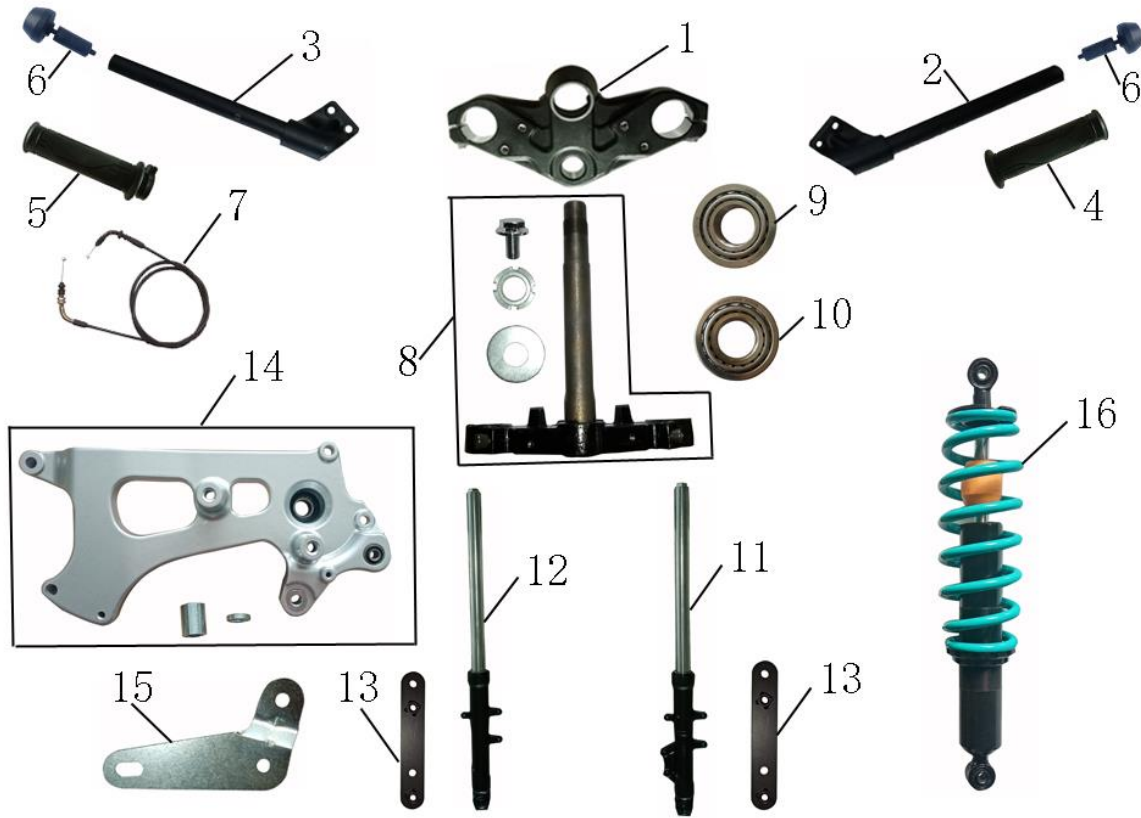
序	件号	中文名称	英文名称	数量	单价
NO	Code name	Chinese	Description	Q'ty	
1	1.20.24.03.03000	风扇盖	Fan Cover	1	
2	1.20.24.01.03020	窗口堵盖	Plug Cap	1	
3	1.20.24.01.04000	电缆线夹	Wire Clip	1	
4	1.05.01.09.0625	螺栓M6×25	Bolt M6X25	3	
5	1.20.24.01.03010	冷却导管	Cooling Pipe	1	
6	1.05.02.15.4816	自攻螺钉ST4.8×16-F-H	Self-drilling screw	5	
7	1.20.24.06.01020	上导风罩组件	Air outlet Shroud (up)	1	
8	1.20.24.01.01040	高压线夹	Cable Clip	1	
9	1.20.24.01.01030	橡胶盖	Rubber Cap	1	
10	1.20.24.01.01010/ 1.20.24.01.01010	161-B2上、下密封胶垫	Upper&Lower Rubber Mat	1	
12	1.20.24.06.02000	下导风罩组合	Air outlet Shroud (lower)	1	
13	1.20.24.01.05000	溢流管夹	Ovcerflow pipe Clip	1	

车架和附件 Frame and Accessory



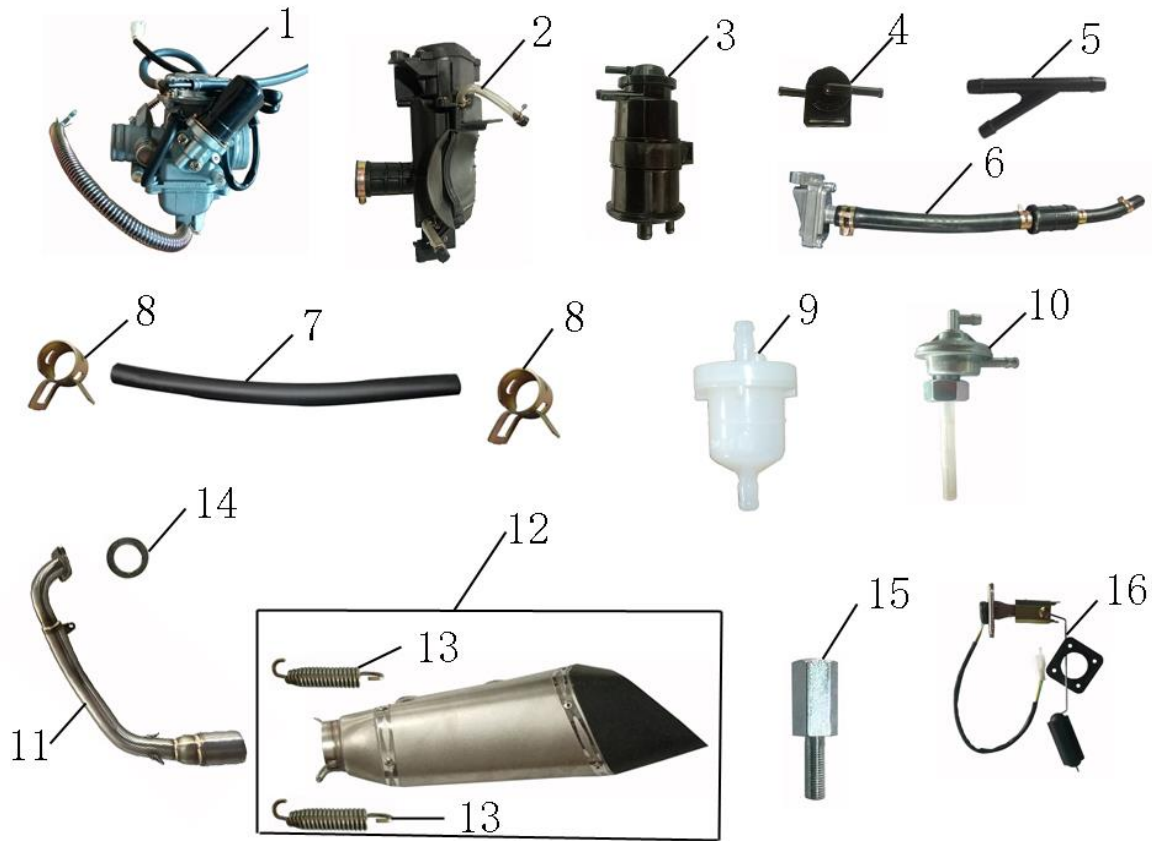
序 NO	件号 Code name	中文名称 Chinese	英文名称 Description	数量 Q'ty	单价
1	0201-DF200SST-23	车架	Frame ASSY	1	
2	02011919	前支架	Front bracket	1	
3	02012209	手把开关左线钩	Left wire hook	1	
4	02012210	手把开关右线钩	Right wire hook	1	
5	02012199	大灯左连接件	Headlight left connector	1	
6	02012200	大灯右连接件	Headlight right connector	1	
7	02011925-1	左侧塑件下安装支架	Left plastic lower mounting bracket	1	
8	02011925-2	右侧塑件下安装支架	Right plastic lower mounting bracket	1	
9	02012202	单撑	Side stand	1	
10	15010063	单撑螺丝	Bolt,side stand	1	
11	07020138	单撑弹簧	Spring,side stand	1	
12	02050077	搁脚组合前左	Foot rest combination front left	1	
13	02050078	搁脚组合前右(带制动踏板)	Foot rest combination front right	1	
14	02012196	后搁脚支架(左)	Rear foot rest bracket (left)	1	
15	02012197	后搁脚支架(右)	Rear foot rest bracket (right)	1	
16	02050079	后搁脚头头左	Rear foot rest head left	1	
17	02050080	后搁脚头头右	Rear foot rest head right	1	
18	02012192	吊架	Hanger	1	
19	02012193	吊架拉杆	Hanger tie rod	1	
20	02011926	后转向灯支架	Bracket,rear turnlight	1	
21	02012151	牌照支架	Licence bracket	1	
22					

转向系统、减震系统 SUSPENSION



序	件号	中文名称	英文名称	数量	单价
NO	Code name	Chinese	Description	Q'ty	
1	02030769	上联板	Upper Coonection Plate	1	
2	02030766	左手把	Handle bar,Left	1	
3	02030767	右手把	Handle bar,Right	1	
4	10020086	左把套	Handle grip,Left	1	
5	10020087	油门把套	Throttle Handle Grip	1	
6	10020088	平衡块	Balancer	2	
7	08020311	油门线(L:1420mm, S:108mm)	Throttle Cable(L:1420mm,S:108mm)	1	
8	02030204	下联板	Lower connecting plate	1	
9	12030066	圆锥滚子轴承30205/Φ25*Φ52*16.25	Tapered roller bearing30205/Φ25*Φ52*16.25	1	
10	12030067	圆锥滚子轴承30206/Φ30*Φ62*17.25	Tapered roller bearing30206/Φ30*Φ62*17.25	1	
11	07010206	前减震器(左)	Front Suspension Absorber(Left)	1	
12	07010206	前减震器(右)	Front Suspension Absorber(Right)	1	
13	02011921	前泥板支架	Bracket,Front Fender	1	
14	02012150-1	动力连接板(含2衬套)	connection plate (including 2 bush)	1	
15	02012201	后减震安装固定片	Bracket,Rear Absorber	1	
16	07010208	后减震(L:405MM)	Rear suspension absorber (L:405)	1	

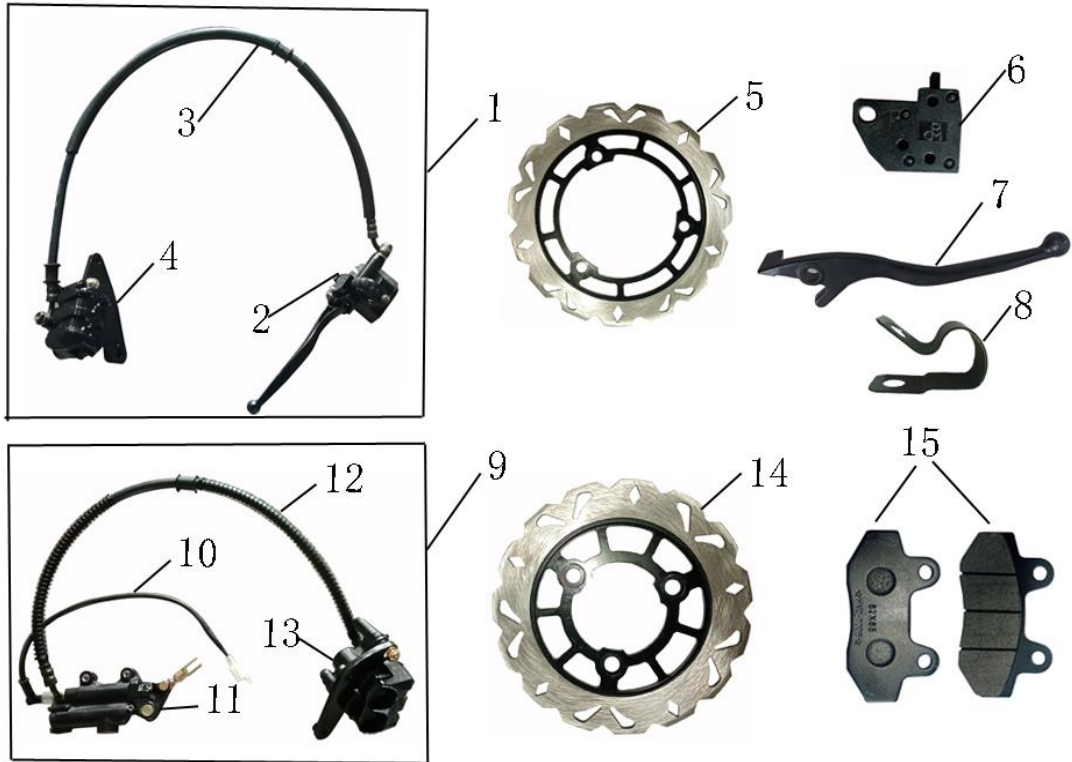
供给系统 Supply System



序 NO	件号 Code name	中文名称 Chinese	英文名称 Description	数量 Q'ty	单价
1	01030013-3	化油器	Carburetor	1	
2	01040012	空滤器	Air clearer	1	
3	01990070	碳罐	Carbon canister	1	
4	01990043	阻断阀	blocked valve	1	
5	06990086	Y型三通接头	Y-shaped tee joint	1	
6	01990001	二次补气装置	Secondary air supply device	1	
7	06030006-1	汽油管Φ4.5*Φ8.5	Fuel pipe	1	
8	12010007	油管夹8.5	Oil pipe clamp 8.5	2	
9	06990001	二级过滤器	Secondary filter	1	
10	10060010	油箱开关	Fuel switch	1	
11	01050115	消声器前管(带补气)	Muffler front pipe (with air supply)	1	
12	01050116	消声器筒体/小黄蜂款	Muffle pipe	1	
13		弹簧	Spring	2	
14	01990024	排气管垫	Gasket,muffler	1	
15	15010064	消声器螺柱	Bolt for muffler	2	
16	10040091	燃油传感器	Fuel sensor	1	

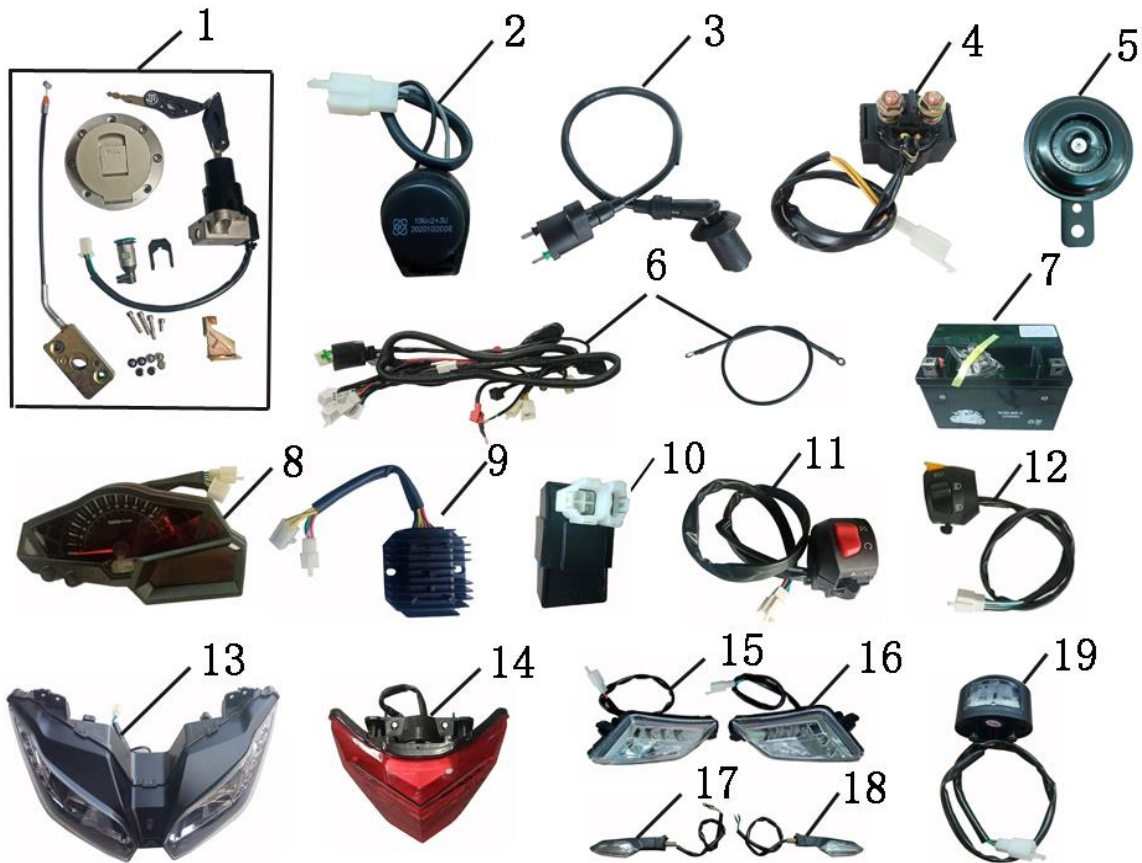
前后轮总成 Front&Rear Wheel ASSY

前后碟刹 Front & Rear Disc Brake



序 NO	件号 Code name	中文名称 Chinese	英文名称 Description	数量 Q'ty	单价
1	04010132	前碟刹总成	Front Disc Brake ASSY	1	
2		前碟刹上泵	Front disc brake upper pump	1	
3		前碟刹油管	Front disc brake oil pipe	1	
4		前碟刹下泵	Front disc brake lower pump	1	
5	04020072	碟刹盘 $\phi 115 \times \phi 230 \times \phi 133/3$	Brake Disc (Front)	1	
6	190043	方(形)碟刹开关	Micro Switch	1	
7		前碟刹手柄	Front disc brake handle	1	
8	12990030	碟刹管线夹	Clamp for brake hose	1	
9	04010133	后碟刹总成	Rear Disc Brake ASSY	1	
10		后碟刹开关	Rear disc brake switch	1	
11		后碟刹前泵	Rear disc brake front pump	1	
12		后碟刹油管	Rear disc brake oil pipe	1	
13		后碟刹后泵	Rear disc brake rear pump	1	
14	04020071	碟刹盘 $\phi 58 \times \phi 180 \times \phi 80/3$	Brake Disc (Rear)	1	
15	190061	刹车片	Rear Brake Pad	2	

电气系统 ELECTRICAL SYSTEM



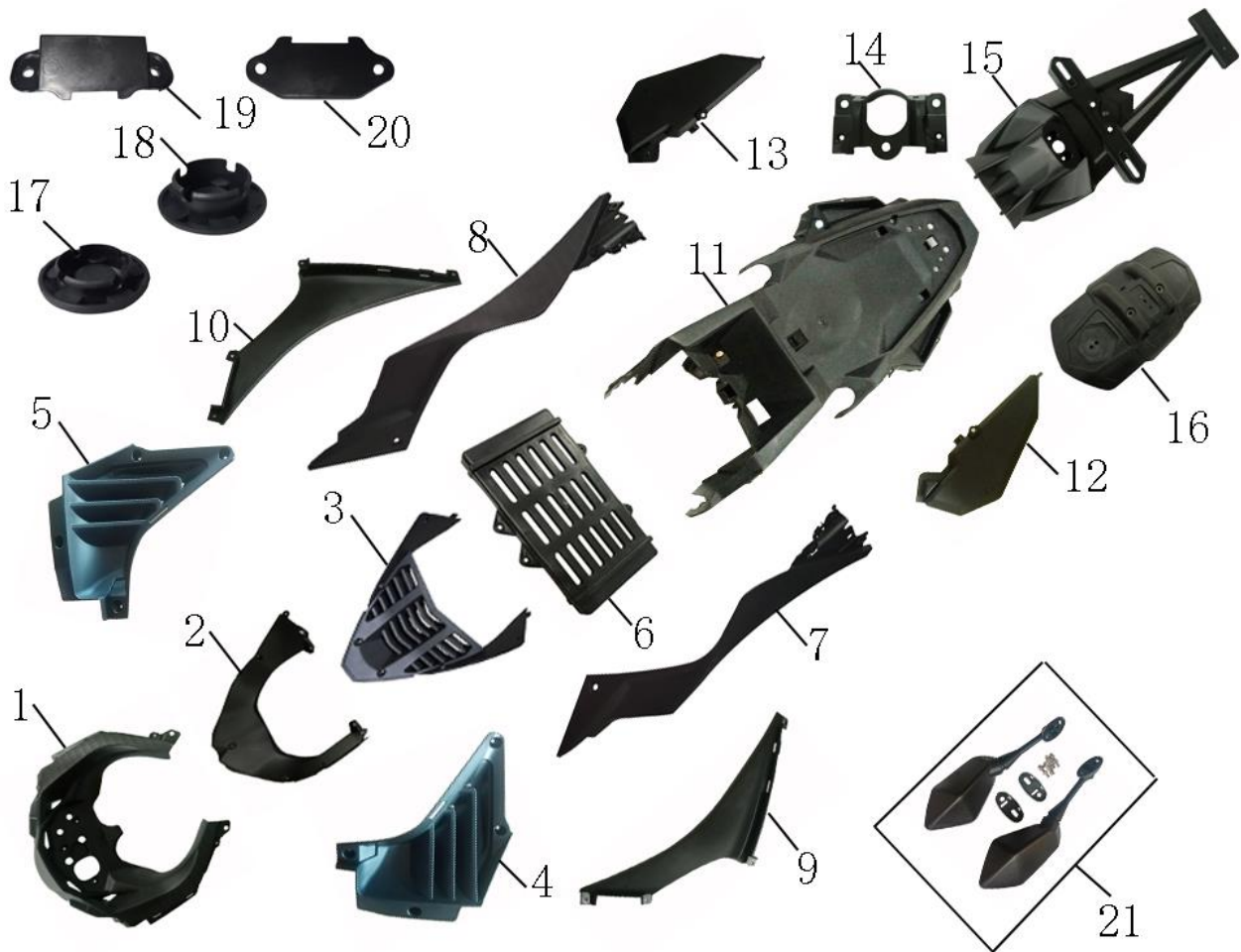
序 NO	件号 Code name	中文名称 Chinese	英文名称 Description	数量 Q'ty	单价
1	10080058	套锁	Lock Sets	1	
2	01020011	闪光器	Flasher	1	
3	01020022	高压包	Ignition Coil	1	
4	01020021	继电器	Relay	1	
5	10070001	喇叭	Horn	1	
6	08010157	电缆线	Harness	1	
7	10990019	电瓶	Battery	1	
8	10050093	仪表	Speedometer	1	
9	01020084	整流器	Rectifier	1	
10	01020016	点火器	CDI	1	
11	10010123-1	组合开关左	Switch ASSY,Left	1	
12	10010123-2	组合开关右	Switch ASSY,Right	1	
13	09010091	前大灯	Headlight	1	
14	09030084	后尾灯	Taillight	1	
15	09020153-1	前左转向灯	Front Turnlight,Left	1	
16	09020153-2	前右转向灯	Front Turnlight,Right	1	
17	09020154-1	后左转向灯	Rear Turnlight,Left	1	
18	09020154-2	后右转向灯	Rear Turnlight,Right	1	
19	09030085	牌照灯	Licence light	1	

外观件1 Painting Covering



序	件号	中文名称	英文名称	数量	单价
NO	Code name	Chinese	Description	Q'ty	
1	03010672	前泥板/DF200SST-23	Front Fender	1	
2	03010674	前面盖/DF200SST-23	Front Panel	1	
3	03030993	挡风罩	Windshield	1	
4	03010725	前左大板/DF200SST-23	Front large panel;Left	1	
5	03010726	前右大板/DF200SST-23	Front large panel;Right	1	
6	03010675	前左护板/DF200SST-23	Front Guard Board;Left	1	
7	03010676	前右护板/DF200SST-23	Front Guard Board;Right	1	
8	03010677	左侧板/DF200SST-23	Side Panel; Left	1	
9	03010678	右侧板/DF200SST-23	Side Panel; Right	1	
10	03010723	跑车主后护板/DF200SST-23	Rear Guard,Left	1	
11	03010724	跑车主后护板/DF200SST-23	Rear Guard,Right	1	
12	05030077	油箱/DF200SST-23	Fuel Tank	1	
13	03010677	左中侧板/DF200SST-23	Left middle side panel	1	
14	03010678	右中侧板/DF200SST-23	R middle side panel; Right	1	
15	03010681	左后护板/DF200SST-23	Rear Guard Board,Left	1	
16	03010682	右后护板/DF200SST-23	Rear Guard Board,Right	1	
17	03010673	后中心护板/DF200SST-23	Rear center guard	1	
18	09050002	圆橙色反光片M5	Circular orange reflector M5	2	
19	09050003	圆红色反光片M5	Circular red reflector M5	2	
20	09050001	方反光片M5	Square reflector	1	

覆盖件2 Body Covering 2



序	件号	中文名称	英文名称	数量	单价
NO	Code name	Chinese	Description	Q'ty	
1	03030981	仪表底罩	Instrument bottom cover	1	
2	03030985	前底板上	Front floor panel	1	
3	03031060	跑车前下通风件	Front lower wind grid	1	
4	03030982-1	侧板左装饰网格	Side panel left decorative grid	1	
5	03030982-2	侧板右装饰网格	Side panel right decorative grid	1	
6	03031058	塑料水箱	Plastic water tank	1	
7	03030983	左油箱边条	Left fuel tank edge strip	1	
8	03030984	右油箱边条	Right fuel tank edge strip	1	
9	03031063	前左边条	Front edgings,left	1	
10	03031064	前右边条	Front edgings,right	1	
11	03030987-1	后底板(切割)	Rear floor panel	1	
12	03030986-1	左中装饰板	Left middle decorative panel	1	
13	03030986-2	右中装饰板	Right middle decorative panel	1	
14	03030990	后尾灯连接板	Connection plate,Rear tail light	1	
15	03030988	后挡泥板	Rear fender	1	
16	03031059	后轮挡泥板	Rear wheel fender	1	
17	03030991	后平叉塞	Cover ,rear fork	1	
18	03031061	后平叉塞	Cover ,rear fork	1	
19	03030992-1	后底板堵头1	Rear bottom plate plug 1	1	
20	03030992-2	后底板堵头2	Rear bottom plate plug 2	2	
21	09060031	后视镜	Rear mirrow	1	

坐垫和橡胶件 SEATER & RUBBER



序	件号	中文名称	英文名称	数量	单价
NO	Code name	Chinese	Description	Q'ty	
1	05010085-1	前座垫	Front seater	1	
2	05010085-2	后座垫	Rear seater	1	
3	06990101	电池绑带	Battery strap	1	
4	06990102	工具绑带	Tool strap	1	
5	06020199	油箱前固定橡胶件	Front rubber parts; fuel tank	2	
6	06020198	前大灯固定橡胶件	Rubber part;headlight	2	
7	06020200	油箱后固定橡胶件	Rear rubber parts; fuel tank	2	
8	06020201	方向把螺栓盖	Rubber cover,handle bar bolt	4	
9	06020197	护板橡胶垫	Rubber cover,	27	
10					
11					
12					
13					
14					
15					
16					
17					
18					
19					

