

VENOM GHOST 250CC

PARTS CATALOG

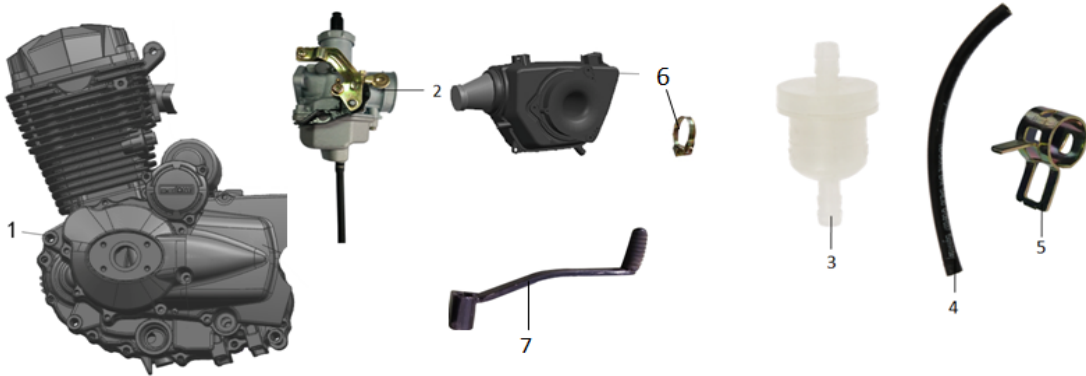


INTRODUCTION

When placing orders for parts, use this booklet as a reference. Refer to the illustrations for the name, item code, or fitment details by examining the size and appearance.

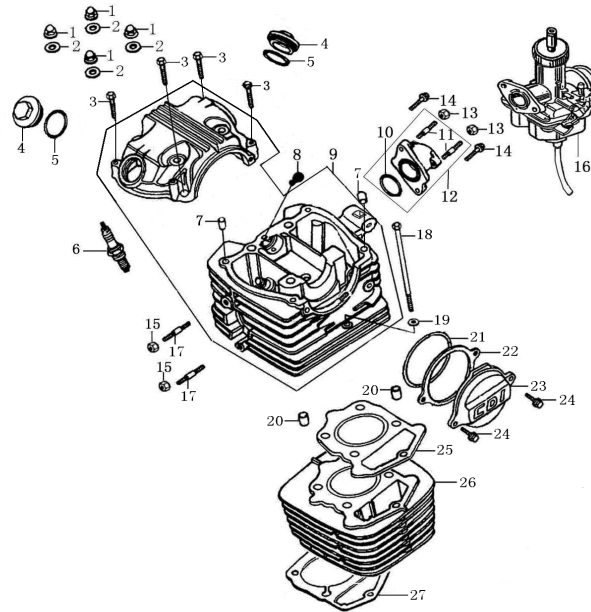
Locate the corresponding number in the illustration to identify the name, item code, and quantity. Please note that changes to the information in this booklet may occur without prior notice.

发动机 Engine



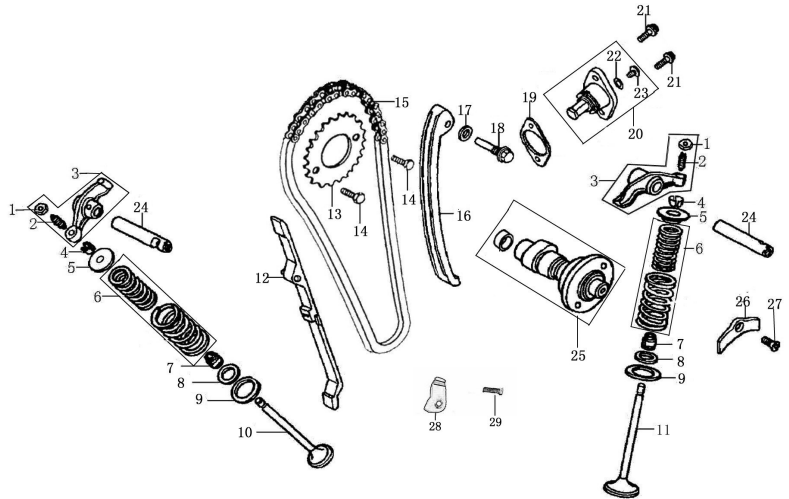
序	件 号		英 文 名 称	数量	单 价	
	Code	name			¥	\$
1	01010082		Engine	1		
2	01030008		Carburetor Assy	1		
3	06990001		Secondary Fiflter	1		
4	06030002		Gasoline Pipe	15CM		
5	12010007		Oil Tube Clip	4		
6	01040049		Air filter	1		
7	01020080		Gear shifter	1		

气缸头部件/气缸体部件Cylinder Head ASSY/Cylinder ASSY



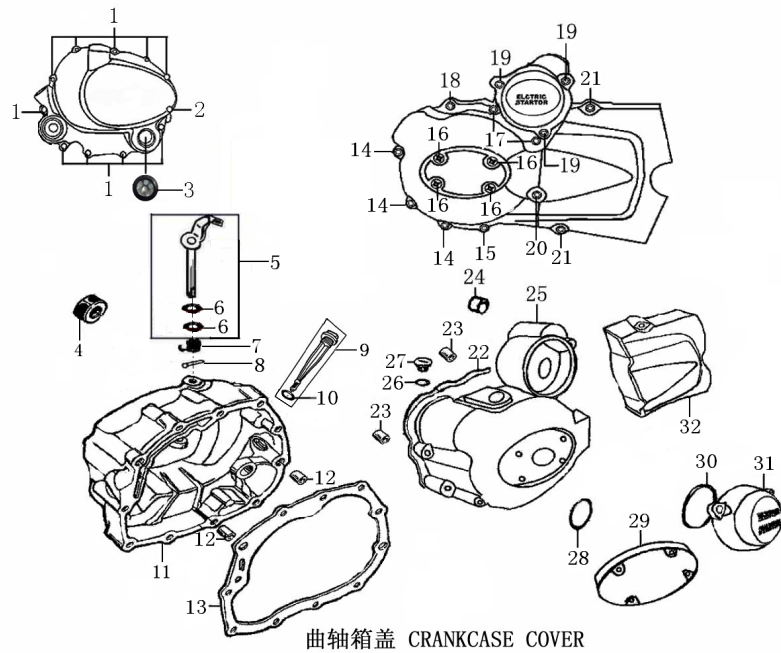
序 NO.	件号 Item Code	英文名称 Description	数量 Q'ty	单价	
				¥	\$
1	91201-I006-00000X	Cap Nut M8	4		
2	93301-80852018000	Cap Nut Copper Washer 8.5×2×18	4		
3	B166740A06003570X	Bolt M6×35	4		
4	11230-I006-00000G	Cover, Valve Chamber	2		
5	90101-20350000300	Valve Cover O-ring 35×3	2		
6	81300-I006-0000	Spark Plug	1		
7	91521-08001400000	Pin 8×14×6.3	2		
8	11015-I006-0000	Casing Cap	1		
9	1122B-ME05-000086	Cylinder Head Assy	1		
10	90101-20335000300	Inlet Pipe O-ring 33.5×3	1		
11	91127-I006-0000	Inlet Pipe Stud Bolt	2		
12	15800-L044-0041	Inlet Pipe Assy	1		
13	B061700006000090X	Nut M6	2		
14	B057830006002070X	Bolt M6×20	2		
15	B061700008000090X	Nut M8	2		
17	91138-I008-01000X	Stud Bolt M8×38	2		
18	B166740A06012570X	Bolt M6×125	1		
19	93301-3062201300B	Washer 6.2×2×13	1		
20	91521-10002000000	Pin 10×20	2		
21	90101-20750000265	Cylinder Head O-ring 75×2.65	1		
22	90202-I006-0000	Cylinder Head Gasket	1		
23	11227-I006-100186	Left Cover of Cylinder Head	1		
24	B166740A06002070X	Bolt M6×20	2		
25	9022B-ME05-0000	Cylinder Head Gasket Assy	1		
26	1110B-ME05-000086	Cylinder Block Assy	1		
27	90205-J025-0000	Cylinder Block Gasket Assy	1		

配气机构Camshaft & Valves



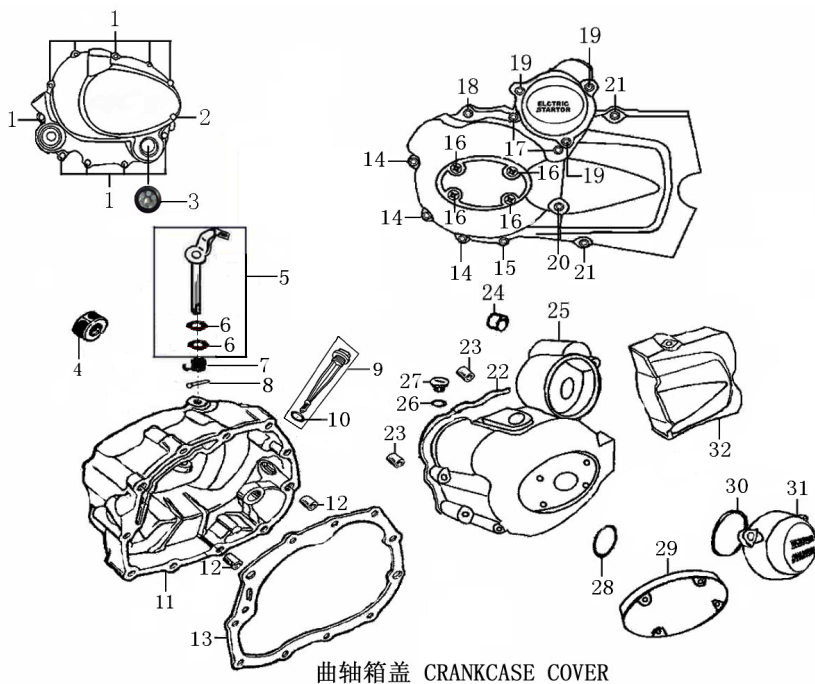
序	件号	英文名称	数量	单价	
NO.	Item Code	Description	Q'ty	¥	\$
1	15403-I006-0000	Nut, valve Clearance	2		
2	15404-I006-0000	Screw, Valve Clearance	2		
3	1540A-I006-0000	Rocker Arm ASSY, valve	2		
4	15707-I006-0000	Valve Locker	4		
5	15705-I006-0000	Spring Seat(upper)	2		
6	15710-I006-0000	Inner Out Spring Assy	2		
7	1572B-I008-0000	Seal, Valve Stem	2		
8	15708-I008-0000	Spring Seat(lower)	2		
9	15706-I008-0000	Spring Seat(lower)	2		
10	15702-LA74-0000	Exhaust Valve	1		
11	15701-LA74-0000	Intake Valve	1		
12	1553A-ME05-0000	Chain Guide Plate	1		
13	15301-L044-0000	Timing Driven Sprocket	1		
14	B057830006001270B	Bolt M6×12(white zinc)	2		
15	1532B-ME05-0000	Sprocket Chain	1		
16	1552A-ME05-0000	Tension Plate ASSY	1		
17	93301-70851514000	Washer 8.5×1.5×14	1		
18	91109-I006-00000X	Tensioner Axle Bolt	1		
19	90211-I049-0000	Tensioner Gasket	1		
20	1554B-I049-000086	Tensioner Assy	1		
21	B000700106001670X	Bolt M6×16	2		
22	90101-20090000180	Tensioner O-ring 9×1.8	1		
23	91120-I006-0000	Tensioner Bolt M6×10	1		
24	15402-I006-0100	Rocker Shaft	2		
25	15100-ME05-0003	CB250D-G Cam Shaft Assy	1		
26	11201-I006-0000	Rocker Arm Positioning Plate	1		
27	B008190106001620B	Screw M6×16	1		
28	2143B-L044-0000	Chain Protect Plate Assy	1		
29	B166740006001670B	Bolt M6×16	1		

曲轴箱盖 Crankcase Cover 1



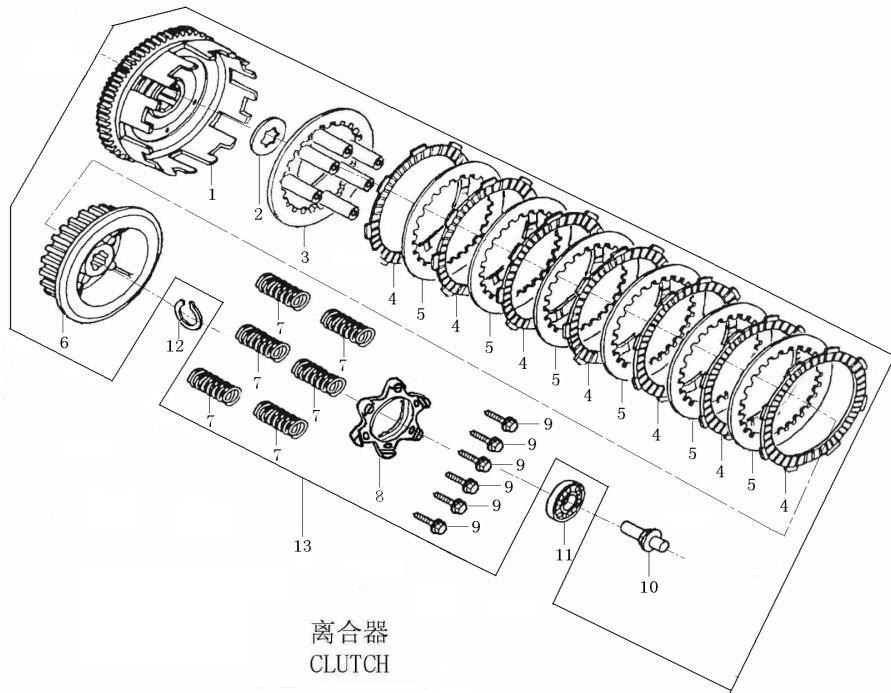
序 NO.	件号 Item Code	英文名称 Description	数量 Q'ty	单价	
				¥	\$
1	B166740A06004070X	Bolt M6×40	10		
2	B166740A06005070X	Bolt M6×50	1		
3	12426-I008-0000	Oil Lelve Sight Window	1		
4	90304-I006-0000	Oil Seal16×28×7	1		
5	2242A-IA18-01000F	Controlling Arm ASSY.Clutch	1		
6	90101-30087000190	O-ring 8.7×1.9	2		
7	22427-I006-0000	Clutch Controlling Arm Spring	1		
8	B0087901030120000	Pin 3×12	1		
9	14301-I006-01000G	Oil Gauge ASSY	1		
10	90101-10180000300	Oil Gauge O-ring 18×3	1		
11	12421-I008-660063	Cover COMP. Right Crankcase	1		
12	91521-08001400000	Pin 8×14×6.3	2		
13	90206-I008-0000	Gasket, R.Crankcase Cover	1		
14	B166740A06002570X	Bolt M6×25(blue white zinc)	3		
15	B166740A06003570X	Bolt M6×35(blue white zinc)	1		
16	B008180006001220X	Bolt M6×12(blue white zinc)	4		
17	B166740A06005570X	Bolt M6×55(blue white zinc)	2		
18	B166740A06003570X	Bolt M6×35(blue white zinc)	1		
19	B166740A06002070X	Bolt M6×20(blue white zinc)	3		
20	B166740A06006070X	Bolt M6×60(blue white zinc)	1		
21	B166740A06002870X	Bolt M6×28(blue white zinc)	2		
22	90204-I049-0000	Gasket, L.crankcase Cover	1		
23	91521-08001400000	Pin 8×14×6.3	2		
24	92102-I008-0001	Oil Bearing	1		

曲轴箱盖 Crankcase Cover 2



序 NO.	件号 Item Code	英文名称 Description	数量 Q'ty	单价 ¥ \$	
25	12301-I049-000063	Front part, L.Crankcase Cover	1		
26	90101-10132000265	Manhead O-ring 13.2×2.65	1		
27	12303-G011-00000G	Cap, Small View Hole	1		
28	90101-10274000265	O-ring 27.4×2.65	1		
29	12307-I008-10010G	Decoratecover L.Crankcase Cover	1		
30	90101-10630000265	O-ring 63×2.65	1		
31	12308-I049-01000G	Cover,Reduction Gear	1		
32	12302-I049-430063	Rear Part,L.Crankcase Cover	1		

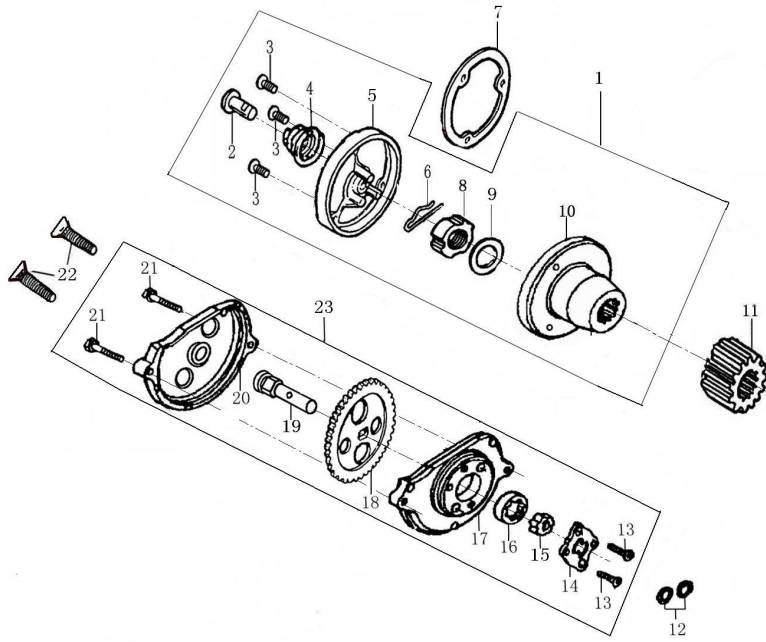
离合器总成 Clutch ASSY



离合器
CLUTCH

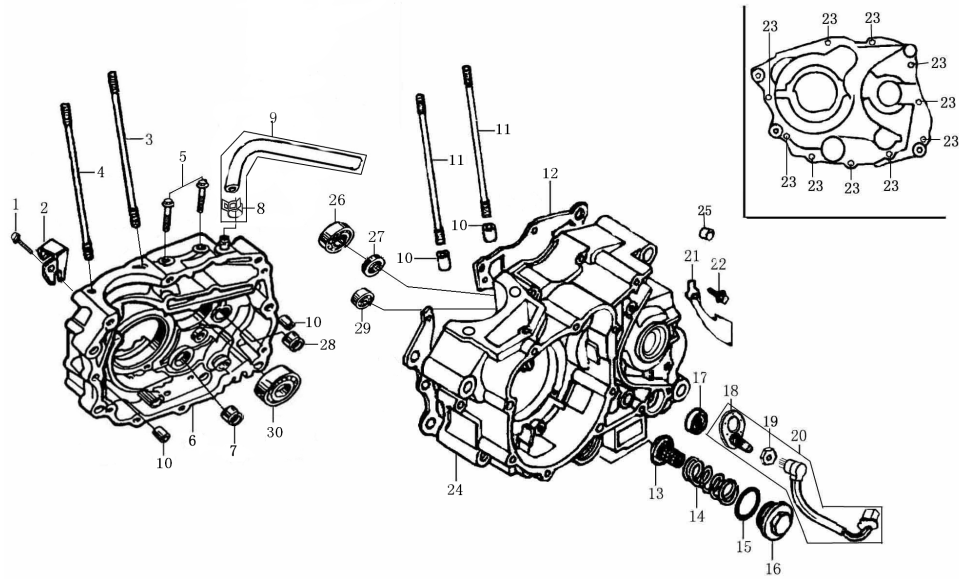
序 NO.	件号 Item Code	英文名称 Description	数量 Q'ty	单价	
				¥	\$
1	22150-LA73-0100	Out Case Cover, Clutch	1		
2	22002-I006-0000	Washer For Spline	1		
3	22122-LA73-0000	Pressure Board, Clutch	1		
4	22214-LA73-0000	Drive Friction Dies	7		
5	22215-J034-0000	Outer Friction Die A	6		
6	22105-LA73-0100	Central Sleeve, Clutch	1		
7	22142-LA73-0000	Clutch Spring	6		
8	22121-LA12-0000	Cluct End Cover	1		
9	91129-J034-00000B	Bolt M5×20	6		
10	22403-I006-0000	Pushing Rod, Clutch	1		
11	92102-00000016003	Bearing (16003)	1		
12	91403-I008-0000	Elastci Check Ring	1		
13	22000-LA73-0903	Clutch Assy(Without Bearing)	1		

机油泵部件/机油滤清器部件 Oil Pump/ Oil Filter



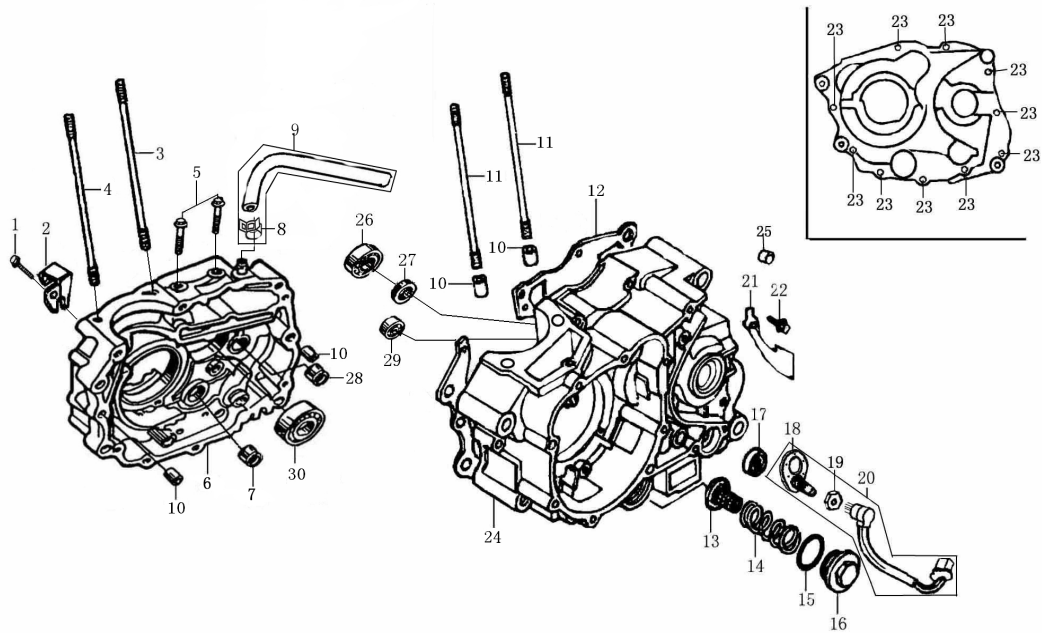
序	件号	英文名称	数量	单价	
NO.	Item Code	Description	Q'ty	¥	\$
1	14200-IA20-0100	Oil Filter	1		
2	14201-I006-0000	Oil Pipe	1		
3	B008190105001220B	Screw M5×12	3		
4	14202-I006-0000	Spring of Oil Pipe	1		
5	14207-IA20-00000W	Oli Filter Cover	1		
6	14208-I006-0000	Oli Filter Pin	1		
7	90209-IA20-0000	Gasket ,Oil Filter	1		
8	91203-IA20-0000	Oli Filter Nut	1		
9	22004-I006-0000	Dish Washer,Clutch	1		
10	14203-IA20-0100	Rotor Assy.of Oil Filter	1		
11	23101-I006-0000	Primary Drive Gear	1		
12	90101-10094000240	O-ring 9.4×2.4	2		
13	B008190104001020B	Screw M4×10	2		
14	14108-L044-0200	Oil Pump Cover	1		
15	14111-L044-0200	Inner Rotor, Oil Pump	1		
16	14112-L044-0000	Outer Rotor, Oil Pump	1		
17	14110-L044-0200	Oil Pump Body	1		
18	14102-L044-0001	Gear,Oil Pump	1		
19	14107-L044-0200	Shaft, Oil Pump	1		
20	14113-L044-0000	Gear Cover, Oil Pump	1		
21	B057820005002070B	Bolt M5×20	2		
22	B008190106003020B	Screw M6×30	2		
23	14100-L044-0000	Oil Pump Assy	1		

曲轴箱 Crankcase 1



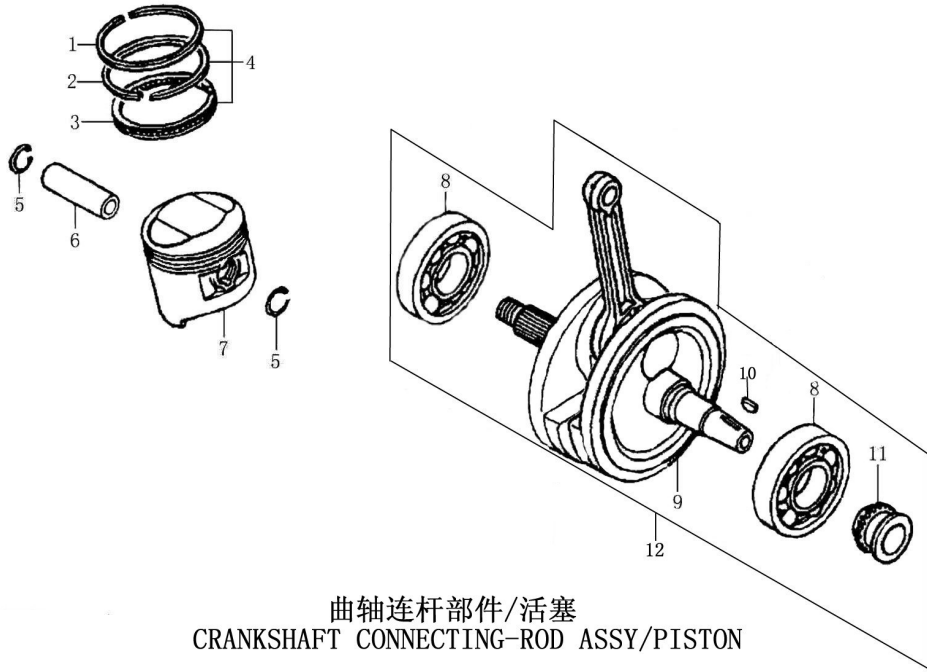
序 NO.	件号 Item Code	英文名称 Description	数量 Q' ty	单价	
				¥	\$
1	B166740A06005570X	Bolt M6×55	1		
2	22422-IA18-01000G	Clutch Cable Holder	1		
3	91102-L044-0000	Cylinder Stud Bolt B	1		
4	91102-L044-0100	Cylinder Stud Bolt B	1		
5	B166740A06002870X	Bolt M6×28	2		
6	1222B-ME05-010063	Right Crankcase Assy	1		
7	92102-000HK212810	Bearing (HK212810)	1		
8	18097-I008-0000	Clamp	3		
9	12130-MA95-0200	Pipe ASSY	1		
10	91521-10001400000	Pin 10×14	4		
11	91101-KA35-0000	Cylinder Stud Bolt A(240mm)	2		
12	90208-ME05-0000	Crankcase Gasket	1		
13	1431B-I006-0000	Oil Filter Strainer	1		
14	14221-I006-0000	Spring of Oil Filter Strainer	1		
15	90101-20350000300	O-ring 35×3	1		
16	11230-I006-00000W	Cover, Valve Chamber	1		
17	90301-I006-0000	Oil Seal 14×28×7	1		
18	88001-I049-0500	Gearshift Switch plate	1		
19	91204-I049-0000	Nut M10	1		
20	8803B-I049-050055	Gearshift Switch Lamp	1		
21	12103-I008-0000	Positioning Plate	1		
22	B166740A06001270B	Bolt M6×12	1		
23	B166740A06005070X	Bolt M6×50	10		
24	1212B-IA27-000063	Left Crankcase Assy	1		

曲轴箱 Crankcase 2



序 NO.	件号 Item Code	英文名称 Description	数量 Q' ty	单价 ¥ \$	
25	92102-I008-0001	Bearing	1		
26	92102-00000006204	Bearing (6204)	1		
27	90303-I006-0000	Oil Seal 20×34×7	1		
28	92102-000NK152312	Bearing (NK15×23×12)	1		
29	92102-0000TM6202Z	BearingG (TM6202Z)	1		
30	92102-00000006006	Bearing (6006)	1		

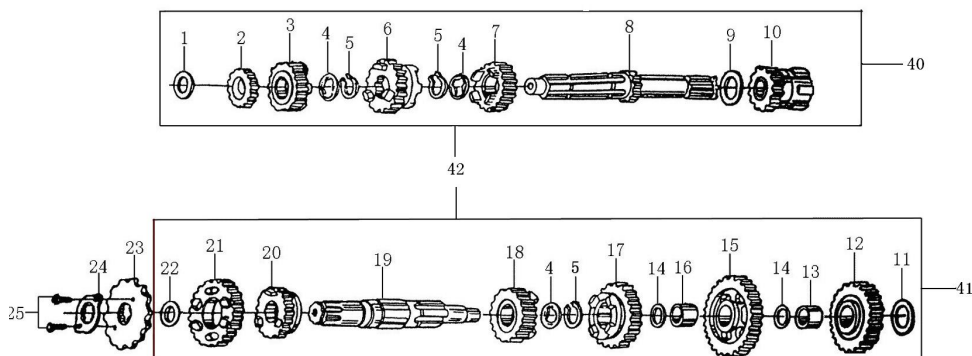
曲轴连杆部件/活塞 Crankcase Connecting Rod ASSY/Piston



曲轴连杆部件/活塞
CRANKSHAFT CONNECTING-ROD ASSY/PISTON

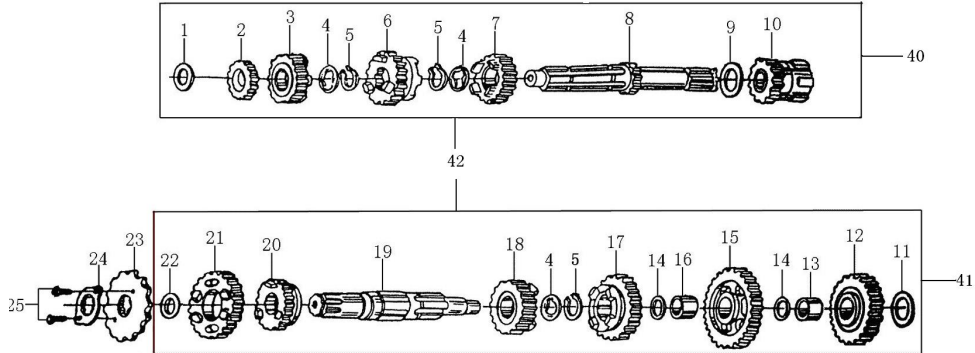
序 NO.	件号 Item Code	英文名称 Description	数量 Q'ty	单价	
				¥	\$
1	13103-ME05-0000	Piston Ring 1	1		
2	13104-ME05-0000	Piston Ring 1	1		
3	13120-ME05-0000	Oil Ring ASSY	1		
4	1310A-ME05-0100	Pistonring ASSY	1		
5	91401-I006-0000	Check, Piston Pin	2		
6	13102-LA66-0000	Pin Piston	1		
7	13101-LE26-0000	Piston	1		
8	92102-00TMS06B42	Bearing (TM-SC06B42)	2		
9	13220-ME05-0000	Connection Rod Comp 3	1		
10	91601-I008-0000	Woodruff Key	1		
11	13222-ME05-0000	Drive Sprocket	1		
12	1320B-ME05-0000	Crankshaft Connection Rod Assy	1		

传动机构 Transmission Mechanism 1



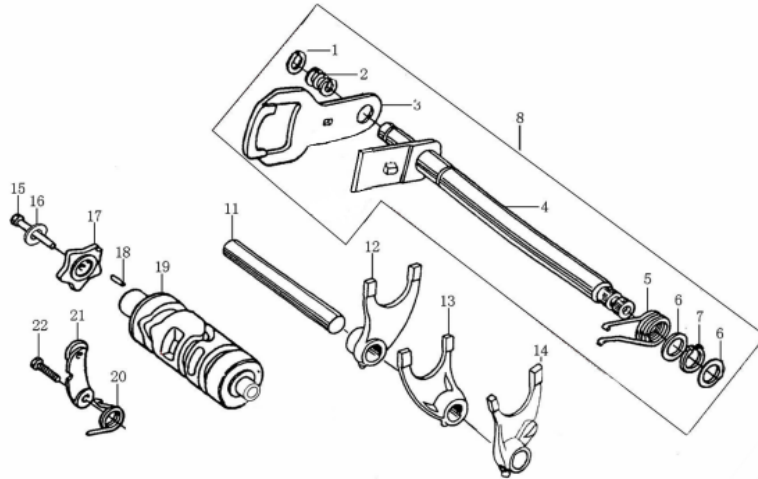
序 NO.	件号 Item Code	英文名称 Description	数量 Q'ty	单价	
				¥	\$
1	93301-61521025000	Washer 15.2×1×25	1		
2	23222-LA73-0002	Gear M-2	1		
3	23222-LA73-0005	Gear M-5	1		
4	23223-I006-0000	Washer 17.3(20)×1.6×26	3		
5	91402-D002-0100	Start Axle Check Ring $\phi 18.5 \times 1.2 \times \phi 22.1$	3		
6	23222-LA73-0004	Gear M-4	1		
7	23222-LA73-0003	Gear M-3	1		
8	23221-LA73-0000	Transmission Main Shaft	1		
9	93301-62020527000	Washer 20.2×0.5×27	1		
10	23231-I008-0000	Final Shaft	1		
11	93301-61521030000	Washer 15.2×1×30	1		
12	23248-I008-0000	Gear	1		
13	23203-I008-0003	Gear Bush	1		
14	93301-51650524000	Washer 16.5×0.5×24	2		
15	23242-LA73-0001	Gear C-1	1		
16	23203-I006-0001	Gear Bush	1		
17	23242-LA73-0003	Gear C-3	1		
18	23242-LA73-0004	Gear C-4	1		
19	23241-I008-0000	Transmission Counter Shaft	1		
20	23242-LA73-0005	Gear C-5	1		
21	23242-LA73-0002	Gear C-2	1		
22	93301-52001027000	Washer 20×1×27	1		
23	23401-MA95-0001	Drive Sprocket(520.13)	1		
24	23402-I006-0000	Fixing Plate, Drive Sprocket	1		

传动机构 Transmission Mechanism 2



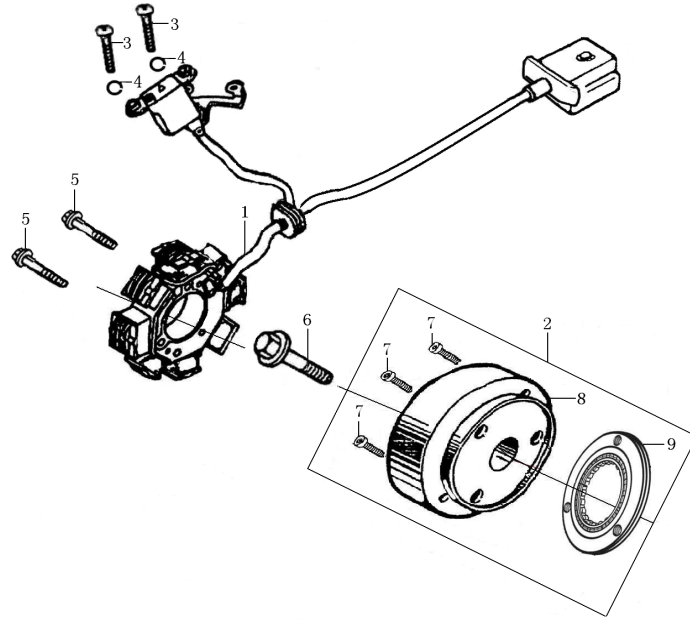
序	件号	英文名称	数量	单价	
NO.	Item Code	Description	Q' ty	¥	\$
25	B057830006001070B	Bolt M6×10	2		
26					
27					
28					
29					
30					
31					
32					
33					
34					
35					
36					
37					
38					
39					
40	23220-LA73-0000	Tansmmison Main Shaft	1		
41	23240-LA73-0000	Transmmison Counter Shaft	1		
42	23200-LA73-0200	Tansmmison Shaft ASSY	1		

变速机构 Gearshift Mechanism



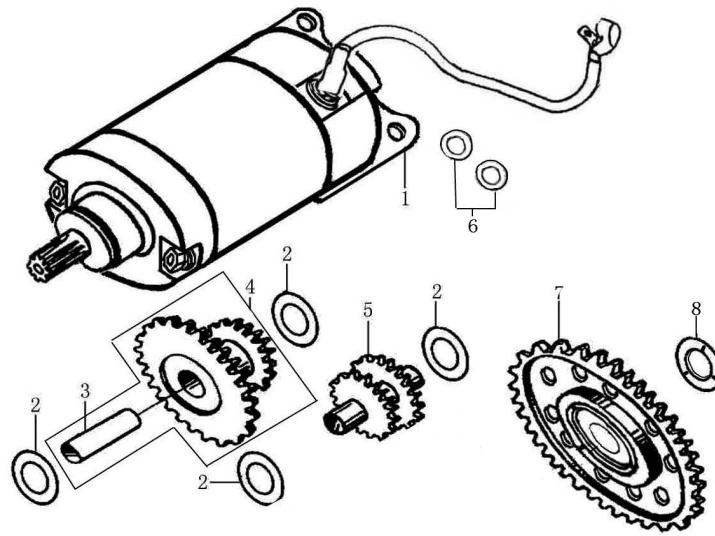
序 NO.	件号 Item Code	英文名称 Description	数量 Q' ty	单价	
				¥	\$
1	B0089401120000000	Circlip 12	1		
2	24303-I006-0000	Gearshift Plate Spring	1		
3	24319-I006-0000	Gearshift Plate	1		
4	24301-I006-00000C	Gearshift Shaft ASSY	1		
5	24302-I008-0000	Return Spring	1		
6	93301-51400520000	Washer 14×0.5×20	2		
7	B0089401140000000	CirClip 14	1		
8	24300-I006-00000C	Gearshift Lever ASSY	1		
9					
10					
11	24107-I006-0000	Gearshift Spork Shaft	1		
12	24104-I006-0000	Right Fork, Countershaft	1		
13	24106-I006-0000	Center Fork, Mainshaft	1		
14	24105-I006-0000	Left Fork, Countershaft	1		
15	91126-I008-00000B	Bolt	1		
16	B0009300060000000	Washer φ6	1		
17	24202-I006-0500	Stopping Plate	1		
18	B0011901040100000	Pin 4×10	1		
19	24213-I006-0500	Gearshift Drum	1		
20	24304-I006-0000	Spring, Locating Plate	1		
21	2434A-I008-0000	Locating Plate ASSY	1		
22	B057830006002070B	Bolt M6×20	1		

磁电机总成 Magneto ASSY



序 NO.	件号 Item Code	英文名称 Description	数量 Q' ty	单价	
				¥	\$
1	82120-IA27-000160	Stator ASSY, Magneto	1		
2	82130-IA27-0200	Rotor ASSY, Magneto	1		
3	B008230004001020B	Screw M4×10	2		
4	B0009300040000000	Washer φ4	2		
5	B166740A06002870B	Bolt M6×28(white zinc)	2		
6	91106-I008-0000	Magneto Mounting Bolt M10×36	1		
7	91197-I008-00000C	Overrunning Bolt M8×18(color zinc)	3		
8	82130-I049-0301	Rotor ASSY, Magneto	1		
9	21300-LA73-0000	Overrunning Clutch Assy	1		

电启动机构 Electrical Starter



电启动机构
ELECTRIC STARTING MECHANISM

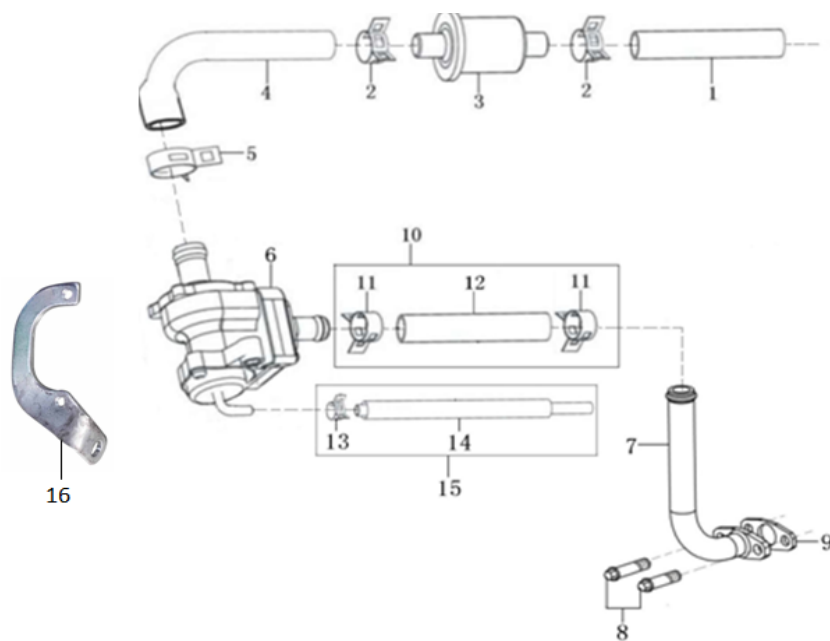
序 NO.	件号 Item Code	英文名称 Description	数量 Q'ty	单价 Price	
				¥	\$
1	82200-ME05-020280	Starting Motor ASSY	1		
2	93301-51050518000	Washer 10.5×0.5×18	4		
3	21402-I049-0000	Shaft, Reduction	1		
4	2140A-L044-0100	Gear, Reduction, 1	1		
5	21401-L044-0000	Gear, Reduction, 2	1		
6	82202-ME05-0000	CB250D-G Electric Machine Mounting Base Washer	2		
7	2142A-IA27-0000	CB133 Plate Gear ASSY	1		
8	93301-E2203534000	CB125D-2#Disk Washer 22×3.5×34	1		

电器 Electric Components



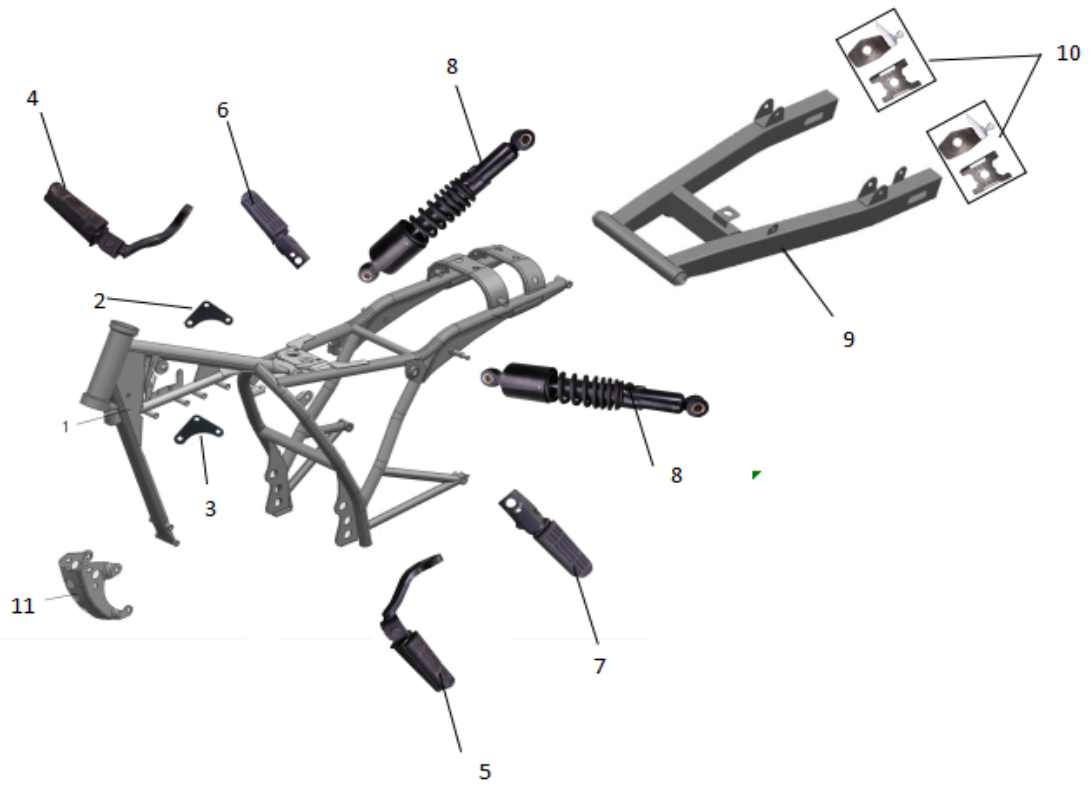
序	件号	英文名称	数量	单价	
NO.	Code name	Description	Q'ty	¥	\$
1	01020028	Ignition Coil	1		
2	01020024	C.D.I	1		
3	01020025	Rectifier	1		
4	01020027	Relay	1		
5	01020011	Flasher	1		
6	01020075	Headlight controller	1		
7	10070001	Horn	1		
8	10080063	Key Switch	1		

二次进气系统 Second Inlet System (0072501101)



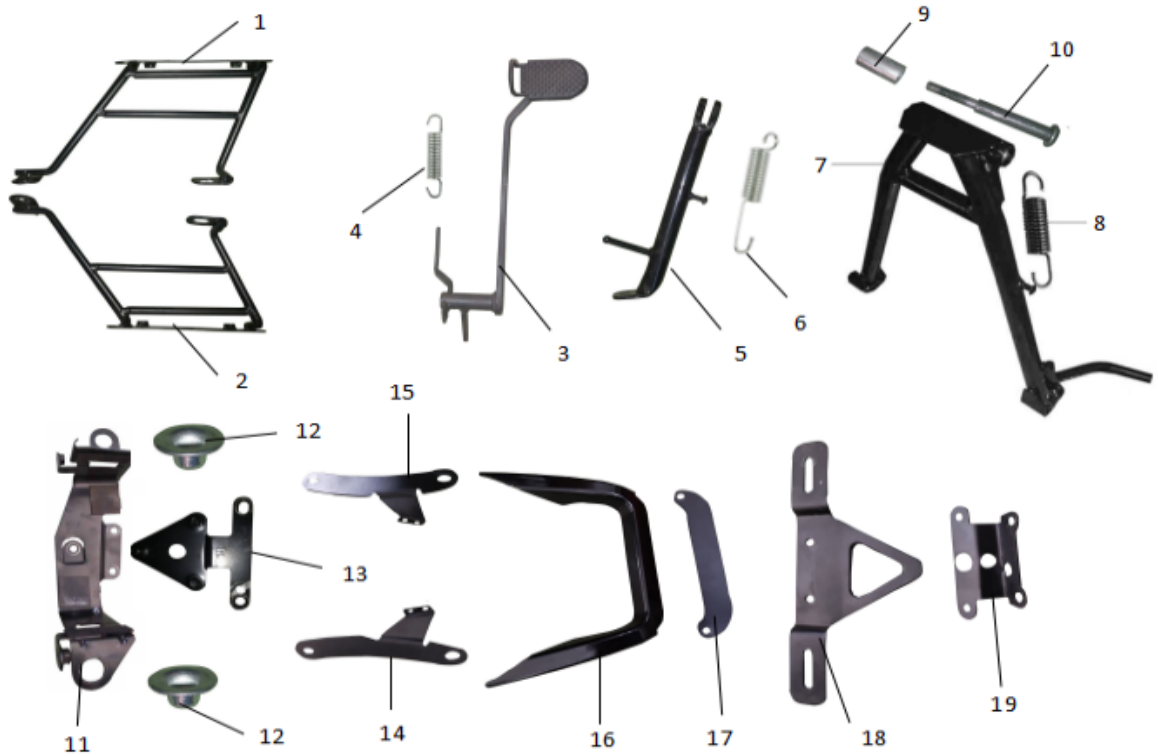
序	件号 Code name	英文名称 Description	数量 Q'ty	单价	
				¥	\$
1	16156-I008-0100	Connecting Pipe	1		
2	16157-I008-0000	Hoop	2		
3	16160-I008-0000	Second Air Box Valve	1		
4	16156-I008-0000	Connection Pipe	1		
5	16157-I008-0100	Hoop	1		
6	18090-J034-0001	Gas Pump	1		
7	1809B-LA66-00000Y	Iron Pipe	1		
8	B166740A06001670X	Bolt M6X16	2		
9	90268-DA80-0000	Paper Gasket	1		
10	18110-LA66-0000	Rubber Pipe	1		
11	18097-I008-0000	Clamp	2		
12	18092-LA66-0000	Rubber Pipe	1		
13	18097-I008-0100	Clamp	1		
14	18092-I008-0103	Rubber Pipe	1		
15	18110-I008-0103	Rubber Pipe	1		
16	02010351-2	Bracket of Air	1		

车架及后平叉 Frame and Rear fork



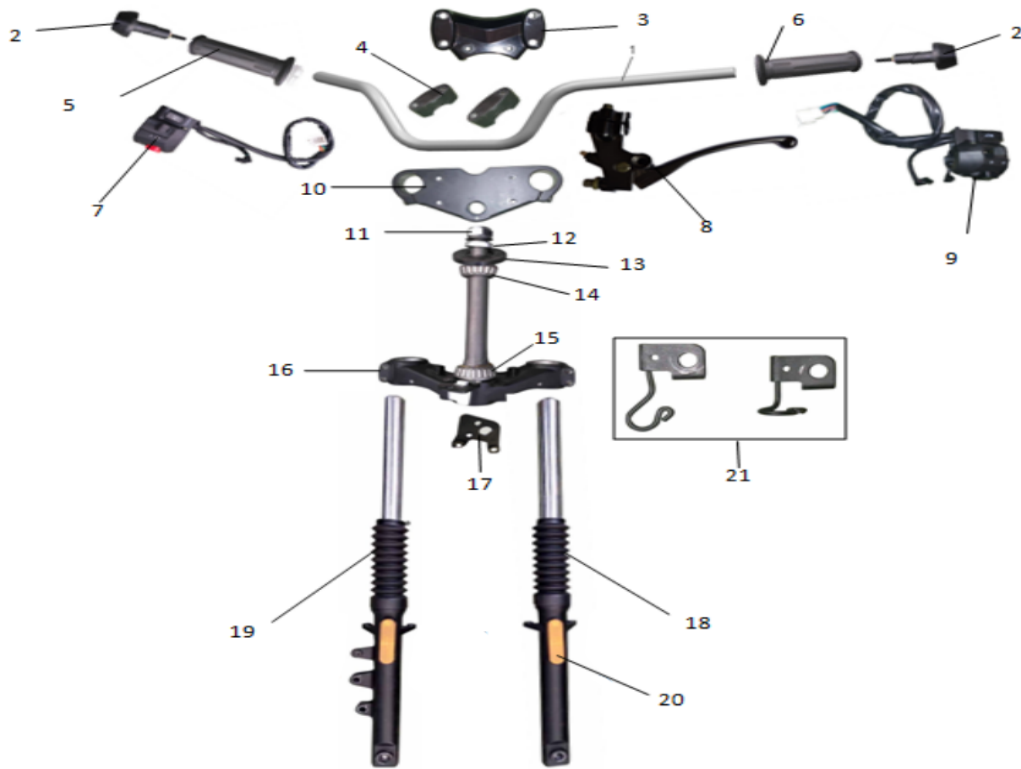
序 NO.	件号 Item Code	英文名称 Description	数量 Q'ty	单价 Unit Price	
				¥	\$
1	0201-250RTB-20	Frrame	1		
2	02012030	Upper engine hanger	1		
3	02012031	Lower engine hanger	1		
4	02050069-2	Front footrest ASSY right	1		
5	02020069-1	Front footrest ASSY left	1		
6	02050070-2	Rear footrest ASSY right	1		
7	02050070-1	Rear footrest ASSY left	1		
8	07010184	Shock absorber	2		
9	02012007	Rera fork	1		
10	02012024	Chain tension	2		
11	02012029	Front engine hanger	1		

车架件 Accessories of frame



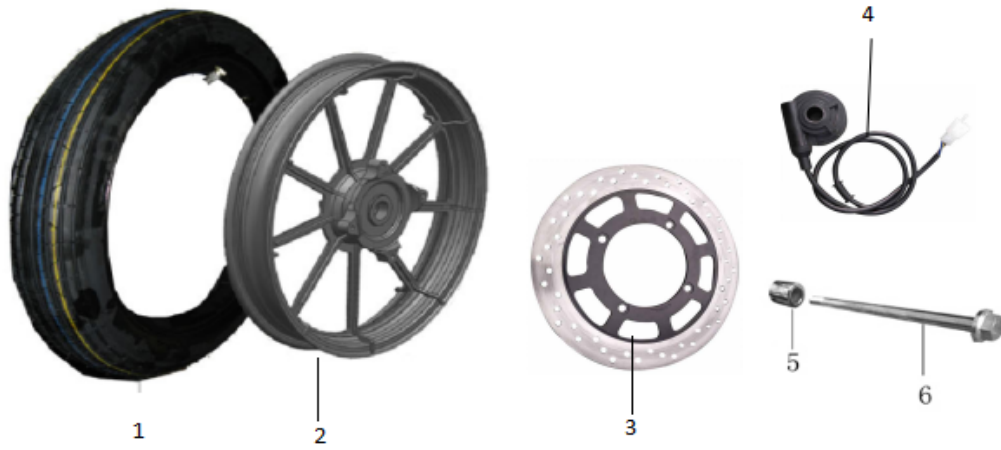
序	件号	英文名称	数量	单价	
NO.	Item Code	Description	Q'ty	¥	\$
1	02012019	Bracket of right engine cover	1		
2	02012018	Bracket of left engine cover	1		
3	02012010	Rear brake pedal	1		
4	07020128	Spring of rear brake pedal	1		
5	02012009	Side stand	1		
6	07020127	Spring of side stand	1		
7	02012008	Main stand	1		
8	07020126	Spring of main stand	1		
9	02012011	Bushing of brake pedal	1		
10	02012012	Bushing axle of brake pedal	1		
11	02012023	Bracket of battery	1		
12	02012020	Bushing of battery bracket	2		
13	02012063	Bracket of rectifier	1		
14	02012016	Left bracket of handhold	1		
15	02012015	Right bracket of handhold	1		
16	02012025	Rear handhold	1		
17	02012032	Bracket of tail light	1		
18	02012021	Bracket of license	1		
19	02012022	Bracket of license light	1		

操纵系统 Steering ASSY



序	件号	英文名称	数量	单价	
NO.	Item Code	Description	Q'ty	¥	\$
1	02030797	Handle bar	1		
2	10020082	Handlebar end	2		
3	02030793	Up Handlebar lock	1		
4	02030795	Lower handlebar lock	2		
5	10020081-2	Right handlebar grip	1		
6	10020081-1	Left handlebar grip	1		
7	10010128	Right switch ASSY	1		
8	10030022	Left lever	1		
9	10010127	Left switch ASSY	1		
10	02030794	Upper shock linker	1		
11	12030068-6	Upper bearing	1		
12	12030068-3	Nut of steering stem	1		
13	12030068-2	Fixing nut	1		
14	12030068-1	Dust cover	1		
15	12030068-7	Lower bearing	1		
16	02030796	Steering stem	1		
17	02012017	Plate of lock	1		
18	07010183	Front shock left	1		
19	07010184	Front shock right	1		
20	09050006	Orange reflector	2		
21	12990044	Circlip of speedcable	2		

前轮胎、轮毂 Front wheel



序 NO.	件号 Item Code	英文名称 Description	数量 Q'ty	单价	
				¥	\$
1	06010103	Front tire 100/90-16	1		
2	02040400	Front rim 2.15-16	1		
3	04020064	Front brake disc	1		
4	10040095	Speed counter	1		
5	02012026	Front axle	1		
6	15010053	Bushing of front axle	1		

后轮胎、轮毂 Rear wheel



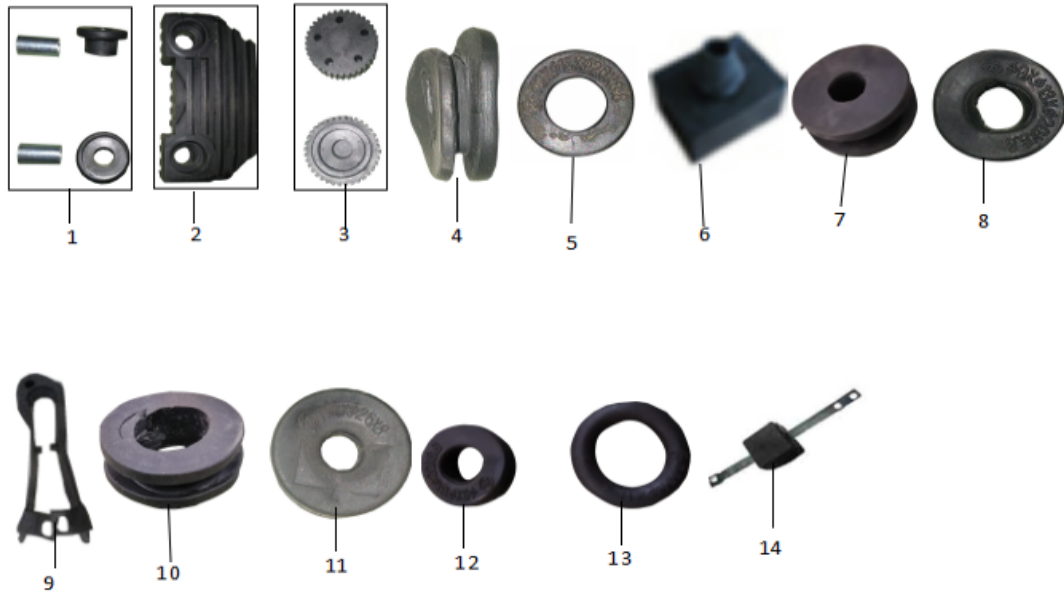
序	件号	英文名称	数量	单价	
NO.	Item Code	Description	Q'ty	¥	\$
1	06010104	Rear tire 130/90-15	1		
2	02040401	Rear rim	1		
3	02012028	Right bushing for rear axle	1		
4	04020065	Rear brake disc	1		
5	15010053	Rear axle M15*1.25*215	1		
6	02040402	Sprocket	1		
7	02012027	Bushing of rear axle	1		
8		Circlip 58	1		
9		Valve	1		
10	02040403	Chain 428H-128L	1		

碟刹、消声器Front Brake 、Muffler



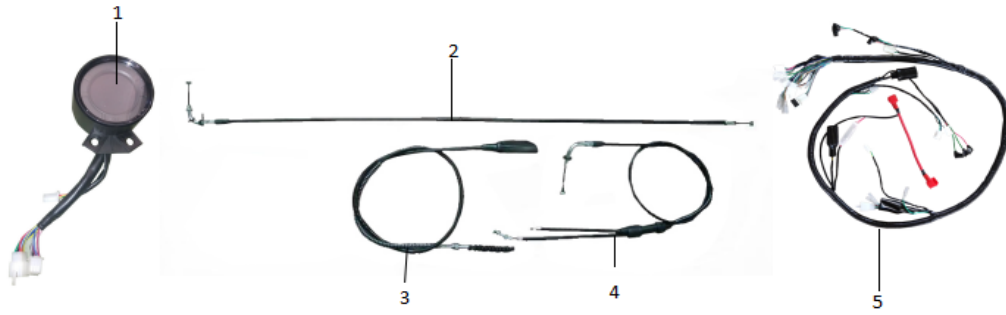
序 NO.	件号 Item Code	英文名称 Description	数量 Q'ty	单价 ¥	单价 \$
1	04010122	Front Disc Brake ASSY	1		
2	04010123	Rear brake ASSY	1		
3	04990013	Rear brake connection plate	1		
4	01050087	Muffler	1		

橡胶品 Rubber Accessories



序 NO.	件号 Item Code	英文名称 Description	数量 Q' ty	单价 Price	
				¥	\$
1	06020176-1	Bottum rubber A of Gas tank	2		
2	06020176-2	Bottum rubber B of Gas tank	1		
3	06020176-3	Fixing rubber of gas tank	2		
4	06020176-7	Rubber A of left cover	1		
5	06020176-8	Rubber of chain cover	1		
6	06020176-12	shock absorber rubber	1		
7	06020176-9	Rubber of battery bracket	3		
8	06020176-				
9	06020176-4	Upper rubber of rear fork	1		
10	06020176-16	Rubber of fender	4		
11	06020176-6	Rubber A for left side	5		
12	06020176-				
13	06020176-13	Rubber of rear fender	1		
14	06020176-5	Rubber of chain	1		

仪表、管线 Wires and Cable



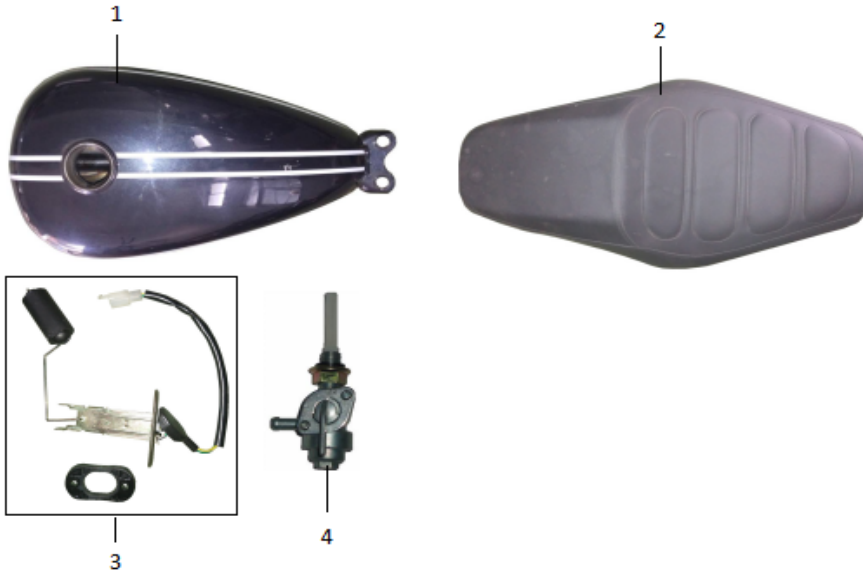
序	件号		英文名称	数量	单价	
NO.	Item Code		Description	Q' ty	¥	\$
1	10050089		Speedmeter	1		
2	08020301		Choke cable	1		
3	08020300		Gear cable	1		
4	08020299		Throttle cable	1		
5	08010147		Wire harness	1		

覆盖件 Body cover



序	件号	英文名称	数量	单价	
NO.	Item Code	Description	Q' ty	¥	\$
1	03010700	Front fender	1		
2	02012014	Bracket of front fender	1		
3	03031011	Cable cover left	1		
4	03031007	Headlight cover	1		
5	03031010	Cable cover right	1		
6	03031074	Engine top cover	2		
7	03031012	Chain cover	1		
8	03010698	Left cover	1		
9	03010699	Right cover	1		
10	03031013	Cover of glove box	1		
11	03010700	Front fender	1		
12	03031014	Battery cover	1		
13	03031009	Front of rear fender	1		
14	03031019	Decorate cover of rear fender left	1		
15	03010710	Rear fender	1		
16	03031018	Decorate cover of rear fender right	1		

油箱、坐垫 Gas Tanl & seat



序 NO.	件号 Item Code	英文名称 Description	数量 Q' ty	单价 Unit Price	
				¥	\$
1	05030080	Fuel Tank	1		
2	05010089	Seater	1		
3	10040094	Gas sensor	1		
4	10060005	Gas switch	1		

工具包 Tool Kit



序 NO.	件号 Item Code	英文名称 Description	数量 Q' ty	单价 ¥ \$	
1	16010005	Open Spanner(12-14)	1		
2	16010004	Open Spanner (8-10)	1		
3	16010006	Dual-purpose Screwdriver	1		
4	16010008	Spark Plug Box Spanner (S=18)	1		
5	16010002	Socket Head Screw Wrench(6mm)	1		
6	10990074	Battery	1		