



# FLOWER DESIGN GUIDE

Creating Beautiful Flowers with  
ENCO Meringue



# Index

Introduction .....1



General Flowers .....2

Ribbon Rose

Sunflower

Ranunculus

Tulip

Scabiosa

Caranation

Forget-Me-Not

Dual-Colored Piping Bag



Valentine's Day Flowers .....4

Traditional Rose

English Rose

Peony

Lily



Autumn Flowers .....5

Marigold

Gerbera Daisy

Dahlia

Autumn Leaves



Christmas Flowers .....6

Poinsettia

Mistletoe

Pine Cone

Branch



Flower Arrangements.....7

Complement your Flower Decorations

Flower Inspiration



Flowers are a timeless favorite in pastry decoration. In this guide, you'll find step-by-step instructions for crafting stunning floral designs, along with expert tips and inspiration to perfect each one.

## ENCO Meringue Powder Your Trusted Ally!

Perfect for making Italian Meringue, which has a unique consistency that makes it ideal for flower designs, due to its firmness and excellent heat resistance.



4.4 lb



8.8 oz

## Materials You'll Need



2" Pastry Nail



Tips #127, #104, #69, #16, #401, #2



ENCO Italian Meringue



Pastry Scissors



Piping bags



ENCO Food Coloring Gels



## Ribbon Rose



#104, #123 or #127

ENCO Color: Purple



Create a wide base with 3 flat circles.



With the wide end of the piping tip facing down, create a spiral at a 90° angle.



Continue to circle around with the same motion.



Repeat the previous step until the entire rose is complete.

## Sunflower



#16 and #69

ENCO Colors: Lemon Yellow and Dark Brown



Create a wide base, approx 0.6 in height, without using a piping tip.



Fill the center of the base using piping tip #16.



With piping tip #69, create long petals all around.



Using the same piping tip (#69), surround the center with smaller petals.



## Ranunculus



#104 or #127

ENCO Colors: Avocado and Sweet Peach



Create a wide base with 3 flat circles.



Add a second layer with 3 smaller flat circles.



Form 4 or 5 tightly closed petals in the center, shaping them in an arch.



Using another color, create a layer of closed petals in an arch shape, leaving the center visible.



Repeat until the entire flower is complete.

## Tulip



#104 or #127

ENCO Colors: Lemon Yellow and Orange



Create a wide base with 3 flat circles.



Using piping tip #2, create about 8 tall peaks in the center of the base.



Make 3 closed petals in an arch shape, leaving the center slightly exposed.



Add a second layer of closed petals in an arch shape.



Create a third layer of straight petals to finish.



## Escambiosa



#104 or #127 and #2

ENCO Color: Orange



Create a wide base with 3 flat circles.



Follow with a layer of petals around the edge of the base, with the narrow tip facing outward.



Add a second layer of smaller petals on the inside.



Using piping tip #2, make small dots in the center to finish.



## Carnation



#104 or #127

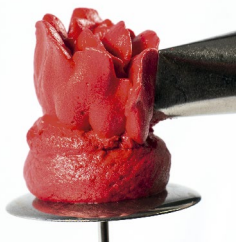
ENCO Color: Super Red



Create a wide base, approximately 0.6 in height, with or without a piping tip.



Make a vertical line in the center and surround it with a circle.



Move the piping bag up and down to form a layer of petals.



Continue moving downward and create more layers by repeating the motion until the entire flower is complete.



## Forget-Me-Not

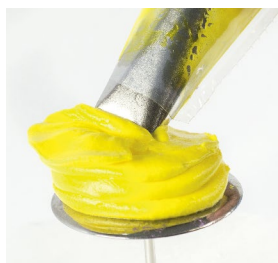


#127 and #2

ENCO Colors: Lemon Yellow and Orange



Create a wide base with 3 flat circles.



With the wide end in the center, rotate the nail and gently press outward, then return to the center. Repeat this motion 4 times, lifting the piping bag slightly on the last rotation and finishing in the center.



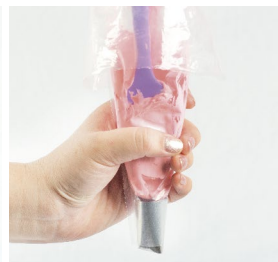
Using piping tip #2, make small dots in the center to finish.



## Dual-Colored Piping Bags



Cover the walls of a piping bag with a thin layer of pink frosting.



Make sure to leave the center of the piping bag free.



Use a different color frosting to fill the center. Make sure not to mix the two colors.



Get an incredible blended effect, perfect for any flower.

## Traditional Rose #104 or #127

ENCO Color: Bright Pink



Create a thin base, approx. 1.5in high, without using a piping tip.



With the wide end of the piping tip facing down, create a peaked spiral.



Form 3 closed, arch-shaped petals.



Continue with a second layer of 5 petals, making sure they're slightly more open.



Repeat until the entire rose is complete.

## English Rose #104 or #127

ENCO Color: Bubblegum Pink



Create a wide base using 3 flat circles.



Form a five-pointed star in the center.



Surround the points of the star with 2 rotations.



With the wide end of the piping tip facing down, create a layer of open petals in an arch shape.



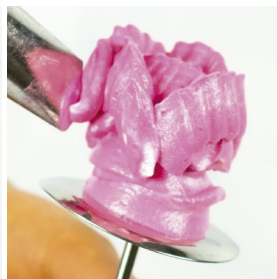
Repeat until the entire rose is complete.

## Peony #104 or #127

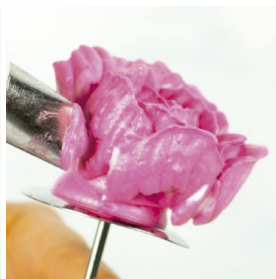
ENCO Color: Bright Pink



Form a wide base of approximately 0.6 in by rotating the nail.



Using piping tip #104, create 3 closed petals in an arch shape.



Continue forming layers of 3 closed petals in an arch shape.



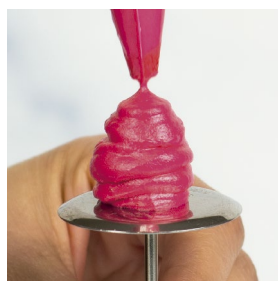
Create a layer of petals inside the previous ones.



Repeat until the flower looks full.

## Lily #104 or #127

ENCO Colors: Neon Green and Neon Pink



Create a wide pink base of approx. 0.6in high, with or without a piping tip.



Form petals around the base, working from bottom to top.



Continue this motion until the entire base is covered.



Using frosting in the shade Neon Green, add stems to complete the flower.





## Marigold



#104 or #127

ENCO Color: Orange



Make a wide base with 3 flat circles.



With the wide end of tip #104 facing down, make a zigzag circle.



Add 2 more circles in a zigzag shape.



Repeat the movement in the center of the flower.



## Gerbera Daisy



#104 and #81

ENCO Colors: Super Red and Super Black



Make a wide base with 3 flat circles.



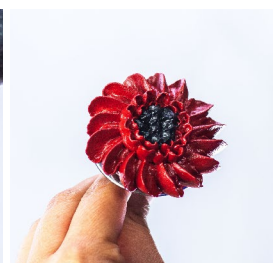
Using tip #104, form an arch from center to edge. Rotate the nail, press gently, and return to center. Repeat 13 times.



In the middle, make two circles of 24 petals with tip #81. Leave a space in the center.



With tip #14, make small dots in the middle to finish.



## Dahlia



#81 and Coupler

ENCO Colors: Avocado and Creamy Ivory



Start with a thin base of approx. 1.5 in tall, with or without a tip.



Make 9 small petals at the tip, pulling the bag inward in one motion.



Make more petals that face outward around the base. Make them longer as you go out.

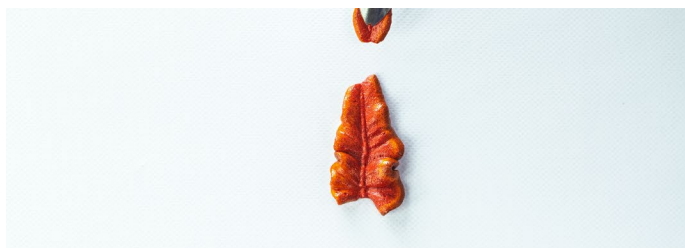


## Autumn Leaves

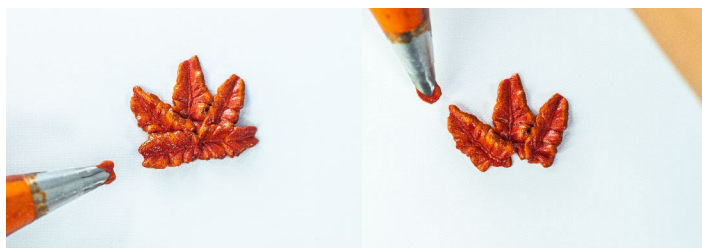


#67

Multicolor sleeve: Orange and Dark Brown



With tip #67, make zigzag movements upwards, gently releasing the bag to close the leaf, and then proceed to create the side leaves.



Repeat this same step on the sides.

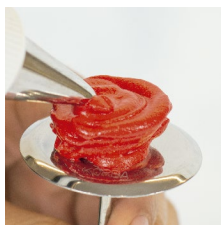


## Poinsettia

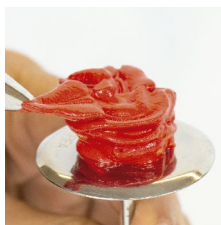


#104 or #127

ENCO Colors: Super Red and Leaf Green



Begin with a wide base using 3 flat circles made with piping tip #66.



Create 6 large petals around the base using piping tip #66.



Add a second layer of 6 smaller petals.



Finish with a third layer of 4 petals.

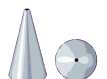


Add small Yellow dots using tip #1.



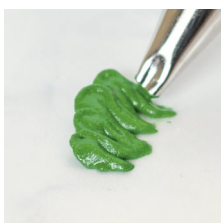
Surround the flower with leaves made using piping tip #66.

## Mistletoe

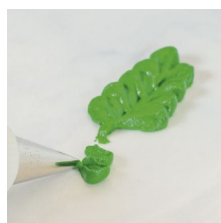


#104 or #127

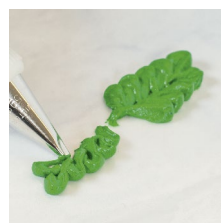
ENCO Colors: Super Red and Leaf Green



Use piping tip #59 to create outward-facing arches from bottom to top.



Repeat on the other side, with the arches facing the opposite way.



Create a second leaf using the same method.



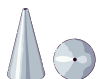
Berries: Use piping tip #9 to create triangular-shaped spheres.



Repeat until you have 3 spheres.



## Pine Cone

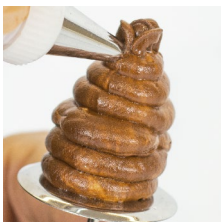


#59s

ENCO Colors: Dark Brown



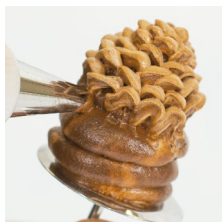
Make a thick base of approximately 2 inches using piping tip #59 or #61.



Create a straight line in the center and surround it with 3 petals, with the thin end facing outward and tilted.

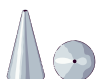


Make more petals around as you go down.



The end result will be a beautiful and full pinecone.

## Branch



#1

ENCO Color: Forest Green Combination



Pipe a straight line from top to bottom, ending at the tip.



Create short lines that face outward.



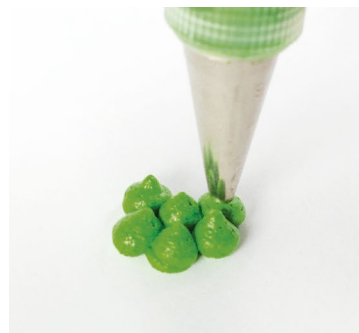
Add short strokes to create a foliage effect.

# Complement your Flower Decorations



## Foliage #6 y #3

ENCO Colors: Leaf Green and White



With the #6 dowel form small green cylinders and fill with white dots using the #3 dowel.

## Leaves #104 o #69

ENCO Colors: Leaf Green



With the thin end of the #104 dowel facing out, make a zigzag.

Repeat the movement to the other side.

Leaves are an important detail to highlight flowers. Include them with the #69 duya you can create this simple leaf.



# Flower Inspiration







**ENCO**<sup>®</sup>

**UNIQUE QUALITY,  
DAILY INSPIRATION**

CONTACT US!

[sales@encofoods.com](mailto:sales@encofoods.com)  
[www.encofoods.com](http://www.encofoods.com)  
(+52) 81 8355 8648

    /@ENCOFoods