

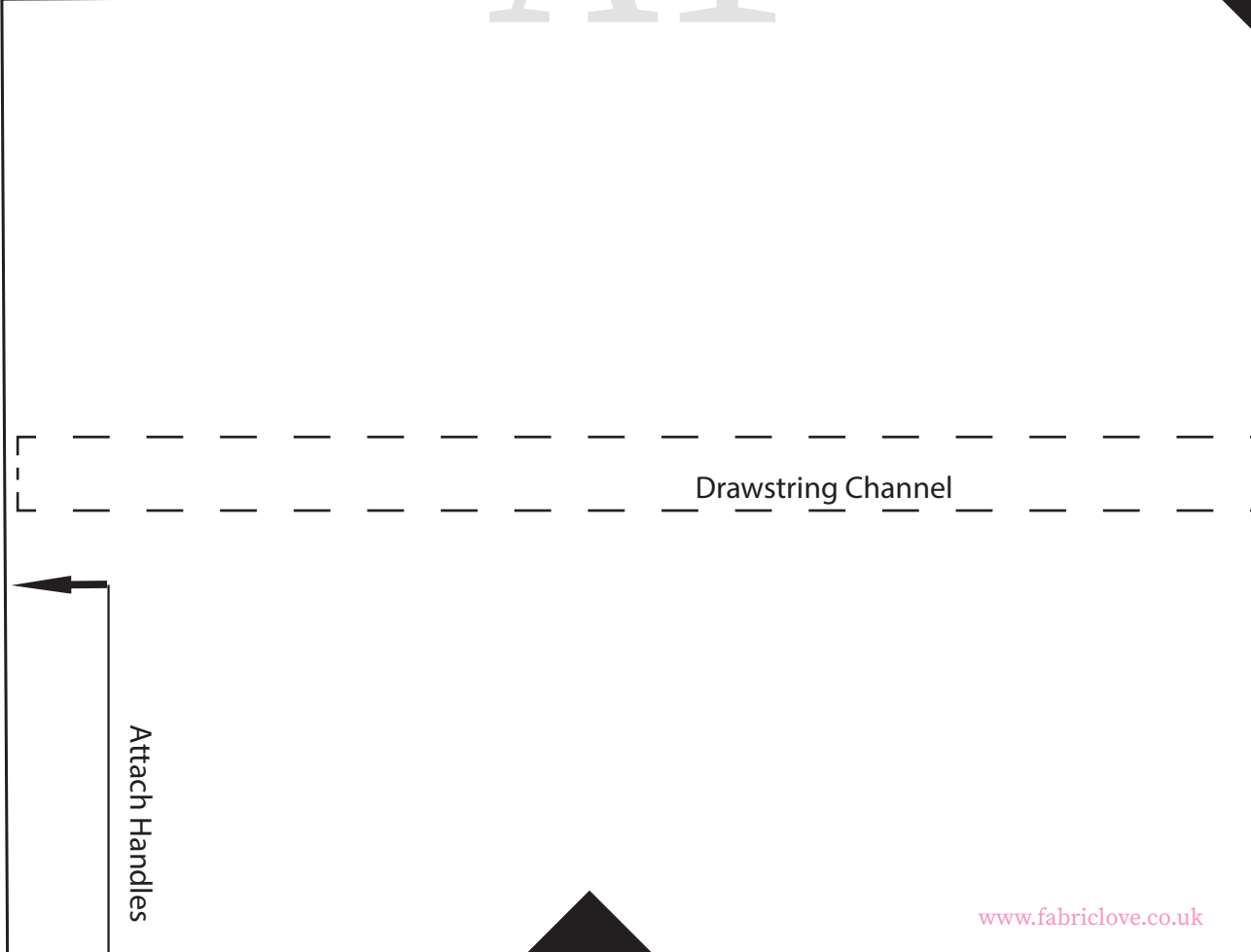
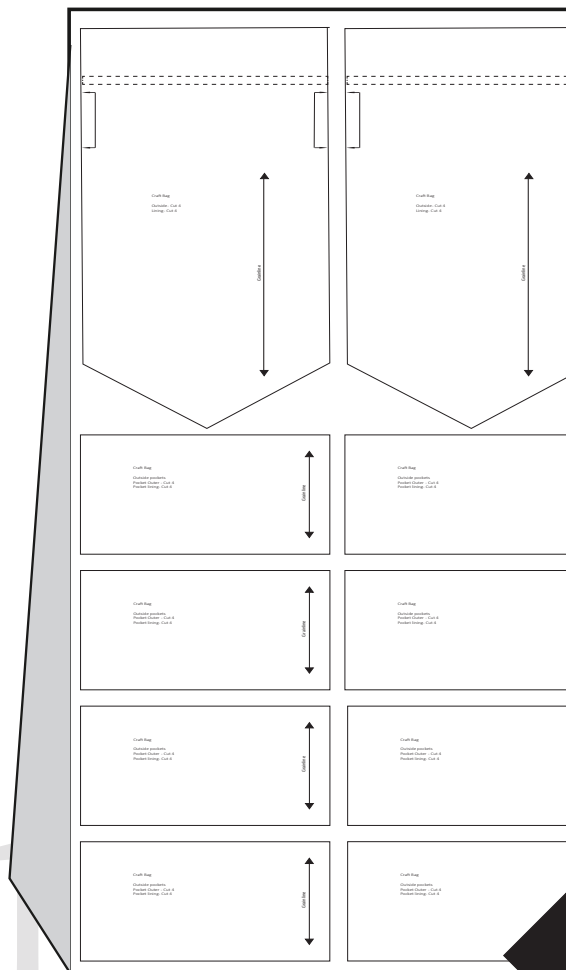
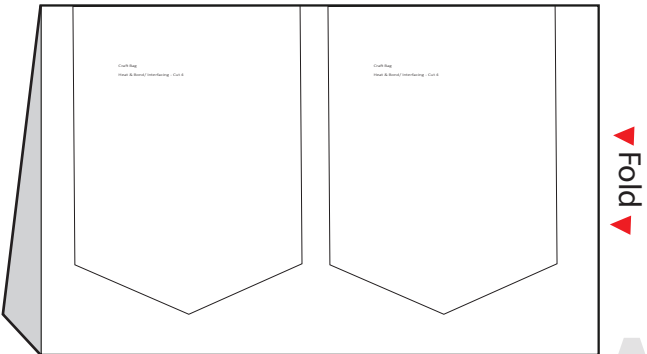


Pocket Crazy Craft Bag



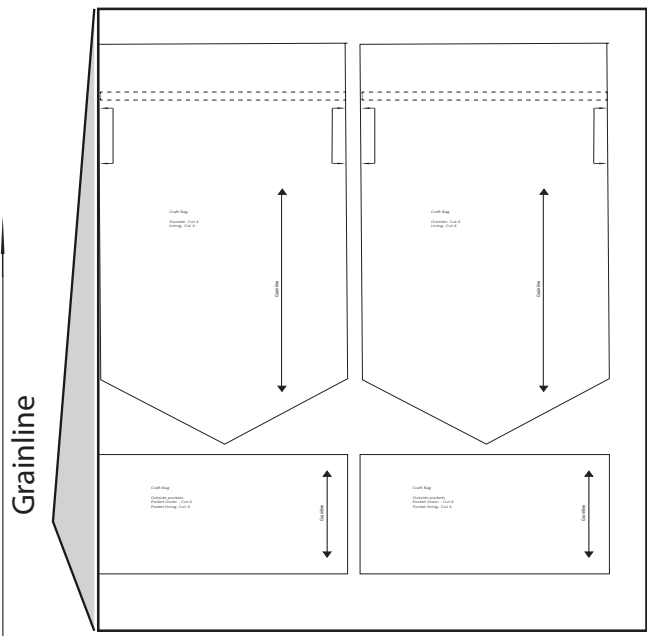
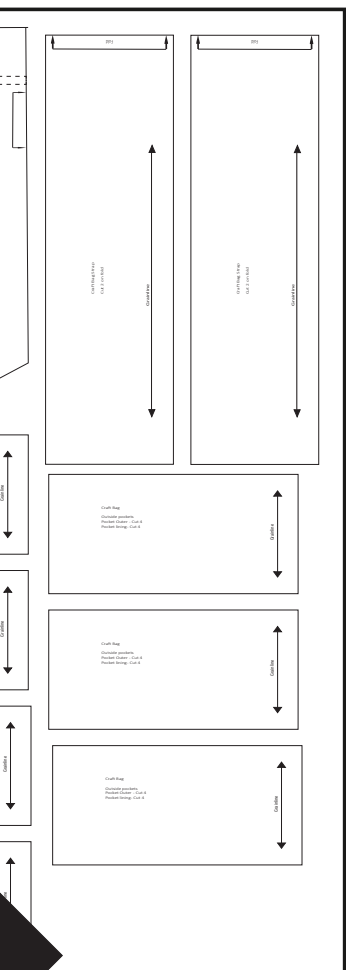
-  Wrong side of fabric
-  Right side of fabric

Heat & Bond



C Fold ▼

▼ Lining Fold ▼



Grainline

Grainline

A2

Craft Bag

Outside pocket

Pocket Outer -
Pocket lining -

Inside Pockets

Cut as required
Lining Optional

A3

Grainline





Craft Bag

Outside- Cut 4

Lining- Cut 4

B1

Fabric Love



Grainline



B2

Craft Bag

Heat & Bond

F

/ Interfacing - Cut 4

B3



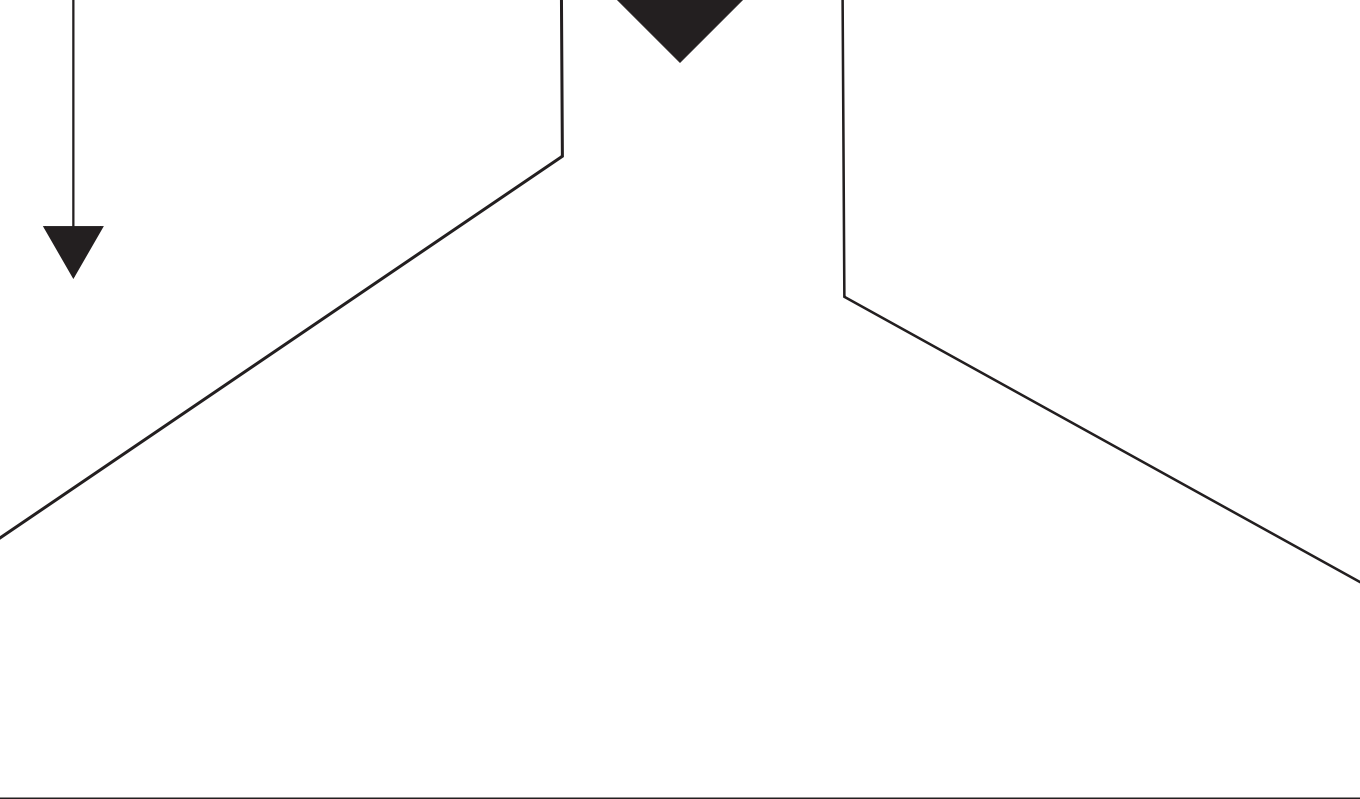


C1

Craft

Cut 2

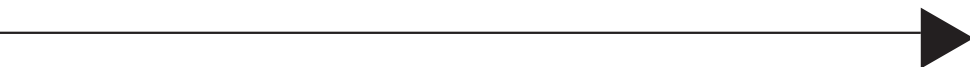
Grainline

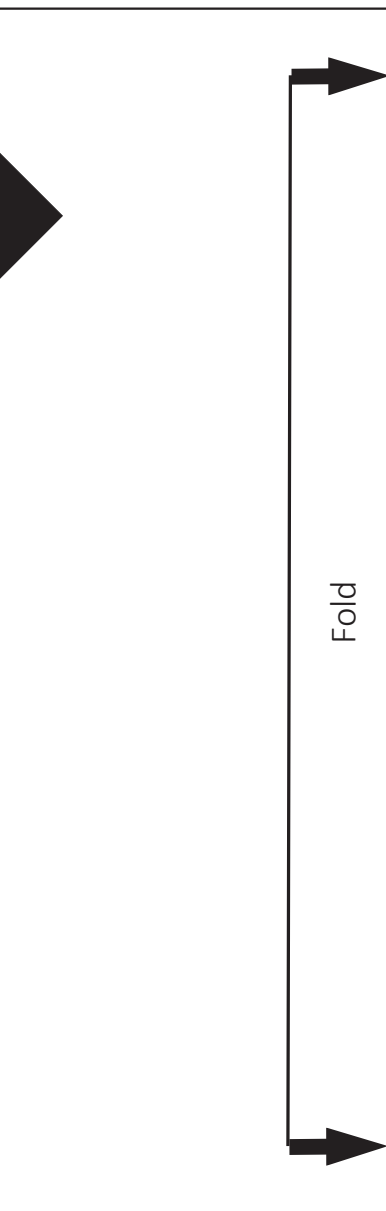
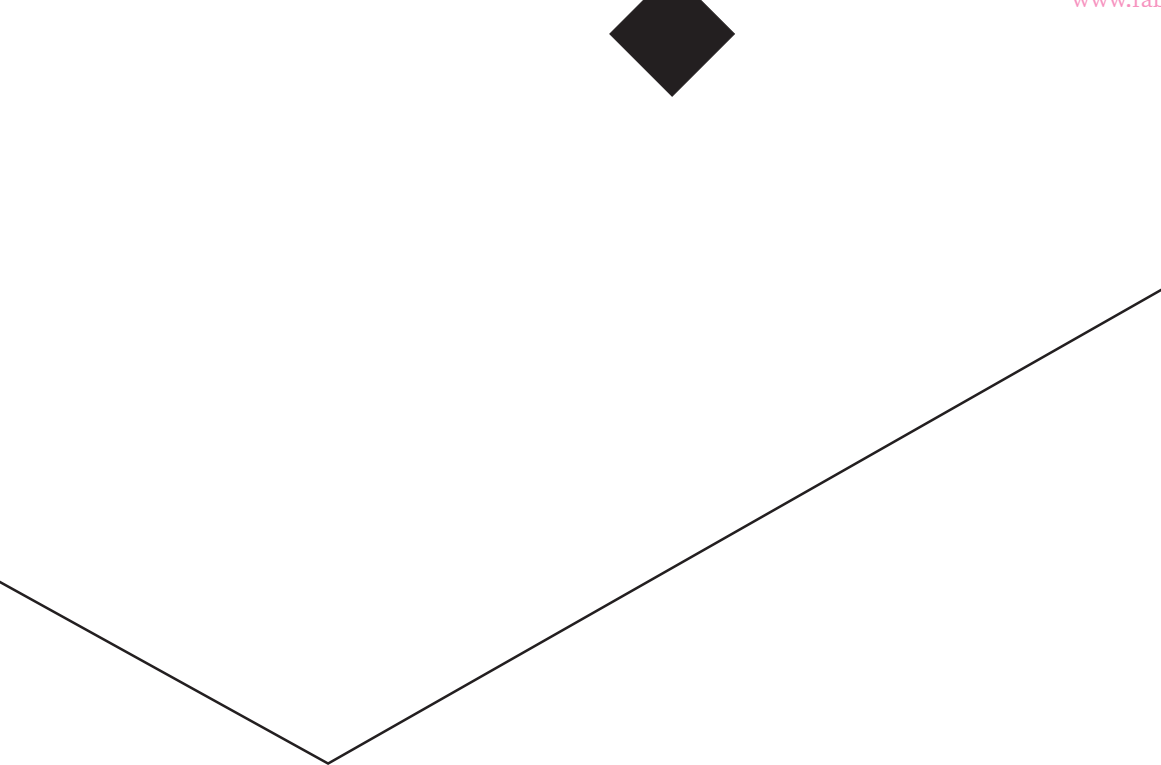


C2

Bag Strap

on fold





C3