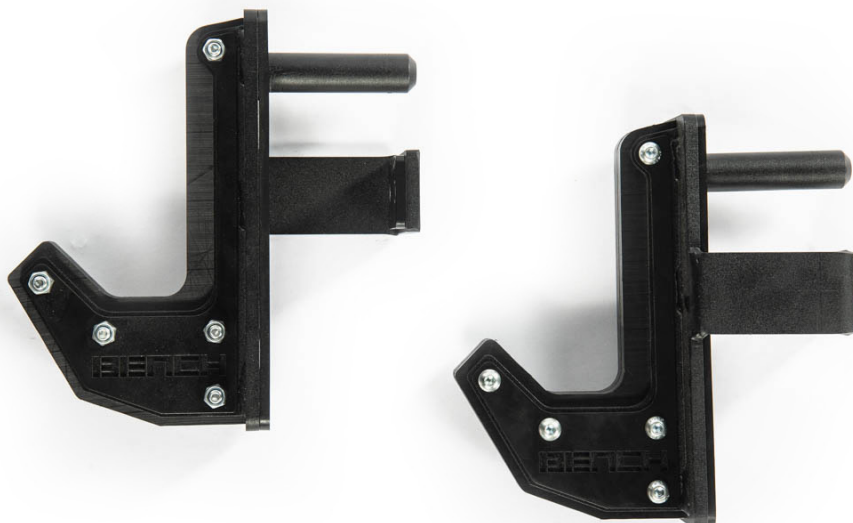


REVOLVE Sandwich J Hooks



Description

The Bench Fitness Revolve Sandwich J-Hooks are Built Strong using the highest quality materials to enable them to handle whatever weights you through at them. The Bench Fitness Revolve Sandwich J-Hooks are covered with high density plastic ensuring your barbells don't get damaged by metal on metal impacts. The Revolve Sandwich J-Hook will fit on any of the Bench Fitness Revolve Rack Range.

Coming as standard with a Built Strong Matte black coating and satin black logo plates, our Revolve range offers you a full range of custom colours and logos available upon enquiry.



24mm wide high density plastic



Customizable logo plate



High Density Plastic to protect rack

Features

- Full customization available
- 24mm wide PE-1000 material
- 8mm thick steel body
- Fits all REVOLVE Racks

Specifications

Material:	8mm mild steel, PE-1000
Length:	237mm
Height:	250mm
Width:	75mm
Weight:	3.5kg each



REVOLVE Sandwich J Hooks



Dimensions

