

AUTO BASEBALL FEEDER MACHINE

User instruction

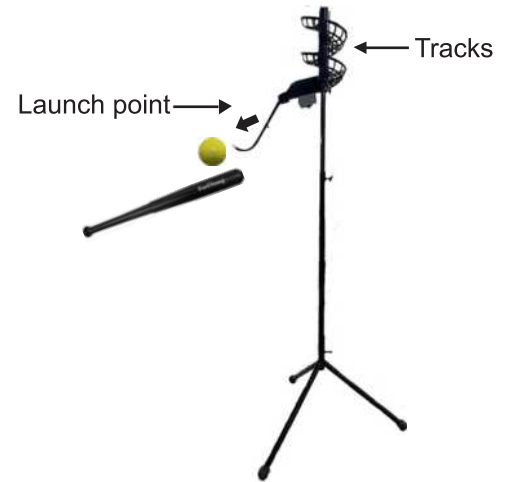
Parts list Kindly be sure all parts fine before assembling

Ball path 1 Ball chute 1 Timer 1 Connection pipes

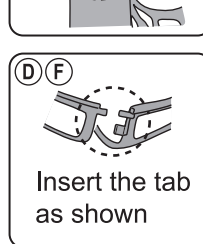
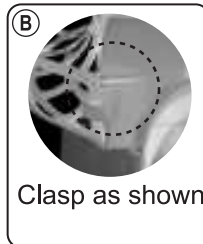
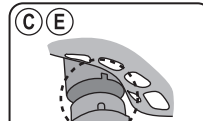
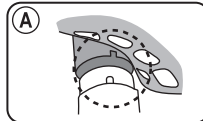
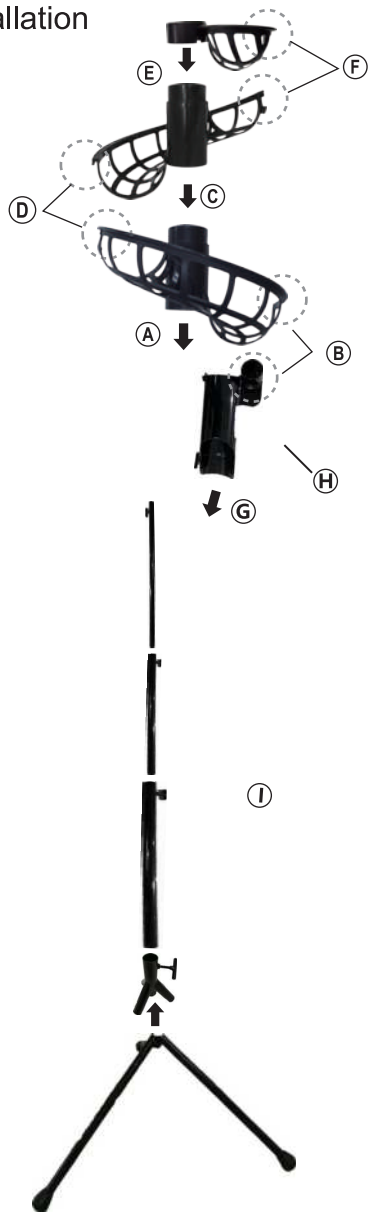
Screw driver 1

AA Batteries 2 Connection parts 1 Ball track 6 Top track 1 AC adapter 1

Assembly Shown



Installation



Easy way to assemble

Please squeeze ball carriage once out of shape.

G

Inset the path to ball chute as shown.

H

Assemble the time and follow steps as shown until clasping.

I

Assemble the pipes as shown like nesting doll.
Easy to adjust T bolt in order to changing Height.

Timer setting

switch the power on once starting to play. The caution light active every 6 seconds then dropping ball.



Adapter port

Loosen screw and attach 2*AA batteries of parts content. Then fasten it.

Ball tracks extension



Perfectly feeder for 777BH

Become the best accessory by uninstalling ball path.



NOTE!

- Please don't use product on raining days.
- Please keep it dry.
- Do not use it on wet surface.
- Adult assembly and supervision required.
- All person(s) not batting should stand behind the pitching machine.
- Do not use the product for any other purpose or with any other object.
- If the product jams, turn machine to "OFF" position.
- Keep product away from high temperature or any fire place.
- Please clean product once training session finished.

MADE IN CHINA