

# Indoor Batting Machine

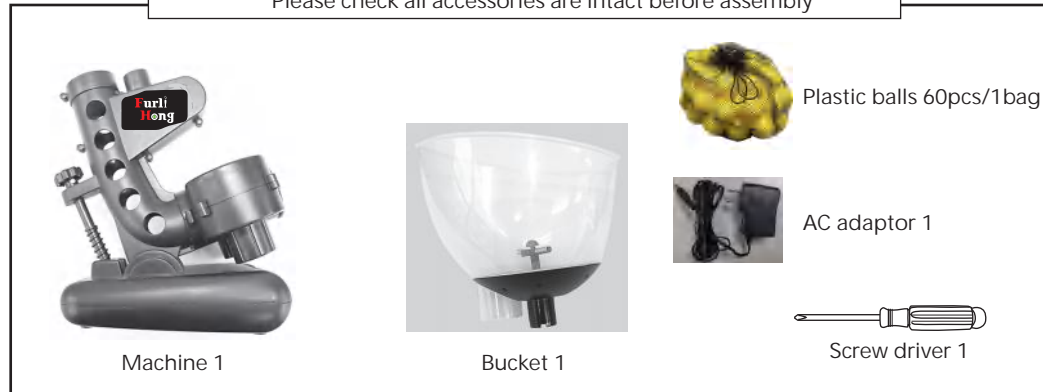
User instruction

Please keep this instruction well



Assemble as shown

Please check all accessories are intact before assembly



## Machine Instruction



## How to Assemble

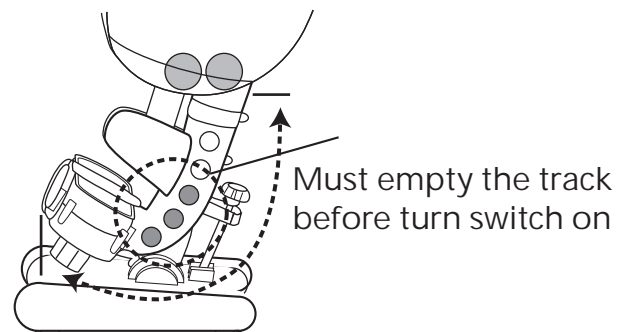
Please do not turn on switch before attach



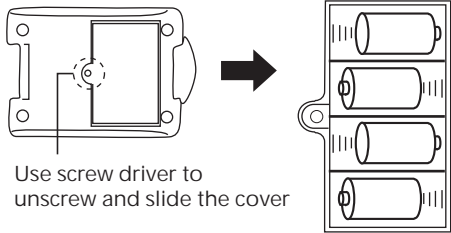
## How to adjust angle



## ※ NOTE



■ How to assemble batteries Please use 4\*C batteries.



Use screw driver to unscrew and slide the cover

Place batteries as shown

※ Try to change batteries if any happens as below

- 1、 Stopper' s getting slow or stop working
- 2、 Pitching distance decreasing
- 3、 Motor sound increasing

⚠ Precaution for battery installation

- The battery installation must be performed by adult
- Please install " + " and " - " properly
- Do not mix different types of batteries
- Do not mix new and old batteries
- Remove batteries if would not use machine for a long time



Keep face and hands away while machine working

Pitching distance and Height



Height 20inches~55inches  
Distance 21feet~25feet

⚠ NOTE

- Do not use in the rain , or near dust,salt spray.
- Do not wet the machine and battery box, AC adaptor.
- Ensure use the machine in wild space at least 13m.
- Do not stand in front of the ball launcher when in operation.
- Do not place heavy object above machine.
- Do not use this product for other purposes.
- Do not place machine near high temperature. Stay away from fire.
- Wipe and clean machine after finished training session.
- Children must play under adults supervision.
- Do not let face and hands approaching the laucher when in use.
- Do not disassemble this product, may cause malfunction.

MADE IN CHINA