

Baseball Toss Machine

Instruction

Please keep this instruction well

Parts content



Machine 1



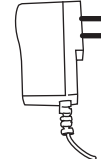
Ball track 2



Top track 1

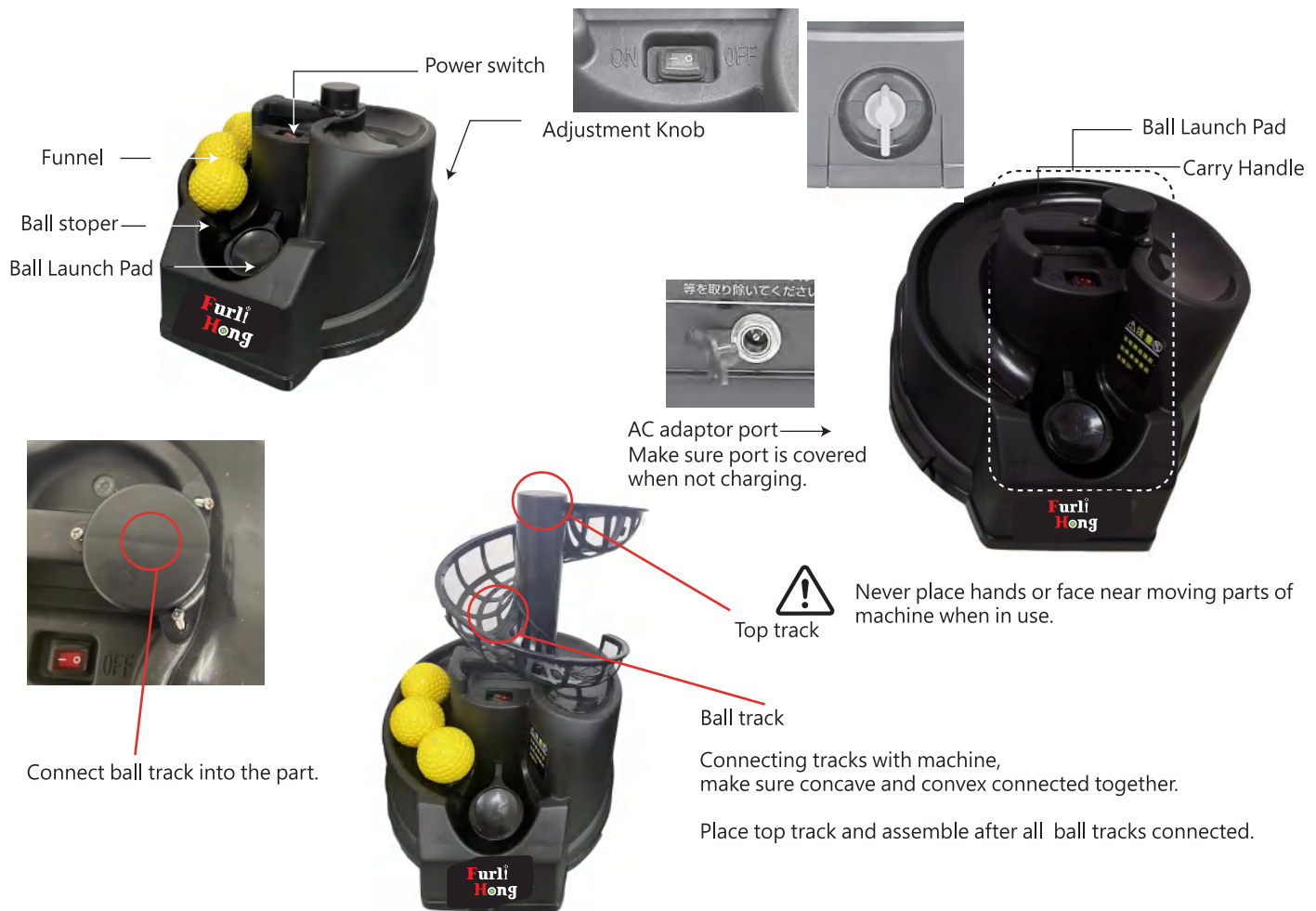


track connection 1



AC Adaptor 1pc

Parts description



Height adjustment



Adjustment Knob

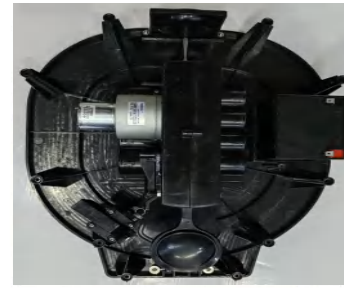
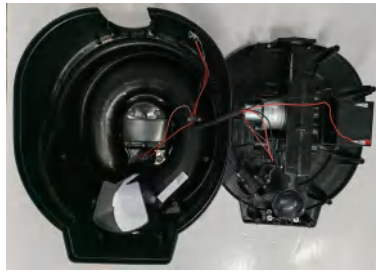
	● PU ball	Weak	Strong
Spec		1	4
		Low	High
Height		1.2m	2m
distance		0.9m	1.8m
	● Hard ball	Weak	Strong
Spec		1	4
		Low	High
Height		1m	1.7m
distance		1.4m	2m

PU baseballs and Baseballs are available for this machine.

Battery assembling



1. unscrew the cover and open



3. Untie the cords of black and red and ducking to the rechargeable battery.
NOTE DO not duck into wrong colors.



2. uninstall the battery holder as show, then place rechargeable battery on. Once placed, fasten the holder back on.



4. Slide back the cover and screws all.

NOTE

- Please use the right spec rechargeable battery Size : length9cm*width7cm*height10cm. 12V/4.5AH/20HR.
- DO not assemble the battery in wrong way which caused danger.
- The charge light is red and will be green when done.
- Please recharge the battery every 3 months if machine not in use.
- Please use AC adaptor if there' s no battery.
- The battery lifetime is about 2 years.

WARNING

- Use product in open field, do not use in crowd space.
- Adult supervision is required.
- Do not use this product on a raining day.
- Keep product away from water.
- Place product on flat and level surface.
- Keep funnel and launch pad clear.
- Do not place any other products except baseball /kittenball.
- Do not dismantle or alter product in any way.
- Store this machine in dry condition.
- Store this machine in dry condition.
- Keep battery in location with temperature between 40-100 degrees, do not place in trunk of a car.
- Battery is consumable, not included in product maintenance guarantee.

MADE IN CHINA