

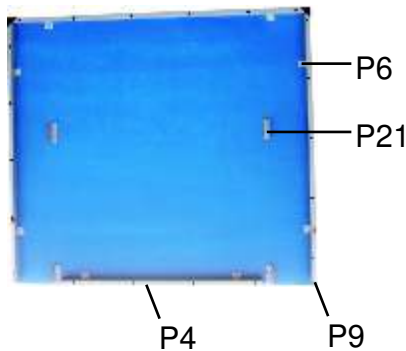
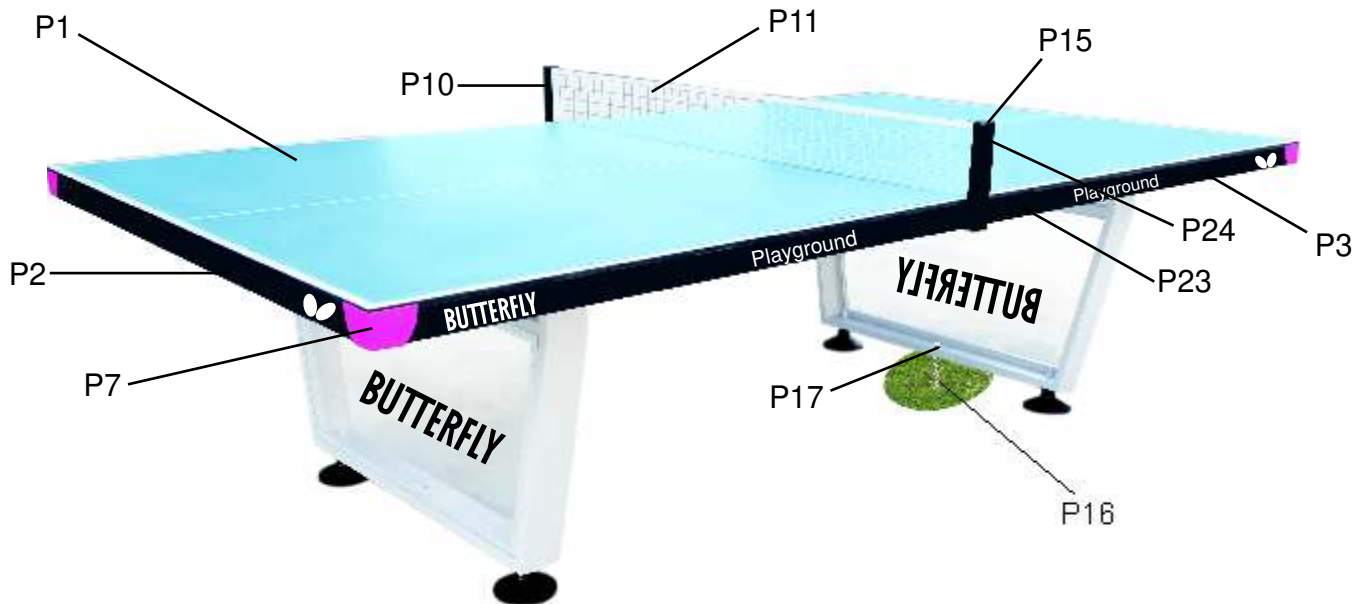
BUTTERFLY

Play Ground Table Tennis Table Assembly Instructions



BUTTERFLY

PARTS LIST

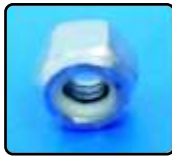


1. TABLE TOP W/P SIZE 1525×1370×12MM- 2 NOS.
2. END FRAME PIPE SIZE 25×50×1472MM- 2 NOS.
3. SIDE FRAME PIPE SIZE 25×50×1375MM- 4 NOS.
4. INNER FRAME PIPE SIZE 25×50×100MM - 2 NOS.
5. LEGS SIZE 95×690×1100MM - 2 NOS.
6. BRACKET FOR FRAME PIPE SIZE 25×100 - 16 NOS.
7. OUTER CORNER SIZE 47MM - 4NOS.
8. LEVELLERS SIZE 125MM ROUND - 4 NOS.
9. PLASTIC CAP FOR SIDE & END FRAME PIPE SIZE 25×50MM- 8 NOS.
10. POST SET - 1 NOS.
11. STEEL NET - 1 NOS.
12. SPANNER SIZE 18MM/19MM - 1 NOS.
13. SPANNER SIZE 8MM/6MM - 2 NOS.
14. FRAME TO ATTACH LEGS FRAME SIZE 23×95×850MM - 2NOS.
15. PLASTIC CAP FOR (STEEL) POST SIZE 25×38MM - 4 NOS.
16. SPRING TO ATTACH LEG INNER FRAME WITH GROUND SIZE 30×280MM - 2 NOS.
17. BOLT TO ATTACH LEG INNER FRAME WITH SPRING NUT SIZE 12×125MM - 2 NOS.
18. BOLT TO ATTACH LEG WITH LEGS SIDE PIPE (P25) SIZE 62×7.5MM - 16 NOS.
19. BOLT TO ATTACH LEG SIDE PIPE WITH TABLE TOP BRACKET SIZE 50×7.5MM - 8 NOS.
20. WASHER SIZE 9MM - 12NOS.
21. BRACKET TO ATTACH TABLE TOP WITH LEGS SIDE FRAME SIZE 9×38×100MM - 8 NOS.
22. STEEL ROD SIZE 9×200MM - 1 NOS.
23. BOLT TO ATTACH FRAME WITH POST SIZE 50×6MM - 8NOS.
24. BOLT TO ATTACH POST WITH NET SIZE 38×7.5MM - 4 NOS.
25. PIPE TO ATTACH LEGS SIZE 25×50×1375MM - 2 NOS.

BUTTERFLY



P18, P19
SIZE 7.5MM QTY. 24



P23
SIZE 6MM QTY. 8



P18
SIZE 62x7.5MM QTY. 16



P19
SIZE 50x7.5MM QTY. 8



P23
SIZE 50x6MM QTY. 8



P17
SIZE 12x125MM QTY. 2



P22
SIZE 9x200MM QTY.1



P22
SIZE 9MM QTY. 12



P25 - SIZE 25x50x1375MM QTY. 2



P12 - 18MM/19MM QTY. 1



P13 - SIZE 8MM/6MM QTY. 2



P11 QTY. 1



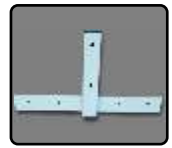
P16 SIZE 30x280MM QTY. 2



P5
SIZE 95x690x1100MM
QTY. 2



P8
SIZE 125MM QTY. 4



P10 QTY. 2



P24
SIZE 38x7.5MM QTY. 4

ADULT ASSEMBLY REQUIRED

Please read the safety instructions at the bottom of page- 4

STEP - 1



Attach the levellers (P8) with both the legs (P5).

STEP - 2



Attach pipe (P25) with legs (P5) using nut & bolt 62x7.5mm (P18) (both side) & tighten with the help of 2 spanners (P13).

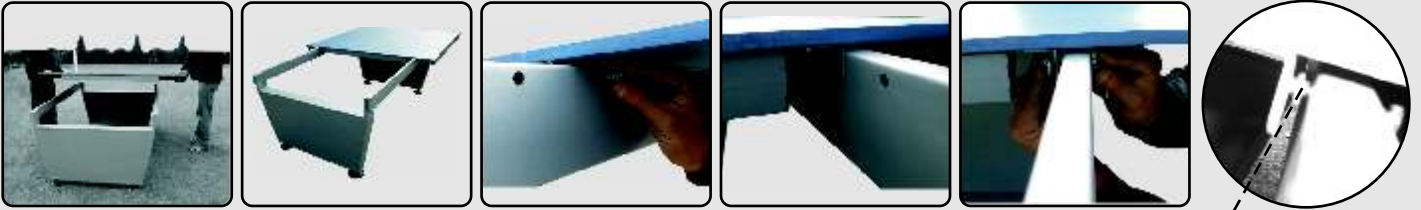
STEP - 3



Mark the hole through legs inner frame both side with rod (P22). Remove the legs & insert the spring (P16) into the ground & spin the spring with spanner (P12) make sure that the spring nut remains out. Bring legs inner frame (P5) on to the spring nut (P16) & insert the bolt (P17) & tighten with the help of spanner (P12)

BUTTERFLY

STEP - 4

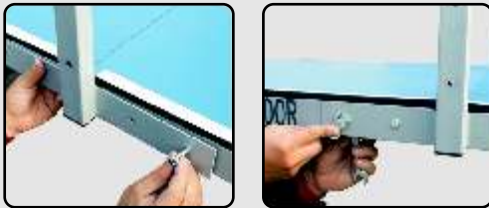


Attach table frame bracket (P21) with legs side pipe (P25) using nut & bolt size 50×7.5mm (P19) & tighten with the help of 2 spanners (P13)

Washer (P20) between (P17) & (P21)

STEP - 5 Repeat step 4 for the second half

STEP - 6



Attach post (P10) with table frame (P3) using nut & bolt 50×6mm (P23) & tighten it with the help of 2 spanners (P13)

STEP - 6



Place the net (P11) into post (P10) using bolt 38×7.5mm (P24) & tighten it with the help of spanner (P13)



Washer (P20) between (P10) & (P11)

YOUR TABLE IS NOW READY FOR PLAY

SAFETY INSTRUCTIONS

Children below 14 years should not assemble the table.
This table is suitable for indoor and outdoor use.
Always cover the table when not in use