

Survivor Filter®

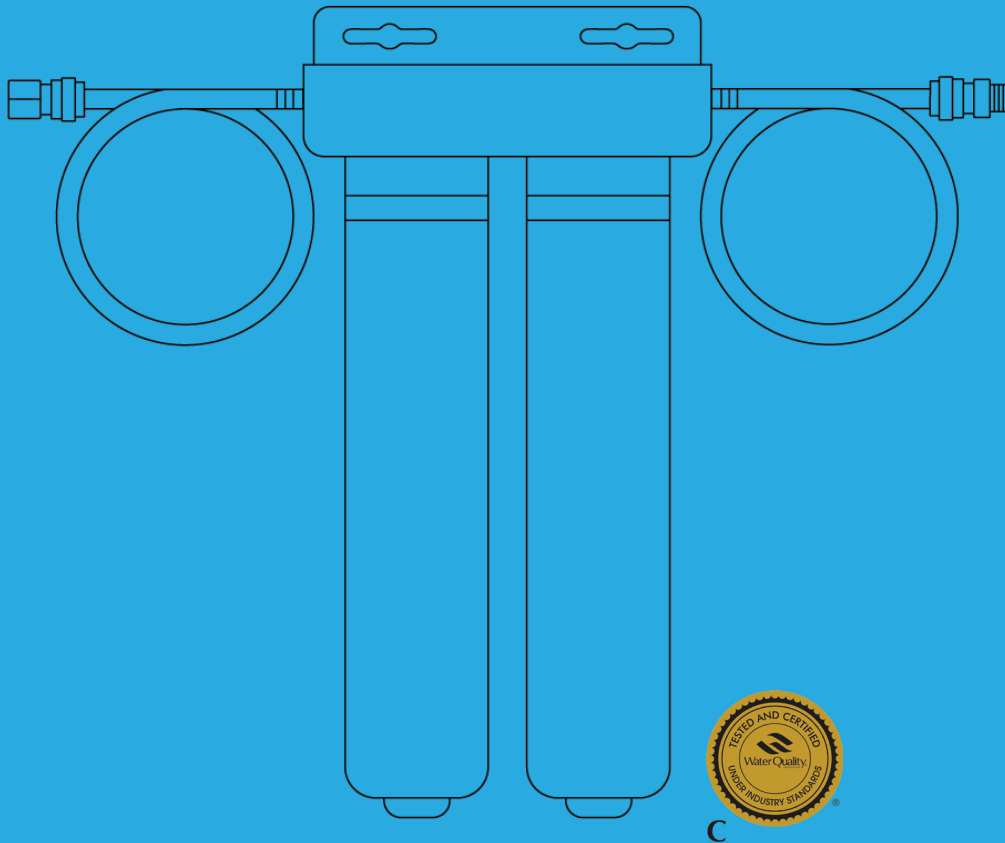
HOME

---

# Installation Guide

MAX, 2-Stage Fluoride and Chlorine In-Line Filter

MODEL SKU#: H200, H200-S1F, H200-S2F



[SURVIVORFILTER.COM](http://SURVIVORFILTER.COM)

# Survivor Filter® HOME

**Max**  
2 Stage Fluoride and Chlorine  
In-Line Filter

**CAUTION:** Install the water filtration system to a cold water supply only. Running hot water through the MAX Filter will damage the filter and void the lifetime warranty.

## SPECIFICATIONS

### MODEL SKU#:

H200

### REPLACEMENT FILTER SKU#:

Stage 1 Filter SKU: H200-S1F

Stage 2 Filter SKU: H200-S2F\*

### CAPACITY:

Stage 1 Filter: up to 5,000 gallons (18,927L)

Stage 2 Filter: 8,480 gallons (32,100L)

### USAGE LIFE CYCLE:

Stage 1 Filter: up to 1.5 years

Stage 2 Filter: 2 years

### WATER TEMPERATURE:

42°-120°F (6°-48°C)

### FLOW RATE:

up to 0.5 GPM (1.8 LPM)

### WATER PRESSURE:

206-861 KPA (30-125 PSI)

## COMPONENTS

Max 2 Stage Fluoride In-Line Filter

1x Inlet DC Hose

1x Outlet DC Hose with 3/8" connection

1x Filter Housing

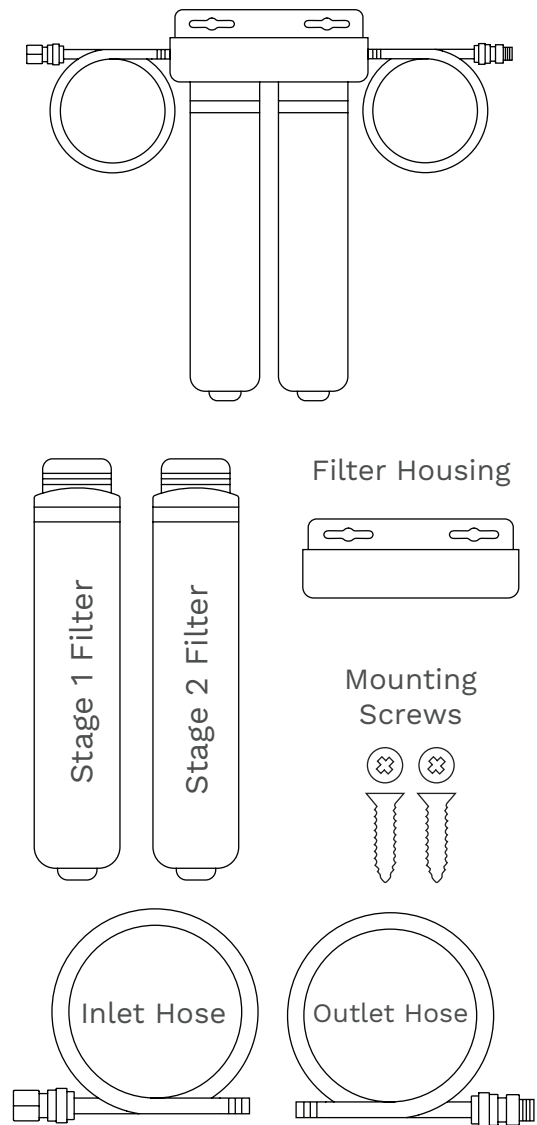
2x Mounting Screws

## BEFORE YOU BEGIN

Place a towel to catch any water that may come from your system during the installation process.

Replace the filter cartridges when they reach the respective capacity, usage life cycle or when a noticeable decrease in water flow is observed.

\*Only H200-S2F is certified by WQA to NSF/ANSI 42 for Chlorine, Taste and Odor and NSF/ANSI 372 for lead free compliance as verified and substantiated by test data.



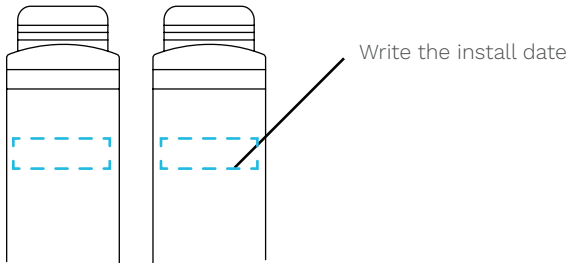
## RECOMMENDED TOOLS

Permanent Marker  
Towels  
Bucket

# Survivor Filter® HOME

**Max**  
2 Stage Fluoride and Chlorine  
In-Line Filter

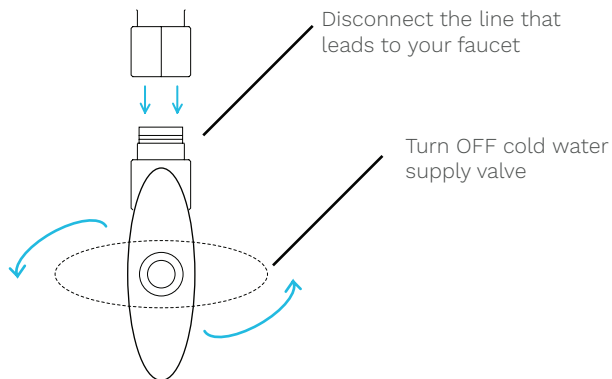
## FILTER INSTALLATION



**1**

### DATE FILTER

Write the installation date on the new filter label areas

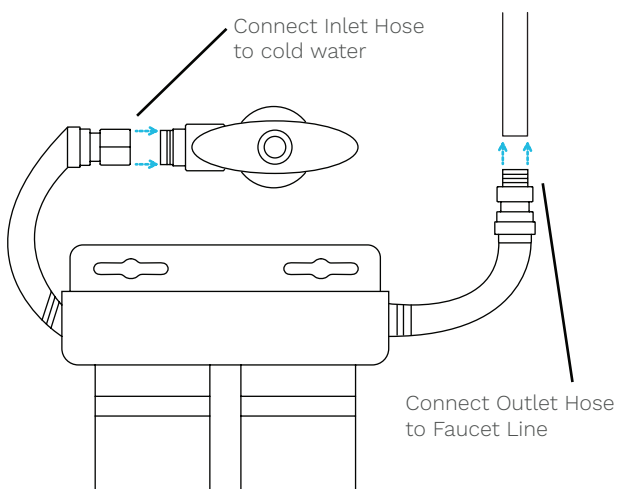


**2**

### DISCONNECT WATER

Under the sink, turn the cold water supply valve to the “OFF” position

Disconnect the existing fitting on the cold water supply valve that leads to the faucet



**3**

### CONNECT FILTER

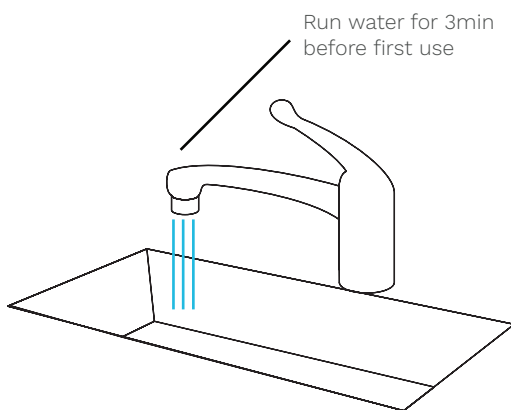
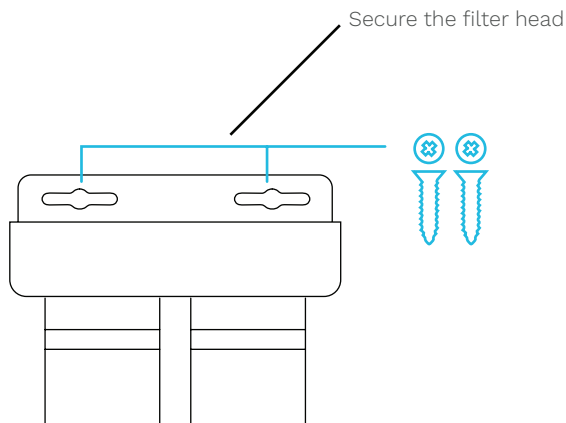
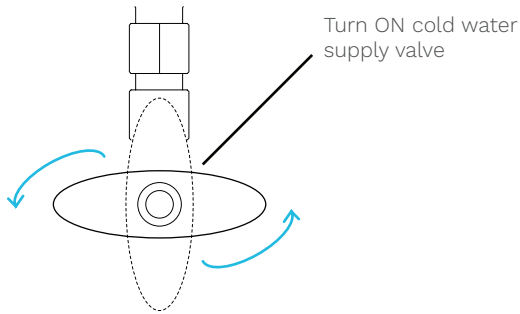
Connect the 3/8” female connection Inlet hose end to the cold water supply valve

Connect the 3/8” male connection Outlet hose end to the existing hose that leads to the faucet

# Survivor Filter® HOME

**Max**  
2 Stage Fluoride and Chlorine  
In-Line Filter

## FILTER INSTALLATION



**4**

### TURN ON WATER

Turn the cold water supply valve back into the “ON” position

**5**

### MOUNT THE FILTER

Secure the filter head in a convenient location

**6**

### IMPORTANT! FLUSH THE FILTER

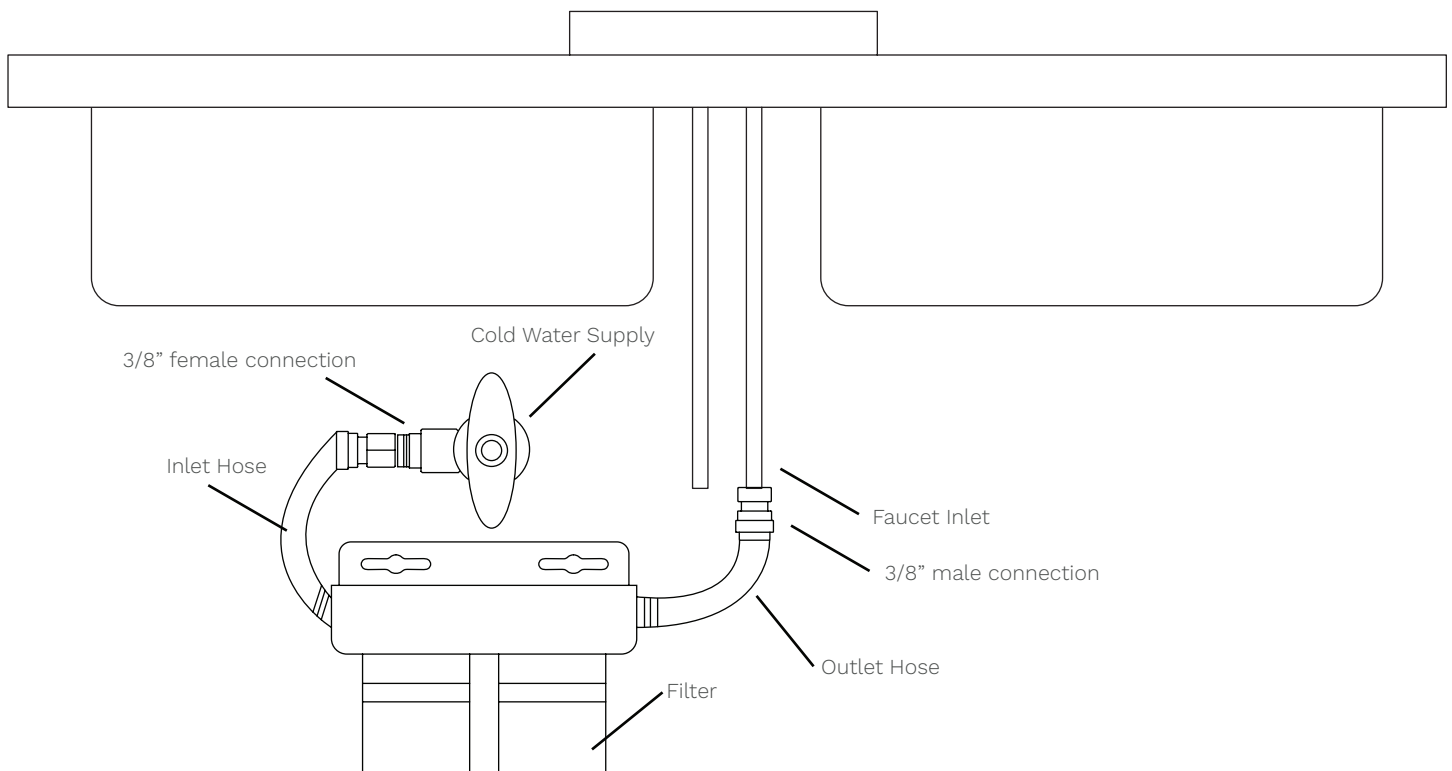
Flush the filter by allowing the water to run out of the faucet for 3 minutes to remove any carbon debris

\*Any air left in the system may cause the water to be cloudy temporarily

# Survivor Filter® HOME

**Max**  
2 Stage Fluoride and Chlorine  
In-Line Filter

## COMPLETE SET-UP OVERVIEW



### Check for Leaks

- Ensure all connections are tight
- Turn on the water supplies, and check all connections for leaks

### FIRST USE

**Note:**

- During first use, you may notice cloudy water. This cloudiness is air bubbles trapped within the filter. It is not harmful to drink this and it will dissipate after a week of first use. If no leaks are present, your system is now ready to use!

## System Performance Data Sheet



C

The H200-S2F (Stage 2 MAX All Tap Filter) has been tested according to NSF/ANSI 42 for reduction of the substances listed below and NSF/ANSI 372 for lead free compliance as verified and substantiated by test data. The concentration of the indicated substances in water entering the system was reduced to a concentration less than or equal to the permissible limit for water leaving the system, as specified in NSF/ANSI 42. The chlorine influent concentration shall be specified as 2 mg/L, the chlorine product water concentration shall be calculated based on the percent reduction of chloramine, and the stated percent reduction for chlorine shall be equal to that achieved for chloramine.

Substance	Influent Challenge Concentration	Reduction Requirement
Chlorine	2.0 mg/L ± 10%	<50%

While testing was performed under standard laboratory conditions, actual performance may vary.

<b>H200-S1F Rated Capacity</b>	5,000 gallons (18,927L)
<b>H200-S2F Rated Capacity</b>	8,480 gallons (32,100L)
<b>Min-Max Operating Pressure:</b>	206-861 KPA (30-125 PSI)
<b>Min-Max Feed Water Temperature:</b>	42°-120°F (6°-48°C)
<b>Rated Service Flow</b>	0.5 GPM (1.8 LPR)

- The system and installation shall comply with applicable state and local regulations.
- Do not use with water that is microbiologically unsafe or of unknown quality without adequate disinfection before or after the system.
- Install the MAX, 2-Stage Fluoride and Chlorine In-Line Filter to a cold water supply only. Running hot water through the system will damage the filter and void the lifetime warranty.
- To read more about our Lifetime Warranty, visit: [www.survivorfilter.com/warranty](http://www.survivorfilter.com/warranty)