

Survivor Filter®

PORTABLE WATER FILTER

Product Guide

Survivor Filter Straw

MODEL SKU#: L600



SURVIVORFILTER.COM

Survivor Filter® PORTABLE WATER FILTER

Specs &
Components

SPECIFICATIONS

MODEL SKU#: L600

REPLACEMENT FILTER SKU#:

Cotton Filter Pad: L600-CPK

Carbon Filter Mouthpiece: L600-CF

Ultra Filter: L600-UF

CAPACITY:

Cotton Filter Pad:

1,000 Liters (264 gal)

Carbon Filter Mouthpiece:

1,000 Liters (264 gal)

Ultra Filter:

100,000 Liters (26,417 gal)

FLOW RATE: 500 mL/min (17 oz/min)

SIZE: 7 x 1.4 x 1.4"

WEIGHT: 3.5 oz

MICRON RATING:

Ultra Filter: 0.05 micron

COMPONENTS

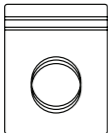
Survivor Filter Straw

5x Cotton Filter pads

1x Ultra Filter

1x Carbon Filter mouthpiece

1x User manual



Cotton Filter
pads



Carbon Filter
Mouthpiece



Ultra Filter

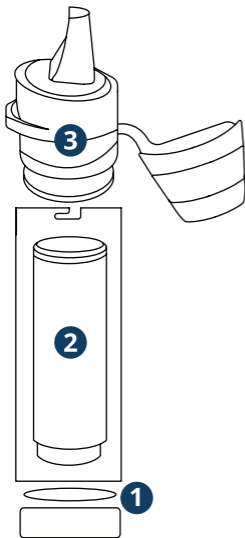


Survivor Filter

Survivor Filter® PORTABLE WATER FILTER

How
it works

HOW IT WORKS



1 Stage 1: Cotton Filter Pad

The first stage of filtration comes in direct contact with your water source to block out large particles. It can be reused up to 1,000 liters (264 gal).

2 Stage 2: Ultra Filter

Located inside the straw, independent tests have shown this filter can remove 99.999% of tested virus and staph. Blocking pollen, algae, giardia, e.coli, protozoa, cryptosporidium, bacteria and toxins. At 0.05 micron, this filter can be reused up to 100,000 liters (26,417 gal).

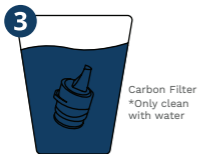
3 Stage 3: Carbon Filter Mouthpiece

Finally, remaining contaminants gets trapped in the carbon filter, which will reduce heavy metals, chemicals, improve water taste and odor. The mouthpiece can be reused up to 1,000 liters (264 gal).

Survivor Filter® PORTABLE WATER FILTER

Cleaning
the filters

CLEANING THE FILTERS



1 **Cotton Filter pads cleaning**
Rinse the cotton filter in clean water.

2 **Ultra Filter cleaning**
Soak the Ultra Filter in clean water, or 1:1 vinegar to water ratio for 15 minutes. After soaking, remove the filter from the clean water and shake out the filter to remove any excess water.

3 **Carbon Filter cleaning**
Soak the Carbon Filter in clean water for 15 minutes. After soaking, remove the filter from the clean water and shake out the filter to remove any excess water. Never clean your carbon filter with anything except water.



Always air dry the filters

Remember to air dry your filters for a minimum of 24 hours after cleaning to prevent any moisture from accumulating during storage.



Clean after every use

Cleaning the three filters after each trip greatly extends their life.



visit: youtube.com/survivorfilterofficial
for a video demo

Survivor Filter®

PORTABLE WATER FILTER

Tips &
tricks

TIPS & TRICKS



Say NO to salt water

All of our filter systems are made to filter fresh water sources, or municipal tap water only. Some examples of fresh water sources include: lakes, rivers, streams and ponds.



Use as a squeeze system

Screw any 28mm threaded standard disposable bottle or water canteen to the bottom of the Survivor Filter and squeeze through the water. SURVIVOR CANTEENS™, a durable, collapsible 33 oz. pouch that rolls up when not in use and clips to any backpack with the included carabiner is a great option. Available on www.survivorfilter.com.



Winter usage

Ensure you keep your filter insulated in your jacket or sleeping bag in sub-zero temperatures. Be sure your filter is also completely free of water before storing away. If you ensure the filters are completely free of water, then the risk of damaging the filters are much lower.



Air dry it out

Storing away? Disassemble completely and air dry for a minimum of 24 hours, then store away. Perform a vigorous shake test to see if there is any excess water left inside.



TDS Testing

If you're looking to test how well our filter works on pathogens, we recommend testing on water from the outdoors that hasn't been treated with chlorine (ie. tap water). Pre-test the dirty water, run the water through the filter, then test again to see a dramatic TDS drop.



We've got you covered

Tested in the USA to NSF/ANSI standards to filter: bacteria, staph, parasites and virus to 99.999%. It also significantly reduces heavy metals, making it safe to use in most natural bodies of water throughout the world.

Survivor Filter®

SURVIVOR FILTER is a company with a simple goal - to provide people with access to clean water in any environment when they need it most.

Lifetime Warranty

Survivor Filter provides a Lifetime Replacement Warranty against manufacturing defects on purchases. To read more about our Lifetime Warranty, visit: survivorfilter.com/warranty

Replacements

To purchase replacement parts and filters, visit: survivorfilter.com

Contact

For filtration testing reports, frequently asked questions, international manuals or general inquires, visit: survivorfilter.com or call us at 1-888-602-6367