

# Survivor Filter<sup>®</sup>

## ACTIVE FILTRATION BOTTLE

WITH IONIC ADSORPTION TECHNOLOGY



Removes  
99.99%  
Bacteria



Removes  
99.99%  
Parasites



Removes  
VOC & Toxic  
Chemicals



Removes  
Heavy  
Metals



Removes  
Unpleasant  
Taste & Odor

### SPECIFICATIONS

**Filtration:** Ionic Adsorption Micron Filtration system capable of 99.99% reduction in 3 areas of contamination, plus bacteria & cysts, while leaving in beneficial minerals like calcium, magnesium, and potassium.

**Weight:** 4.9 ounces (138 grams)

**Size:** 3"(7.6cm)L x 10"(25.4cm)H x 3"(7.6cm)W

**Bottle Capacity:** 900mL / 30oz

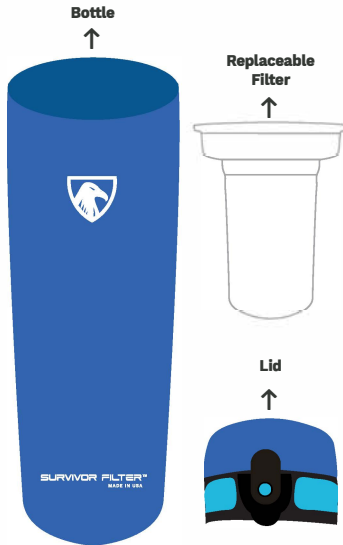
#### Filter Capacity:

Raw, Untreated Water: 25 gallons

Municipal Tap Water: 100 gallons

**Materials:** BPA Free Low-density polyethylene

**Simple 3-piece construct:** bottle, filter, lid



COMPONENTS

### HOW TO FILTER WATER



1. Screw lid off and remove filter from bottle



2. Fill bottle with dirty water from stream or tap



3. Place filter back in & screw lid back on



4. Squeeze, drink and enjoy!

**CAUTION:** Do not use with salt or hot water, and do not allow filter to freeze.

### Maintaining Your Device

**Clogging:** If it gets harder to squeeze the water through the filter, let the bottle and filter sit for 24 hours and the filter should naturally de-clog to allow for rapid flow.

**Replacing Filter:** If it is still difficult to drink through after letting the filter sit, this is an indication that it is time to change your filter. We recommend changing your filter every 25 gallons if using natural, untreated water and 100 gallons if filtering city water (municipal tap).

**Cross-Contamination:** Proper handling and installation of the filter prevents cross-contamination. Fill the empty water bottle with dirty water and install the filter after. Do not fill the bottle with dirty water while the filter is on.

**Cleaning:** Air dry filter completely. DO NOT ATTEMPT TO CLEAN THE FILTER, as this will damage the filter element. Hand wash bottle and lid with warm water and soap or in the dishwasher (top rack only).

**Support:** for any questions, please contact us at: [support@survivorfilter.com](mailto:support@survivorfilter.com) or visit [www.survivorfilter.com](http://www.survivorfilter.com) for more details and how-to videos about your product.

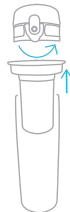
### OUR COMMITMENT TO YOU

**Survivor Filter products are designed, built and tested to perform their best and we guarantee that without a question. We offer a 100% Lifetime Warranty on all products purchased. The bottom line is we love our customers and our customers love our products.**

Please register your product at:  
[www.survivorfilter.com/pages/warranty](http://www.survivorfilter.com/pages/warranty)

### REMOVING FILTER TO DISCARD

Twist lid off and remove old filter to discard



### INSTALLING NEW FILTER

Twist lid off and install new filter



Place the lid back on and firmly twist until locked in place.

## ON-THE-GO FILTRATION

- ✓ Lake Water
- ✓ River Water
- ✓ Ponds
- ✓ Stream Water
- ✓ Tap Water
- ✓ School Fountains

## BRING IT ANYWHERE

- ✈ Travel
- ✚ Survival
- 🏠 Cottages
- 👨 School
- 🏕 Camping
- 🚗 Roadtrips



**SURVIVOR FILTER™**

WWW.SURVIVORFILTER.COM  
SURVIVOR FILTER™ ©2019

[www.survivorfilter.com/pages/manuals](http://www.survivorfilter.com/pages/manuals)