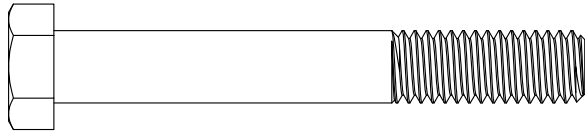
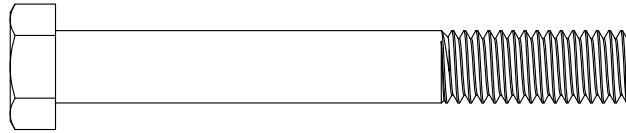


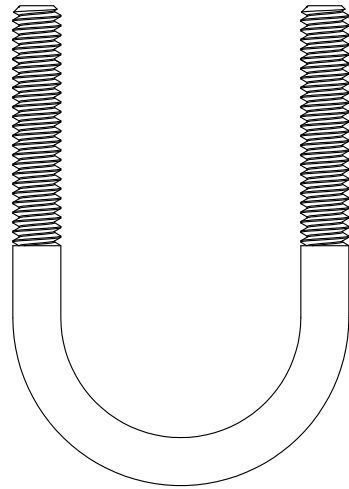
-(QTY.3) PN00277 HEX BOLT SS.
3/8-16 X 5"



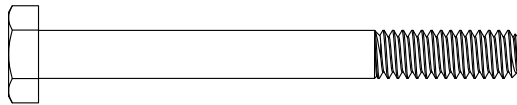
-(QTY.4) PN00268 HEX BOLT SS.
3/8-16 X 2 $\frac{3}{4}$ "



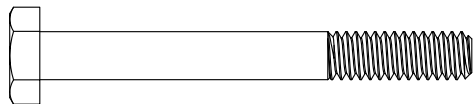
-(QTY.2) PN00269 HEX BOLT SS.
3/8-16 X 3"



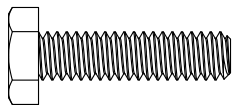
-(QTY.24) PN00810 "U" BOLT SS.



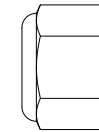
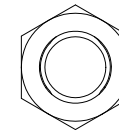
-(QTY.4) PN00227 HEX BOLT SS.
1/4-20 X 2 $\frac{1}{2}$ "



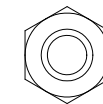
-(QTY.1) PN00267 HEX BOLT SS.
1/4-20 X 2 $\frac{1}{4}$ "



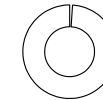
-(QTY.38) PN00221 HEX BOLT SS.
1/4-20 X 1"



-(QTY.10) PN00052 BRASS NYLOCK NUTS
3/8-16



-(QTY.90) PN00036 NYLOCK NUT BRASS
1/4-20



-(QTY.48) LOCK WASHER SS $\frac{1}{4}$ "

FENDOCK

PN 97002 HARDWARE SINGLE ROLLER RAMP (2021 UP)

FEB. 24 / 2021

DRAWN BY
SW

DWG NO
1

SINGLE ROLLER RAMP ASSEMBLY INSTRUCTIONS

TOOLS REQUIRED:

- RATCHET WITH $\frac{7}{16}$ " & $\frac{9}{16}$ " SOCKET
 - $\frac{7}{16}$ " & $\frac{9}{16}$ " WRENCH

91 HARDWARE

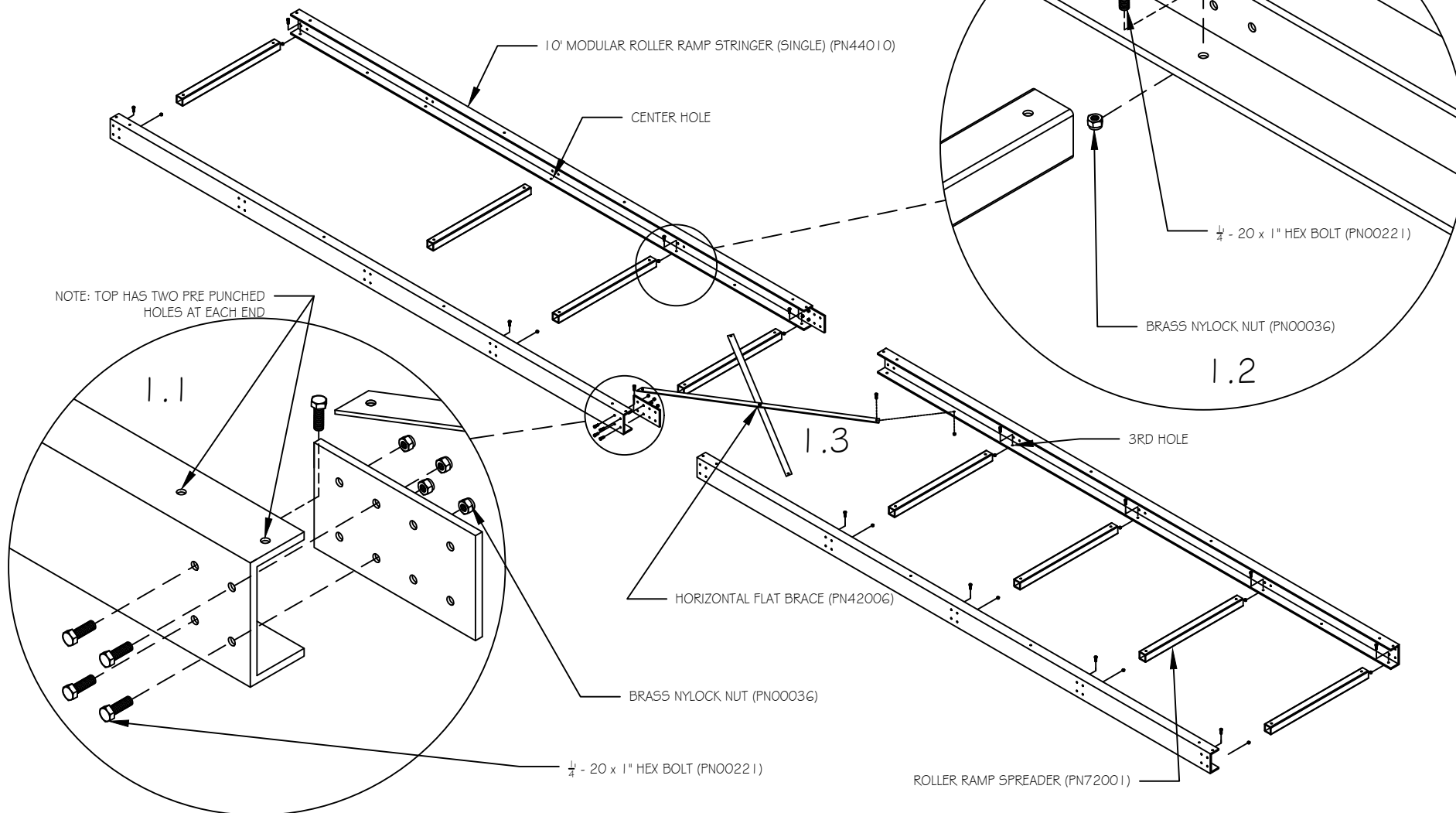
(1.1) -ALIGN FOUR 10' ROLLER RAMP STRINGERS AS SHOWN (NOTE: TOP HAS TWO HOLES AT EACH END)

-WITH FOUR $\frac{1}{4}$ " - 20 X 1" HEX BOLTS ATTACHED BOTH JOINER PLATES AS SHOWN

-WITH ADDITIONAL FOUR NUTS/BOLTS CONNECT STRINGERS MAKING TWO 20' STRINGERS AS SHOWN

(1.2) -ALIGN SPREADERS UNDERNEATH STRINGERS AS SHOWN, PASS $\frac{1}{4}$ " - 20 X 1" HEX BOLT THROUGH STRINGER, NUT THREADS ONTO BOLT INSIDE SPREADER

(1.3) -ALIGN HORIZONTAL FLAT BRACE AS SHOWN, FASTEN USING $\frac{1}{4}$ " - 20 HEX BOLTS, BRACE WILL BE SNUG AND WHEN IN CORRECT POSITION WILL HAVE A SLIGHT BOW IN IT.



FENDOCK

SINGLE ROLLER RAMP ASSEMBLY INSTRUCTIONS

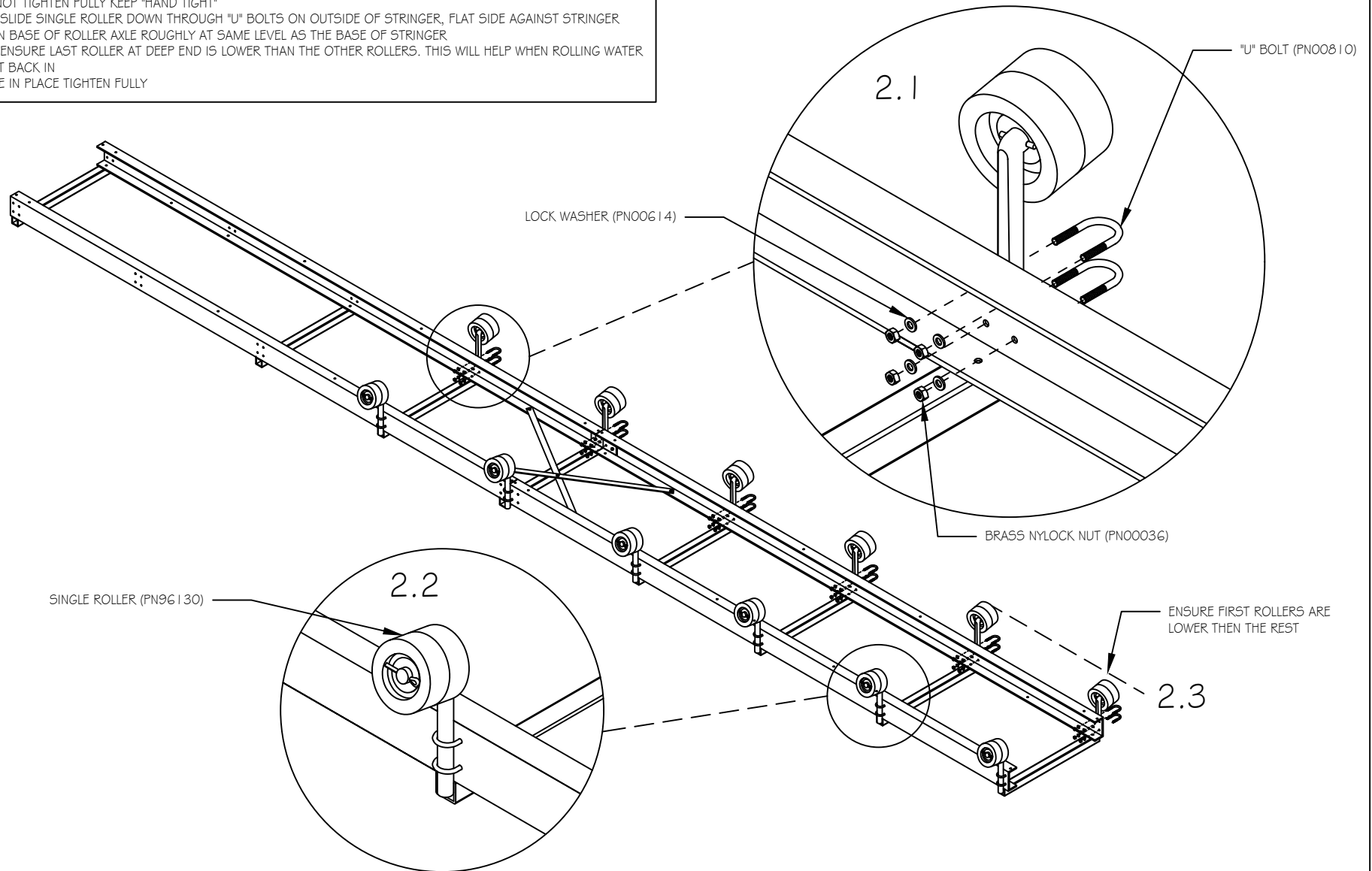
JAN. 08 / 2021

DRAWN BY
SW

PG
2

52 HARDWARE

- (2.1)-ON OUTSIDE OF STRINGER PLACE "U" BOLTS THROUGH PRE DRILLED HOLES AS SHOWN
-INSIDE STRINGER PLACE LOCK WASHERS THEN BRASS NYLOCK NUTS ONTO "U" BOLTS AS SHOWN
-DO NOT TIGHTEN FULLY KEEP "HAND TIGHT"
(2.2)-SLIDE SINGLE ROLLER DOWN THROUGH "U" BOLTS ON OUTSIDE OF STRINGER, FLAT SIDE AGAINST STRINGER
-ALIGN BASE OF ROLLER AXLE ROUGHLY AT SAME LEVEL AS THE BASE OF STRINGER
(2.3)-ENSURE LAST ROLLER AT DEEP END IS LOWER THAN THE OTHER ROLLERS. THIS WILL HELP WHEN ROLLING WATER CRAFT BACK IN
-ONCE IN PLACE TIGHTEN FULLY



FENDOCK

SINGLE ROLLER RAMP ASSEMBLY INSTRUCTIONS

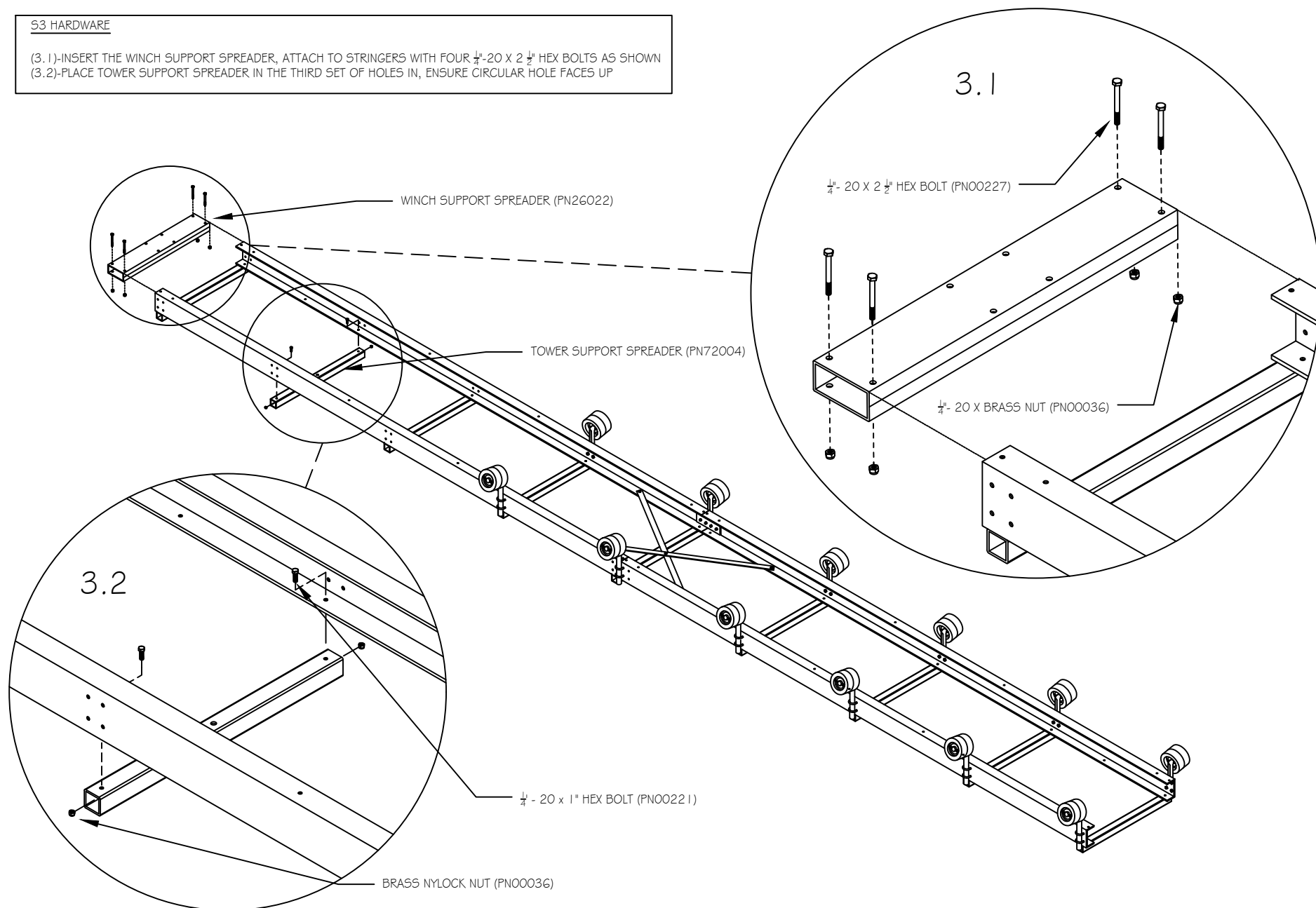
JAN. 08 / 2021

DRAWN BY
SW

PG
3

53 HARDWARE

- (3.1)-INSERT THE WINCH SUPPORT SPREADER, ATTACH TO STRINGERS WITH FOUR $\frac{1}{4}$ "-20 X 2 $\frac{1}{2}$ " HEX BOLTS AS SHOWN
(3.2)-PLACE TOWER SUPPORT SPREADER IN THE THIRD SET OF HOLES IN, ENSURE CIRCULAR HOLE FACES UP



FENDOCK

SINGLE ROLLER RAMP ASSEMBLY INSTRUCTIONS

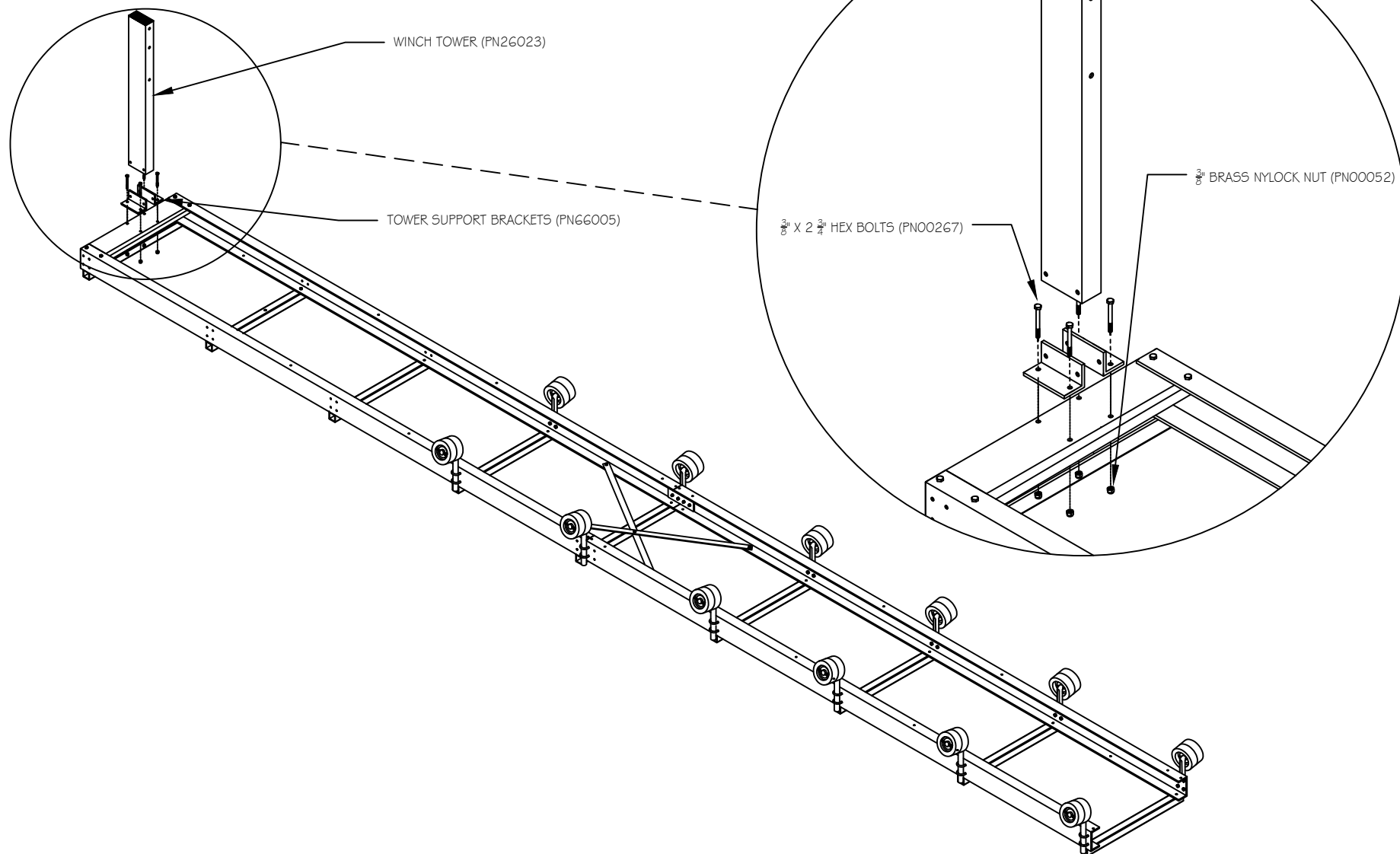
JAN. 08 / 2021

DRAWN BY
SW

PG
4

S4 HARDWARE

- ATTACH TOWER SUPPORT BRACKETS USING FOUR $\frac{3}{8}$ " X 2 $\frac{3}{4}$ " HEX BOLTS AS SHOWN
- BEFORE TIGHTENING FULLY, ENSURE THE TOWER CAN FIT BETWEEN THE SUPPORT BRACKETS



FENDOCK

SINGLE ROLLER RAMP ASSEMBLY INSTRUCTIONS

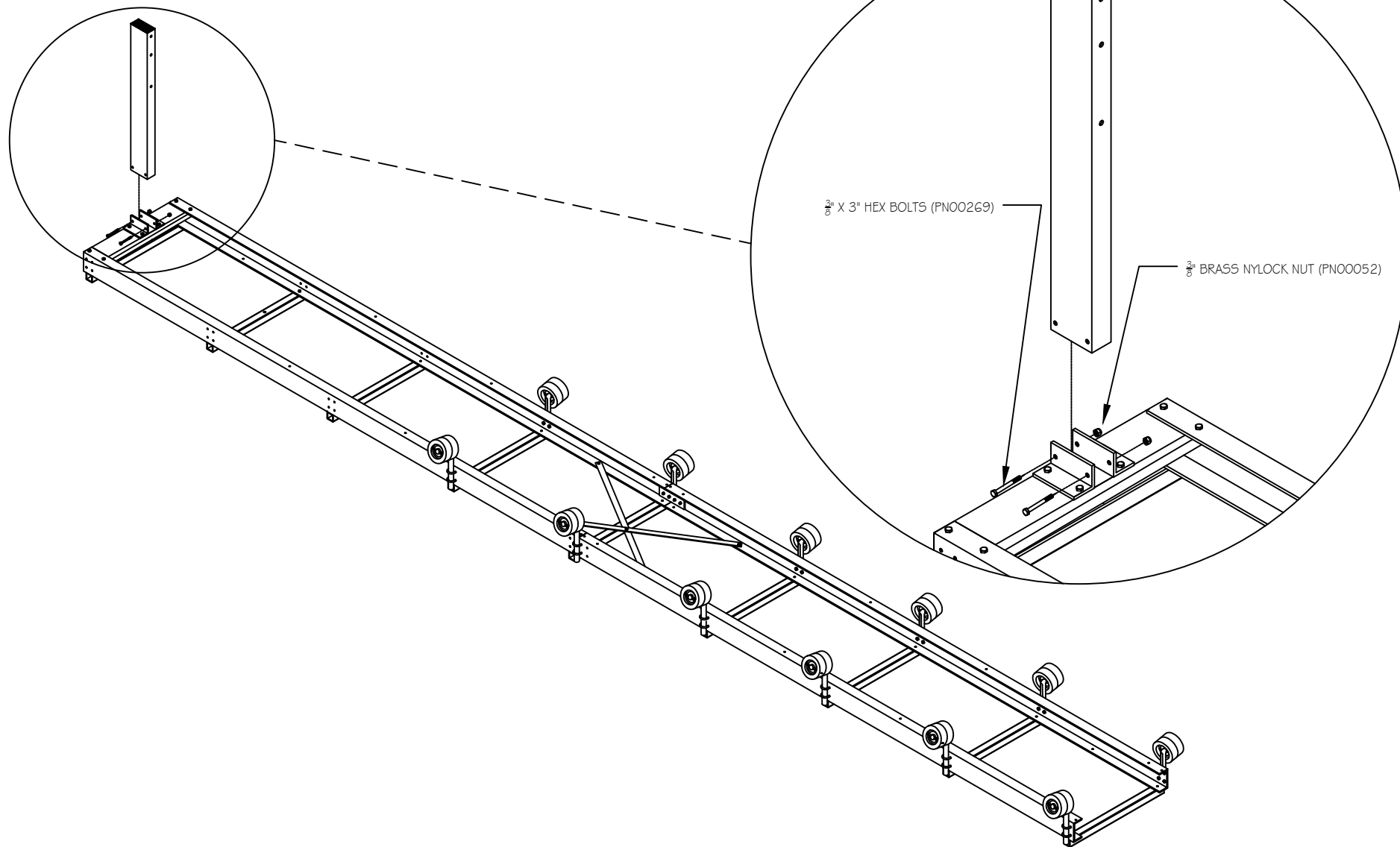
JAN. 08 / 2021

DRAWN BY
SW

PG
5

S5 HARDWARE

-ATTACH WINCH TOWER USING TWO $\frac{3}{8}$ " X 3" HEX BOLTS AND $\frac{3}{8}$ " BRASS NYLOCK NUTS AS SHOWN



FENDOCK

SINGLE ROLLER RAMP ASSEMBLY INSTRUCTIONS

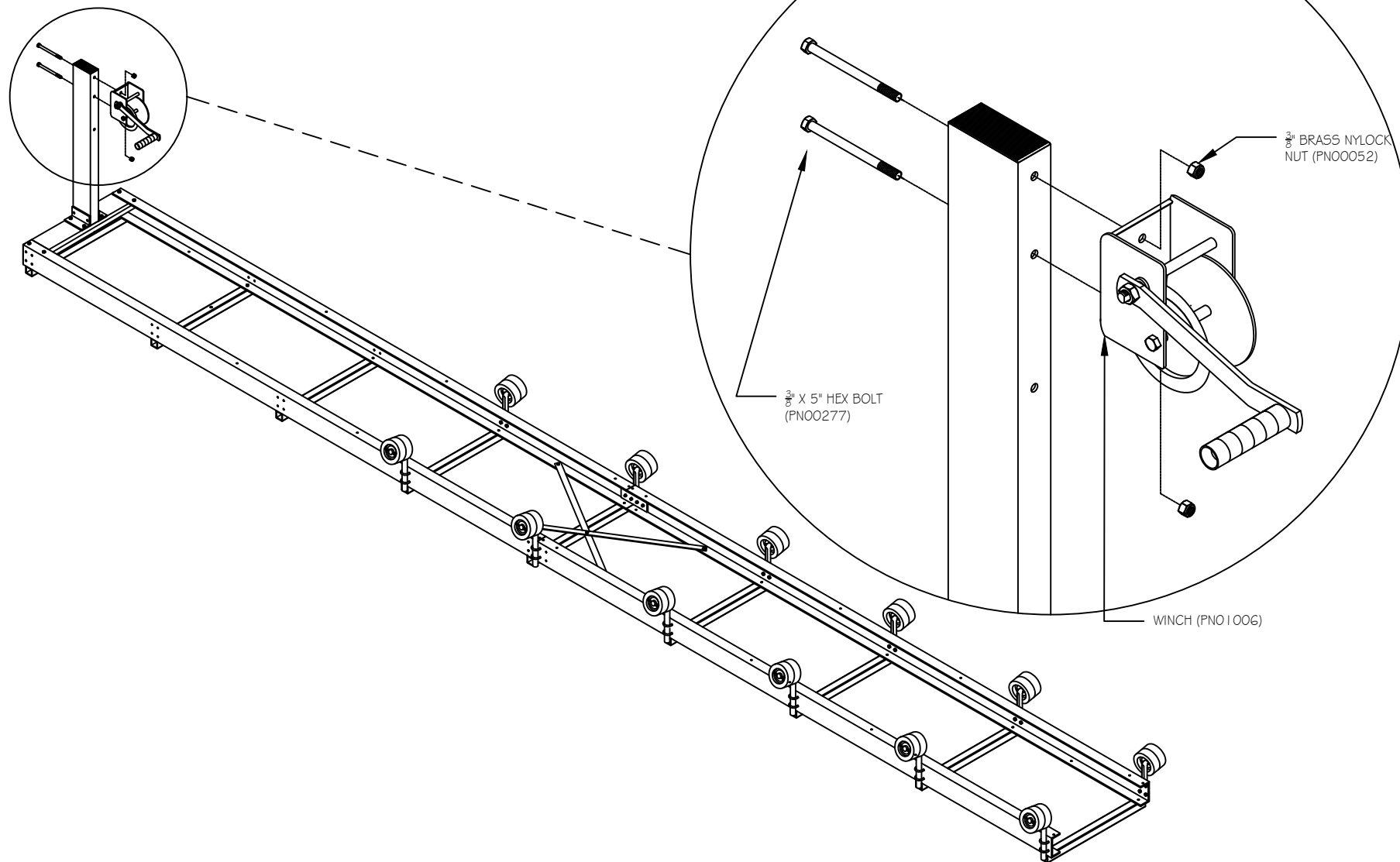
JAN. 08 / 2021

DRAWN BY
SW

PG
6

SG HARDWARE

-ATTACH WINCH USING TWO $\frac{3}{8}$ " X 5" HEX BOLTS. ENSURE NUTS ARE ON THE WINCH SIDE AS SHOWN



FENDOCK

SINGLE ROLLER RAMP ASSEMBLY INSTRUCTIONS

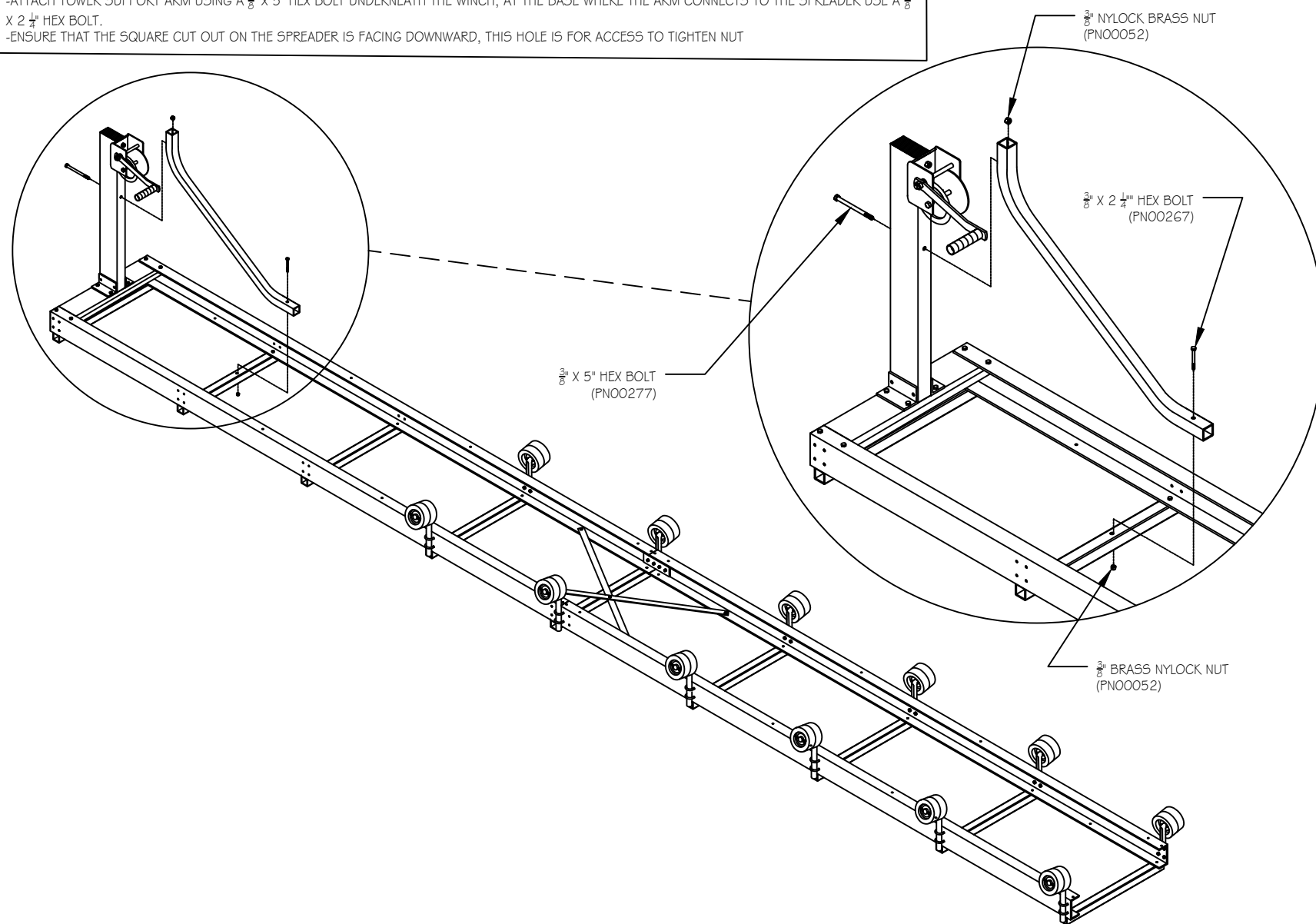
JAN. 08 / 2021

DRAWN BY
SW

PG
7

57 HARDWARE

- ATTACH TOWER SUPPORT ARM USING A $\frac{3}{8}$ " X 5" HEX BOLT UNDERNEATH THE WINCH, AT THE BASE WHERE THE ARM CONNECTS TO THE SPREADER USE A $\frac{3}{8}$ " X 2 $\frac{1}{4}$ " HEX BOLT.
- ENSURE THAT THE SQUARE CUT OUT ON THE SPREADER IS FACING DOWNWARD, THIS HOLE IS FOR ACCESS TO TIGHTEN NUT



FENDOCK

SINGLE ROLLER RAMP ASSEMBLY INSTRUCTIONS

JAN. 08 / 2021

DRAWN BY
SW

PG
8