



CNC
INDUSTRIES LTD.

**PREMIUM
COMPONENTS FOR
CATERPILLAR®
D11 DOZER**

COMPONENT IDENTIFICATION

RIPPER REBUILD KITS

SINGLE

MULTI

BLADE REBUILD KITS



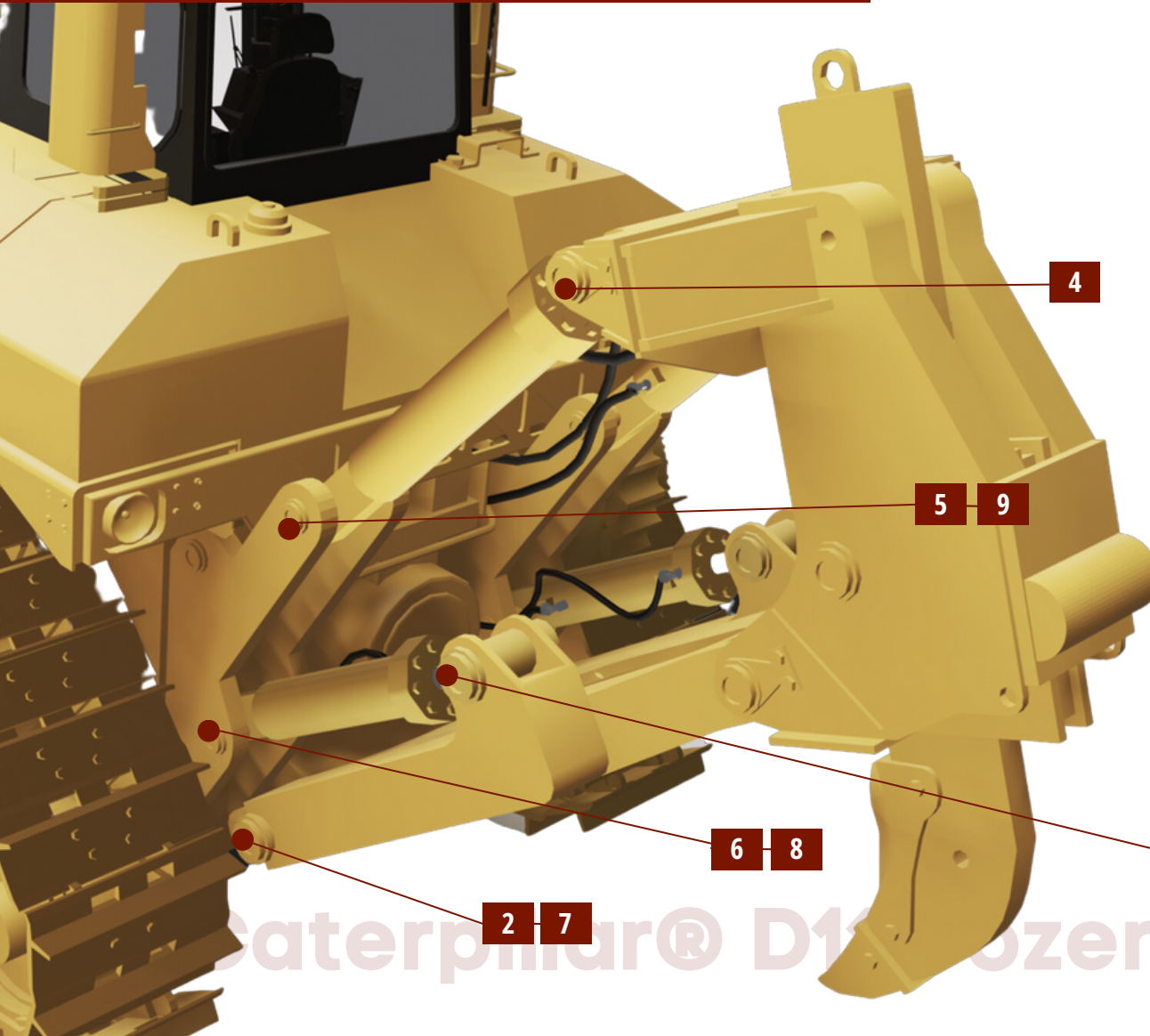
Caterpillar® D11 Dozer



+1 (780) 469-2346
www.cncindustries.com
sales@cncindustries.com
3291 8 St, Nisku, AB T9E 8T3

RIPPER REBUILD KITS

D11 SINGLE RIPPER REBUILD KIT



CNC 3-097 - OEM 4T2805 1
 DESCRIPTION: PIN QTY 2
 LOCATION: RIPPER CARRIAGE ASSY TO RIPPER FRAME



CNC 3-097 - OEM 4T2805 2
 DESCRIPTION: PIN QTY 2
 LOCATION: RIPPER FRAME TO DOZER FRAME



CNC 3-036 - OEM 105-5448 3
 DESCRIPTION: PIN QTY 2
 LOCATION: RIPPER FRAME TO RIPPER LIFT CYL.



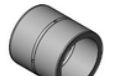
CNC 3-1948 - OEM 130-5355 4
 DESCRIPTION: PIN QTY 2
 LOCATION: RIPPER TILT CYL. TO RIPPER CARRIAGE ASSY



CNC 3-1945 - OEM 132-0055 5
 DESCRIPTION: PIN QTY 2
 LOCATION: RIPPER TILT CYL. TO DOZER FRAME



CNC 3-095 - OEM 9J2290 6
 DESCRIPTION: PIN QTY 2
 LOCATION: RIPPER LIFT CYL. TO DOZER FRAME



CNC 3-526 - OEM 3T8458 7
 DESCRIPTION: BUSHING QTY 4
 LOCATION: DOZER FRAME TO RIPPER FRAME (DF)



CNC 3-528 - OEM 3T8459 8
 DESCRIPTION: BUSHING QTY 4
 LOCATION: DOZER FRAME TO RIPPER LIFT CYL.(DF)



CNC 3-1805 - OEM 4T9751 9
 DESCRIPTION: BUSHING QTY 4
 LOCATION: CASE TO RIPPER TILT CYL (DF)



CNC 3-493 - OEM 9J1914 10
 DESCRIPTION: BUSHING QTY 4
 LOCATION: RIPPER FRAME TO RIPPER CARRIAGE (RF)



CATERPILLAR® D11 DOZER
 D11 SINGLE RIPPER REBUILD KIT

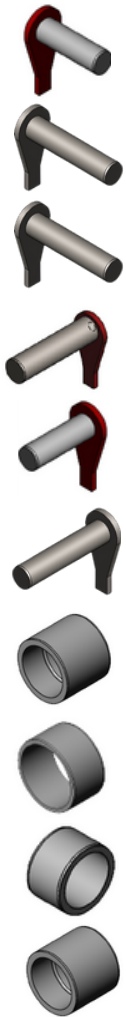
Caterpillar® D11 Dozer



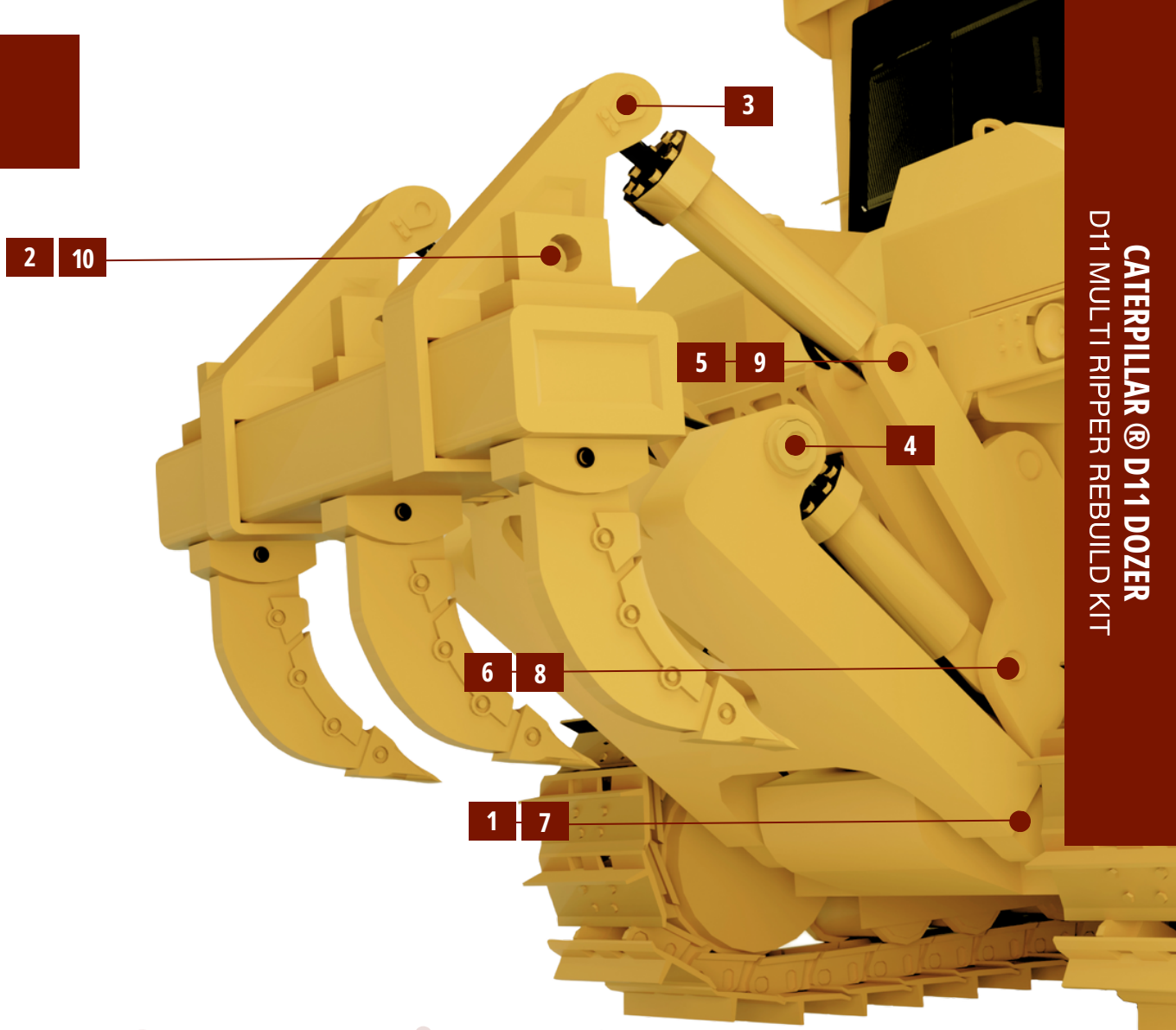
+1 (780) 469-2346
 www.cncindustries.com
 sales@cncindustries.com
 3291 8 St, Nisku, AB T9E 8T3

RIPPER REBUILD KITS

D11 MULTI RIPPER REBUILD KIT



- 1** **CNC 3-097 - OEM 4T2805**
 DESCRIPTION: PIN QTY 2
 LOCATION: RIPPER FRAME TO DOZER FRAME
- 2** **CNC 3-2803 - OEM 4T8901**
 DESCRIPTION: PIN QTY 2
 LOCATION: RIPPER FRAME TO RIPPER BEAM ASSY.
- 3** **CNC 3-5077 - OEM 6J8422**
 DESCRIPTION: PIN QTY 2
 LOCATION: RIPPER TILT CYL. TO RIPPER BEAM ASSY.
- 4** **CNC 3-036 - OEM 105-5448**
 DESCRIPTION: PIN QTY 2
 LOCATION: RIPPER TILT CYL TO CASE
- 5** **CNC 3-1945 - OEM 132-0055**
 DESCRIPTION: PIN QTY 2
 LOCATION: RIPPER TILT CYL TO CASE
- 6** **CNC 3-095 - OEM 9J2290**
 DESCRIPTION: PIN QTY 2
 LOCATION: RIPPER LIFT CYL TO DOZER FRAME
- 7** **CNC 3-526 - OEM 3T8458**
 DESCRIPTION: BUSHING QTY 4
 LOCATION: DOZER FRAME TO RIPPER FRAME (DF)
- 8** **CNC 3-528 - OEM 3T8459**
 DESCRIPTION: BUSHING QTY 4
 LOCATION: DOZER FRAME TO RIPPER LIFT CYL. (DF)
- 9** **CNC 3-1805 - OEM 4T9751**
 DESCRIPTION: BUSHING QTY 4
 LOCATION: CASE TO RIPPER TILT CYL (DF)
- 10** **CNC 3-1947 - OEM 128-6121**
 DESCRIPTION: BUSHING QTY 4
 LOCATION: RIPPER FRAME TO RIPPER BEAM ASSY. (RF)



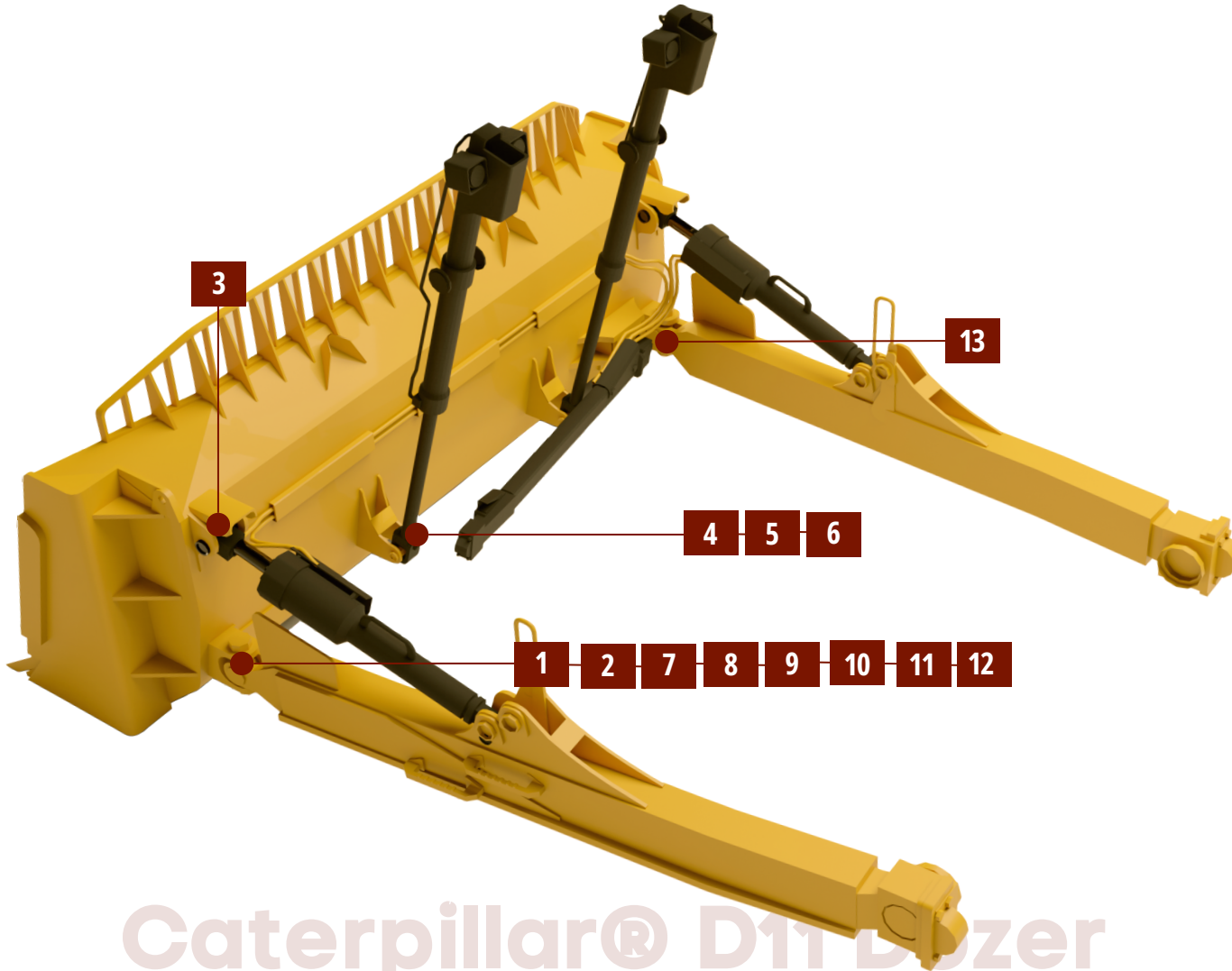
CATERPILLAR® D11 DOZER
 D11 MULTI RIPPER REBUILD KIT

Caterpillar® D11 Dozer



+1 (780) 469-2346
www.cncindustries.com
sales@cncindustries.com
 3291 8 St, Nisku, AB T9E 8T3

BLADE REBUILD KIT

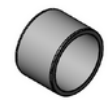


Caterpillar® D11 Dozer

CNC 3-872 - OEM 145-8737

DESCRIPTION: BUSHING QTY 2
LOCATION: PUSH ARM CONNECTOR TO BUCKET, RH

1



CNC 3-872 - OEM 145-8737

DESCRIPTION: BUSHING QTY 2
LOCATION: PUSH ARM CONNECTOR TO BUCKET, LH

2



CNC 3-088 - OEM 9J2593

DESCRIPTION: PIN QTY 2
LOCATION: TILT CYLINDER TO BLADE

3



CNC 3-065 - OEM 9W2939

DESCRIPTION: PIN QTY 2
LOCATION: BLADE TO BLADE CONNECTOR

4



CNC 3-065 - OEM 9W2939

DESCRIPTION: PIN QTY 2
LOCATION: BLADE TO BLADE CONNECTOR

5



CNC 3-5099 - OEM 4T3797

DESCRIPTION: CONNECTOR QTY 2
LOCATION: LIFT CYLINDER TO BLADE

6



CNC 3-873 - OEM 130-3434

DESCRIPTION: PIN QTY 2
LOCATION: PUSH ARM CONNECTOR TO BLADE

7



CNC 3-873 - OEM 130-3434

DESCRIPTION: PIN QTY 2
LOCATION: PUSH ARM CONNECTOR TO PUSH ARM

8



CNC 3-5100 - OEM 142-2075

DESCRIPTION: SHIM QTY 12
LOCATION: PUSH ARM CONNECTOR

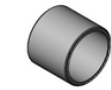
9



CNC 3-872 - OEM 145-8737

DESCRIPTION: BUSHING QTY 2
LOCATION: PUSH ARM, LH

10



CNC 3-872 - OEM 145-8737

DESCRIPTION: BUSHING QTY 2
LOCATION: PUSH ARM, RH

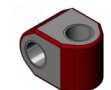
11



CNC 3-922 - OEM 130-3436

DESCRIPTION: CONNECTOR QTY 2
LOCATION: PUSH ARM TO BLADE

12



CNC 3-5098 - OEM 8P6048

DESCRIPTION: TRUNNION BALL QTY 1
LOCATION: STABILIZER LINK TO BLADE

13



CATERPILLAR® D11 DOZER



+1 (780) 469-2346
www.cncindustries.com
sales@cncindustries.com
3291 8 St, Nisku, AB T9E 8T3