

**EZ Touch!**  
Electronic musical instruments  
**Otamatone**

明和電機

**Instruction Manual**

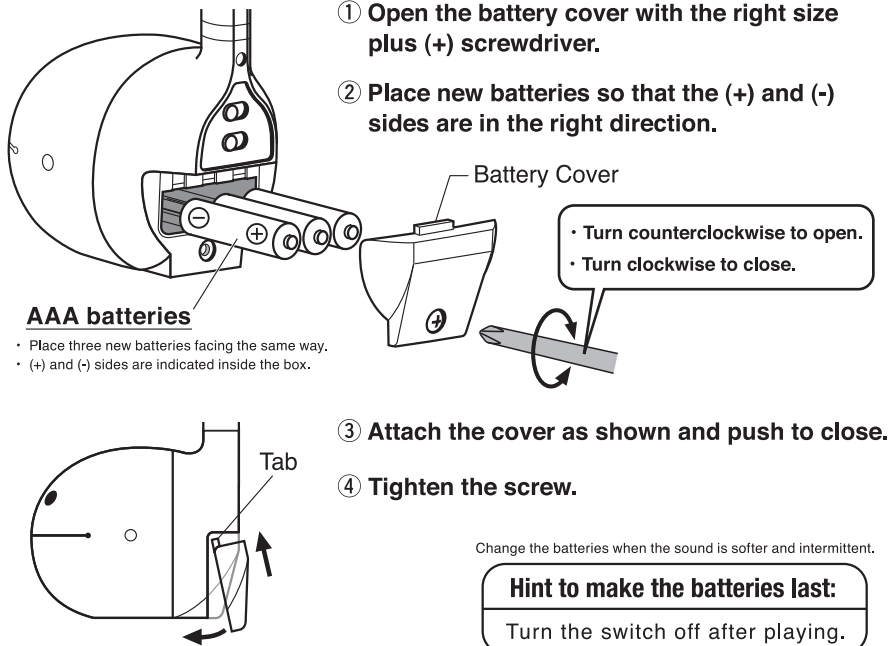
**Note:**  
• This product does not speak.  
• This product does not play the exact twelve notes.  
• There are some individual range and sound variations.

**STEP ① Set up the Otamatone for playing.**

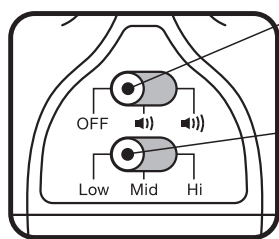
**STEP ② Hold the Otamatone.**

**How to change batteries:**

**Required batteries: AAA x 3** • Test batteries are included.  
• Alkaline batteries are recommended.

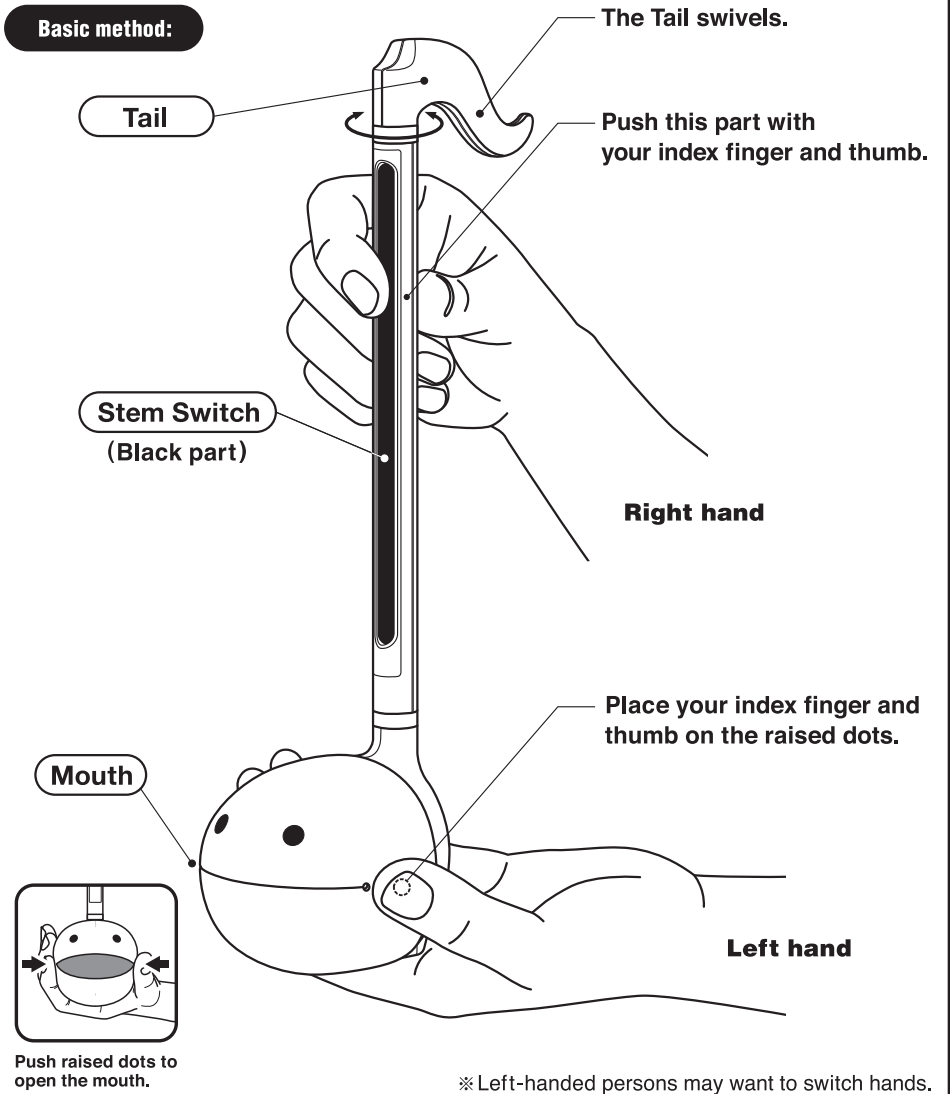


**Selection of Volume and Octave:**



**Volume Switch:** Choose soft or loud.  
OFF / Soft / Loud  
**Octave Switch:** Set to the desired level.  
Low / Medium / Hi

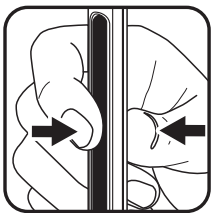
**Basic method:**



**STEP ③ Let's make some sounds!**

※ The Octave switch is set to Mid in the following instructions.

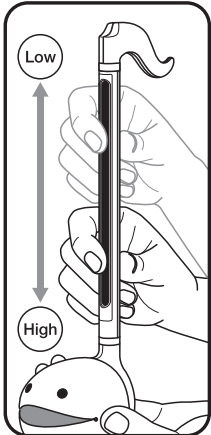
**Push Technique:**



Push the Stem Switch anywhere!  
This will make "mmm" sound.  
Push different places and the sound will change too.

**Hint:** Push the Stem Switch with your index finger and thumb.

**Slide Technique:**



Push and hold the Stem Switch.  
Slide the fingers up and down.  
This will make "peooow" sound.

**Hint:** Push a bit harder and slide to make sure the sound does not break.  
After mastering the technique, you can adjust the pressure.

※ Change the Octave switch to try a different pitch.

**Mouth Technique:**



While pushing the Stem Switch, open and close the mouth.  
The sound changes from "woo" to "wah."  
Repeat this to make "wah wah wah."

**Hint:** This will vary the sound.  
The opening and the closing of the mouth makes everyone happy!

**STEP ④ Let's play a song!**

**Let's play a song using the attached Otamatone practice sheet!**



Otamatone does not have any marker to strike exact notes like a keyboard.  
Place the unit on the practice sheet as shown here and push the Stem Switch where the numbers are indicated on the sheet.  
You are going to play:  
Beethoven - Symphony No. 9 in D minor, Op. 125 "Choral."

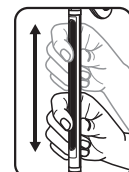
**Hint:** When you get the hang of it, hold the unit as in Step 2 and play.

**Try different techniques!**



**Vibrato:**

A tremulous or pulsating effect produced in an instrumental or vocal tone. Vibrate the Stem while doing the Push technique.



**Portamento:**

A continuous gliding movement from one tone to another. Play songs as you slide your fingers. It sounds like a grass whistle.



**Wah-wah:**

A musical special effect to produce voice-like tones. Open and close the mouth while pushing the Stem Switch.

**Otamatone Music Classes offered on our home pages!!**



You can see videos showing hints and techniques!

<http://www.maywadenki.com/otamatone>