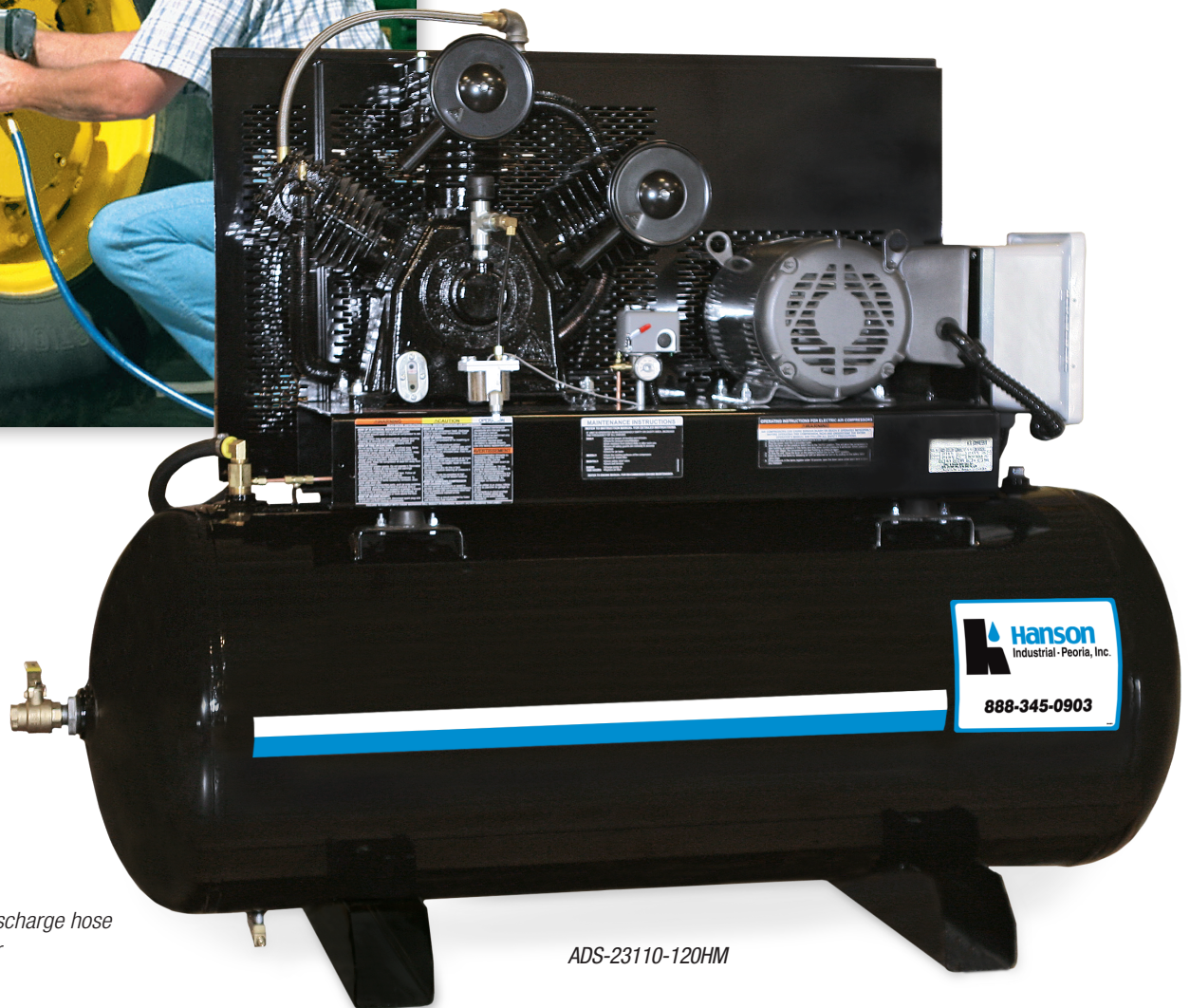


# M Series Simplex | Two Stage Electric

## 80 & 120-Gallon Horizontal & Vertical



The ultimate in air compressors, the M Series comes complete with all available options to meet the most demanding industrial air needs. Available with either a horizontal or vertical tank and multiple industrial low RPM motor configurations.



### Compressor Pump

- Two stage cast iron
- Splash lubricated
- Stainless-steel braided discharge hose
- Large canister intake filter
- Oil level sight indicator

### Motor

- Industrial low RPM motor
- Magnetic start for thermal overload protection

### Frame

- Powder coated ASME coded 80 or 120-gallon receiver tank
- 3/16-inch base plate to reduce vibration
- Powder coated totally enclosed heavy-duty belt guard

### Components

- ASME safety valves
- Tank pressure gauge
- Hour meter
- Large fly wheel
- Intake filter/silencer
- Tank shut-off valve



# M Series Simplex | Two Stage Electric

## 80 & 120-Gallon Horizontal & Vertical



### Horizontal Models

Model Number	HP	Tank Size	Pump RPM	Voltage/Amperage/Phase	CFM Delivered @ 175 PSI	Dimensions (LxWxH)	Bolt Down Dimensions (LxW)	Ship Wt.	Net Wt.
ACS-23105-80HM	5.0	80-gallon	860	230V, 23.0A, 1 Phase	18.0	52x26.5x53in.	20.75x23.5in.	615 lb.	544 lb.
ACS-20305-80HM	5.0	80-gallon	860	200V, 16.1A, 3 Phase	18.0	52x26.5x53in.	20.75x23.5in.	615 lb.	544 lb.
ACS-23305-80HM	5.0	80-gallon	860	230V, 13.8A, 3 Phase	18.0	52x26.5x53in.	20.75x23.5in.	615 lb.	544 lb.
ACS-46305-80HM	5.0	80-gallon	860	460V, 6.9A, 3 Phase	18.0	52x26.5x53in.	20.75x23.5in.	615 lb.	544 lb.
ACS-23175-80HM	7.5	80-gallon	1250	230V, 31.0A, 1 Phase	23.5	52x26.5x53in.	20.75x23.5in.	780 lb.	709 lb.
ACS-20375-80HM	7.5	80-gallon	1250	200V, 23.0A, 3 Phase	23.5	52x26.5x53in.	20.75x23.5in.	780 lb.	709 lb.
ACS-23375-80HM	7.5	80-gallon	1250	230V, 20.0A, 3 Phase	23.5	52x26.5x53in.	20.75x23.5in.	780 lb.	709 lb.
ACS-46375-80HM	7.5	80-gallon	1250	460V, 10.0A, 3 Phase	23.5	52x26.5x53in.	20.75x23.5in.	780 lb.	709 lb.
ADS-23110-120HM	10.0	120-gallon	990	230V, 39.0A, 1 Phase	34.2	74x26.5x58in.	34.5x23.5in.	890 lb.	811 lb.
ADS-20310-120HM	10.0	120-gallon	990	200V, 30.8A, 3 Phase	34.2	74x26.5x58in.	34.5x23.5in.	890 lb.	811 lb.
ADS-23310-120HM	10.0	120-gallon	990	230V, 26.8A, 3 Phase	34.2	74x26.5x58in.	34.5x23.5in.	890 lb.	811 lb.
ADS-46310-120HM	10.0	120-gallon	990	460V, 13.4A, 3 Phase	34.2	74x26.5x58in.	34.5x23.5in.	890 lb.	811 lb.
AES-20315-120HM	15.0	120-gallon	990	200V, 44.0A, 3 Phase	46.5	74x26.5x58in.	34.5x23.5in.	935 lb.	856 lb.
AES-23315-120HM	15.0	120-gallon	990	230V, 38.0A, 3 Phase	46.5	74x26.5x58in.	34.5x23.5in.	935 lb.	856 lb.
AES-46315-120HM	15.0	120-gallon	990	460V, 19.0A, 3 Phase	46.5	74x26.5x58in.	34.5x23.5in.	935 lb.	856 lb.

### Vertical Models

Model Number	HP	Tank Size	Pump RPM	Voltage/Amperage/Phase	CFM Delivered @ 175 PSI	Dimensions (LxWxH)	Bolt Down Dimensions (LxW)	Ship Wt.	Net Wt.
ACS-23105-80VM	5.0	80-gallon	860	230V, 23.0A, 1 Phase	18.0	33x25x73in.	15.63x15.63in.	695 lb.	544 lb.
ACS-20305-80VM	5.0	80-gallon	860	200V, 16.1A, 3 Phase	18.0	33x25x73in.	15.63x15.63in.	695 lb.	544 lb.
ACS-23305-80VM	5.0	80-gallon	860	230V, 13.8A, 3 Phase	18.0	33x25x73in.	15.63x15.63in.	695 lb.	544 lb.
ACS-46305-80VM	5.0	80-gallon	860	460V, 6.9A, 3 Phase	18.0	33x25x73in.	15.63x15.63in.	695 lb.	544 lb.
ACS-23175-80VM	7.5	80-gallon	1250	230V, 31.0A, 1 Phase	23.5	33x25x73in.	15.63x15.63in.	780 lb.	709 lb.
ACS-20375-80VM	7.5	80-gallon	1250	200V, 23.0A, 3 Phase	23.5	33x25x73in.	15.63x15.63in.	780 lb.	709 lb.
ACS-23375-80VM	7.5	80-gallon	1250	230V, 20.0A, 3 Phase	23.5	33x25x73in.	15.63x15.63in.	780 lb.	709 lb.
ACS-46375-80VM	7.5	80-gallon	1250	460V, 10.0A, 3 Phase	23.5	33x25x73in.	15.63x15.63in.	780 lb.	709 lb.

### Accessories:

Part Number	Description	Fits Models
3-0312	Pump - Replacement pump	ACS horizontal & vertical models
3-0313	Pump - Replacement pump	ADS models
3-0314	Pump - Replacement pump	AES models



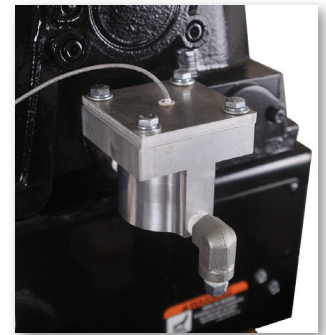
# M Series | Standard Features



*These standard features are what sets the M Series air compressors apart from our standard line-up.*



Air-cooled after cooler removes up to 65% of moisture and drops temperature within 10°F of ambient



Low oil sensor does not allow unit to start when oil levels fall below an adequate level



Vibration isolator pads protect the tank from stress



Tank drain automatically drains liquid from the air receiver

ACS-23105-80VM