

M Series Duplex | Two Stage Electric 120-Gallon Horizontal

The ultimate in air compressors, the M Series comes complete with all available options to meet the most demanding industrial air needs. Available with a horizontal tank and multiple industrial low RPM motor configurations.



Compressor Pump

- Two stage cast iron
- Splash lubricated
- Stainless-steel braided discharge hose
- Large canister intake filter
- Oil level sight indicator

Motor

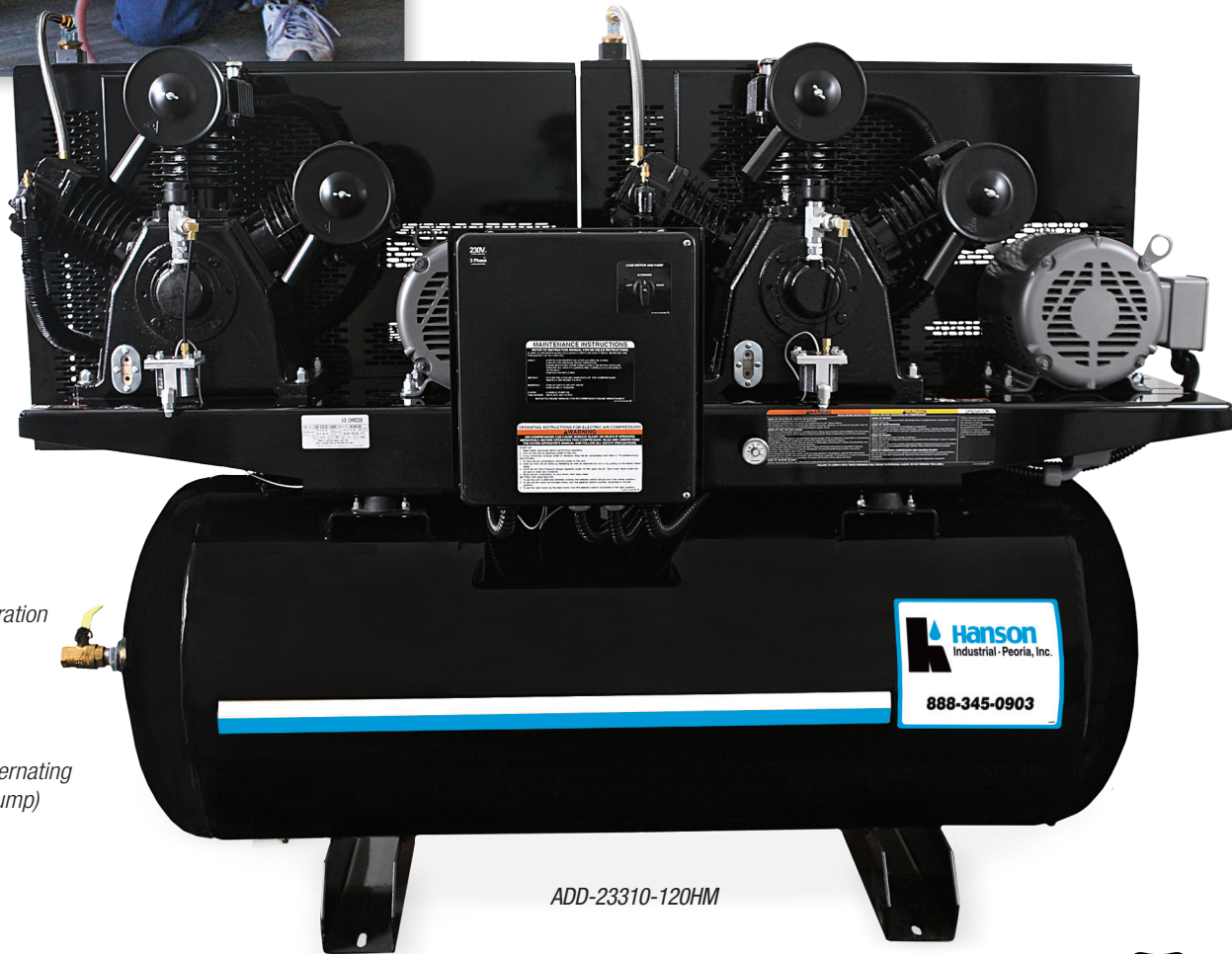
- Industrial low RPM motor
- Magnetic start for thermal overload protection

Frame

- Powder coated ASME coded 120-gallon receiver tank
- 3/16-inch base plate to reduce vibration
- Powder coated totally enclosed heavy-duty belt guard

Components

- 3 position switch - compressor 1 (lead motor pump), automatic alternating and compressor 2 (lead motor pump)
- ASME safety valves
- Tank pressure gauge
- Hour meter
- Large fly wheel
- Intake filter/silencer
- Tank shut-off valve



ADD-23310-120HM



M Series Duplex | Two Stage Electric 120-Gallon Horizontal



Model Number	HP	Tank Size	Pump RPM	Voltage/Amperage/Phase	CFM Delivered @ 175 PSI	Dimensions (LxWxH)	Bolt Down Dimensions (LxW)	Ship Wt.	Net Wt.
ACD-23105-120HM	5.0	120-gallon	860	230V, 46.0A, 1 Phase	36.0	74x26.5x58in.	34.5x23.5in.	950 lb.	871 lb.
ACD-20305-120HM	5.0	120-gallon	860	200V, 32.2A, 3 Phase	36.0	74x26.5x58in.	34.5x23.5in.	950 lb.	871 lb.
ACD-23305-120HM	5.0	120-gallon	860	230V, 27.6A, 3 Phase	36.0	74x26.5x58in.	34.5x23.5in.	950 lb.	871 lb.
ACD-46305-120HM	5.0	120-gallon	860	460V, 13.8A, 3 Phase	36.0	74x26.5x58in.	34.5x23.5in.	950 lb.	871 lb.
ACD-23175-120HM	7.5	120-gallon	1250	230V, 62.0A, 1 Phase	46.4	74x26.5x58in.	34.5x23.5in.	1000 lb.	921 lb.
ACD-20375-120HM	7.5	120-gallon	1250	200V, 46.0A, 3 Phase	46.4	74x26.5x58in.	34.5x23.5in.	1000 lb.	921 lb.
ACD-23375-120HM	7.5	120-gallon	1250	230V, 40.0A, 3 Phase	46.4	74x26.5x58in.	34.5x23.5in.	1000 lb.	921 lb.
ACD-46375-120HM	7.5	120-gallon	1250	460V, 20.0A, 3 Phase	46.4	74x26.5x58in.	34.5x23.5in.	1000 lb.	921 lb.
ADD-23110-120HM	10.0	120-gallon	990	230V, 78.0A, 1 Phase	68.4	74x26.5x58in.	34.5x23.5in.	1300 lb.	1221 lb.
ADD-20310-120HM	10.0	120-gallon	990	200V, 61.6A, 3 Phase	68.4	74x26.5x58in.	34.5x23.5in.	1300 lb.	1221 lb.
ADD-23310-120HM	10.0	120-gallon	990	230V, 53.6A, 3 Phase	68.4	74x26.5x58in.	34.5x23.5in.	1300 lb.	1221 lb.
ADD-46310-120HM	10.0	120-gallon	990	460V, 26.8A, 3 Phase	68.4	74x26.5x58in.	34.5x23.5in.	1300 lb.	1221 lb.
AED-20315-120HM	15.0	120-gallon	810	200V, 88.0A, 3 Phase	93.0	74x26.5x58in.	34.5x23.5in.	1650 lb.	1571 lb.
AED-23315-120HM	15.0	120-gallon	810	230V, 76.0A, 3 Phase	93.0	74x26.5x58in.	34.5x23.5in.	1650 lb.	1571 lb.
AED-46315-120HM	15.0	120-gallon	810	460V, 38.0A, 3 Phase	93.0	74x26.5x58in.	34.5x23.5in.	1650 lb.	1571 lb.

Accessories:

Part Number	Description	Fits Models
3-0312	Pump - Replacement pump	ACD models
3-0313	Pump - Replacement pump	ADD models
3-0314	Pump - Replacement pump	AED models

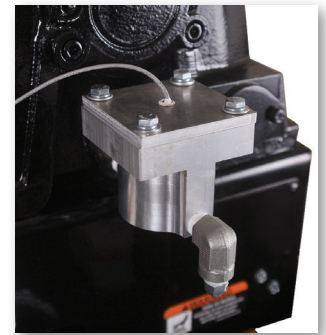
M Series | Standard Features



These standard features are what sets the M Series air compressors apart from our standard line-up.



Air-cooled after cooler removes up to 65% of moisture and drops temperature within 10°F of ambient



Low oil sensor does not allow unit to start when oil levels fall below an adequate level



Vibration isolator pads protect the tank from stress



Tank drain automatically drains liquid from the air receiver

ACS-23105-80VM