

# Concrete Sleepers



## BCP Building Products Locations

Bathurst  
18 Kirkcaldy St  
Phone 02 6331 2777

Dubbo  
58 Bourke St  
Phone 02 6882 1555

Wagga Wagga  
29 Pearson St  
Phone 02 6925 5133

# Concrete Sleepers

Concrete sleepers are a robust and long-lasting retaining wall solution, immune to white ant infestations and wood rot. This makes them a virtually maintenance-free choice for both residential and commercial landscaping needs.

## Smooth



Charcoal



Grey

## Woodgrain



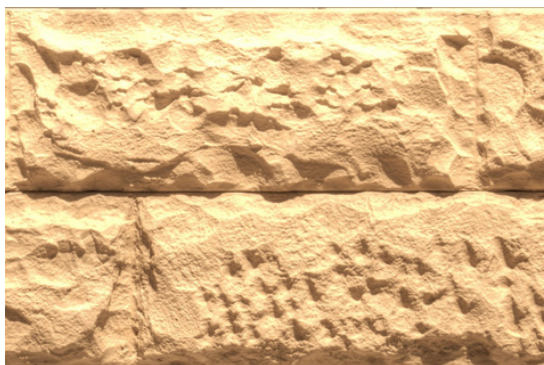
Charcoal

## Stackstone



Charcoal

## Rockface



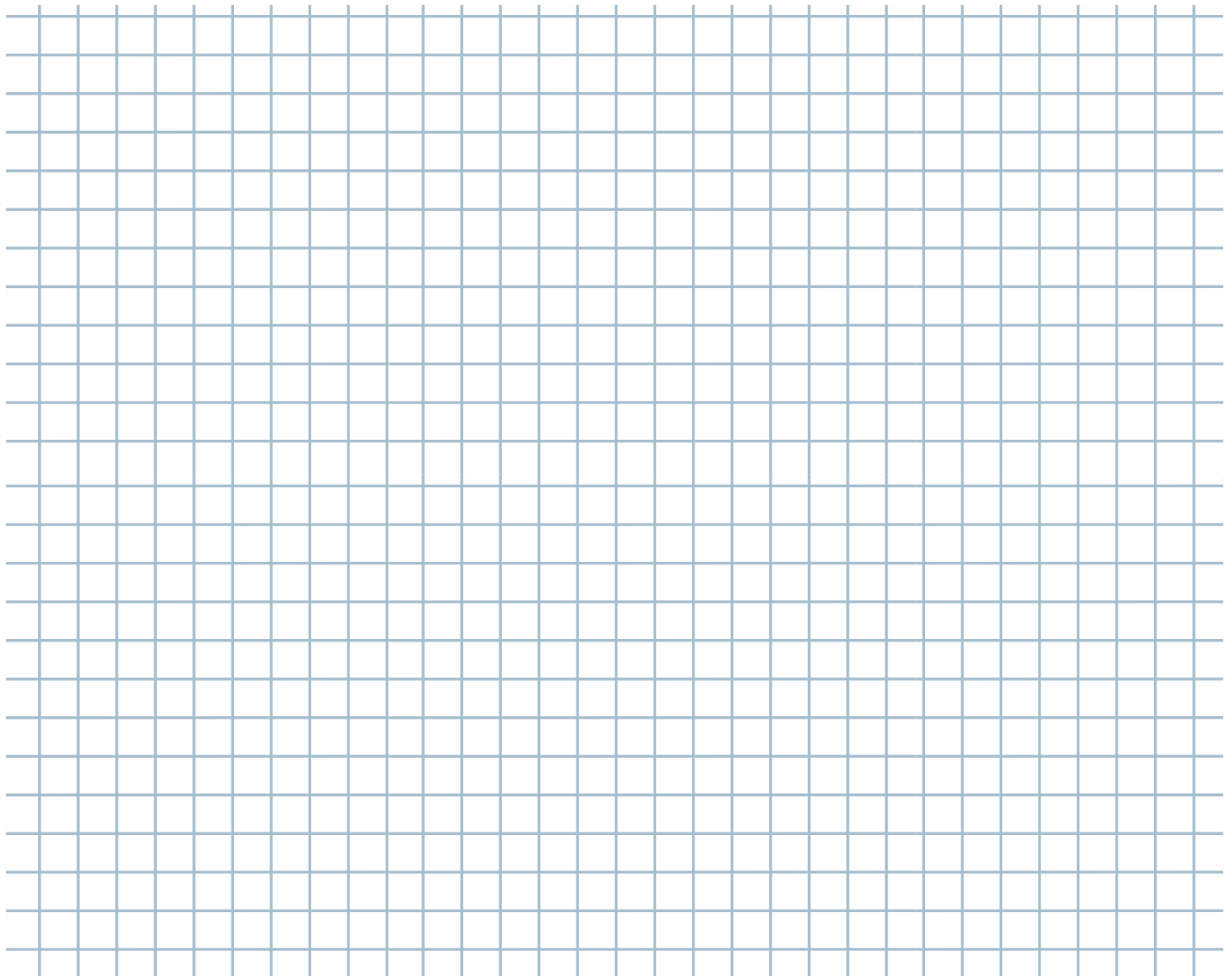
Cream



Charcoal

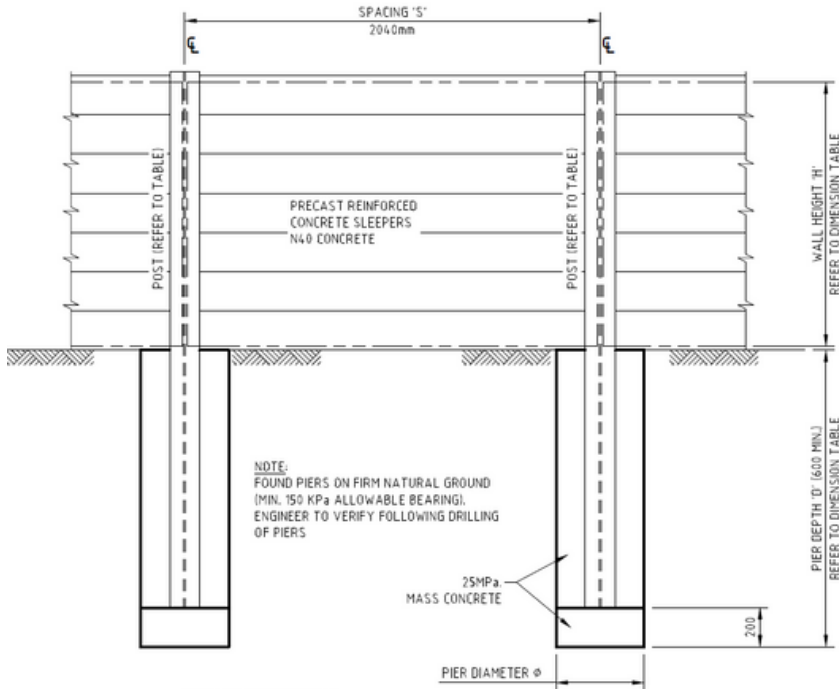
# Concrete Sleepers

Range	Colour	Dimension (LxHxW)
Smooth	Grey	2000x200x75mm 2400x200x120mm
Smooth	Charcoal	2000x200x75mm
Woodgrain	Charcoal	2000x200x75mm
Rockface	Cream Charcoal	2000x200x80mm 2400x200x130mm
Stackstone	Charcoal	2000x200x80mm 2400x200x130mm

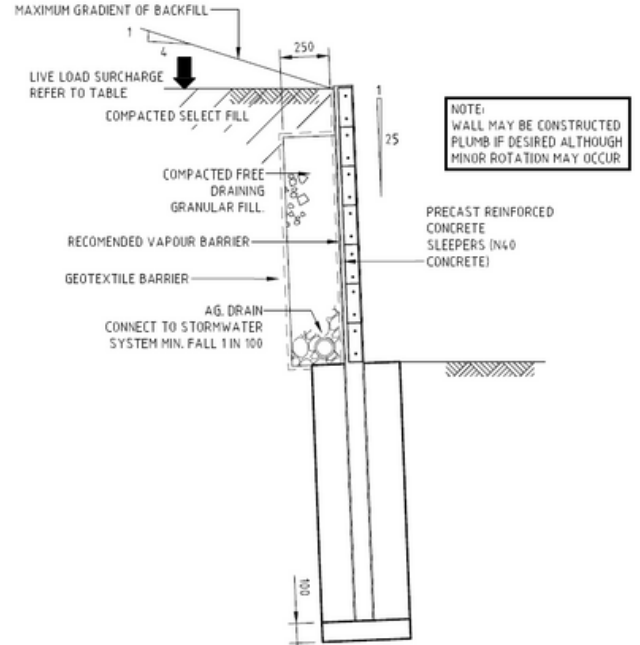


# Design Guide

Check your local council for construction or retaining wall requirements as additional engineer detailing may be required. Please note this is a typical wall design and final design and construction requirements may differ due to site conditions. If unsure please engage an engineer or experienced installer.



FRONT ELEVATION  
**TYPICAL RETAINING WALL ELEVATION**  
SCALE 1:20



**TYPICAL SECTION THROUGH RETAINING WALL**  
SCALE 1:20

DESIGN LIVE LOAD AND STRUCTURE CLASSIFICATION			
WALL HEIGHT	LEVEL BACKFILL	1:4 INCLINED BACKFILL	STRUCTURE CLASSIFICATION
< 1.5m	2.5 kPa	1.25 kPa	A
> 1.5M	5.0 kPa	2.5 kPa	B

DIMENSION TABLE										
SOIL	ELEMENT	WALL HEIGHT								
		600	800	1000	1200	1400	1600	1800	2000	2200
SAND OR GRAVEL LEVEL OR SLOPING BACKFILL	REINFORCEMENT	2-N12	2-N12	2-N12	2-N12	2-N12	2-N12	2-N12	2-N12	2-N12
	PIER DIAMETER $\phi$	300	300	300	300	300	300	450	450	450
	PIER DEPTH 'D'	800	1000	1200	1400	1600	1800	2000	2200	2400
	POST	100UC14,8	100UC14,8	100UC14,8	100UC14,8	100UC14,8	100UC14,8	150UC23,4	150UC23,4	150UC23,4
MEDIUM OR STIFF CLAY SLOPING BACKFILL	REINFORCEMENT	2-N12	2-N12	2-N12	2-N12	2-N12	-	-	-	-
	PIER DIAMETER $\phi$	300	300	300	300	300	-	-	-	-
	PIER DEPTH 'D'	800	1000	1200	1400	1600	-	-	-	-
	POST	100UC14,8	100UC14,8	100UC14,8	100UC14,8	100UC14,8	-	-	-	-
MEDIUM OR STIFF CLAY LEVEL BACKFILL	REINFORCEMENT	2-N12	2-N12	2-N12	2-N12	2-N12	2-N12	-	-	-
	PIER DIAMETER $\phi$	300	300	300	300	300	300	-	-	-
	PIER DEPTH 'D'	800	1000	1200	1400	1600	1800	-	-	-
	POST	100UC14,8	100UC14,8	100UC14,8	100UC14,8	100UC14,8	100UC14,8	-	-	-