

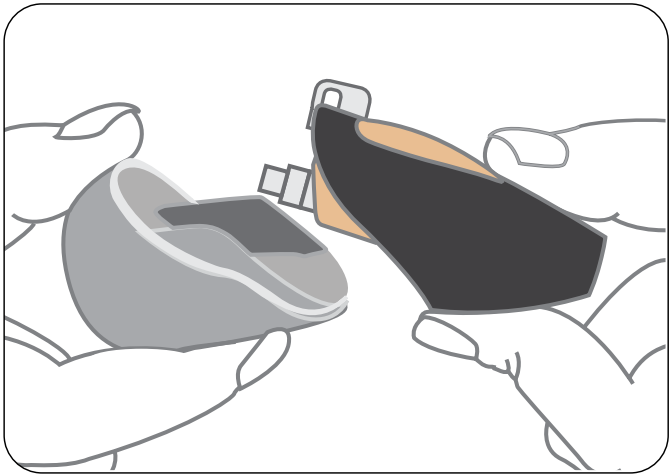
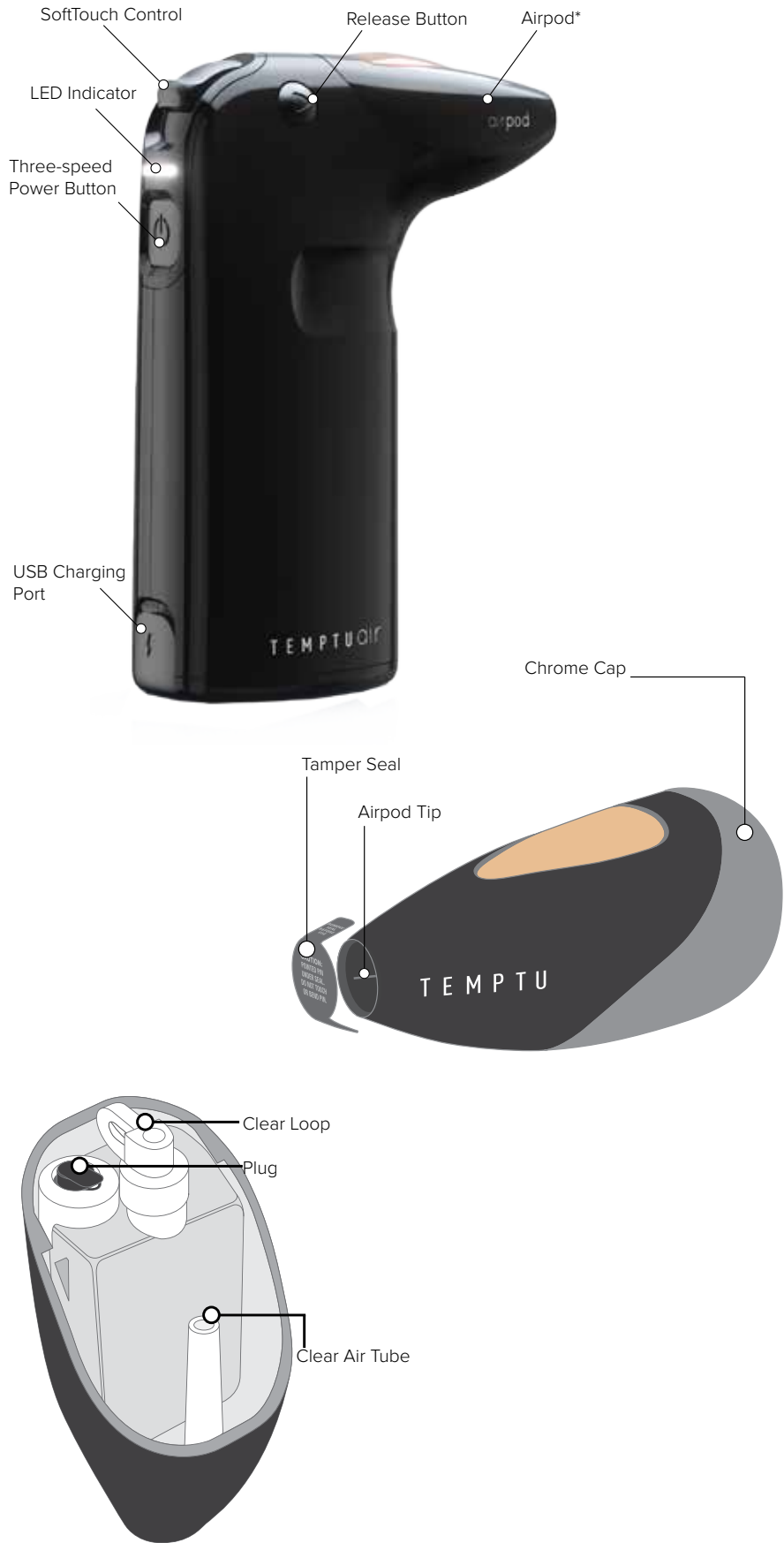
# TEMPTUair™

## Quick Start Guide

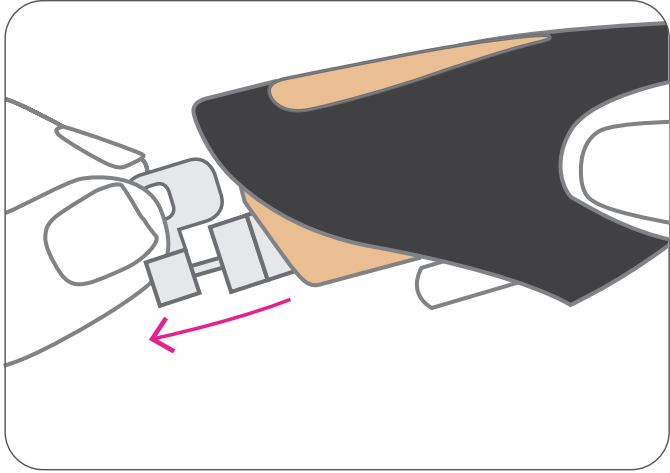


THE AIRBRUSH MAKEUP INNOVATION.  
The Power of a Pro in the Palm of Your Hand.

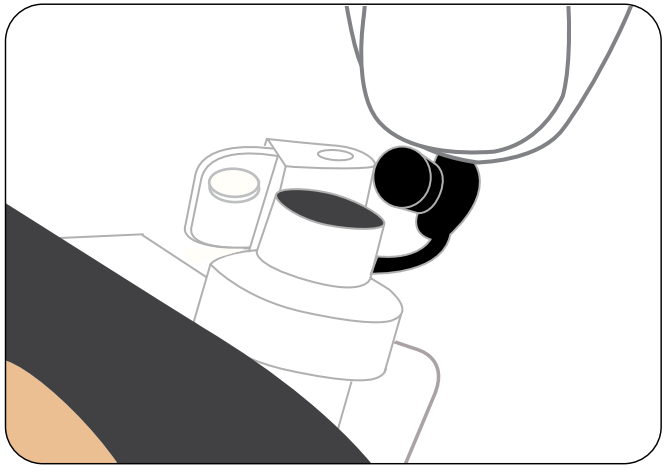
# Prepping your airpod™



Shake well before each use.  
Remove tamper seal and pull off chrome cap.

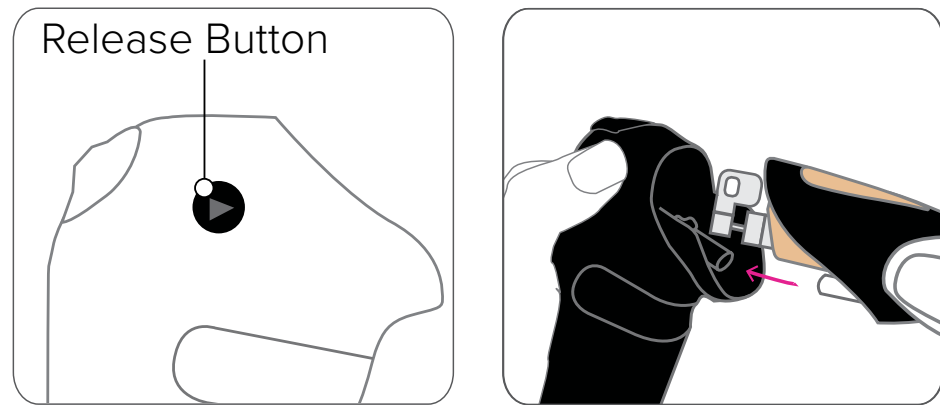


Firmly pull back on the clear loop to prime Airpod.



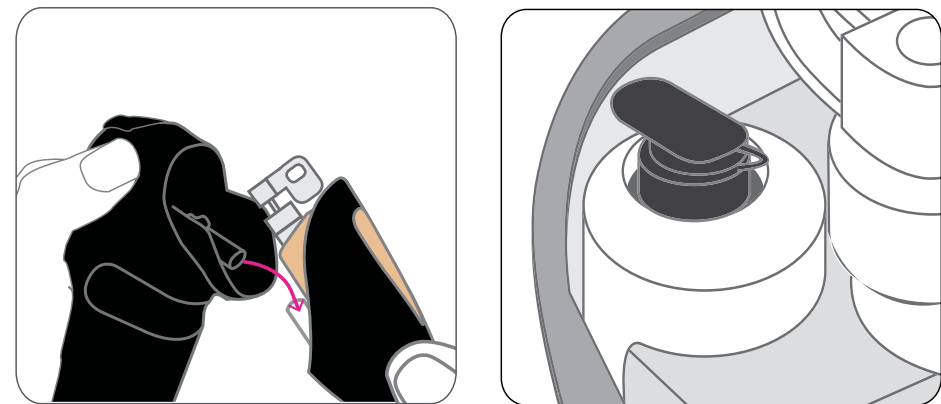
Gently open the black plug before attaching Airpod to the TEMPTU Air.

## Attaching airpod™



Press down on the release button and slide the Airpod, window side up, into the TEMPTU Air until it clicks into place.

## Detaching airpod™



Press down on the release button and pull downward on the Airpod to remove it from the Air.

Be sure to close the black plug on the Airpod when not in use.

## Power Up

Charge before first use. Hold down on the power button for two seconds to turn the TEMPTU Air on and off. Tap lightly on the button to switch speeds.



### Speed 1: Light Air

Detail work (e.g. spot correction)



### Speed 2: Medium Air

Foundation, blush and bronzer



### Speed 3: Full Air

Highlighter and larger areas (décolletage, arms)

All 3 lights will start blinking when the Air needs to be charged, which takes 1-2 hours to complete.

## SoftTouch Control

The SoftTouch Control regulates the amount of makeup released from the Airpod.



For makeup to spray, use pointer finger to hold down the SoftTouch Control.

Practice on your hand to get a feel for the application.

**Less is More.**

Always press down lightly when applying to the face. Only press down all the way on the SoftTouch Control

# Airbrush 101

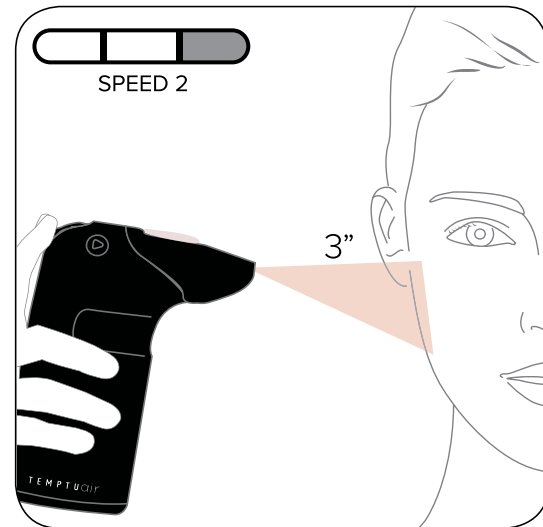
## Mastering a Flawless Finish

1. Hold the TEMPTU Air about four fingers from the face.
2. Always keep the Air moving in small, circular motions for a seamless, even finish.
3. Use a light touch with the SoftTouch Control when applying makeup to the face. TEMPTU makeup is weightless and buildable—a little goes a long way.
4. Stop and look between passes until reaching the desired level of coverage.

1-2 passes for sheer coverage

2-3 passes for medium coverage

3-4 passes for full coverage



### PRO TIPS TO AVOID A WET, HEAVY OR UNEVEN FINISH:

- Do not hold Air too close to skin
- Do not move in a back-and-forth motion
- Do not press too hard on the SoftTouch Control

### CHARGING

Charge the TEMPTU Air before first use, which should take between 1-2 hours to complete. Always close the cover to the USB Charging Port after charging is complete. Keep the USB Charging Port free of any water or other material. The indicator will flash repeatedly when the device is low on battery and while it is charging. It is safe to use the TEMPTU Air while it is charging. Keep the charging cord away from small children.

### MAINTENANCE AND SAFETY

Do not use abrasive cleansers or chemicals to clean the TEMPTU Air. The TEMPTU Air can be wiped down with a damp cloth or paper towel and standard glass cleaner. Do not put any part of the TEMPTU Air in water or in a dishwasher. Never attempt to open any part of the TEMPTU Air. Never put liquid cleansers inside the USB Charging Port or any other part of the TEMPTU Air.

Read all instructions before use. When using electrical products, especially when children are present, basic safety precautions should always be followed, including but not limited to the following:

**DANGER** – To reduce the risk of electrocution: Do not use the TEMPTU Air while bathing. Do not place or store the Air where it can fall or be pulled into a tub or sink full of water. Do not place or drop the air into water or another liquid. Do not reach for the Air that has fallen into water. If plugged in, unplug immediately. Keep the Air and the charging cord away from heated surfaces.

**WARNING** – To reduce the risk of burns, electrocution, fire or injury to persons: close supervision is necessary when the Air is used by, on or near children or people with disabilities. Use the TEMPTU Air only for intended use as described in this User Guide. Do not use attachments not recommended by the manufacturer. Never operate the Air if it is damaged, if it has a damaged charging cord or plug, if it is not working properly, if it has been dropped, or dropped into water. Call TEMPTU at 1-888-983-6788 so we can arrange for examination and replacement if needed. Do not use where oxygen is being administered. Air is believed to be safe for use with many common pacemakers. If you have any questions about usage with a pacemaker, consult with your physician or manufacturer of the pacemaker prior to use.

**AIRPOD WARNING: FOR EXTERNAL USE ONLY. AVOID SPRAYING IN EYES AND DISCONTINUE USE IF IRRITATION OCCURS.**

**CAUTION: DO NOT TOUCH POINTED PIN INSIDE AIRPOD TIP AREA. KEEP AWAY FROM SMALL CHILDREN.**

**DISPOSAL INFORMATION:** The crossed-out dustbin symbol indicates that this device should not be treated as household waste, but rather be brought to the appropriate collection point for recycling of electrical and electronic equipment.

This device complies with Part 15 of the FCC Rules. Operation is subject to the following two conditions: (1) this device may not cause harmful interference, and (2) this device must accept any interference received, including interference that may cause undesired operation.

### WARRANTY

At TEMPTU, Inc. ("TEMPTU") we believe very strongly in our product quality and in our quality assurance processes. Every unit is subjected to rigorous inspection and test procedures to ensure it meets our exacting specifications. Defective products are extremely rare. We do, however, examine returned products to help us identify product and/or process improvements. Temptu hereby warrants to the original purchaser of this product that the product shall be free from defects in materials and workmanship and shall be merchantable and fit for its intended purpose under normal personal consumer use and service for a period of two (2) years after the date of original purchase; provided, however, that such warranty shall not apply: (i) if the product has been modified, changed or altered; (ii) if the failure to perform is caused by the consumer, its agents or employees; (iii) the product used in a commercial (non-consumer) application; (iv) service has been performed on the product by any party other than a service provider expressly authorized by TEMPTU, (v) the product is damaged, worn or otherwise rendered inoperable through the action of the consumer. If, within two (2) years after the date of the original purchase, consumer notifies TEMPTU, in writing, that the product purchased by consumer has not performed in accordance with this warranty, and consumer returns the non-performing Product to TEMPTU, postage prepaid, TEMPTU shall, at no additional charge to consumer, and as consumer's sole and exclusive remedy, replace the non-performing product or refund the purchase price for the non-performing product. TEMPTU, Inc., reserves the right to use reconditioned/ refurbished parts to repair or replace a product.

### WARRANTY LIMITATIONS

EXCEPT AS SPECIFICALLY SET FORTH ABOVE, THERE ARE NO WARRANTIES OF ANY KIND, EXPRESS OR IMPLIED, WITH RESPECT TO THE PRODUCT, AND TEMPTU SPECIFICALLY DISCLAIMS ANY SUCH WARRANTIES. THE IMPLIED WARRANTIES GRANTED HEREUNDER, INCLUDING THE IMPLIED WARRANTIES OF MERCHANTABILITY AND FITNESS FOR A PARTICULAR PURPOSE, ARE LIMITED TO THE FIRST TWO (2) YEARS IMMEDIATELY FOLLOWING THE ORIGINAL DATE OF PURCHASE. THE REPAIR, REPLACEMENT, OR REFUND AS PROVIDED UNDER THIS EXPRESS LIMITED WARRANTY IS THE EXCLUSIVE REMEDY OF THE CONSUMER AND IS PROVIDED IN LIEU OF ALL OTHER REMEDIES AND WARRANTIES, EXPRESS OR IMPLIED. IN NO EVENT SHALL TEMPTU BE LIABLE, WHETHER IN CONTRACT OR TORT (INCLUDING NEGLIGENCE), FOR DAMAGES IN EXCESS OF THE PURCHASE PRICE OF THE PRODUCT THAT IS FOUND TO BE DEFECTIVE, OR FOR ANY INDIRECT, INCIDENTAL, SPECIAL OR CONSEQUENTIAL DAMAGES OF ANY KIND OR LOSS TO THE FULL EXTENT THAT THESE DAMAGES MAY BE DISCLAIMED BY LAW.

Some states do not allow the limitation or exclusion of incidental or consequential damages, or limitation on the length of an implied warranty so the above limitations or exclusions may not apply to you. This limited warranty gives you specific legal rights that vary from state to state. To obtain warranty services or information please call or write to our customer service department. You will receive instructions on how to ship the product, at your expense, back to TEMPTU. To obtain service you must have registered online or by mail with TEMPTU or you must include a copy of your receipt and your name, phone number and mailing address inside your package.

US PATENT: 8,091,802; 8,091,803; 8,091,804; 8,096,489; 9,056,324; 9,061,295

# T E M P T U

Visit [temptu.com](http://temptu.com) for tips and tricks to best achieve the results of a professional makeup session at home.

- Correct imperfections with Airpod Foundation
- Create a sun-kissed bronze to an all-over glow with Airpod Bronzer
  - Contour & define natural features with Airpod Highlighter
  - And many more advanced techniques!

If you have any questions regarding your TEMPTU Air, please contact our customer care team. Call 1-888-983-6788, email [customercare@temptu.com](mailto:customercare@temptu.com) or visit [temptu.com](http://temptu.com) to chat live with a TEMPTU Pro.



[WWW.TEMPTU.COM](http://WWW.TEMPTU.COM)