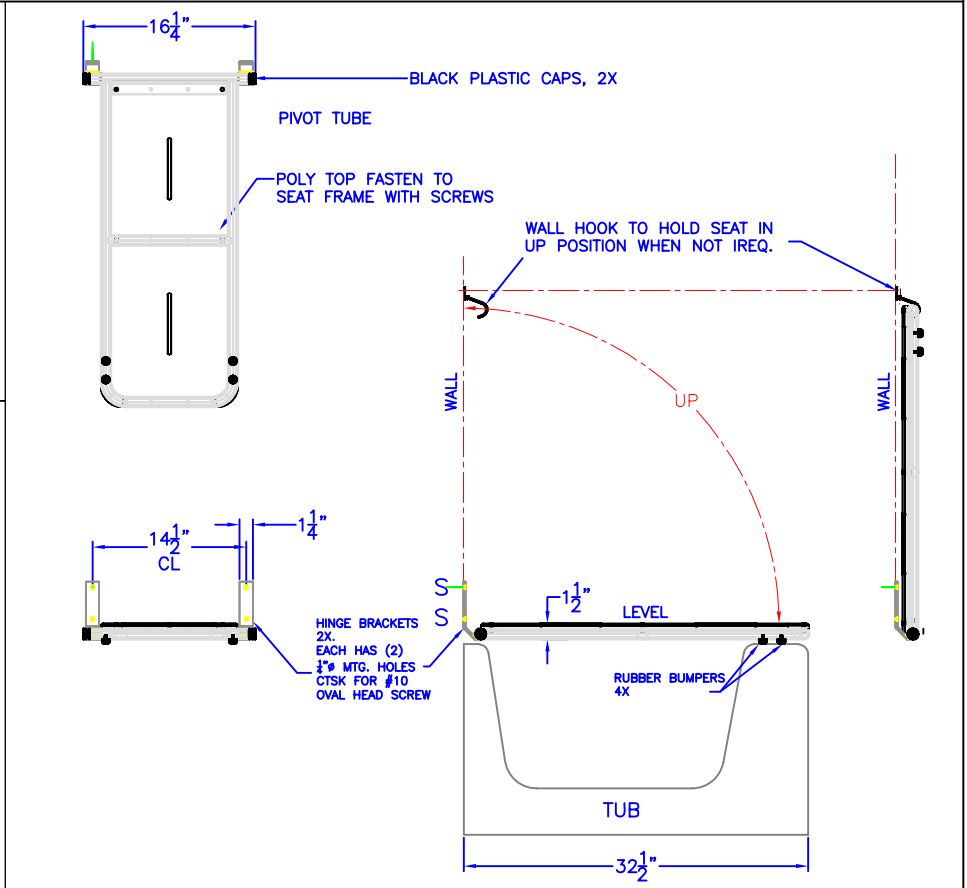
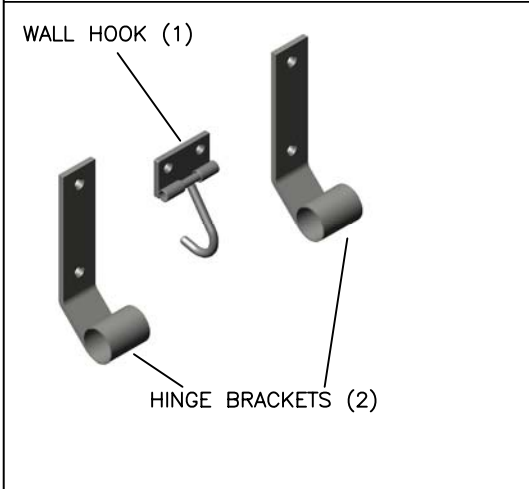




Technical Data

S-6017-SS

FOLDING TUB SEAT WITH WHITE POLY TOP



Construction:

FRAME: 1" X .049W TYPE 304 STAINLESS STEEL TUBE. MANDREL BENT AND FULLY WELDED TO PIVOT TUBE
 HINGE BRACKETS: 7 GAUGE TYPE 304 STAINLESS STEEL WITH (2) 1/4" MTG. HOLES CTSK. FOR #10 OVAL HEAD SCREW.
 WALL HOOK: 7 GAUGE TYPE 304 STAINLESS STEEL WITH (2) 1/4" MTG. HOLES CTSK. FOR #10 OVAL HEAD SCREW. 1/4" Ø ROD SWIVEL HOOK ATTACHED WITH SLEEVES, WELDED TO PLATE.
 POLY TOP: 1/2" THICK HIGH DENSITY POLY TOP FASTEN TO FRAME WITH SCREWS
 RUBBER BUMPERS: (4) BLACK RUBBER BUMPERS FASTEN TO FRAME TO PROTECT TUB SURFACE.

Operation:

- POSITION SEAT ACROSS TUB FOR USE
- FOLD IN UPRIGHT POSITION AND ENGAGE HOOK ONTO FRAME TUBE TO HOLD UPRIGHT
- UNHOOK TO LOWER SEAT AND REPEAT FIRST STEP

Installation:

SLIDE THE HINGE BRACKETS ON TO THE SEAT FRAME PIVOT TUBE.
 PLACE THE SEAT ON THE TUB. LEVEL THE SEAT AND MOUNT THE HINGE BRACKETS TO THE WALL
 LIFT SEAT INTO VERTICAL POSITION.
 POSITION WALL HOOK SO THAT IT IS IN THE PROPER POSITION TO HOLD THE TOP OF THE SEAT. FASTEN TO WALL

CAUTION: SEAT IS ONLY AS STRONG AS THE ANCHORING DEVICES AND THE WALL ON WHICH IT IS MOUNTED TO.

Guide Specification:

1/2" THICK WHITE POLY TOP FOLDING TUB SEAT
 32 1/2" OAL X 13 OAL
 TYPE 304 STAINLESS STEEL WELDED FRAME CONSTRUCTION
 WALL HOOK ASSEMBLY TO HOLD SEAT WHEN NOT REQ.