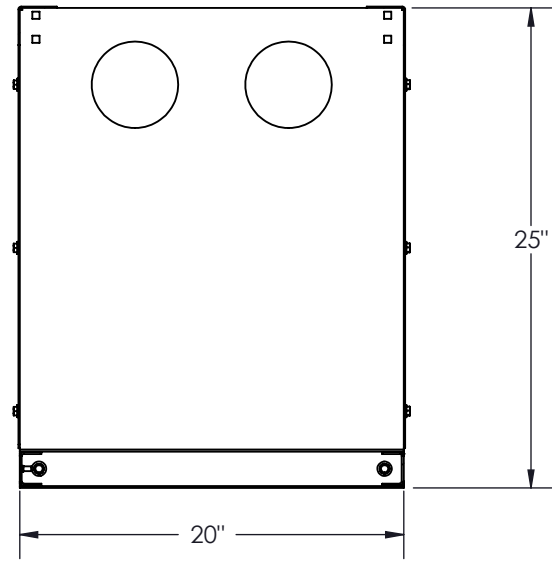


COLOR	PT# SUFFIX
BLACK	-BK
WHITE	-WH
GREY	-GY

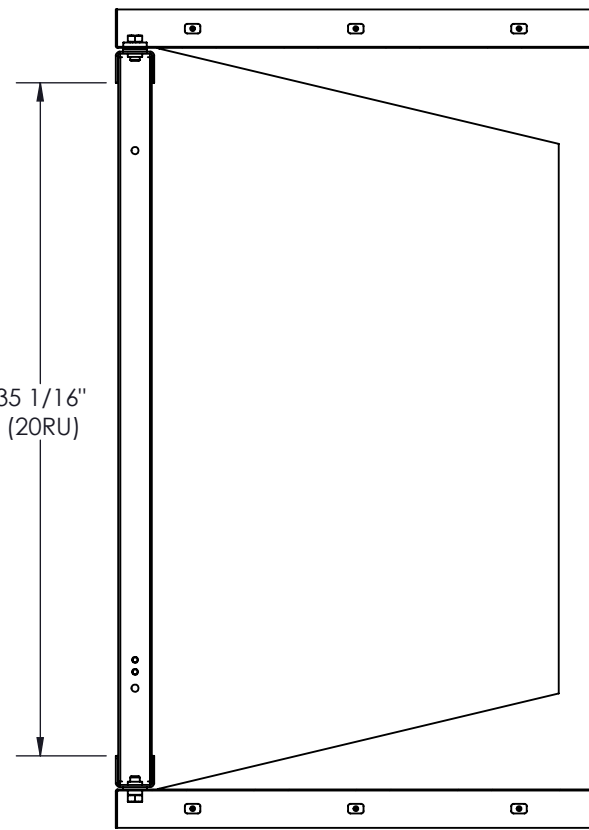
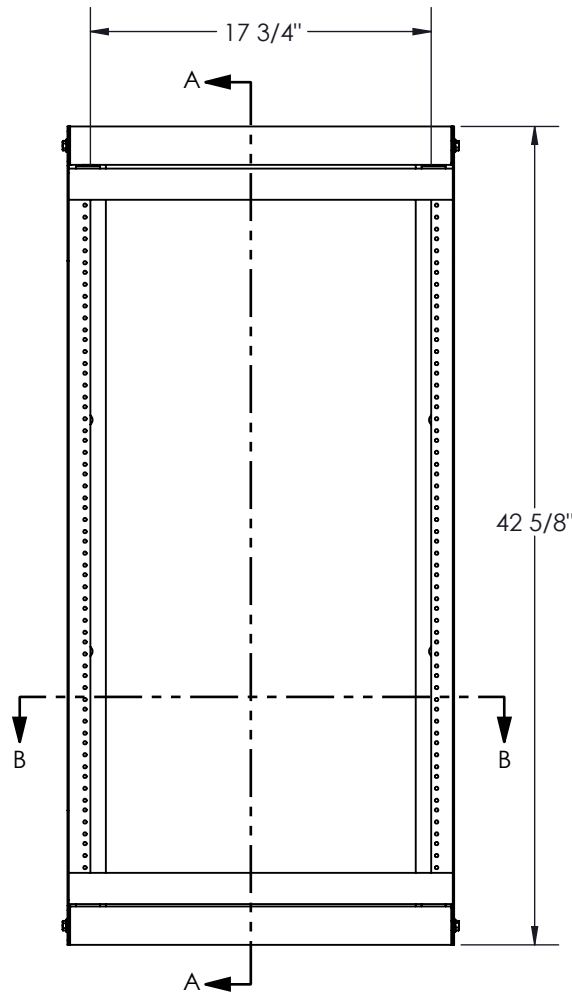
NO.	NOTE	DESCRIPTION	QTY
1	153704 - 25"	TOP / BOTTOM, HEAVY DUTY	2
2	0.250-20	WELD NUT	12
3	1305023473	RACK FRAME (19 x 35)	1
4	1540	NYLON BUSHING	4
5	153703 - (35) x 25"	SIDE, HEAVY DUTY	2
6	1/4"	FLAT WASHER 1/4"	12
7	1/4-20 x 5/8	HEX BOLT	12
8	1/2-13 x 1	HEX BOLT 1/2-13 x 1	4
9	1/2-13	WELD NUT	4

NOTES:

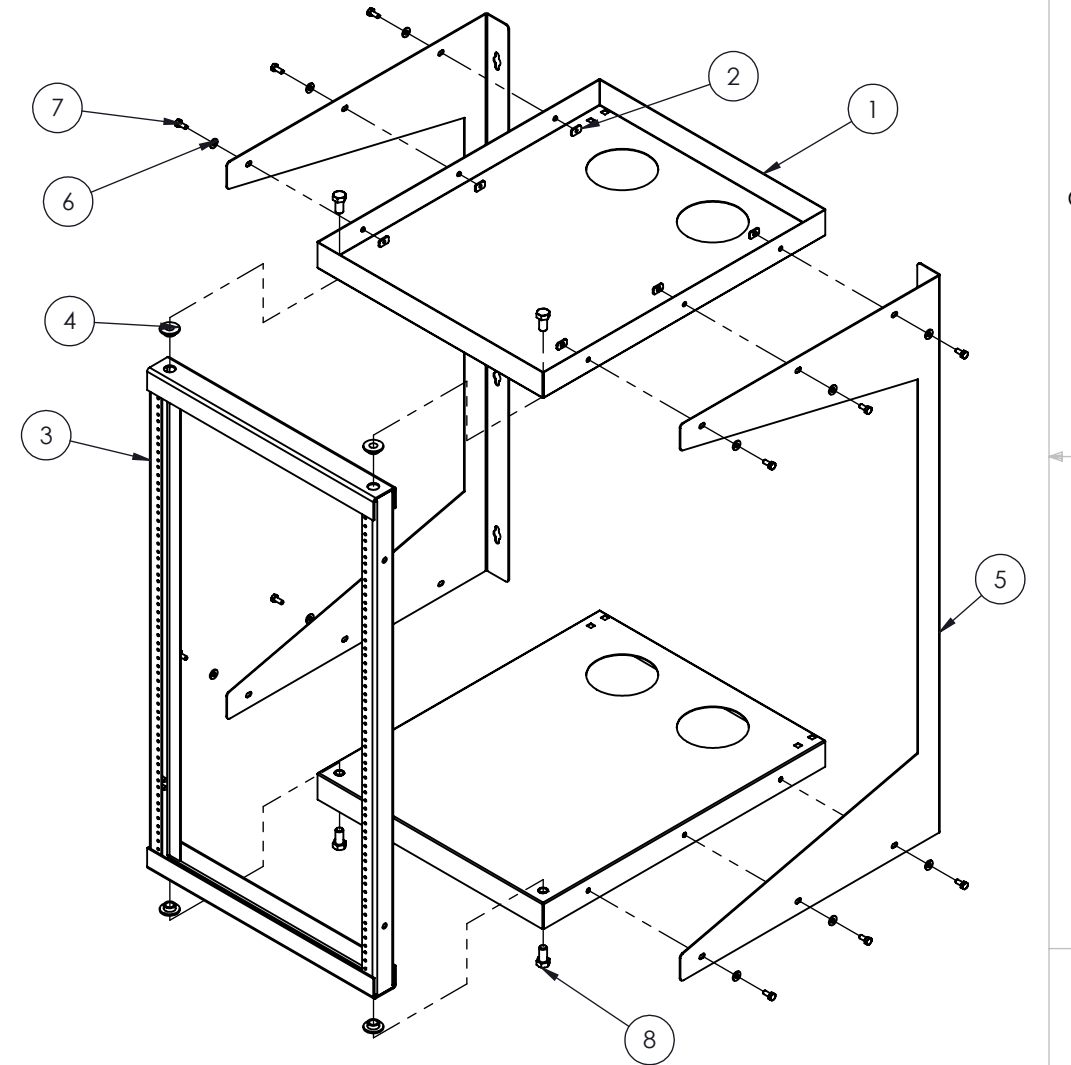
- 1 - APPROX. WEIGHT: 51.1 LBS
- 2 - FINISH: TEXTURED POWDER COATING
- 3 - MATERIAL:
 1 - FRAME: STEEL CRS GAUGE 12 (0.105")
 2 - SIDE: STEEL CRS GAUGE 14 (0.075")
 3 - TOP&BOTTOM: STEEL CRS GAUGE 16 (0.075")
- 4 - CONSTRUCT: FRAME FULLY WELDED
- 5 - INCLUDES: ASSEMBLY HARDWARE



SECTION B-B



SECTION A-A



Electron METAL PROUDLY MANUFACTURED IN CANADA

CONFIDENTIAL
 THE INFORMATION CONTAINED IN THIS DRAWING IS THE SOLE PROPERTY OF ELECTRON METAL A.I.G. INC. ANY REPRODUCTION IN PART OR AS A WHOLE WITHOUT THE WRITTEN PERMISSION OF A.I.G. ELECTRON METAL INC IS PROHIBITED.

DRAWN BY: E.D.
 CHECKED BY: E.D.

TITLE: SWING RACK (19 x 35) x 25 H.D.

FILE: Robuste19x35x25_1305023472_Eng	PART NO.: WRSSHD-192025	DWG NO.: 1305023472	REV.: -	SCALE: 1:10	DATE: 2006/06/28	SHEET: 1 / 1
---	----------------------------	------------------------	------------	----------------	---------------------	-----------------

APPROVED BY: _____