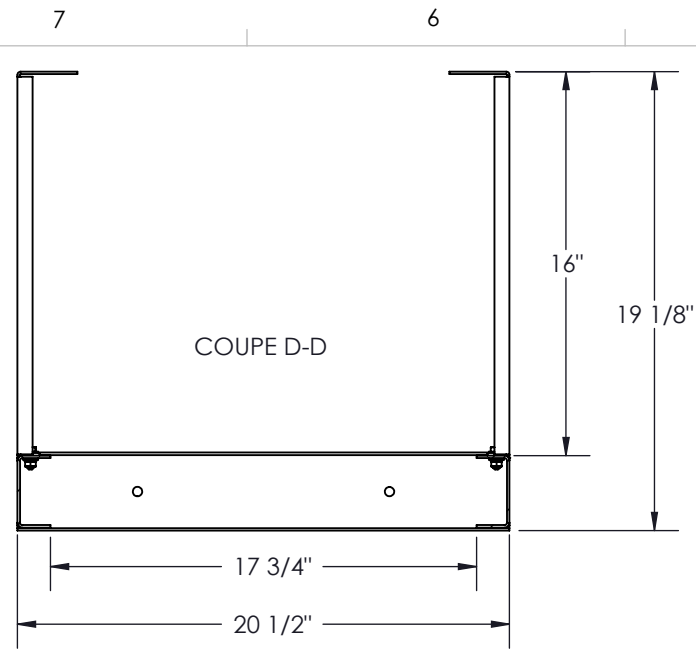
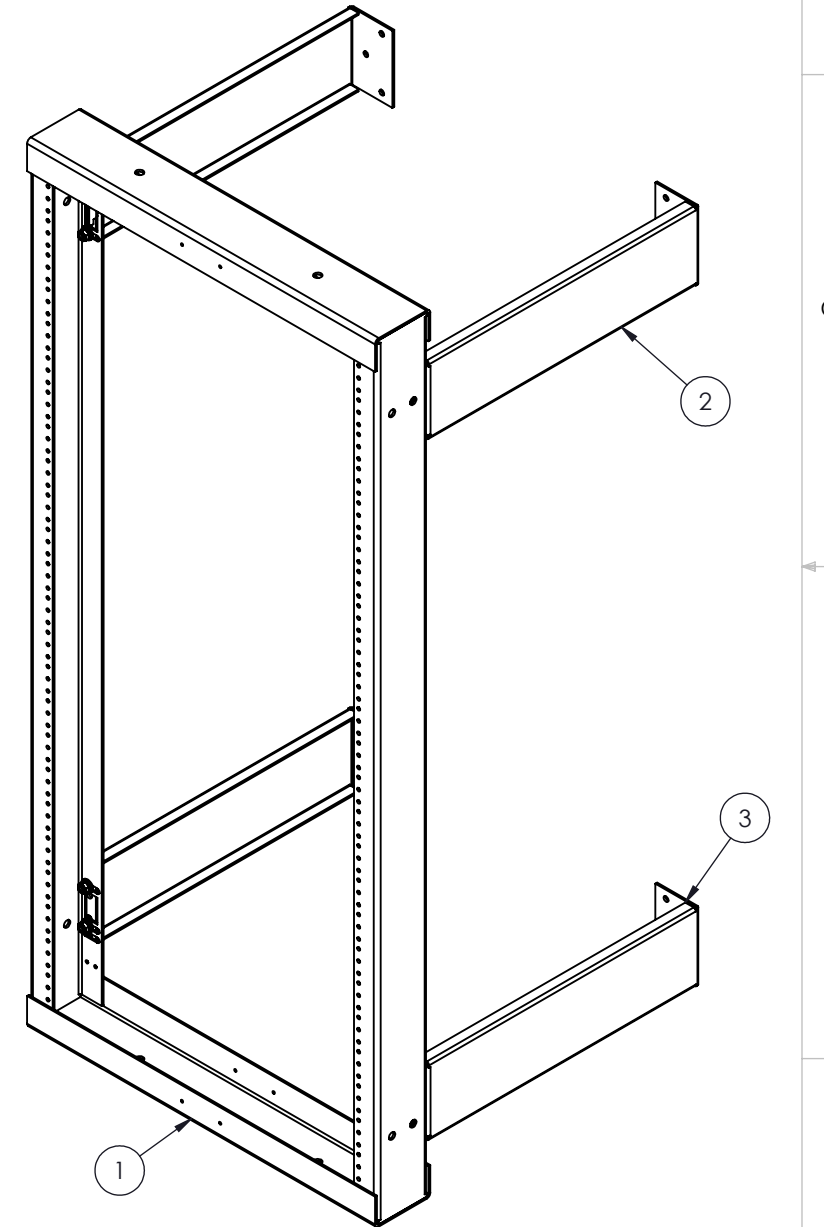
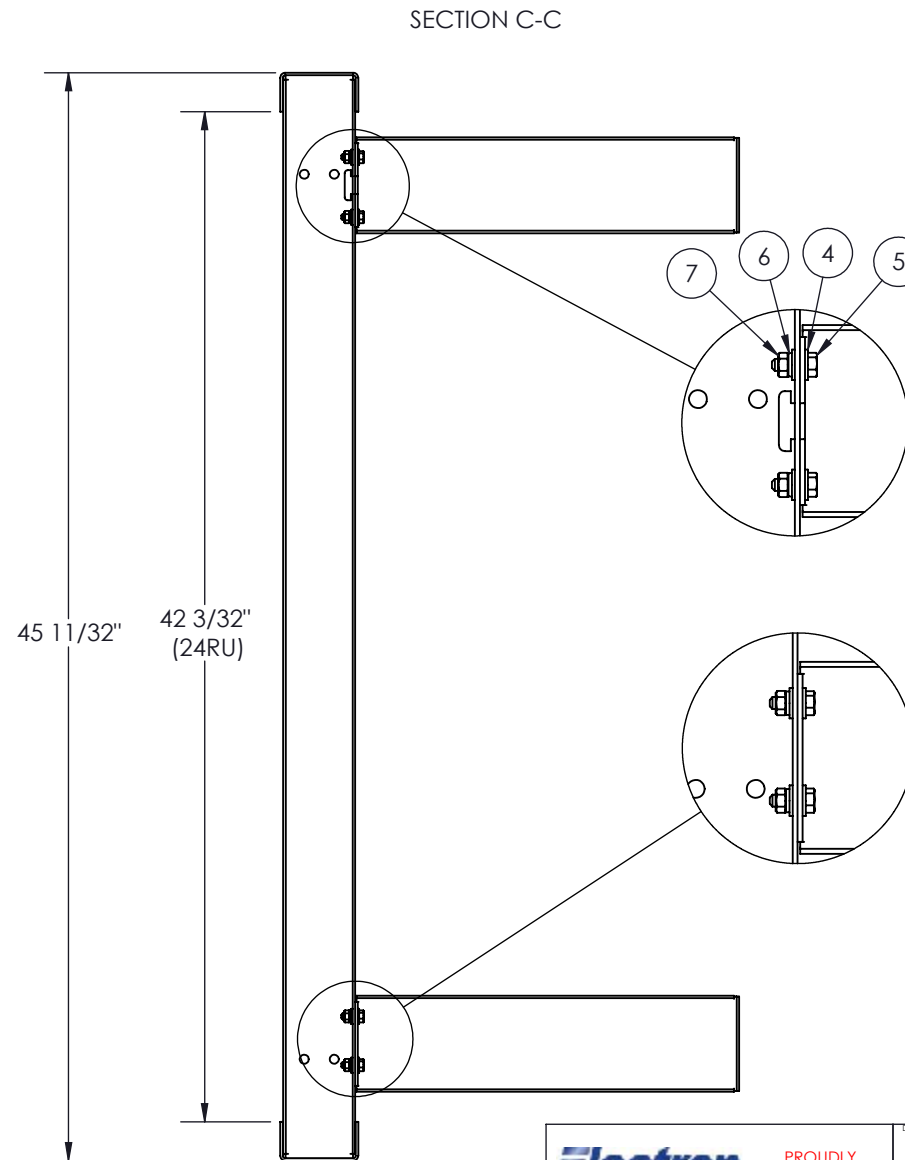
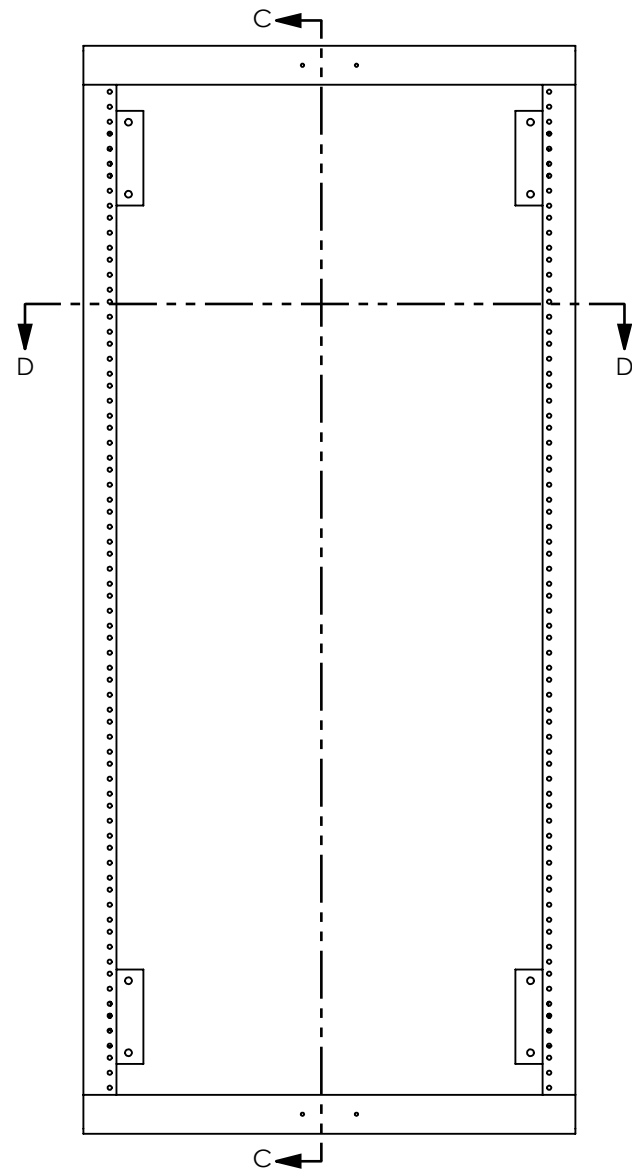


COLOR	PT# SUFFIX
BLACK	-BK
WHITE	-WH
GREY	-GY



- NOTES:
- 1 - APPROX. WEIGHT: 32.40 LBS
 - 2 - FINISH: TEXTURED POWDER COATING
 - 3- MATERIAL:
1- FRAME: STEEL CRS GAGUE 12 (0.105")
2- SUPPORT ARMS: STEEL CRS GAGUE 12 (0.105")
 - 4 - CONSTRUCT: FRAME FULLY WELDED
 - 5 - INCLUDES: ASSEMBLY HARDWARE

NO.	NOTE	DESCRIPTION	QTÉ
1	1305030218	BÂTI (19 x 42)	1
2	1646 - 16"	SUPPORT HAUT	2
3	1305029501 - 16"	SUPPORT BAS	2
4	1/4"	RONDELLE PLAT 1/4"	16
5	1/4-20 x 3/4	BOULONO HEX 1/4-20 x 3/4	8
6	1/4"	RONDELLE DE BLOCAGE FENDUE 1/4"	8
7	1/4-20	ÉCROU HEX 1/4-20	8



Electron METAL PROUDLY MANUFACTURED IN CANADA

CONFIDENTIAL
THE INFORMATION CONTAINED IN THIS DRAWING IS THE SOLE PROPERTY OF ELECTRON METAL A.I.G. INC. ANY REPRODUCTION IN PART OR AS A WHOLE WITHOUT THE WRITTEN PERMISSION OF A.I.G. ELECTRON METAL INC IS PROHIBITED.

DRAWN BY: E.D.	TITLE: WALL MOUNT RACK (19 x 42) x 16	
CHECKED BY: E.D.		
FILE: RackMural19x42x16_1305025492_Eng		
PART NO.: WMRFIX-192416	DWG NO.: 1305025492	REV.: -
	SCALE: 1:8	DATE: 2011-11-30
		SHEET: 1 / 1

APPROVED BY: